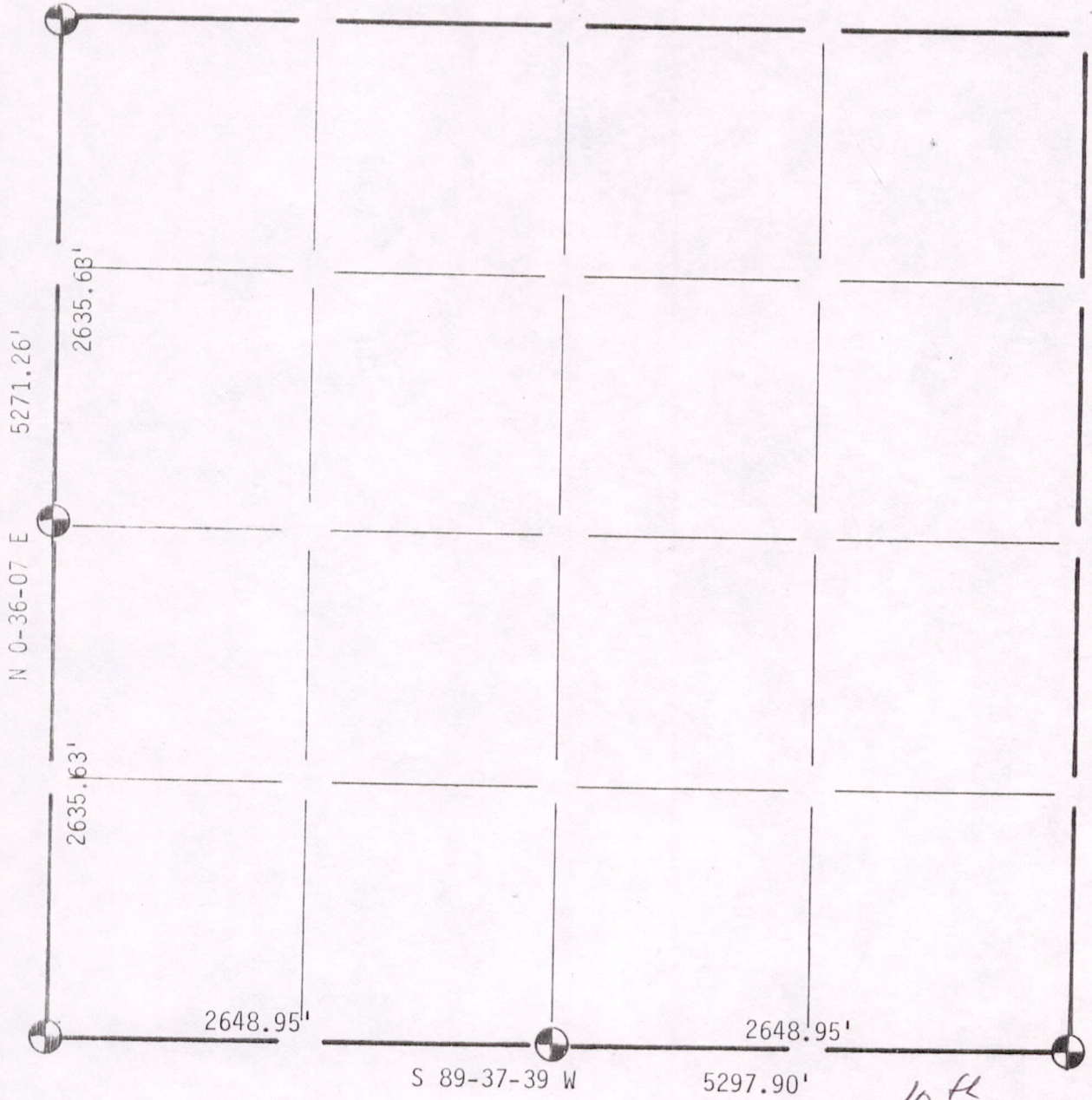





SECTION SUMMARY AND INDEX

$\frac{14}{\text{SECTION}}$ $\frac{20}{\text{TOWN}}$ $\frac{7}{\text{RANGE}}$



LEGEND

-  HARRISON CAST IRON MONUMENT
-  STONE OR CONCRETE MONUMENT
-  OTHER _____
- _____
- _____

filed for record this 10th
 day of May 1983
 per 59.60 Wisconsin Statutes.
D. P. Kiedrowski
 ADAMS COUNTY SURVEYOR

Kiedrowski Engineering, Inc.
 4340 80th Street South (Kellner)
 Wisconsin Rapids, WI 54494

4/29/83

Sec 14200700002