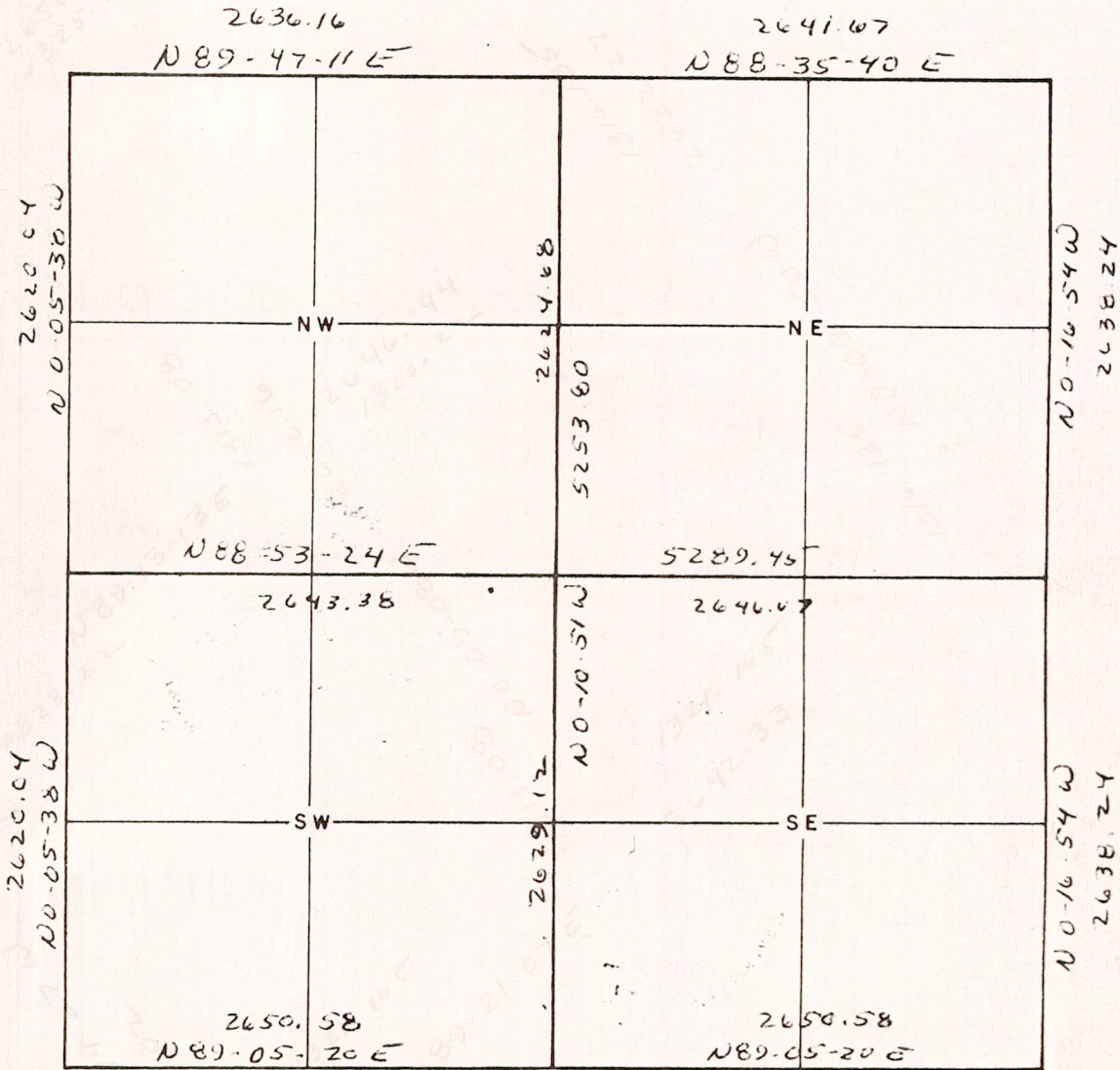




# McMAHON ASSOCIATES, INC.

CONSULTING ENGINEERS

TOWN OF Leola, SEC. 24, T20 N, R 7 E



SCALE: 1"=1000'

P. O. BOX 405 MENASHA, WISCONSIN 54952

Adams

COUNTY, WISCONSIN

Revised 8-4-78

PHONE (414) 739-0351

See 24200700002