

31
SECTION

16
TOWN

06
RANGE

ADAMS COUNTY

COUNTY CORNER NO: 122
ROMPORTOL ID: 41606310020

PUBLIC LAND SURVEY MONUMENT RECORD

TYPE OF MONUMENT: HARRISON
ADAMS COUNTY COORDINATES, NAD 83 (2007)

N. 164724.990

E. 528644.577

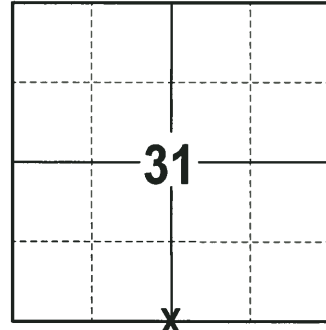
ELEVATION- - - DATUM - -

FIELD WORK DATE: 11/16/2017

BASIS FOR MONUMENT LOCATION

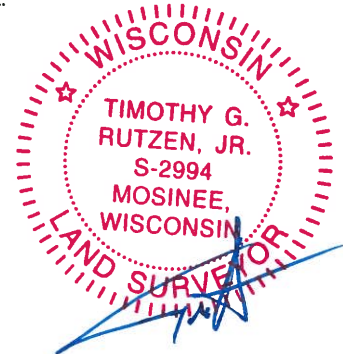
1980 - PLS 584 SET HARRISON MONUMENT ON LINE AND AT PROPORTIONATE DISTANCES BETWEEN THE RANGE LINE TO THE WEST AND SECTION LINE TO THE EAST. THIS POSITION FELL VERY GOOD IN RELATION TO THE FENCE CORNER IN THE AREA. TIES TO TREES, NAIL AND DISCS.

2017 - PLS 2994 FOUND A HARRISON MONUMENT FLUSH WITH THE GROUND SURFACE AND 3 WITNESS TREES. THE MONUMENT AGREES WITH THE EXISTING WITNESS TREES. ACCEPTED THE HARRISON MONUMENT AS THE CORNER LOCATION. SET 4 NEW TIES AND MEASURED TO THE TIES AND WITNESS TREES.



LOCATION
(INDICATE CORNER BY "X")

SEAL:

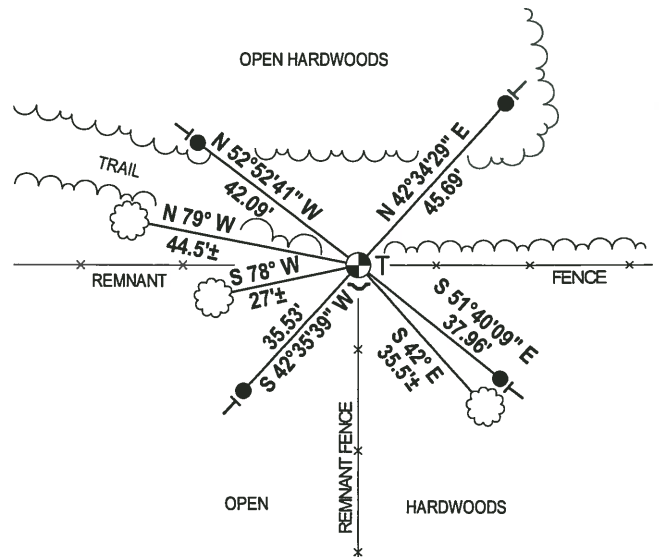
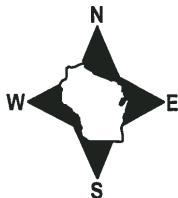


DATA SHOWN HERE ON THIS TIE SHEET IS CORRECT AND COMPLETE TO THE BEST OF MY KNOWLEDGE AND BELIEF.

PROFESSIONAL LAND SURVEYOR

DATE 12-4-17

- TIE SKETCH -

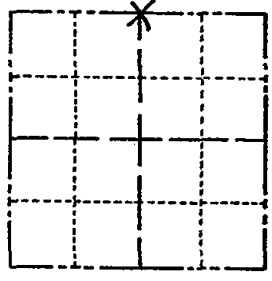


- 3/4" x 18" IRON REBAR SET, 1.50#/FT
- ⊕ HARRISON FOUND
- ~ STEEL FENCE POST
- ┆ VINYL "T" POST
- ☼ WITNESS TREE FOUND

Government Land Corner Certificate

ADAMS County
 TYPE OF MONUMENT: HARRISON
 STATE PLANE COORDINATES: N _____
 E _____
 ELEVATION — M.S.L. DATUM: _____
 THETA ANGLE: _____
 FIELD BOOK: 54 PAGE 68
 DRAWN BY: S. KMIEC

CORNER NO. 2
 SECTION 6
 TOWN 15
 RANGE 6



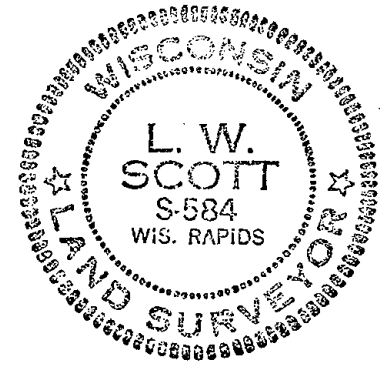
LOCATION
(Indicated by 'X')

BASIS FOR MONUMENT LOCATION

Show info such as: History of corner, with reference to Vol. and pg., dates, surveyor; exact description of monument replaced; if location computed, by taped or EDM traverse; landowner remarks, etc. (Use reverse side if necessary)

Set Harrison on line and proportion between the range line to the West and the section line to the East. This fell very good in relation to the fence corner in the area. Ties to trees, nail and discs.

SEAL:



DATA SHOWN HERE ON
CERTIFIED CORRECT:

L. W. Scott
Registered Land Surveyor

DATE: 10/31/80

TIE SKETCH

Show at least four ties, also fence lines, roads, topo, size and type of witness trees' and if off road - best way to arrive at corner.

