

35
SECTION

16
TOWN

06
RANGE

ADAMS COUNTY

COUNTY CORNER NO: 131
ROMPORTOL ID: 41606350000

PUBLIC LAND SURVEY MONUMENT RECORD

TYPE OF MONUMENT: HARRISON (BROKEN-TOP)
ADAMS COUNTY COORDINATES, NAD 83 (2007)

N. 164689.713

E. 552471.047

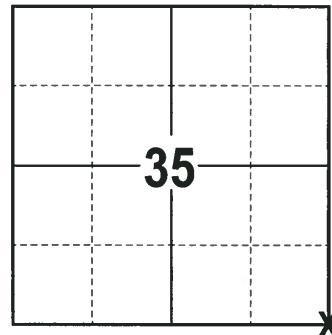
ELEVATION- - - DATUM - -

FIELD WORK DATE: 11/14/2017

BASIS FOR MONUMENT LOCATION

1975 - PLS 1103 FOUND STONE/BLUE KIEL CROSS USED BY FRED ZIETLOW IN A SURVEY OF THE SECTION TO THE NORTH. REPLACED STONE WITH HARRISON MONUMENT AT THE CORNER LOCATION AND RE-TIED.

2017 - PLS 2994 FOUND A HARRISON MONUMENT WITH A BROKEN-TOP 6" BELOW THE GROUND SURFACE AND 4 WITNESS TREES. THE MONUMENT AGREES WITH THE EXISTING WITNESS TREES. ACCEPTED THE HARRISON MONUMENT WITH A BROKEN-TOP AS THE CORNER LOCATION. SET 4 NEW TIES AND MEASURED TO THE TIES AND WITNESS TREES.



LOCATION
(INDICATE CORNER BY "X")

SEAL:

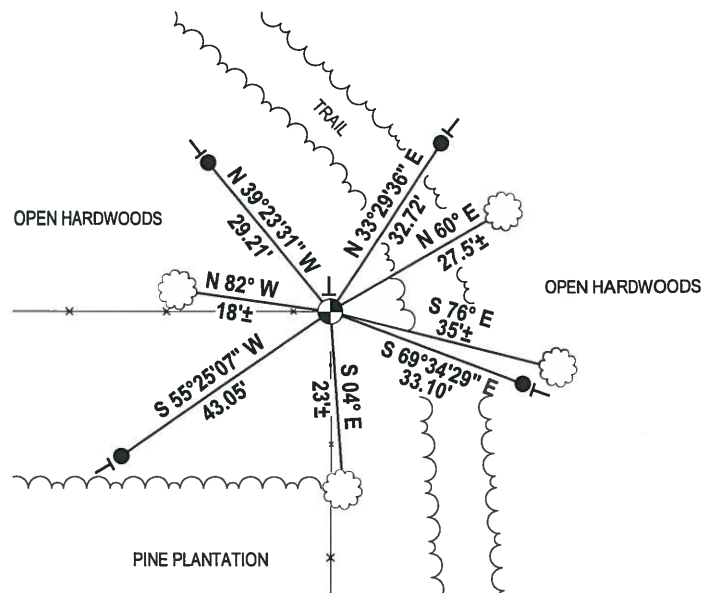
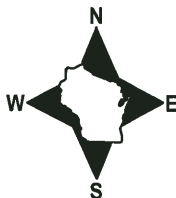


DATA SHOWN HERE ON THIS TIE SHEET IS CORRECT AND COMPLETE TO THE BEST OF MY KNOWLEDGE AND BELIEF.

PROFESSIONAL LAND SURVEYOR

DATE 12-4-17

- TIE SKETCH -



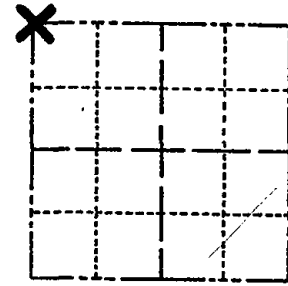
- 3/4" x 18" IRON REBAR SET, 1.50#/FT
- ⊙ HARRISON (BROKEN-TOP) FOUND
- VINYL "T" POST
- ☁ WITNESS TREE FOUND

ADAMS COUNTY

Survey Monument Record

TYPE OF MONUMENT: Harrison Monument
 STATE PLANE COORDINATES: N _____
 E _____
 ELEVATION — M.S.L. DATUM: _____
 THETA ANGLE: _____
 FIELD BOOK: _____ PAGE _____

CORNER NO. 717
 SECTION 1
 TOWN 15
 RANGE 6



LOCATION
(Indicated by 'X')

SEAL:



BASIS FOR MONUMENT LOCATION

(Use reverse side if necessary)

Show info such as: History of corner, with reference to Vol. and pg, dates, surveyor; exact description of monument replaced; if location computed, by taped or EDM traverse; landowner remarks, etc.

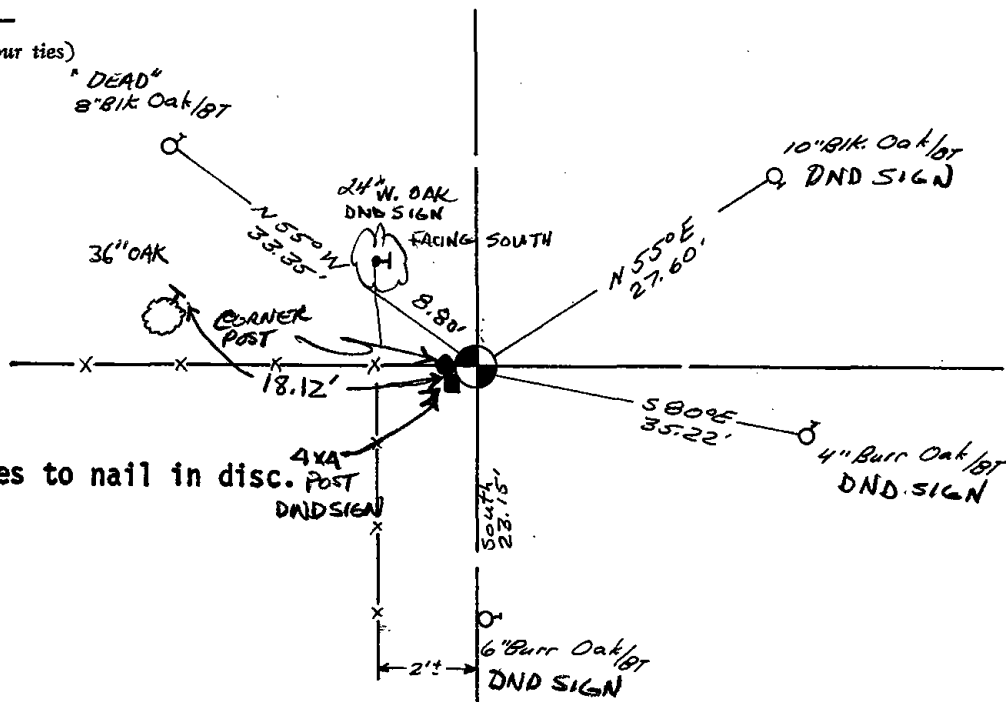
Found Stone/blue kiel cross used by Fred Zietlow in survey of section to the North. Accepted and monumented same.

CORNER O.K. 8-6-76 SK-SS
 OK GR Done 12/1985
 ALL OK 3-18-91 JG
 ALL OK CR-JG 2-19-76
 1-NEW TIE, MDN. OK 2-6-01, JG

CERTIFIED CORRECT:
Dale C. Hagen
 Registered Land Surveyor
 DATE: 4/23/78

TIE SKETCH

(Show at least four ties)



NOTE:

Ties in trees to nail in disc. post DND SIGN



MAINTENANCE RECORD

Date	Init.	Remarks
12-21-11	ML	1 NEW, MON. OK