

PUBLIC LAND SURVEY MONUMENT RECORD

TYPE OF MONUMENT: HARRISON
 ADAMS COUNTY COORDINATES, NAD 83 (2007)

N. 161938.288

E. 536568.778

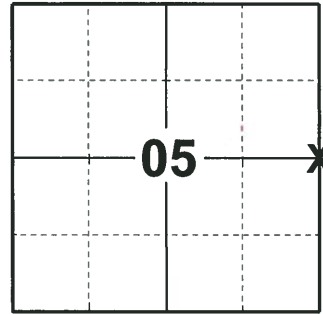
ELEVATION- _____ DATUM _____

FIELD WORK DATE: 06/18/2018

BASIS FOR MONUMENT LOCATION

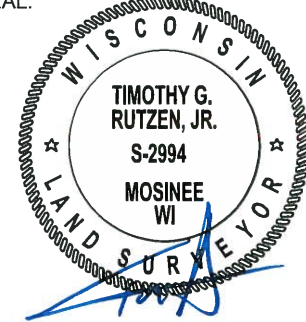
1978 - PLS 922 RESEARCHED ADAMS COUNTY SURVEY RECORDS AND FOUND NO RESURVEYS ON FILE THAT WERE PERTINENT TO THIS CORNER. FOUND NO EVIDENCE OF GOV'T CORNER OR WITNESSES. CALCULATED POSITION BY SINGLE PROPORTIONATE METHOD & PRORATING AGAINST ORIGINAL RUNNING NOTES. EDM DISTANCES WERE WITHIN REASON. NOTE: INTERIOR OCCUPATION LINES DO NOT FIT PRORATED LINES. SET HARRISON AT CALCULATED POSITION AND TIED OUT.

2018 - PLS 2994 FOUND A HARRISON MONUMENT 2" BELOW THE GROUND SURFACE AND 2 TIES. THE MONUMENT AGREES WITH THE EXISTING SE TIE. ACCEPTED THE HARRISON MONUMENT AS THE CORNER LOCATION. SET 2 NEW TIES AND MEASURED TO THE TIES.



LOCATION
 (INDICATE CORNER BY "X")

SEAL:



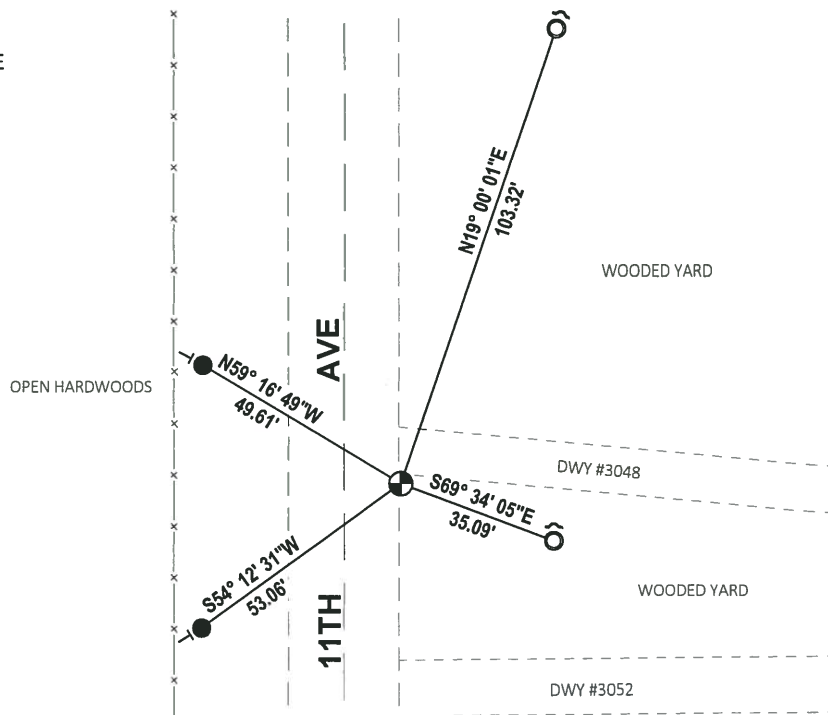
DATA SHOWN HERE ON THIS TIE SHEET IS CORRECT AND COMPLETE TO THE BEST OF MY KNOWLEDGE AND BELIEF.

PROFESSIONAL LAND SURVEYOR

DATE 7-18-18

- TIE SKETCH

NOTE: THE CORNER FALLS 12± EAST OF THE CENTERLINE OF 11TH AVE.



- SET 3/4" x 18" IRON REBAR, 1.50#/FT
- FOUND 1-1/4" O.D. IRON PIPE
- ⊕ FOUND HARRISON MONUMENT
- ↗ STEEL FENCE POST
- └ VINYL "T" POST

Government Land Corner Certificate

ADAMS

County

TYPE OF MONUMENT: STANDARD HARRISON

STATE PLANE COORDINATES: N _____
E _____

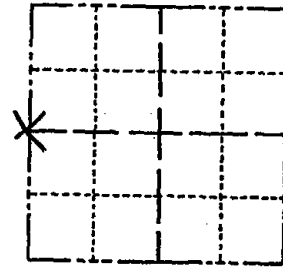
ELEVATION — M.S.L. DATUM: _____

THETA ANGLE: _____

FIELD BOOK: 567 PAGE 4

DRAWN BY: F.W. ZIETLOW

CORNER NO. 16
SECTION 4
TOWN 15N
RANGE 6E



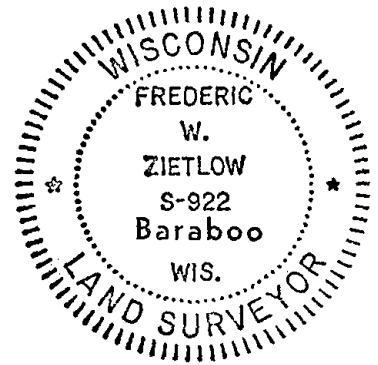
LOCATION
(Indicated by 'X')

BASIS FOR MONUMENT LOCATION

Show info such as: History of corner, with reference to Vol. and pg., dates, surveyor; exact description of monument replaced; if location computed, by taped or EDM traverse; landowner remarks, etc. (Use reverse side if necessary)

RESEARCHED ADAMS COUNTY SURVEY RECORDS AND COULD NO RESURVEYS ON FILE WHICH WERE PERTINENT TO THIS CORNER. NO EVIDENCE OF GOV'T CORNER OR WITNESS. RESET THIS CORNER BY SINGLE PROPORTIONATE METHOD & PRORATING AGAINST ORIGINAL RUNNING NOTES. EDM DISTANCES WERE WITHIN REASON.
NOTE: INTERIOR OCCUPATION LINES DO NOT FIT PROTRACTED LINES.

SEAL:



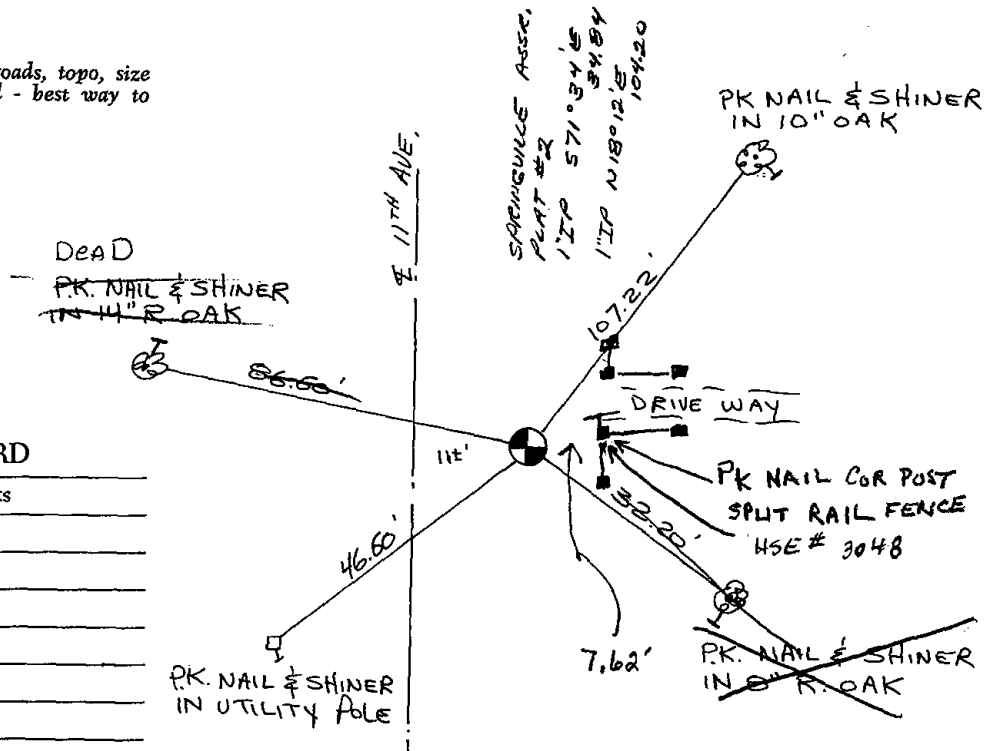
DATA SHOWN HERE ON
CERTIFIED CORRECT:

Frederic W. Zietlow
Registered Land Surveyor

DATE: MARCH 28, 1978

TIE SKETCH

Show at least four ties, also fence lines, roads, topo, size and type of witness trees and if off road - best way to arrive at corner.



MAINTENANCE RECORD

Date	Init.	Remarks
9-8-81	SK-NJ	
1-10-91	KZ-JG	ALL OK
1-10-96	JG-SS	OK
4-26-06	JG	OK
1-24-11	SS	OK

Government Land Corner Certificate

ADAMS

County

TYPE OF MONUMENT: STANDARD HARRISON

STATE PLANE COORDINATES: N _____

E _____

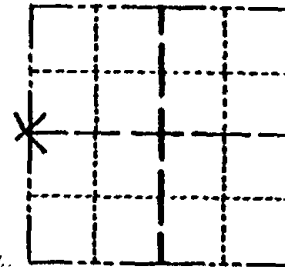
ELEVATION — M.S.L. DATUM: _____

THETA ANGLE: _____

FIELD BOOK: 567 PAGE 4

DRAWN BY: F.W. ZIETLOW

CORNER NO. 16
SECTION 4
TOWN 15N
RANGE 6E



LOCATION
(Indicated by 'X')

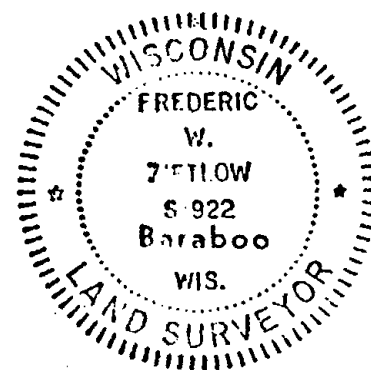
BASIS FOR MONUMENT LOCATION

Show info such as: History of corner, with reference to Vol. and pg., dates, surveyor; exact description of monument replaced; if location computed, by taped or EDM traverse; landowner remarks, etc. (Use reverse side if necessary)

RESEARCHED ADAMS COUNTY SURVEY RECORDS AND COULD NO RESURVEYS ON FILE WHICH WERE PERTINENT TO THIS CORNER. NO EVIDENCE OF GOV'T CORNER OR WITNESS. RESET THIS CORNER BY SINGLE PROPORTIONATE METHOD & PRORATING AGAINST ORIGINAL RUNNING NOTES. EDM DISTANCES WERE WITHIN REASON.

NOTE: INTERIOR OCCUPATION LINES DO NOT FIT PROTRACTED LINES.

SEAL:



DATA SHOWN HERE ON CERTIFIED CORRECT:

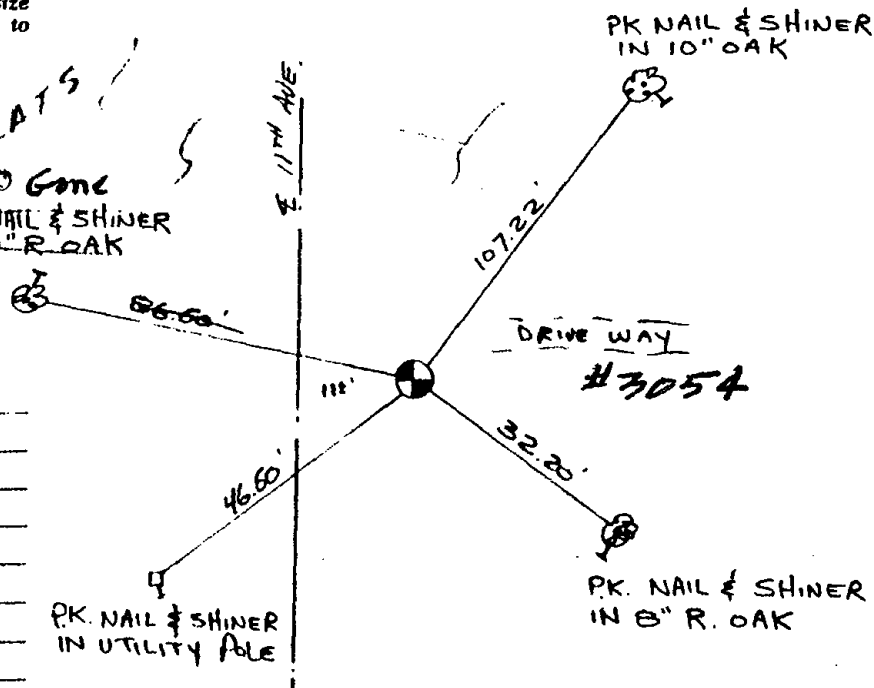
Frederic W. Zietlow
Registered Land Surveyor

DATE: MARCH 28, 1978

TIE SKETCH

Show at least four ties, also fence lines, roads, topo, size and type of witness trees and if off road - best way to arrive at corner.

SEE SPRINGVILLE ASSESOR'S PLATS!
~~DEAD~~ GONE
PK. NAIL & SHINER
IN 14" R. OAK



MAINTENANCE RECORD

Date	Init.	Remarks
9-8-81	SK-NJ	
1-10-91	KZ-JG	ALL OK
9-28-04	ZL	