

## PUBLIC LAND SURVEY MONUMENT RECORD

TYPE OF MONUMENT: HARRISON  
 ADAMS COUNTY COORDINATES, NAD 83 (2007)

N. 161912.905

E. 541829.844

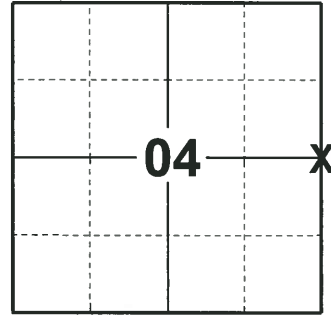
ELEVATION-      -      -      DATUM      -      -     

FIELD WORK DATE: 06/14/2018

### BASIS FOR MONUMENT LOCATION

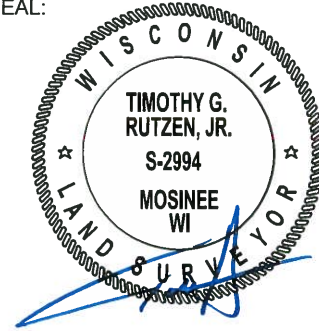
1978 - PLS 922 RESEARCHED ADAMS COUNTY SURVEY RECORDS AND COULD NOT FIND ANY RESURVEYS ON FILE WHICH WERE PERTINENT TO THIS CORNER. NO EVIDENCE OF THE ORIGINAL GOV'T POST OR WITNESSES. CALCULATED THE CORNER BY SINGLE PROPORTIONATE METHOD & PRORATING AGAINST THE ORIGINAL RUNNING NOTES. EDM DISTANCES WERE WITHIN REASON. NOTE OCCUPATION LINES DO NOT FIT INTERIOR ON THIS SECTION WHEN PROPER PRORATION IS USED. SET HARRISON AT CALCULATED POSITION AND TIED OUT.

2018 - PLS 2994 FOUND A HARRISON MONUMENT 12" BELOW THE ROAD SURFACE AND 1 TIE. THE MONUMENT AGREES WITH THE EXISTING TIE. ACCEPTED THE HARRISON MONUMENT AS THE CORNER LOCATION. SET 3 NEW TIES AND MEASURED TO THE TIES.



**LOCATION**  
 (INDICATE CORNER BY "X")

SEAL:



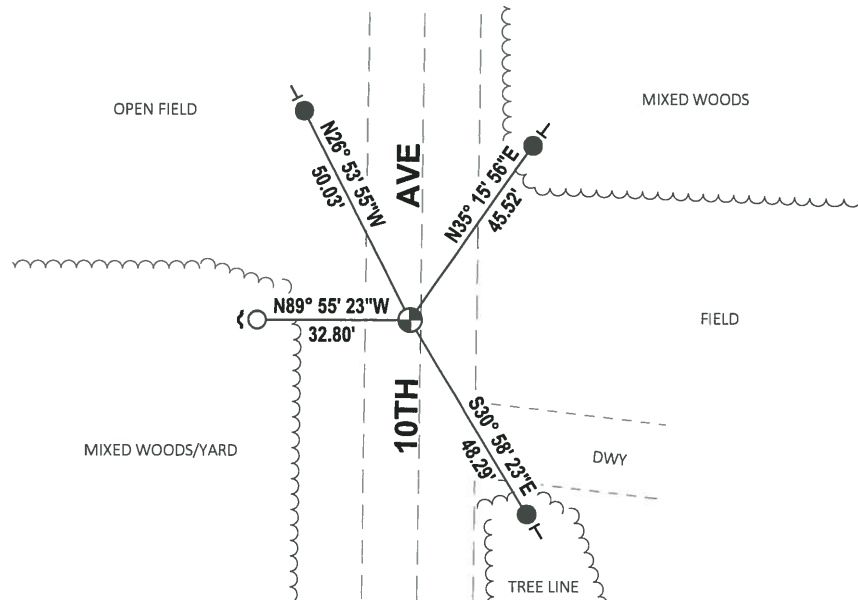
DATA SHOWN HERE ON THIS TIE SHEET IS CORRECT AND COMPLETE TO THE BEST OF MY KNOWLEDGE AND BELIEF.

PROFESSIONAL LAND SURVEYOR

DATE 7-18-18

### - TIE SKETCH

NOTE: THE CORNER FALLS 2'± WEST OF THE CENTERLINE OF 10TH AVE.



- SET 3/4" x 18" IRON REBAR, 1.50#/FT
- FOUND 3/4" IRON ROD
- ⊕ FOUND HARRISON MONUMENT
- ~ STEEL FENCE POST
- VINYL "T" POST

# Government Land Corner Certificate

ADAMS County

TYPE OF MONUMENT: STANDARD HARRISON

STATE PLANE COORDINATES: N \_\_\_\_\_  
E \_\_\_\_\_

ELEVATION — M.S.L. DATUM: \_\_\_\_\_

THETA ANGLE: \_\_\_\_\_

FIELD BOOK: 567 PAGE 4

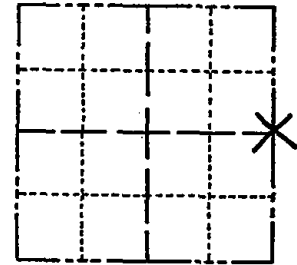
DRAWN BY: F.W. ZIETLOW

CORNER NO. 17

SECTION 4

TOWN 15N

RANGE 6E



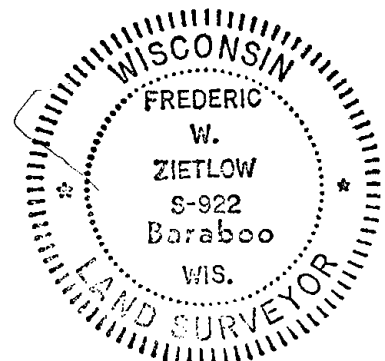
LOCATION  
(Indicated by 'X')

## BASIS FOR MONUMENT LOCATION

Show info such as: History of corner, with reference to Vol. and pg., dates, surveyor; exact description of monument replaced; if location computed, by taped or EDM traverse; landowner remarks, etc. (Use reverse side if necessary)

RESEARCHED ADAMS COUNTY SURVEY RECORDS AND COULD FIND NO RESURVEYS ON FILE WHICH WERE PERTINENT TO THIS CORNER. NO EVIDENCE OF ORIGINAL GOV'T POST OR WITNESS. RE-SET THIS CORNER BY SINGLE PROPORTIONATE METHOD & PRORATING AGAINST ORIGINAL RUNNING NOTES. EDM DISTANCES WERE WITHIN REASON. NOTE OCCUPATION LINES DO NOT FIT INTERIOR ON THIS SECTION WHEN PROPER PROTRACTION IS USED

SEAL:



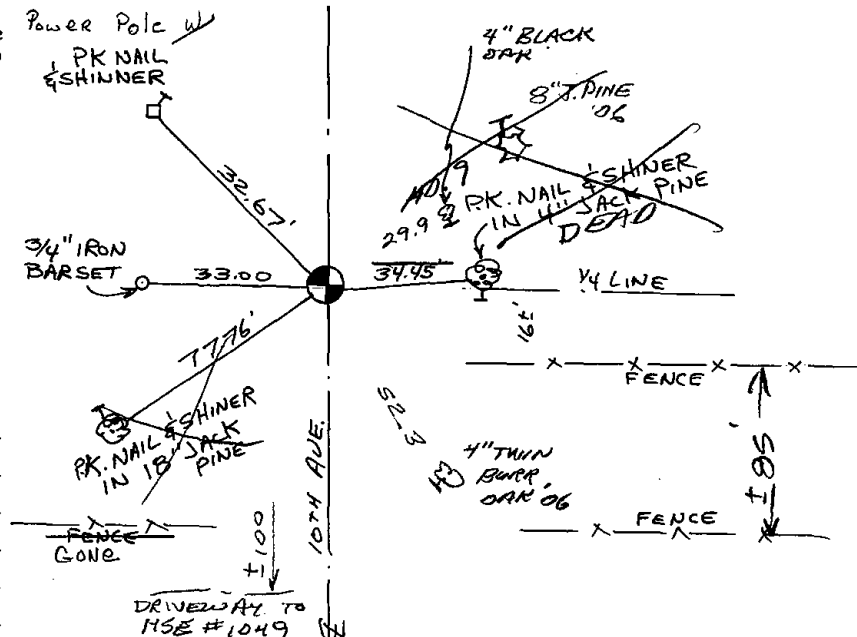
DATA SHOWN HERE ON CERTIFIED CORRECT:

*Frederic W. Zietlow*  
Registered Land Surveyor

DATE: MARCH 28, 1978

## TIE SKETCH

Show at least four ties, also fence lines, roads, topo, size and type of witness trees' and if off road - best way to arrive at corner.



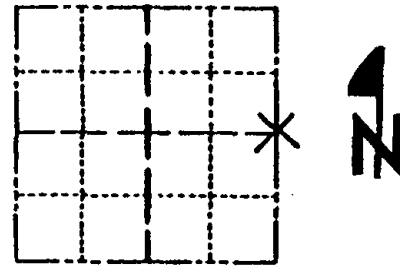
## MAINTENANCE RECORD

Date	Init.	Remarks
12-29-81	SK-RW	CORNER O.K.
1-17-86	GL	OK
1-10-91	KZ-JG	ALL OK
1-10-96	JG-SS	OK
1-25-01	JG	OK
3-07-06	JS-SS	2 NEW TIES
1-24-11	SS	1 NEW TIE

# Government Land Corner Certificate

ADAMS County  
 TYPE OF MONUMENT: STANDARD HARRISON  
 STATE PLANE COORDINATES: N \_\_\_\_\_  
 E \_\_\_\_\_  
 ELEVATION — M.S.L. DATUM: \_\_\_\_\_  
 THETA ANGLE: \_\_\_\_\_  
 FIELD BOOK: 567 PAGE 4  
 DRAWN BY: F.W. ZIETLOW

CORNER NO. 17  
 SECTION 4  
 TOWN 15N  
 RANGE 6E

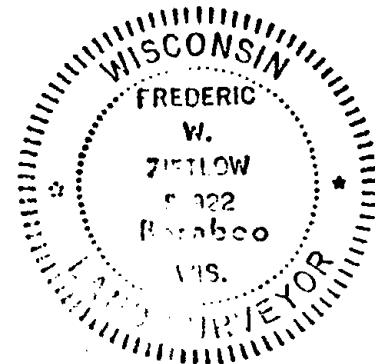


LOCATION  
(Indicated by 'X')

## BASIS FOR MONUMENT LOCATION.

Show info such as: History of corner, with reference to Vol. and pg., dates, surveyor; exact description of monument replaced; if location computed, by taped or EDM traverse; landowner remarks, etc. (Use reverse side if necessary)

SEAL:



RESEARCHED ADAMS COUNTY SURVEY RECORDS AND COULD FIND NO RESURVEYS ON FILE WHICH WERE PERTINENT TO THIS CORNER. NO EVIDENCE OF ORIGINAL GOV'T POST OR WITNESS. RE-SET THIS CORNER BY SINGLE PROPORTIONATE METHOD & PRORATING AGAINST ORIGINAL RUNNING NOTES. EDM DISTANCES WERE WITHIN REASON. NOTE OCCUPATION LINES DO NOT FIT INTERIOR ON THIS SECTION WHEN PROPER PROTRACTION IS USED

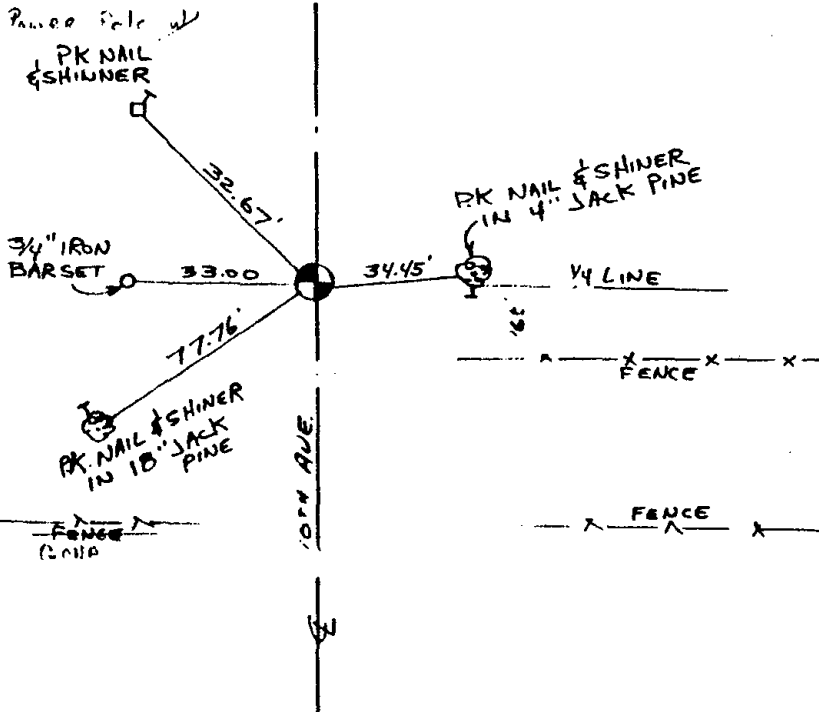
DATA SHOWN HERE ON CERTIFIED CORRECT:

*Frederic W. Zietlow*  
 Registered Land Surveyor

DATE: MARCH 28, 1978

## TIE SKETCH

Show at least four ties, also fence lines, roads, topo, size and type of witness trees and if off road - best way to arrive at corner.



## MAINTENANCE RECORD

Date	Init.	Remarks
12-29-81	SK-RW	WORKER OK
1-17-86	GA	OK
1-10-91	K7-JG	ALL OK
<del>4-23-91</del>	<del>...</del>	<del>...</del>