

## PUBLIC LAND SURVEY MONUMENT RECORD

TYPE OF MONUMENT: **M.C. ALUMINUM CAP IN CONCRETE (MEANDER CORNER)**  
 ADAMS COUNTY COORDINATES, NAD 83 (2007)

N. 132910.046

E. 526836.926

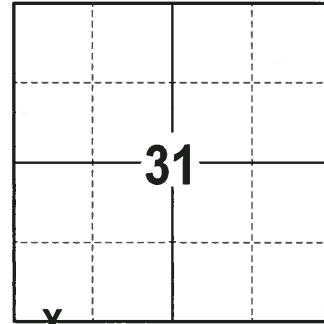
ELEVATION- \_\_\_\_\_ DATUM \_\_\_\_\_

FIELD WORK DATE: 10/04/2017

### BASIS FOR MONUMENT LOCATION

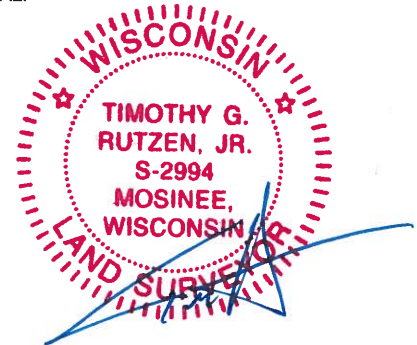
1976 - PLS 1191 RESEARCHED GOVERNMENT AND COUNTY RECORDS BUT DID NOT FIND ANY INFORMATION ABOUT THE CORNER. FOUND A CONCRETE MONUMENT WITH A CAST ALUMINUM CAP STAMPED IN THE FIELD THAT FITS OCCUPATION LINES AND HAS BEEN USED IN SEVERAL OF MID-STATE SURVEYS. TIED OUT FROM THE CORNER LOCATION.

2017 - PLS 2994 FOUND A M.C. (MEANDER CORNER) ALUMINUM CAP IN CONCRETE 8" ABOVE THE GROUND SURFACE AND 3 WITNESS TREES. THE M.C. (MEANDER CORNER) MONUMENT AGREES WITH THE EXISTING WITNESS TREES. ACCEPTED THE M.C. ALUMINUM CAP IN CONCRETE AS THE MEANDER CORNER. SET 4 NEW TIES AND MEASURED TO THE TIES AND WITNESS TREES.



**LOCATION**  
 (INDICATE CORNER BY "X")

SEAL:



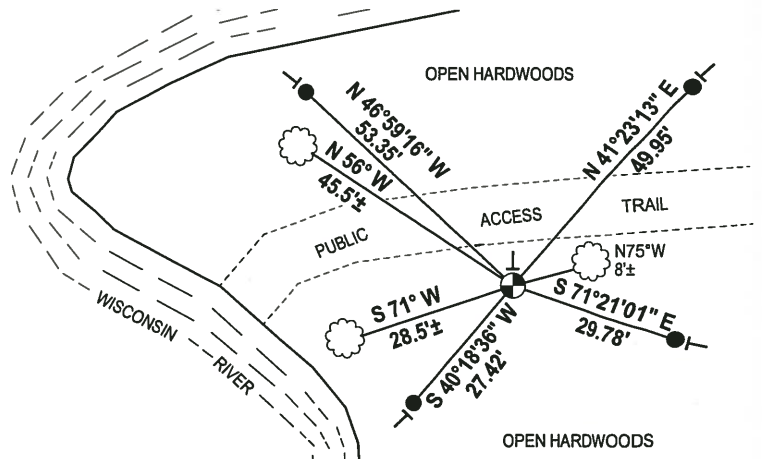
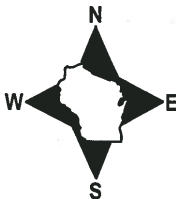
DATA SHOWN HERE ON THIS TIE SHEET IS CORRECT AND COMPLETE TO THE BEST OF MY KNOWLEDGE AND BELIEF.

PROFESSIONAL LAND SURVEYOR

DATE 12-4-17

### - TIE SKETCH

NOTE: THE CORNER FALLS 15'± SOUTH OF THE CENTERLINE OF THE PUBLIC ACCESS TRAIL AND 57'± EAST OF THE WISCONSIN RIVER EDGE OF WATER.



- 3/4" x 18" IRON REBAR SET, 1.50#/FT
- ⊙ M.C. ALUMINUM CAP IN CONCRETE FOUND
- VINYL "T" POST
- ☼ WITNESS TREE FOUND

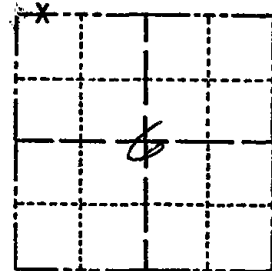
# ADAMS COUNTY

## Survey Monument Record

TYPE OF MONUMENT: Concrete w/ cap  
 STATE PLANE COORDINATES: N \_\_\_\_\_  
 E \_\_\_\_\_  
 ELEVATION — M.S.L. DATUM: \_\_\_\_\_  
 THETA ANGLE: \_\_\_\_\_  
 FIELD BOOK: 510 PAGE 47

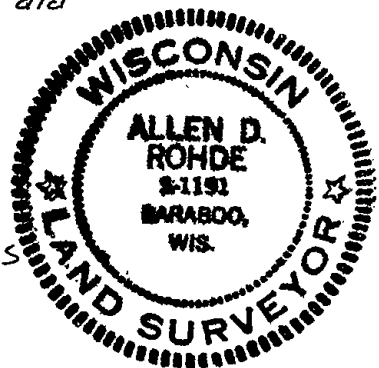
CORNER NO. 985  
 SECTION 6  
 TOWN 14 N  
 RANGE 6 E

MP #10 →



LOCATION  
(Indicated by 'X')

SEAL:



CERTIFIED CORRECT:

Allen D. Rohde  
 Registered Land Surveyor

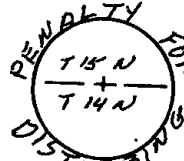
DATE: 6-7-76

### BASIS FOR MONUMENT LOCATION

(Use reverse side if necessary)

Show info such as: History of corner, with reference to Vol. and pg, dates, surveyor; exact description of monument replaced; if location computed, by taped or EDM traverse; landowner remarks, etc.

Researched Gov't & County Records but did find anything. Found conc. Mon set by person UNKNOWN with cast Aluminum cap stamped in field that fits occupation lines, and has been reached to in several of Mid-State surveys



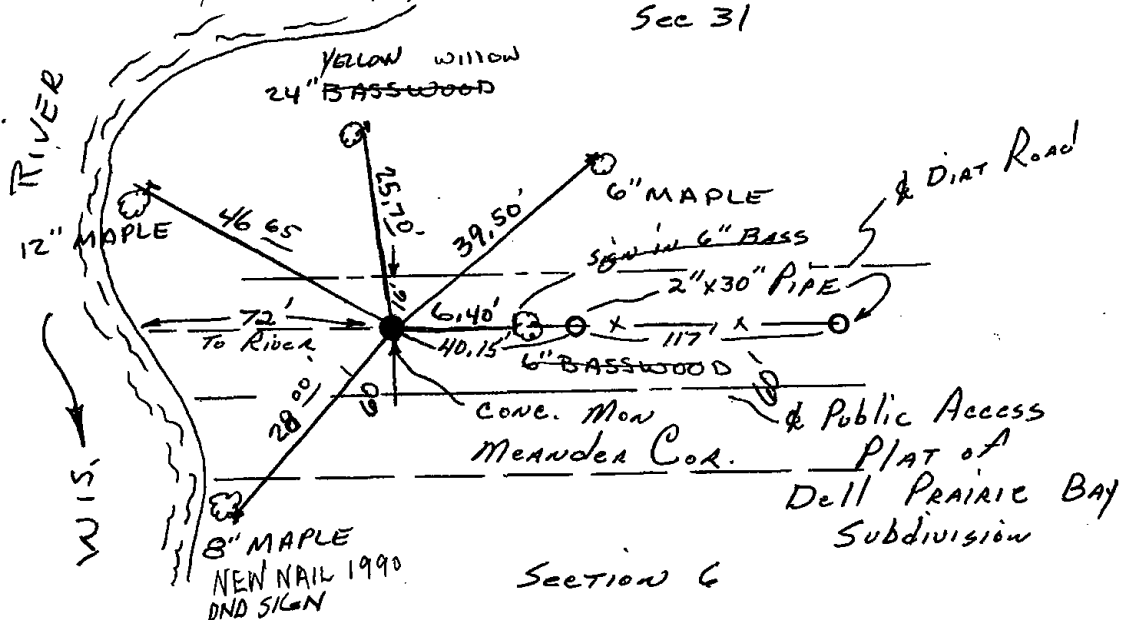
Monument is 0.140' in Dia & 0.80' Above ground. Left Monument in place and made new ties

References: Mas Elmer Owens Survey  
 AND PLAT OF DELL PRAIRIE BAY  
 TAPE TRAVERSE

### TIE SKETCH

(Show at least four ties)

CORNER O.K 12-22-81 SK-DW. ALL OK 3-7-01 JG-MH  
 " " 2-6-86 GR-SS ALL OK 10-30-06 JG  
 ALL OK 10-29-90 JG  
 1-GONE, COR OK 12/6/95 JG-SS



Section 6