

35 SECTION    15 TOWN    06 RANGE

# ADAMS COUNTY

COUNTY CORNER NO: 130  
ROMPORTOL ID: 41506350020

## PUBLIC LAND SURVEY MONUMENT RECORD

TYPE OF MONUMENT: HARRISON  
ADAMS COUNTY COORDINATES, NAD 83 (2007)

N. 132907.922

E. 549741.135

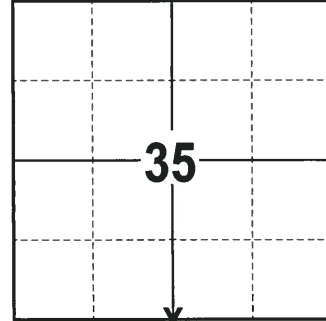
ELEVATION-      DATUM     

FIELD WORK DATE: 09/20/2017

### BASIS FOR MONUMENT LOCATION

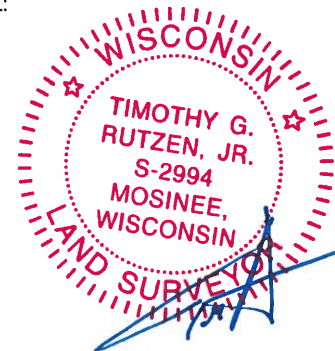
2014 - PLS 2443 THE LAST TIE SHEET ON FILE FOR THIS CORNER IS DATED JUNE 12, 1974 BY ANTHONY B. KIEDROWSKI, R.L.S. 878. KIEDROWSKI STATES HE FOUND A 1/2" DIA. X 12" IRON ROD AT THIS CORNER AND REPLACED IT WITH A HARRISON MONUMENT. NUMEROUS NOTATIONS BY OTHER SURVEYORS ALSO APPEAR ON THE TIE SHEET. FOUND THE STANDARD HARRISON CAST IRON MONUMENT AS NOTED BY KIEDROWSKI AND ESTABLISHED REFERENCE TIES TO PERPETUATE THE CORNER LOCATION.

2017 - PLS 2994 FOUND A HARRISON MONUMENT 8" BELOW THE ROAD SURFACE AND 4 TIES. THE MONUMENT AGREES WITH THE EXISTING TIES. ACCEPTED THE HARRISON MONUMENT AS THE CORNER LOCATION AND RE-MEASURED TO THE EXISTING TIES.



**LOCATION**  
(INDICATE CORNER BY "X")

SEAL:



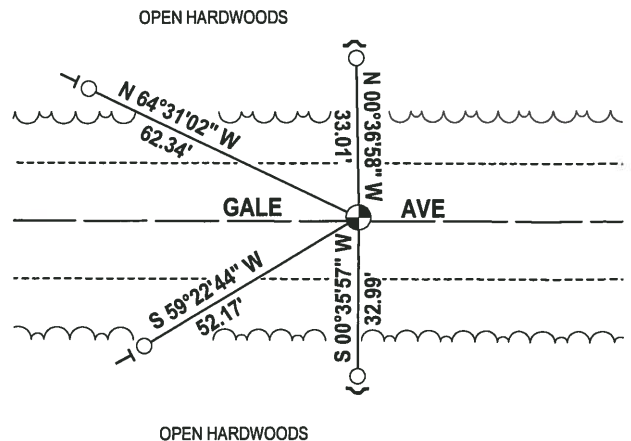
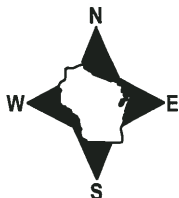
DATA SHOWN HERE ON THIS TIE SHEET IS CORRECT AND COMPLETE TO THE BEST OF MY KNOWLEDGE AND BELIEF.

PROFESSIONAL LAND SURVEYOR

DATE 11-15-17

### - TIE SKETCH -

NOTE: THE CORNER FALLS 1± NORTH OF THE CENTERLINE OF GALE AVE.



- 3/4" x 18" IRON REBAR SET, 1.50#/FT
- 3/4" IRON ROD FOUND
- ⊙ HARRISON FOUND
- ✓ STEEL FENCE POST
- VINYL "T" POST

# ADAMS COUNTY SURVEY MONUMENT RECORD

CORNER No. 399  
SECTION 2  
TOWN 14N  
RANGE 6E

TYPE OF MONUMENT: STD. HARRISON CAST IRON  
ADAMS COUNTY COORDINATES: N = 132,907.83'  
E = 549,741.20'

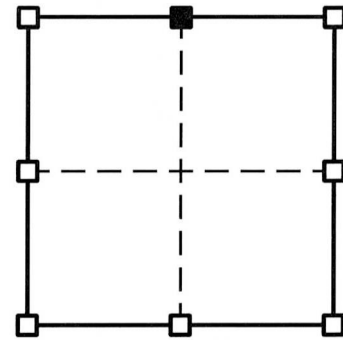
DATUM: NAD '83/2007 ADJ.-GPS AND CONVENTIONAL CONTROL

WITNESSES TO CORNER LOCATION: TODD T. RUMMLER, MARK A. MAHONEY

## BASIS FOR MONUMENT LOCATION

SHOW INFO SUCH AS: HISTORY OF CORNER, WITH REFERENCE TO VOL. AND PG., DATES, SURVEYOR; EXACT DESCRIPTION OF MONUMENT REPLACED; IF LOCATION COMPUTED, BY TAPED OR EDM TRAVERSE; LANDOWNER REMARKS, ETC.

THE LAST TIE SHEET ON FILE FOR THIS CORNER IS DATED JUNE 12, 1974 BY ANTHONY B. KIEDROWSKI, R.L.S. 878. KIEDROWSKI STATES HE FOUND A 1/2" DIA. X 12" IRON ROD AT THIS CORNER AND REPLACED IT WITH A HARRISON MONUMENT. NUMEROUS NOTATIONS BY OTHER SURVEYORS ALSO APPEAR ON THE TIE SHEET. I FOUND THE STANDARD HARRISON CAST IRON MONUMENT AS NOTED BY KIEDROWSKI AND ESTABLISHED REFERENCE TIES AS SHOWN BELOW TO PERPETUATE THE CORNER LOCATION.

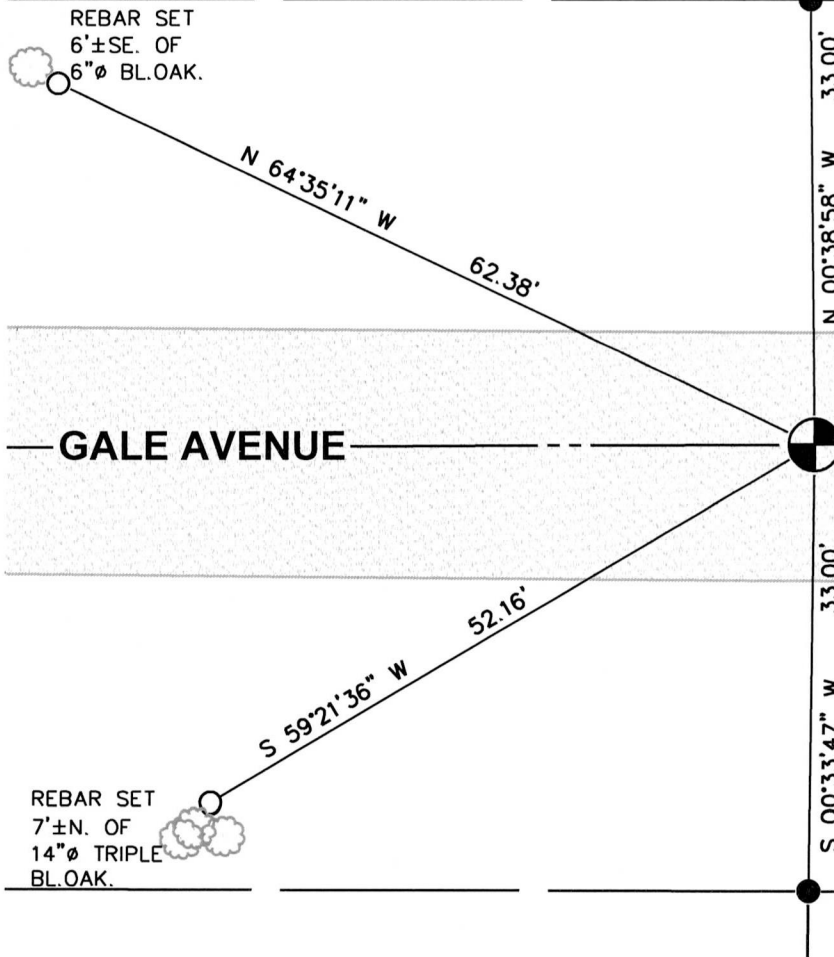


■ = CORNER LOCATION

AFFIX LAND SURVEYOR SEAL



## TIE SKETCH



I, TODD T. RUMMLER, PLS-2443 CERTIFY THAT THE CORNER LOCATION SHOWN ON THIS RECORD WAS DETERMINED BY ME OR UNDER MY DIRECTION AND CONTROL AND THAT THIS ADAMS COUNTY SURVEY MONUMENT RECORD IS CORRECT AND COMPLETE TO THE BEST OF MY KNOWLEDGE AND BELIEF.

## LEGEND

- FOUND STD. HARRISON CAST IRON MONUMENT- 1/4 CORNER SECTION 2, T14N, R6E
- FOUND 3/4"Ø REBAR
- SET 3/4"Ø X 24" LONG REBAR WT. = 1.502 LBS./LN.FT.

SEAL-COATED ROAD SURFACE



NOT TO SCALE