

35 SECTION 15 TOWN 06 RANGE

ADAMS COUNTY

COUNTY CORNER NO: 131
ROMPORTOL ID: 41506350000

PUBLIC LAND SURVEY MONUMENT RECORD

TYPE OF MONUMENT: HARRISON
ADAMS COUNTY COORDINATES, NAD 83 (2007)

N. 132902.976

E. 552392.715

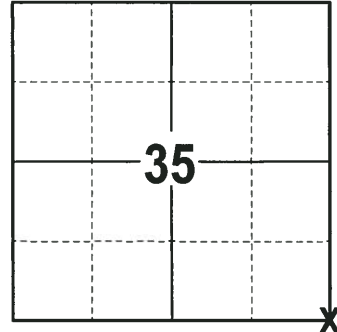
ELEVATION- DATUM

FIELD WORK DATE: 09/20/2017

BASIS FOR MONUMENT LOCATION

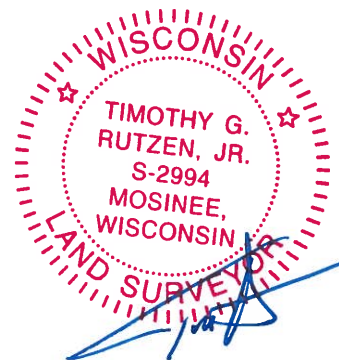
2014 - PLS 2443 THE LAST TIE SHEET ON FILE FOR THIS CORNER IS DATED MAY 26, 1976 BY FREDERIC W. ZIETLOW, R.L.S 922. ZIETLOW STATES HE FOUND A POINTED STONE AT THIS CORNER AND REPLACED IT WITH A HARRISON MONUMENT. NUMEROUS NOTATIONS BY OTHER SURVEYORS ALSO APPEAR ON THE TIE SHEET. FOUND THE STANDARD HARRISON CAST IRON MONUMENT AS NOTED BY ZIETLOW AND ESTABLISHED REFERENCE TIES TO PERPETUATE THE CORNER LOCATION.

2017 - PLS 2994 FOUND A HARRISON MONUMENT 6" BELOW THE ROAD SURFACE, 4 TIES, 1 PROPERTY IRON AND 1 WITNESS TREE STUMP. WHILE DIGGING FOR THE HARRISON MONUMENT A LOCAL FARMER STOPPED AND SAID THAT THE CORNER IS AT THE CENTERLINE INTERSECTION. FOUND A 1/2" IRON ROD AT THIS LOCATION, ORIGIN OF THIS MONUMENT IS UNKNOWN. ACCEPTED THE HARRISON MONUMENT AS THE CORNER LOCATION, BEING THAT IT HAS BEEN USED IN NUMEROUS SURVEYS AND HAS BEEN ACCEPTED AS THE CORNER LOCATION SINCE 1976. HARRISON FITS WELL WITH THE EXISTING TIES AND WITNESS TREE STUMP FROM WHEN PLS 922 SET THE HARRISON MONUMENT. RE-MEASURED TO THE EXISTING TIES, PROPERTY IRON AND WITNESS TREE STUMP.



LOCATION
(INDICATE CORNER BY "X")

SEAL:



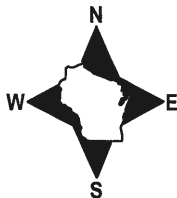
DATA SHOWN HERE ON THIS TIE SHEET IS CORRECT AND COMPLETE TO THE BEST OF MY KNOWLEDGE AND BELIEF.

PROFESSIONAL LAND SURVEYOR

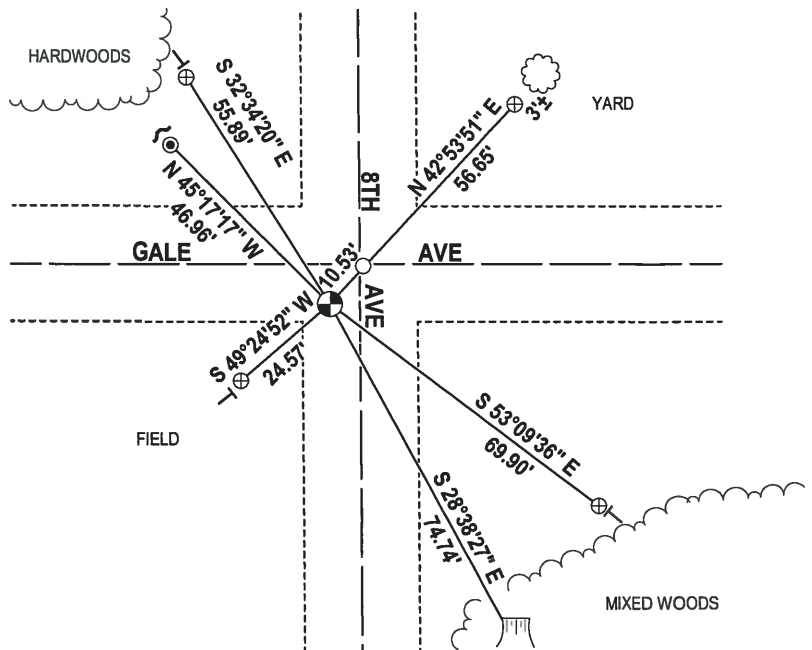
DATE 11-15-17

- TIE SKETCH -

NOTE: THE CORNER FALLS 8'± SOUTH OF THE CENTERLINE OF GALE AVE AND 6'± WEST OF THE CENTERLINE OF 8TH AVE.



- 1/2" IRON ROD FOUND
- ⊕ 3/4" IRON ROD FOUND
- ⊙ 3/4" IRON ROD FOUND
- ⊗ HARRISON FOUND
- ~ STEEL FENCE POST
- VINYL "T" POST
- ▭ WITNESS TREE STUMP FOUND
- ☼ WITNESS TREE FOUND



ADAMS COUNTY SURVEY MONUMENT RECORD

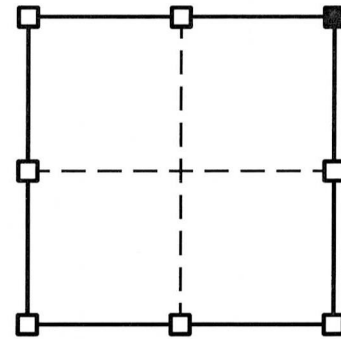
CORNER No. 983
SECTION 2
TOWN 14N
RANGE 6E

TYPE OF MONUMENT: STD. HARRISON CAST IRON

ADAMS COUNTY COORDINATES: N = 132,902.99'
E = 552,392.74'

DATUM: NAD '83/2007 ADJ.-GPS AND CONVENTIONAL CONTROL

WITNESSES TO CORNER LOCATION: TODD T. RUMMLER, MARK A. MAHONEY



■ = CORNER LOCATION

AFFIX LAND SURVEYOR SEAL

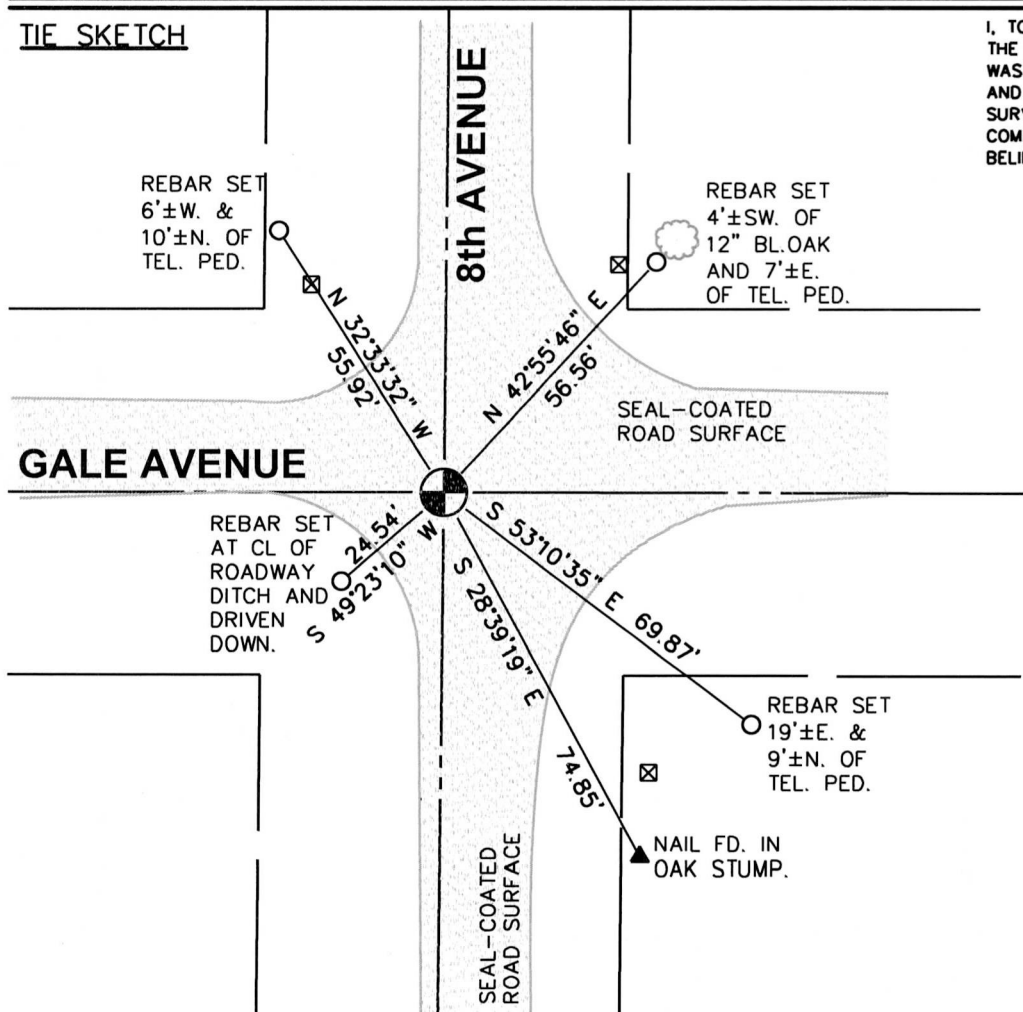
BASIS FOR MONUMENT LOCATION

SHOW INFO SUCH AS: HISTORY OF CORNER, WITH REFERENCE TO VOL. AND PG., DATES, SURVEYOR; EXACT DESCRIPTION OF MONUMENT REPLACED; IF LOCATION COMPUTED, BY TAPED OR EDM TRAVERSE; LANDOWNER REMARKS, ETC.

THE LAST TIE SHEET ON FILE FOR THIS CORNER IS DATED MAY 26, 1976 BY FREDERIC W. ZIETLOW, R.L.S. 922. ZIETLOW STATES HE FOUND A POINTED STONE AT THIS CORNER AND REPLACED IT WITH A HARRISON MONUMENT. NUMEROUS NOTATIONS BY OTHER SURVEYORS ALSO APPEAR ON THE TIE SHEET. I FOUND THE STANDARD HARRISON CAST IRON MONUMENT AS NOTED BY ZIETLOW AND ESTABLISHED REFERENCE TIES AS SHOWN BELOW TO PERPETUATE THE CORNER LOCATION.



TIE SKETCH



I, TODD T. RUMMLER, PLS-2443 CERTIFY THAT THE CORNER LOCATION SHOWN ON THIS RECORD WAS DETERMINED BY ME OR UNDER MY DIRECTION AND CONTROL AND THAT THIS ADAMS COUNTY SURVEY MONUMENT RECORD IS CORRECT AND COMPLETE TO THE BEST OF MY KNOWLEDGE AND BELIEF.

LEGEND

- FOUND STD. HARRISON CAST IRON MONUMENT- NE CORNER SECTION 2, T14N, R6E
- SET 3/4"Ø X 24" LONG REBAR WT. = 1.502 LBS./LN.FT.
- TELEPHONE PEDESTAL



NOT TO SCALE