

36
SECTION

15
TOWN

06
RANGE

ADAMS COUNTY

COUNTY CORNER NO: 133

ROMPORTOL ID: 41506360000

PUBLIC LAND SURVEY MONUMENT RECORD

TYPE OF MONUMENT: HARRISON
ADAMS COUNTY COORDINATES, NAD 83 (2007)

N. 132902.565

E. 557671.892

ELEVATION- DATUM

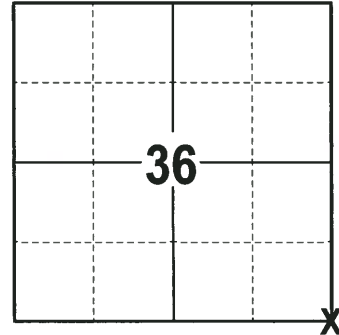
FIELD WORK DATE: 09/13/2017

BASIS FOR MONUMENT LOCATION

1975 - PLS 922 FOUND PK NAIL, SET BY SAM MULLEN. EXCAVATED AND FOUND 8"X6"X5" STONE. WE RETRACED MULLEN'S SURVEY TO CONFIRM THESE POINTS ARE IN IDENTICAL HORIZONTAL POSITION. SET A 30" HARRISON MONUMENT AT THE CORNER LOCATION AND TIED OUT.

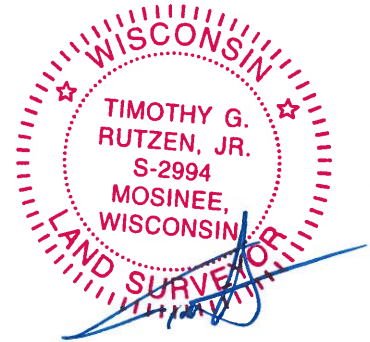
1999 - PLS 1397 EXISTING MONUMENT WAS FOUND AT THE CORNER LOCATION. MONUMENT WAS REMOVED AND RAISED DUE TO RECONSTRUCTION OF C.T.H. B. RE-TIED CORNER.

2017 - PLS 2994 FOUND A HARRISON MONUMENT 6" BELOW THE ROAD SURFACE AND 5 WITNESSES. THE MONUMENT AGREES WITH THE EXISTING WITNESSES. ACCEPTED THE HARRISON MONUMENT AS THE CORNER LOCATION. SET 4 NEW TIES AND MEASURED TO THE TIES AND WITNESSES.



LOCATION
(INDICATE CORNER BY "X")

SEAL:



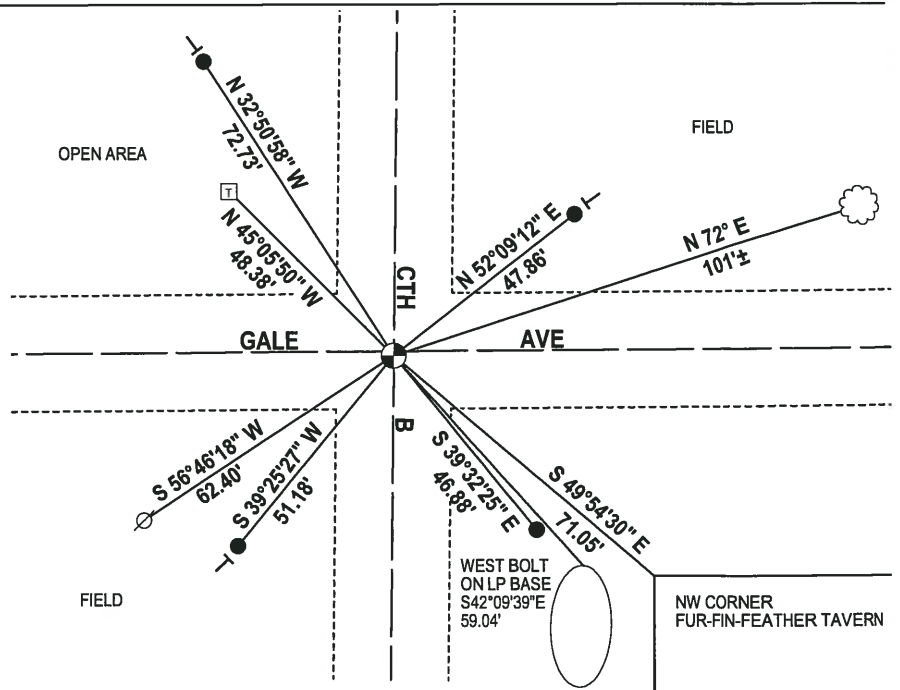
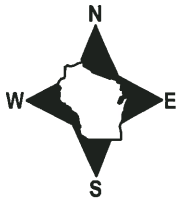
DATA SHOWN HERE ON THIS TIE SHEET IS CORRECT AND COMPLETE TO THE BEST OF MY KNOWLEDGE AND BELIEF.

PROFESSIONAL LAND SURVEYOR

DATE 11-15-17

- TIE SKETCH

NOTE: THE CORNER FALLS 1± SOUTH OF THE CENTERLINE OF GALE AVE.



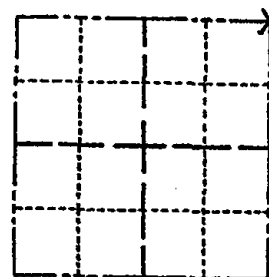
- 3/4" x 18" IRON REBAR SET, 1.50#/FT
- HARRISON FOUND
- ⊗ WITNESS POWER POLE
- ⊠ TELEPHONE BOX (TOP CENTER)
- └ VINYL "T" POST
- ☼ WITNESS TREE FOUND

ADAMS COUNTY

Survey Monument Record

TYPE OF MONUMENT: 30" HARRISON MARKER
 STATE PLANE COORDINATES: N _____
 E _____
 ELEVATION — M.S.L. DATUM: _____
 THETA ANGLE: _____
 FIELD BOOK: _____ PAGE _____

CORNER NO. 745
 SECTION 1
 TOWN 14N
 RANGE 6E



LOCATION
(Indicated by 'X')

SEAL:

BASIS FOR MONUMENT LOCATION

(Use reverse side if necessary)

Show info such as: History of corner, with reference to Vol. and pg, dates, surveyor; exact description of monument replaced; if location computed, by taped or EDM traverse; landowner remarks, etc.

Existing Monument was found in place. Monument was removed and raised due to reconstruction of C.T.H. "B". All tie measurements are horizontal measurements unless noted otherwise.

3-5-01- ALL OK M.H. JS
 ALL OK, 1-18-06-JG

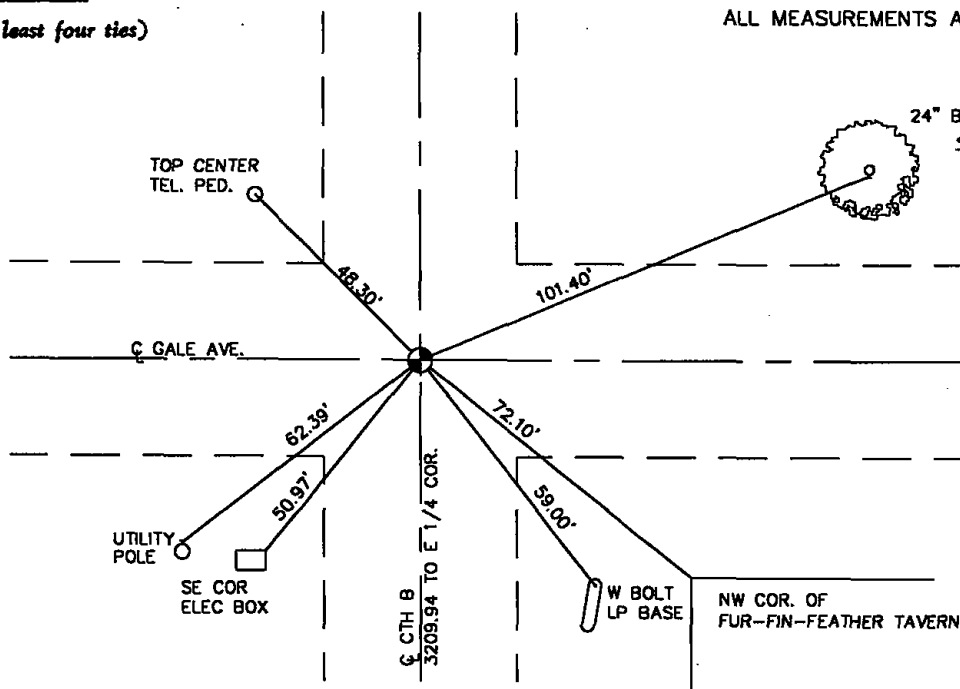


CERTIFIED CORRECT?
Dennis J. Russell
 Registered Land Surveyor
 DATE: July 26, 1999

TIE SKETCH

(Show at least four ties)

ALL MEASUREMENTS ARE HORIZONTAL.





ADAMS COUNTY

Survey Monument Record

TYPE OF MONUMENT: 30" HARRISON MARKER

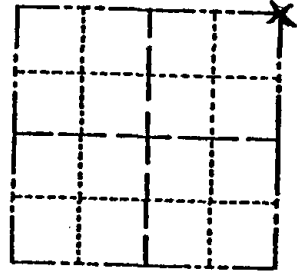
STATE PLANE COORDINATES: N _____
E _____

ELEVATION — M.S.L. DATUM: _____

THETA ANGLE: _____

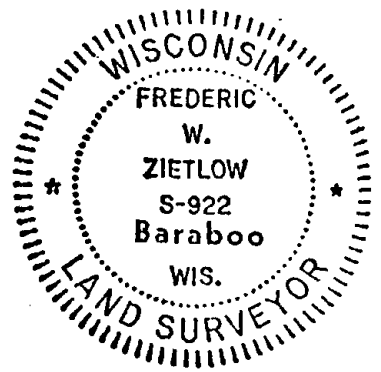
FIELD BOOK: _____ PAGE _____

CORNER NO. 745
SECTION 1
TOWN 14N
RANGE 6E



LOCATION
(Indicated by 'X')

SEAL:



BASIS FOR MONUMENT LOCATION

(Use reverse side if necessary)

Show info such as: History of corner, with reference to Vol. and pg. dates, surveyor; exact description of monument replaced; if location computed, by taped or EDM traverse; landowner remarks, etc.

FOUND PK NAIL, SET BY SAM MULLEN,
EXCAVATED AND FOUND 8" X 6" X 5" STONE
WE RETRACED MULLEN'S SURVEY TO FIND THESE
POINTS WHICH ARE IN IDENTICAL HORIZONTAL
POSITION

CORNER O.K. 10-14-76 JS-SS
TAPED TIES O.K. 10/15/81 TH-LC
New ties 5-14-91 MC
COR OK 12/6/95 JC-SS

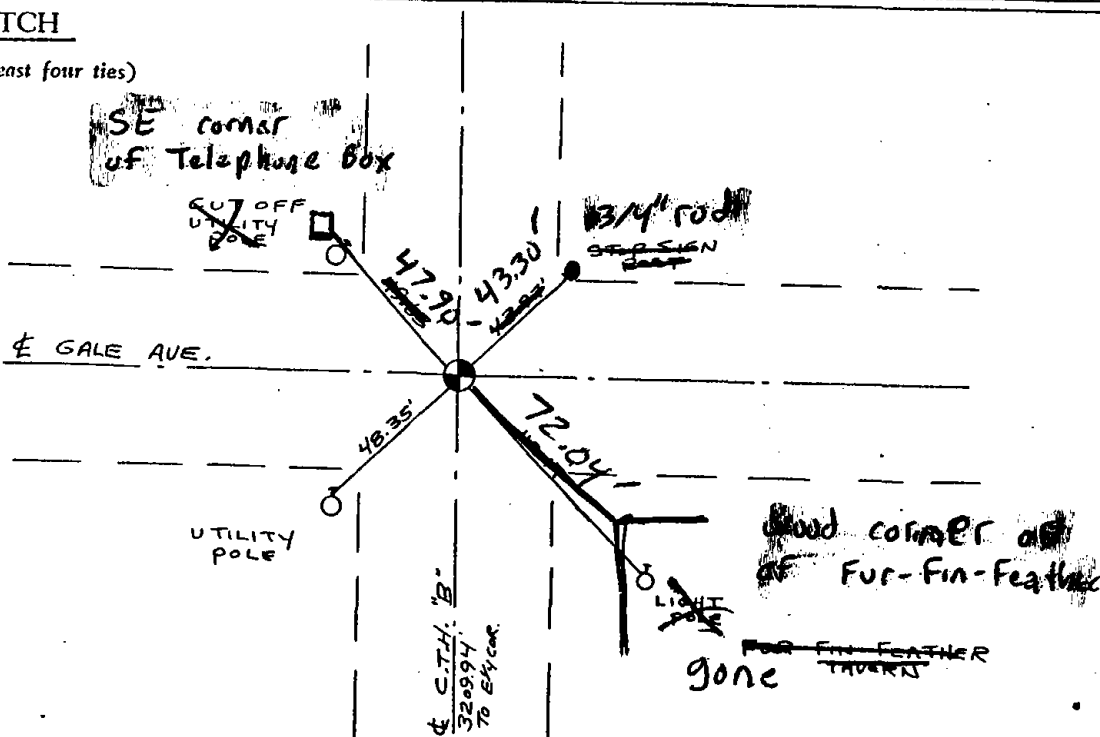
CERTIFIED CORRECT:

Frederic W. Zietlow
Registered Land Surveyor

DATE: APRIL 30, 1975

TIE SKETCH

(Show at least four ties)



1

2

3

4

ADAMS COUNTY

Survey Monument Record

TYPE OF MONUMENT: 30" HARRISON MARKER

STATE PLANE COORDINATES: N _____

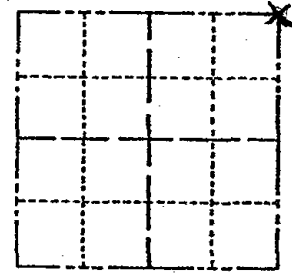
E _____

ELEVATION — M.S.L. DATUM: _____

THETA ANGLE: _____

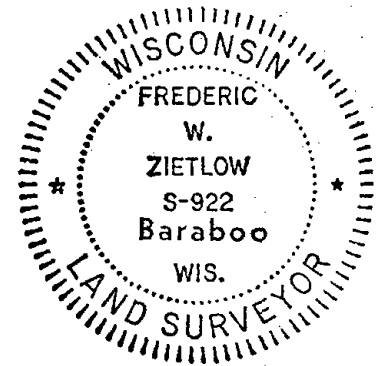
FIELD BOOK: _____ PAGE _____

CORNER NO. 745
SECTION 1
TOWN 14 N
RANGE 6 E



LOCATION (Indicated by 'X')

SEAL:



BASIS FOR MONUMENT LOCATION

(Use reverse side if necessary)

Show info such as: History of corner, with reference to Vol. and pg, dates, surveyor; exact description of monument replaced; if location computed, by taped or EDM traverse; landowner remarks, etc.

FOUND PK NAIL, SET BY SAM MULLEN,
EXCAVATED AND FOUND 8" X 6" X 5" STONE
WE RETRACED MULLEN'S SURVEY TO FIND THESE
POINTS WHICH ARE IN IDENTICAL HORIZONTAL
POSITION

CORNER O.K. 10-14-76 JS-SS

MON TIES O.K. 10/12/81 TH-LC

" " 2/6-86 GR-SS

ALK OK 11-1-90 JG-SS

SEE TIE SHEET DTD. 5/14/91 me

COR. OK 12/6/95 JG-SS

CERTIFIED CORRECT:

Frederic W. Zietlow

Registered Land Surveyor

DATE: APRIL 30, 1975

TIE SKETCH

(Show at least four ties)

