

03  
SECTION

14  
TOWN

06  
RANGE

# ADAMS COUNTY

COUNTY CORNER NO: 28

ROMPORTOL ID: 41406030020

## PUBLIC LAND SURVEY MONUMENT RECORD

TYPE OF MONUMENT: HARRISON  
ADAMS COUNTY COORDINATES, NAD 83 (2007)

N. 126682.730

E. 544389.506

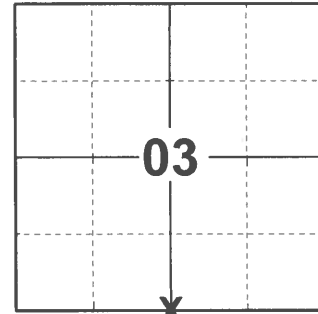
ELEVATION- \_\_\_\_\_ DATUM \_\_\_\_\_

FIELD WORK DATE: 12/15/2020

### BASIS FOR MONUMENT LOCATION

1975 - PLS 922 CHECKED COUNTY SURVEY RECORDS AND NO RESURVEYS WERE ON FILE. FOUND OLD DOWN FENCE CORNER AND MONUMENTED SAME. FIT EDM TRAVERSE OF SECTION GOOD.

2020 - PLS 2675 FOUND HARRISON FLUSH WITH THE GROUND AND DID NOT RECOVER ANY EXISTING TIES OR WITNESSES. ACCEPTED THE HARRISON AS THE CORNER LOCATION AND SET 4 NEW TIES.



LOCATION

(INDICATE CORNER BY "X")

SEAL:

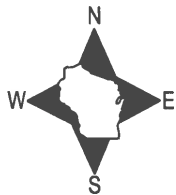


DATA SHOWN HERE ON THIS TIE SHEET IS CORRECT AND COMPLETE TO THE BEST OF MY KNOWLEDGE AND BELIEF.

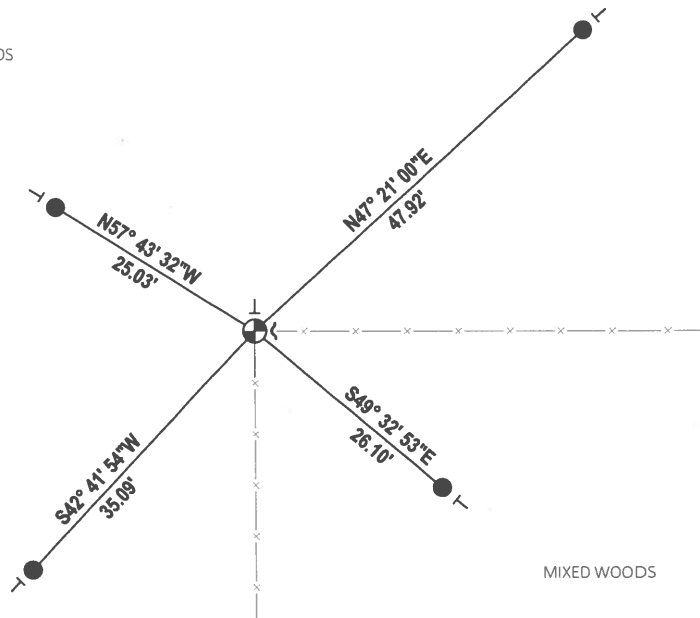
PROFESSIONAL LAND SURVEYOR

DATE 1/18/2021

### - TIE SKETCH



MIXED WOODS



MIXED WOODS

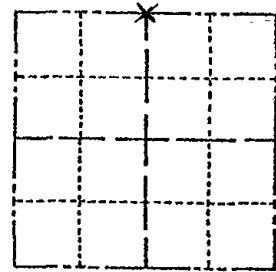
- SET 3/4" x 18" IRON REBAR, 1.50#/FT
- ⊕ FOUND HARRISON MONUMENT
- ┌ STEEL FENCE POST
- └ VINYL "T" POST

# ADAMS COUNTY

## Survey Monument Record

TYPE OF MONUMENT: 30" HARRISON  
 STATE PLANE COORDINATES: N \_\_\_\_\_  
 E \_\_\_\_\_  
 ELEVATION — M.S.L. DATUM: \_\_\_\_\_  
 THETA ANGLE: \_\_\_\_\_  
 FIELD BOOK: \_\_\_\_\_ PAGE \_\_\_\_\_

CORNER NO. 723  
 SECTION 10  
 TOWN 14N  
 RANGE 6E



### BASIS FOR MONUMENT LOCATION

(Use reverse side if necessary)

Show info such as: History of corner, with reference to Vol. and pg. dates, surveyor; exact description of monument replaced; if location computed, by taped or EDM traverse; landowner remarks, etc.

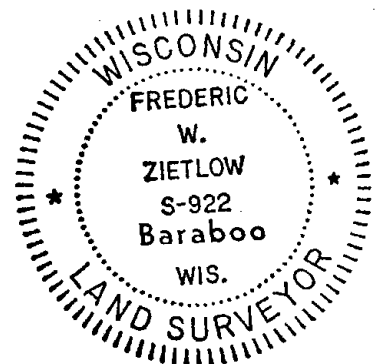
CHECKED COUNTY SURVEY RECORDS &  
 NO RESURVEYS WERE ON FILE. FOUND  
 OLD DOWN FENCE CORNER & MONUMENTED  
 SAME. FIT EDM TRAVERSE OF SECTION  
 GOOD.

CORNER O.K. 1-2-76 20-SS  
 CORNER O.K. 12-22-81 JK-DW  
 2-18-86 68-SS  
 " 7-15-91 JG-SS

2 NEW TIES 10-11-01 SS  
 ALL OK, 11-27-86, JG-SS

SEAL:

LOCATION  
(Indicated by 'X')



CERTIFIED CORRECT:

*Frederic W. Zietlow*

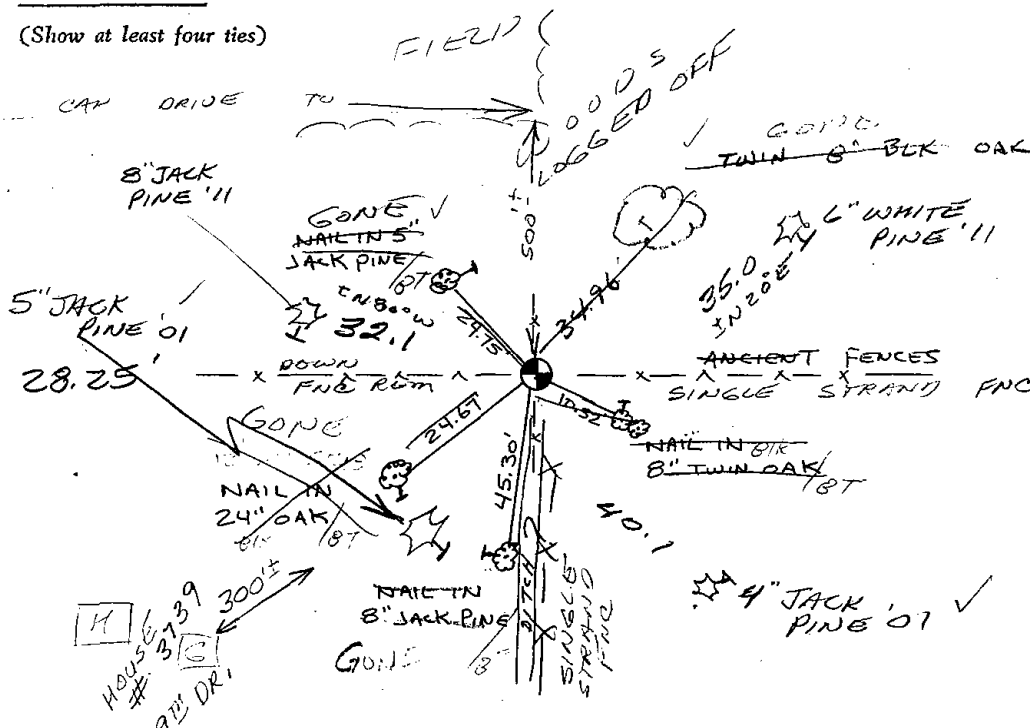
Registered Land Surveyor

DATE: JULY 31, 1975

### TIE SKETCH

Enter from 1075 Ch. and 5th Drive

(Show at least four ties)



FENCE/STEEL  
 POSTS EAST  
 & SOUTH