

## PUBLIC LAND SURVEY MONUMENT RECORD

TYPE OF MONUMENT: HARRISON (BROKEN-TOP)  
 ADAMS COUNTY COORDINATES, NAD 83 (2007)

N. 126906.371

E. 549682.043

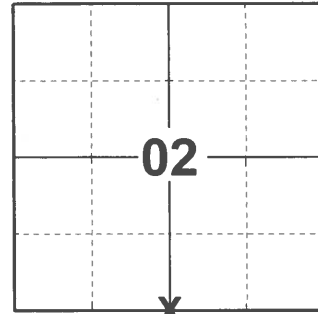
ELEVATION-        DATUM       

FIELD WORK DATE: 12/14/2020

### BASIS FOR MONUMENT LOCATION

1976 - PLS 922 CHECKED COUNTY SURVEY RECORDS FOR OLD RESURVEYS AND NONE WERE ON FILE. FOUND 2" IRON PIPE WHICH IS THE SOUTHWEST CORNER OF TALL PINES PLAT. SET BY SURVEYOR MULOCK IN 1972. FIT EDM TRAVERSE OF SECTION GOOD.

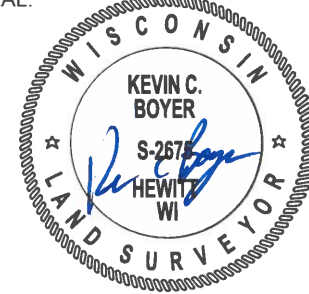
2020 - PLS 2675 FOUND HARRISON (BROKEN-TOP) 18"± BELOW THE DRIVEWAY SURFACE AND 5 WITNESSES. THE MONUMENT AGREES WITH ALL 5 WITNESSES. ACCEPTED THE HARRISON (BROKEN-TOP) AS THE CORNER LOCATION. SET 4 NEW TIES AND MEASURED TO THE EXISTING WITNESSES.



LOCATION

(INDICATE CORNER BY "X")

SEAL:



DATA SHOWN HERE ON THIS TIE SHEET IS CORRECT AND COMPLETE TO THE BEST OF MY KNOWLEDGE AND BELIEF.

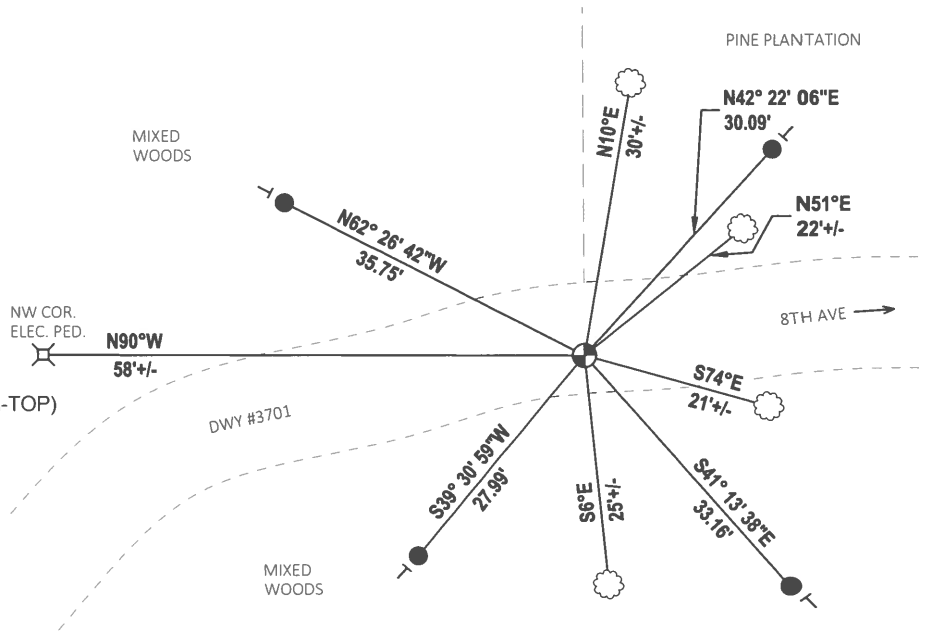
PROFESSIONAL LAND SURVEYOR

DATE 1/18/2021

### TIE SKETCH



- SET 3/4" x 18" IRON REBAR, 1.50#/FT
- ⊕ FOUND HARRISON MONUMENT (BROKEN-TOP)
- ┆ VINYL "T" POST
- ☼ WITNESS TREE

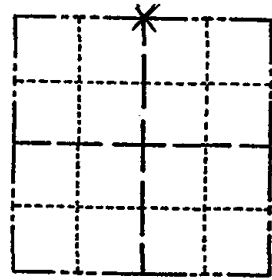


# ADAMS COUNTY

## Survey Monument Record

TYPE OF MONUMENT: 30" HARRISON  
 STATE PLANE COORDINATES: N \_\_\_\_\_  
 E \_\_\_\_\_  
 ELEVATION — M.S.L. DATUM: \_\_\_\_\_  
 THETA ANGLE: \_\_\_\_\_  
 FIELD BOOK: \_\_\_\_\_ PAGE \_\_\_\_\_

CORNER NO. 926  
 SECTION 11  
 TOWN 14 N  
 RANGE 6 E



LOCATION  
(Indicated by 'X')

SEAL:

### BASIS FOR MONUMENT LOCATION

(Use reverse side if necessary)

Show info such as: History of corner, with reference to Vol. and pg, dates, surveyor; exact description of monument replaced; if location computed, by taped or EDM traverse; landowner remarks, etc.

CHECKED COUNTY SURVEY RECORDS FOR OLD RESURVEYS & NONE WERE ON FILE. FOUND 2" IRON PIPE WHICH IS THE SOUTHWEST CORNER OF TALL PINES PLAT. SET BY SURVEYOR MULLOCK IN 1972. FIT EDM. TRAVERSE OF SECTION GOOD.

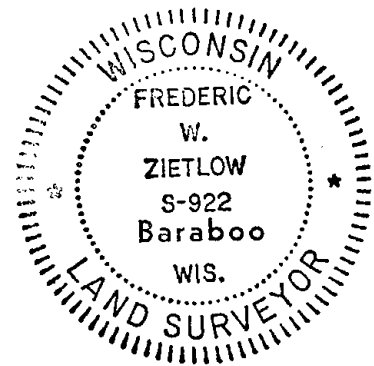
CORNER O.K. 12-21-81 SK-DW  
 " " 2-6-86 GL-SS

ALL OK 11-1-90 JG-SS

ALL OK MH-SS 3-5-01

ALL OK, 10-30-06-JG

1 NEW TIE 12-01-11 SS



CERTIFIED CORRECT:

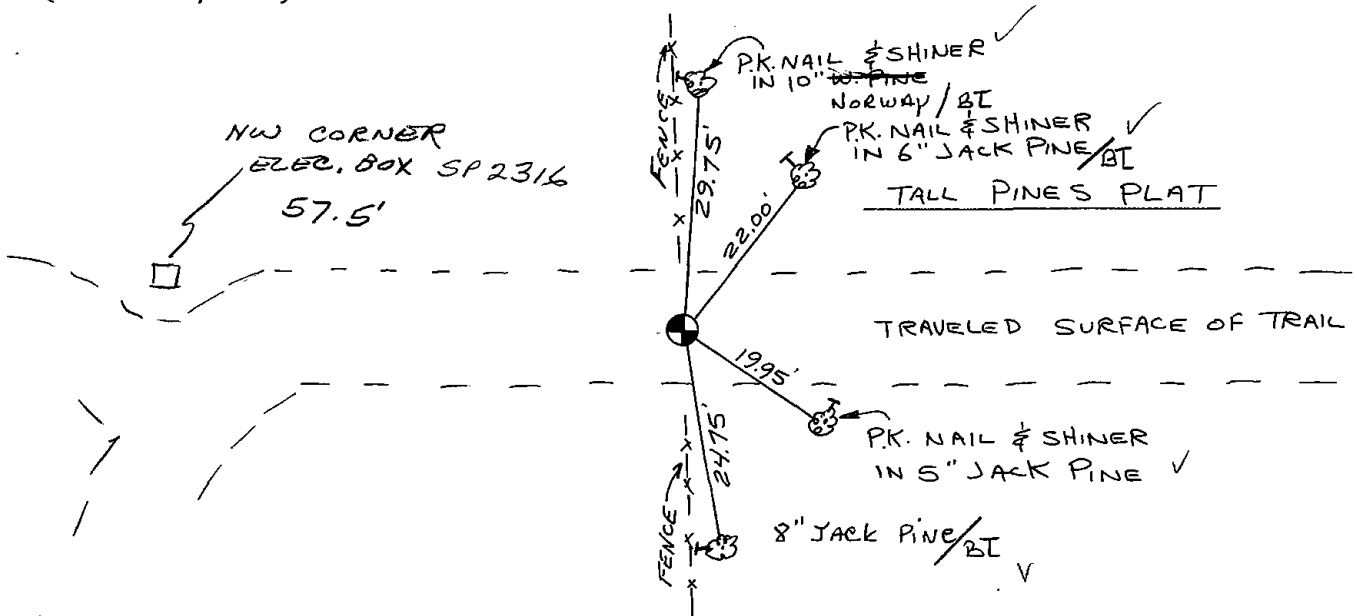
*Frederic W. Zietlow*

Registered Land Surveyor

DATE: MARCH 12, 1976

### TIE SKETCH

(Show at least four ties)

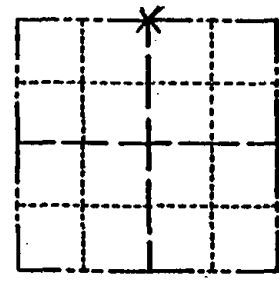


# ADAMS COUNTY

## Survey Monument Record

TYPE OF MONUMENT: 30" HARRISON  
 STATE PLANE COORDINATES: N \_\_\_\_\_  
 R \_\_\_\_\_  
 ELEVATION — M.S.L. DATUM: \_\_\_\_\_  
 THETA ANGLE: \_\_\_\_\_  
 FIELD BOOK: \_\_\_\_\_ PAGE \_\_\_\_\_

CORNER NO. 926  
 SECTION 11  
 TOWN 14N  
 RANGE 6E



LOCATION  
(Indicated by 'X')

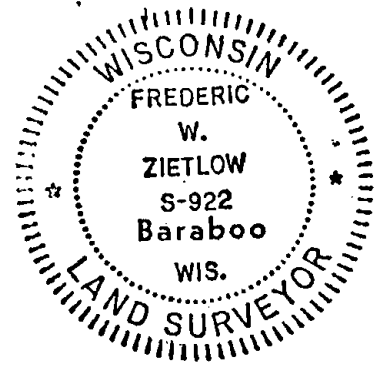


### BASIS FOR MONUMENT LOCATION

(Use reverse side if necessary)

Show info such as: History of corner, with reference to Vol. and pg. dates, surveyor; exact description of monument replaced; if location computed, by taped or EDM traverse; landowner remarks, etc.

SEAL:



CHECKED COUNTY SURVEY RECORDS FOR OLD RESURVEYS & NONE WERE ON FILE. FOUND 2" IRON PIPE WHICH IS THE SOUTHWEST CORNER OF TALL PINES PLAT. SET BY SURVEYOR MULOCK IN 1972. FIT EDM. TRAVERSE OF SECTION GOOD.

CORNER O.K. 12-21-81 SK-DW

29 OCT 99. FOUND HARRISON WITH TOP 5" BROKEN OFF. REMAINDER TIPPED NORTHERLY. RESET REMAINDER BASED ON TIES, WITH TOP OF MON. ~~TOP~~ 1 FOOT BELOW SURFACE. FD. TELEPHONE WIRE 4" SOUTH OF MONUMENT (AS RESET) ABOUT 4" BELOW TOP OF HARRISON  
 — S. HIGLEY  
 TIES OK May 15 84 K. Carlson

CERTIFIED CORRECT:

*Frederic W. Zietlow*

Registered Land Surveyor

DATE: MARCH 12, 1976

### TIE SKETCH

TIES OK 10-17-03 M. Carlson

(Show at least four ties)

