

08
SECTION

14
TOWN

06
RANGE

ADAMS COUNTY

COUNTY CORNER NO: 36

ROMPORTOL ID: 41406082000

PUBLIC LAND SURVEY MONUMENT RECORD

TYPE OF MONUMENT: HARRISON
ADAMS COUNTY COORDINATES, NAD 83 (2007)

N. 123854.126

E. 536506.184

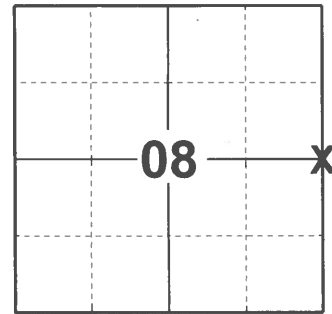
ELEVATION- _____ DATUM _____

FIELD WORK DATE: 12/18/2020

BASIS FOR MONUMENT LOCATION

1975 - PLS 922 EXCAVATED AND FOUND 8" SQUARE STONE MONUMENTED SAME. CHECKED COUNTY SURVEY RECORDS FOR RESURVEYS AND NONE WERE ON FILE. FIT TAPE-TRANSIT TRAVERSE OF SECTION GOOD. STONE IS UNDER HARRISON.

2020 - PLS 2675 FOUND HARRISON 4"± BELOW THE ROAD SURFACE AND 3 TIES. THE MONUMENT AGREES WITH ALL 3 TIES. ACCEPTED THE HARRISON AS THE CORNER LOCATION. SET 1 NEW TIE AND MEASURED TO THE EXISTING TIES.



LOCATION

(INDICATE CORNER BY "X")

SEAL:



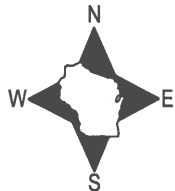
DATA SHOWN HERE ON THIS TIE SHEET IS CORRECT AND COMPLETE TO THE BEST OF MY KNOWLEDGE AND BELIEF.

PROFESSIONAL LAND SURVEYOR

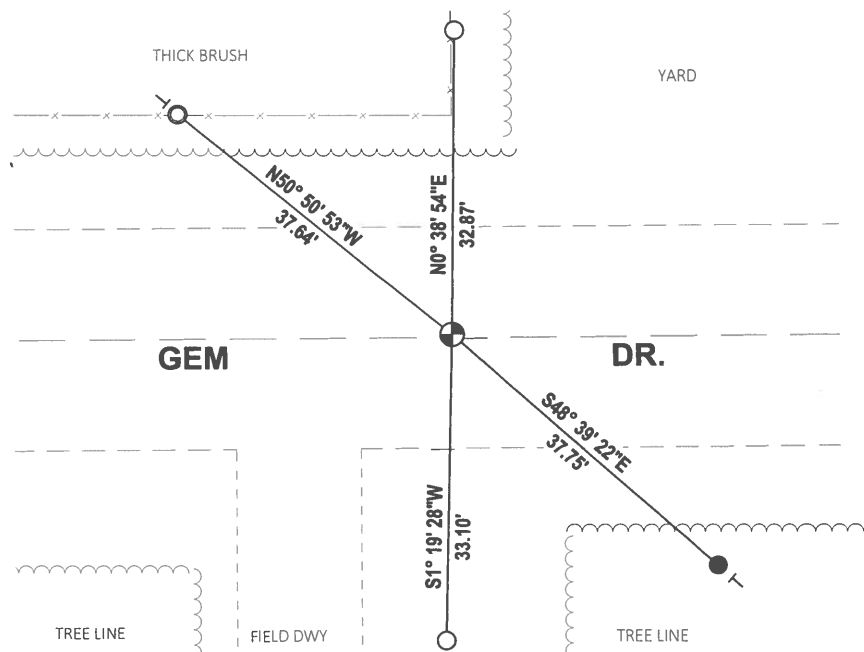
DATE 1/18/2021

- TIE SKETCH

NOTE: CORNER LANDS 0.5'± NORTH OF CENTERLINE OF GEM DR.



- SET 3/4" x 18" IRON REBAR, 1.50#/FT
- FOUND 3/4" IRON ROD
- FOUND 1-1/4" O.D. IRON PIPE
- ⊕ FOUND HARRISON MONUMENT
- VINYL "T" POST



ADAMS COUNTY

Survey Monument Record

TYPE OF MONUMENT: 18" HARRISON

STATE PLANE COORDINATES: N _____

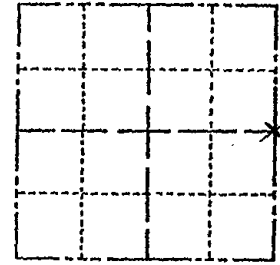
E _____

ELEVATION — M.S.L. DATUM: _____

THETA ANGLE: _____

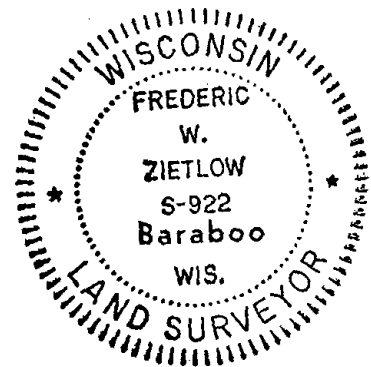
FIELD BOOK: _____ PAGE _____

CORNER NO. 735
SECTION 8
TOWN 14N
RANGE 6E



LOCATION
(Indicated by 'X')

SEAL:



BASIS FOR MONUMENT LOCATION

(Use reverse side if necessary)

Show info such as: History of corner, with reference to Vol. and pg, dates, surveyor; exact description of monument replaced; if location computed, by taped or EDM traverse; landowner remarks, etc.

EXCAVATED AND FOUND 8" SQUARE STONE MONUMENTED SAME. CHECKED CO. SURVEY RECORDS FOR RESURVEYS & NONE WERE ON FILE. FIT TAPED-TRANSIT TRAVERSE OF SECTION GOOD. STONE IS UNDER HARRISON

CORNER O.K. 3-31-76 GR-SS

CORNER O.K. 10-18-81 SK-DW

" " 2-6-86 GR-SS

ALL OK 11-1-90 JG-SS

(SEE ATTACHED SHEET R. MICHAELS 10-14-93)

OK 4-24-96 JG-SS

1 NEW TIE - MON OK 3-9-01 JG-SS

CERTIFIED CORRECT:

Frederic W. Zietlow

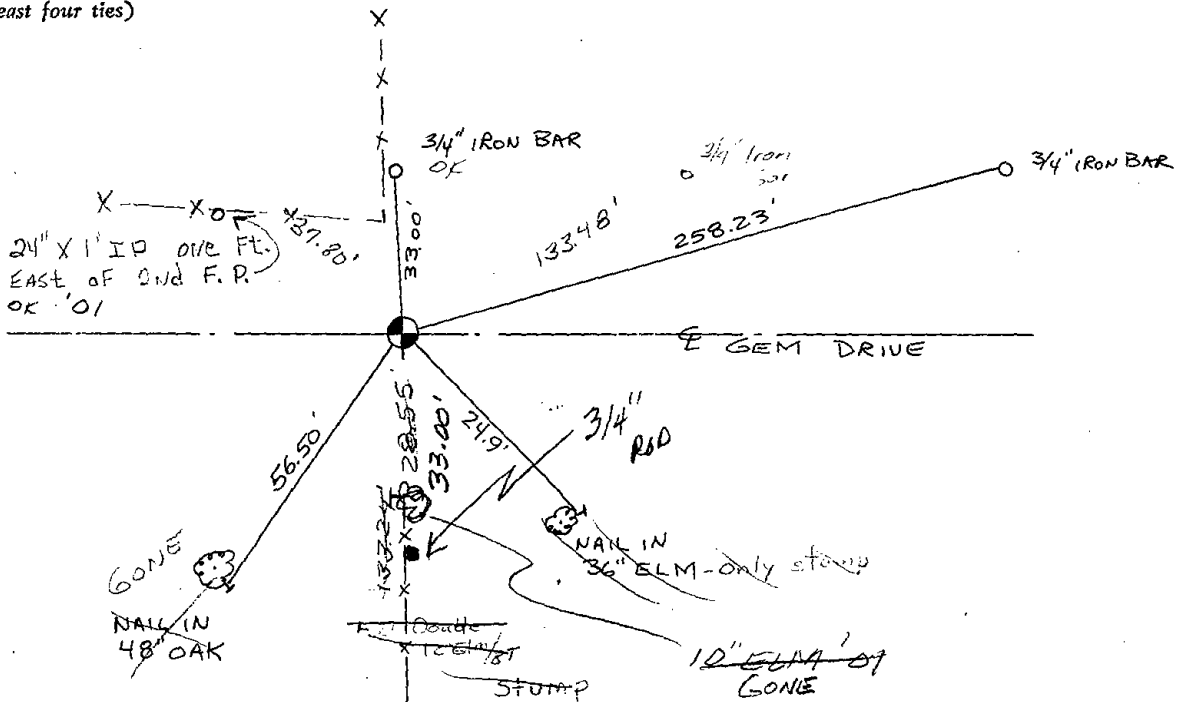
Registered Land Surveyor

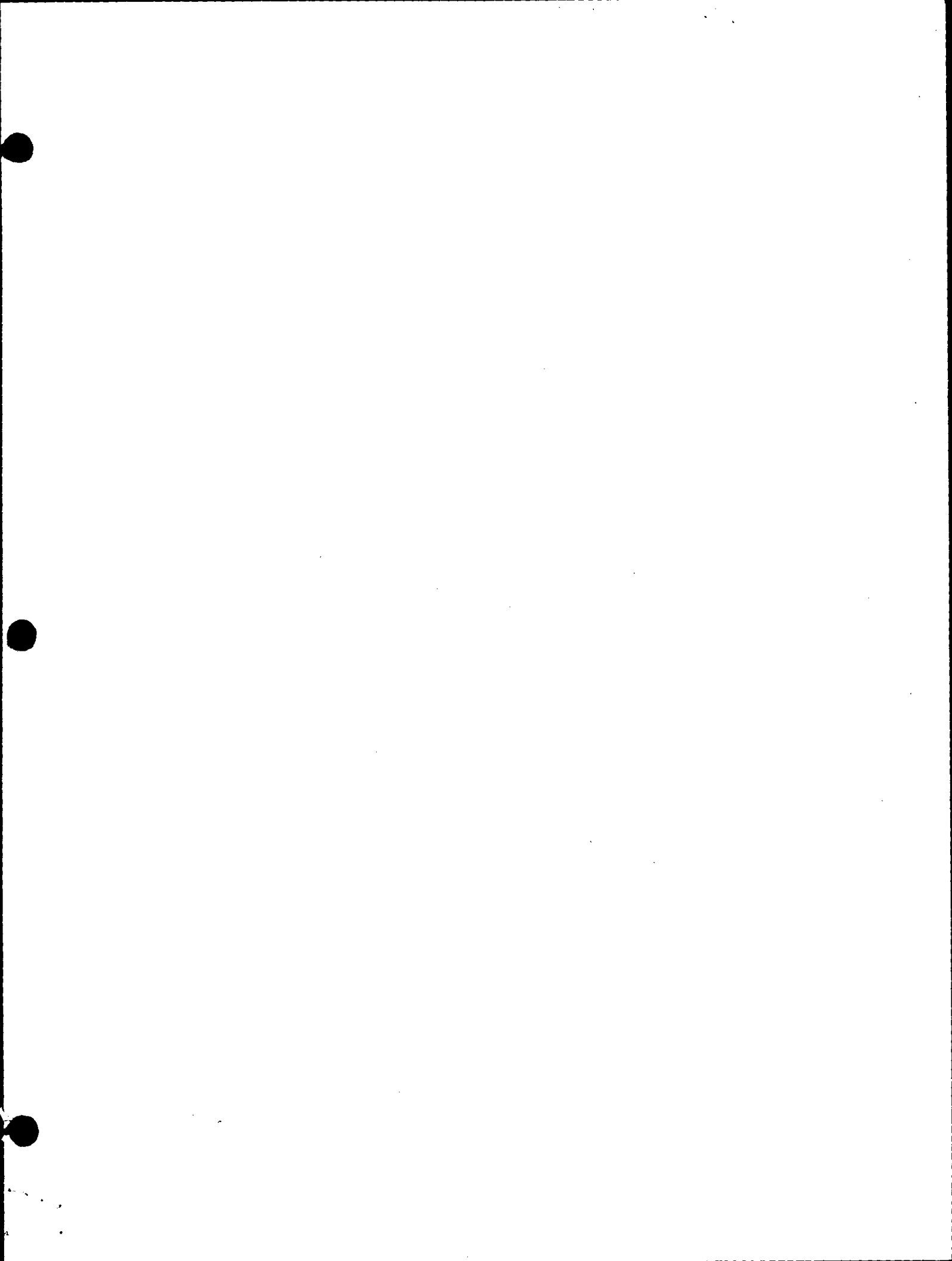
DATE: JULY 31, 1975

TIE SKETCH 1-GONE, 1-NEW, 11-14-06 - JG

OK 12-19-11 MS

(Show at least four ties)





ADAMS COUNTY

Survey Monument Record

TYPE OF MONUMENT: 18" HARRISON

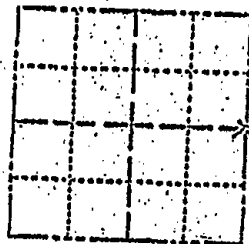
STATE PLANE COORDINATES: N _____

ELEVATION — M.S.L. DATUM: _____

THETA ANGLE: _____

FIELD BOOK: _____ PAGE _____

CORNER NO. 735
SECTION 8
TOWN 14N
RANGE 6E



LOCATION (Indicated by 'X')

BASIS FOR MONUMENT LOCATION

(Use reverse side if necessary)

Show info such as: History of corner, with reference to Vol. and pg. dates, surveyor; exact description of monument replaced; if location computed, by taped or EDM traverse; landowner remarks, etc.

EXCAVATED AND FOUND 8" SQUARE STONE MONUMENTED SAME. CHECKED CO. SURVEY RECORDS FOR RESURVEYS & NONE WERE ON FILE. FIT TAPED-TRANSIT TRAVERSE OF SECTION GOOD.



CERTIFIED CORRECT:

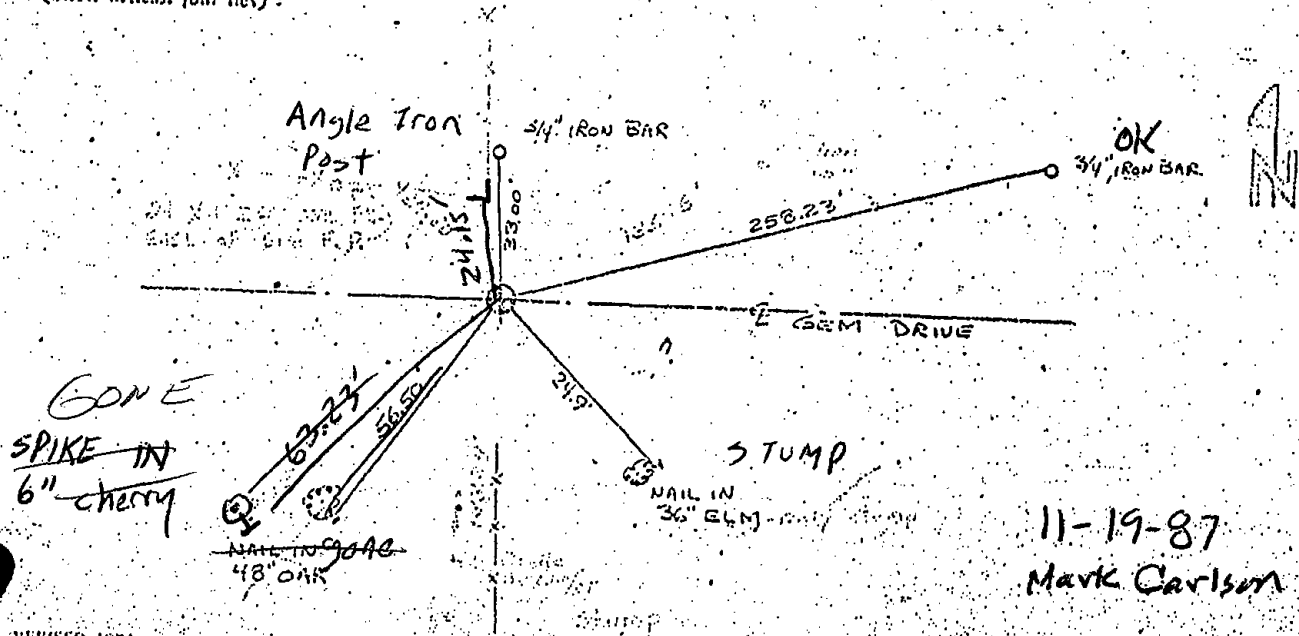
Frederic W. Zietlow

Registered Land Surveyor

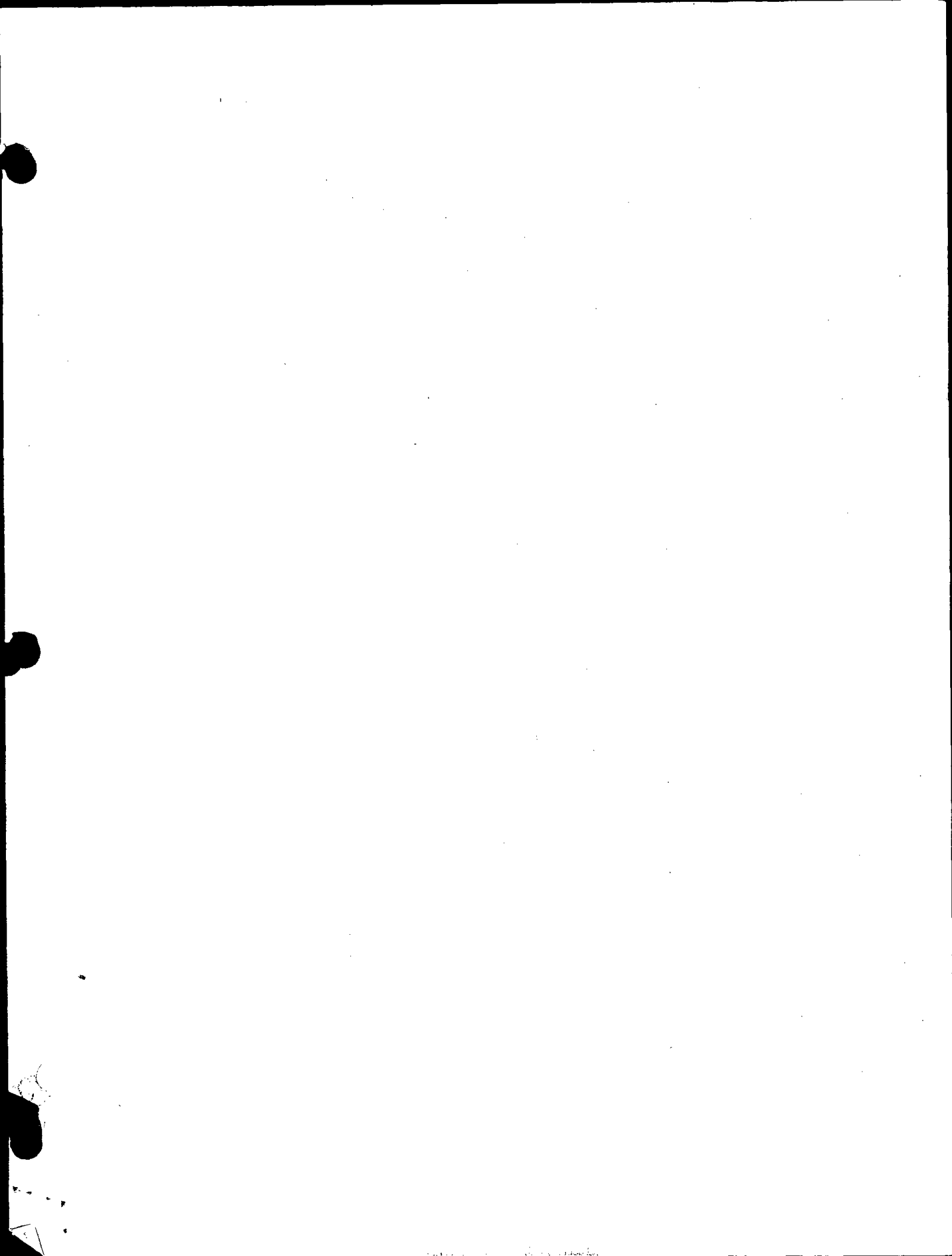
DATE: JULY 31, 1975

THE SKETCH

(Show at least four lines)



11-19-87
Mark Carlson



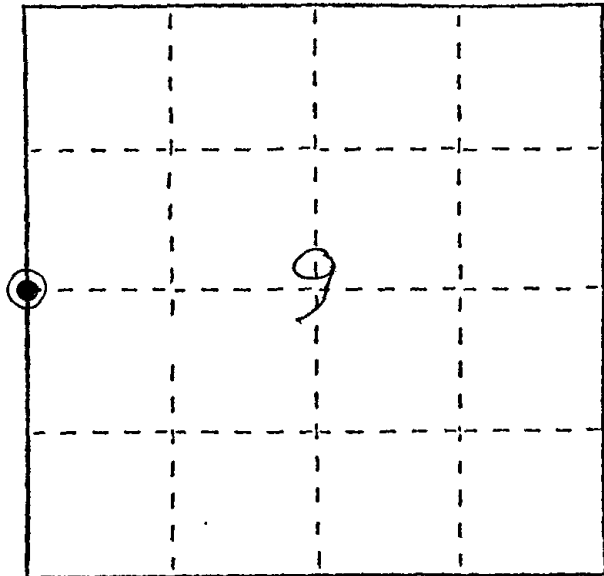
U. S. PUBLIC LAND SURVEY MONUMENT RECORD

INSTRUCTIONS: This record shall show the location of the corner and shall include all of the following nine elements (a through i).

(a) Identify the corner by reference to the U.S. public land survey system.

⊙ = Corner monument restored.

West 1/4 corner of Section 9, T14N, R6E,
Dell Prairie, Adams County, Wisconsin.

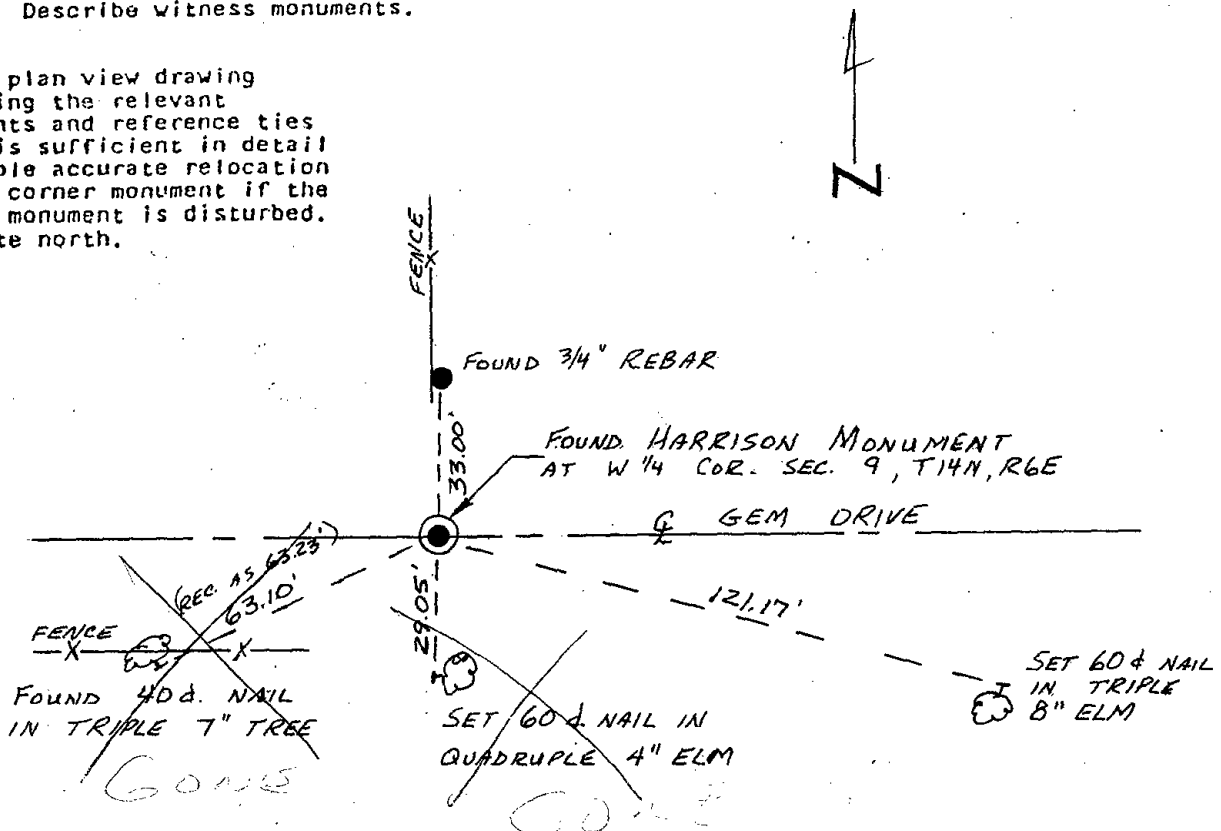


(b) Describe any record evidence, monument evidence, occupational evidence, testimonial evidence or any other material evidence you considered, and whether the monument was found or placed.

On July 13, 1993 the Harrison monument at this corner and one of the tie points from the previous Survey Monument Record from July 31, 1975 by Frederic W. Zietlow were found. In addition, another tie point set by Mark Carlson on the November 19, 1987 update of the Survey Monument Record mentioned above, was found. Additional tie points were set as shown below.

(c) In the plan view drawing below, provide reference ties to at least 4 witness monuments, or, if the location is within a municipality, to at least 2 witness monuments. (Witness monuments shall be made of concrete, natural stone, iron or other equally durable material.) Describe witness monuments.

(d) Show a plan view drawing depicting the relevant monuments and reference ties which is sufficient in detail to enable accurate relocation of the corner monument if the corner monument is disturbed. Indicate north.



(e) Describe any material discrepancy between the location of the corner as restored or reestablished and the location of that corner as previously restored or reestablished by distance and direction. Show the discrepancy on the plan view drawing under (d), above. Show the distances between the corner as previously restored or reestablished and (1) the corner as restored or reestablished, and (2) to at least 2 of the witness monuments shown on the drawing in (d), above.

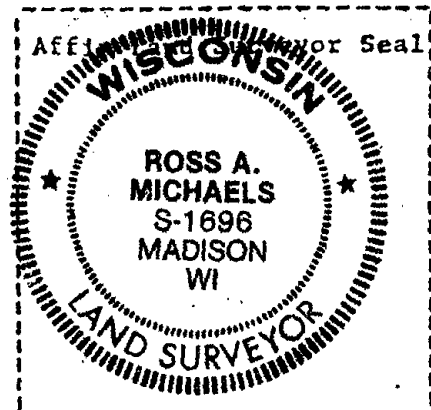
No known discrepancies.

(f) Was the corner restored through acceptance of (1) an obliterated evidence location, or, (2) a found perpetuated location?

A found perpetuated location.

(g&h) Was the corner reestablished through lost corner proportionate methods? If so, show the method, including the directions and distances to other public land survey corners used as evidence or used for proportioning in determining the corner location?

Not a lost corner.



(1) I, Ross A. Michaels
(type or print name) certify that the corner location shown on this record was determined by me or under my direction and control and that this U.S. Public Land Survey Monument Record is correct and complete to the best of my knowledge and belief.

Ross A. Michaels
Signature

10-14-1993
Date