

12 SECTION 14 TOWN 06 RANGE

ADAMS COUNTY

COUNTY CORNER NO: 40
ROMPORTOL ID: 41406122000

PUBLIC LAND SURVEY MONUMENT RECORD

TYPE OF MONUMENT: HARRISON
ADAMS COUNTY COORDINATES, NAD 83 (2007)

N. 124600.138
E. 557617.470

ELEVATION- DATUM

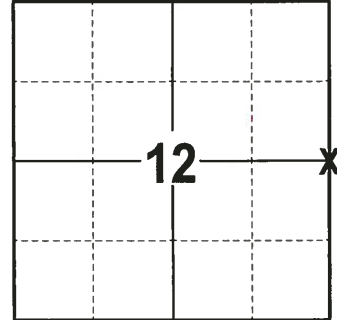
FIELD WORK DATE: 09/14/2017

BASIS FOR MONUMENT LOCATION

1980 - PLS 878 EXCAVATED WITH A BACKHOE AND FOUND A 9"X9"X18" GRANITE STONE WITH A ROTTED STAKE ALONG THE WEST SIDE. STONE FITS CALL TO BEARING TREE REMNANTS. STONE CALLED FOR BY BARRETT PER 1895 FIELD NOTES, VOL. 2, PAGE 202. SET A HARRISON MONUMENT AT THE CORNER LOCATION AND TIED OUT.

1999 - PLS 1397 EXISTING MONUMENT WAS FOUND AT THE CORNER LOCATION. MONUMENT WAS REMOVED AND RAISED DUE TO RECONSTRUCTION OF C.T.H. B. CORNER WAS RE-TIED.

2017 - PLS 2994 FOUND A HARRISON MONUMENT 6" BELOW THE ROAD SURFACE AND 1 WITNESS TREE. THE MONUMENT AGREES WITH THE EXISTING WITNESS TREE. ACCEPTED THE HARRISON MONUMENT AS THE CORNER LOCATION. SET 4 NEW TIES AND MEASURED TO THE TIES AND WITNESS TREE.



LOCATION
(INDICATE CORNER BY "X")

SEAL:



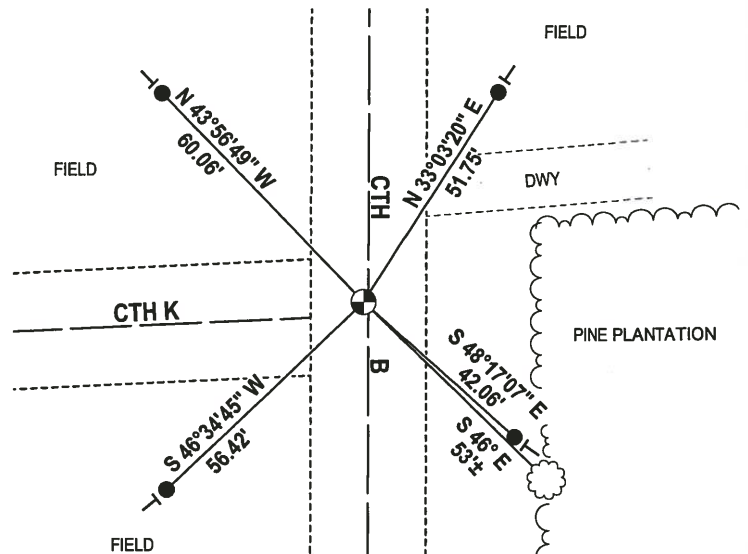
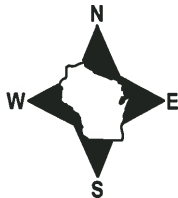
DATA SHOWN HERE ON THIS TIE SHEET IS CORRECT AND COMPLETE TO THE BEST OF MY KNOWLEDGE AND BELIEF.

PROFESSIONAL LAND SURVEYOR

DATE 11-15-17

- TIE SKETCH -

NOTE: THE CORNER FALLS 1 1/2 WEST OF THE CENTERLINE OF CTH B.



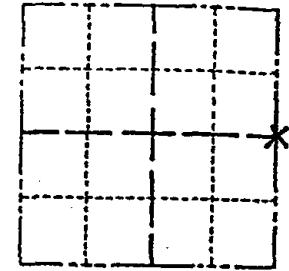
- 3/4" x 18" IRON REBAR SET, 1.50#/FT
- ⊙ HARRISON FOUND
- ┆ VINYL "T" POST
- ☼ WITNESS TREE FOUND

ADAMS COUNTY

Survey Monument Record

TYPE OF MONUMENT: 30" HARRISON MARKER
STATE PLANE COORDINATES: N _____
E _____
ELEVATION — M.S.L. DATUM: _____
THETA ANGLE: _____
FIELD BOOK: _____ PAGE _____

CORNER NO. 40
SECTION 12
TOWN 14N
RANGE 6E



BASIS FOR MONUMENT LOCATION

(Use reverse side if necessary)

Show info such as: History of corner, with reference to Vol. and pg, dates, surveyor; exact description of monument replaced; if location computed, by taped or EDM traverse; landowner remarks, etc.

LOCATION
(Indicated by 'X')

SEAL:

Existing Monument was found in place. Monument was removed and raised due to reconstruction of C.T.H. "B". All tie measurements are horizontal measurements unless noted otherwise.



ALL OK 2-5-01 MH-28

2-GONE, 2-NEW 1-18-06 - JG
1-NEW 12-19-11 MS

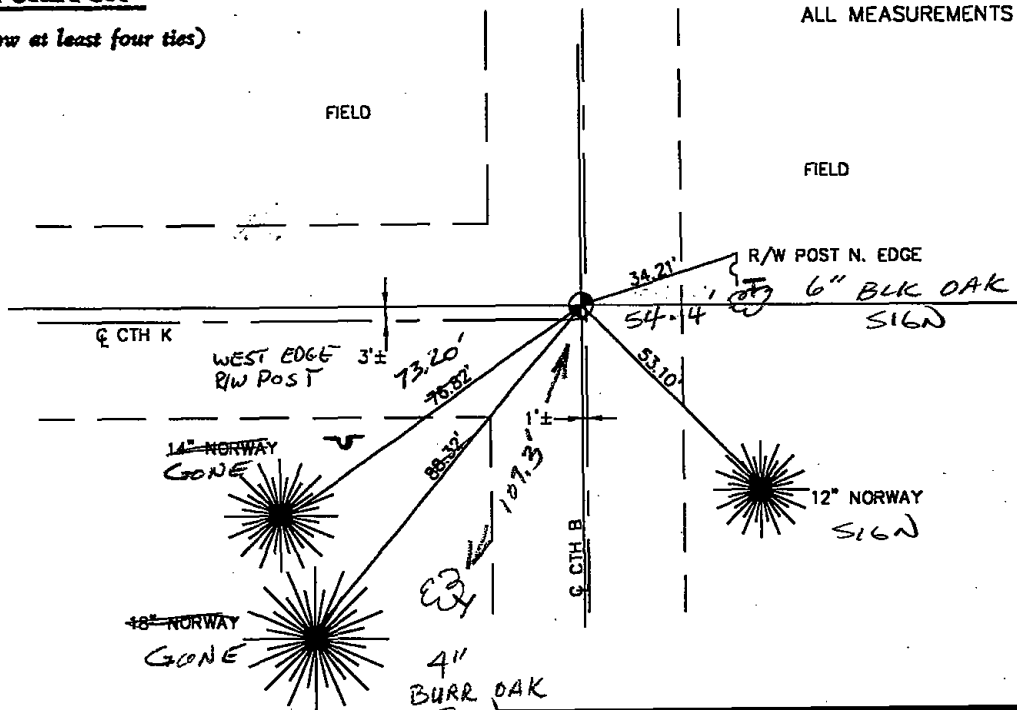
CERTIFIED CORRECT:

Dennis J. Russell
Registered Land Surveyor
DATE: July 26, 1999

TIE SKETCH

(Show at least four ties)

ALL MEASUREMENTS ARE HORIZONTAL.



Government Land Corner Certificate

Adams County

TYPE OF MONUMENT: Harrison

STATE PLANE COORDINATES: N _____
E _____

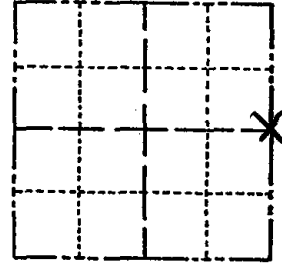
ELEVATION — M.S.L. DATUM: _____

THETA ANGLE: _____

FIELD BOOK: 102 PAGE 76

DRAWN BY: N.T.

CORNER NO. 90
SECTION 12
TOWN 14
RANGE 6



LOCATION
(Indicated by 'X')

BASIS FOR MONUMENT LOCATION

Show info such as: History of corner, with reference to Vol. and pg., dates, surveyor; exact description of monument replaced; if location computed, by taped or EDM traverse; landowner remarks, etc. (Use reverse side if necessary)

Excavated with backhoe. Found 9x9x18" pointed granite stone with rotted stake along the west side. Stone fits call to bearing tree, remnants of which still exist. Stone called for by Barrett per 1895 field notes, Vol 2, page 202.

COENER O.K. 12-22-81 SK-DW

ALL OK 11-1-90 JG-SS

1- GONE, 2- NEW TIES, COL OK, 12/6/95 JG-SS

SEAL:



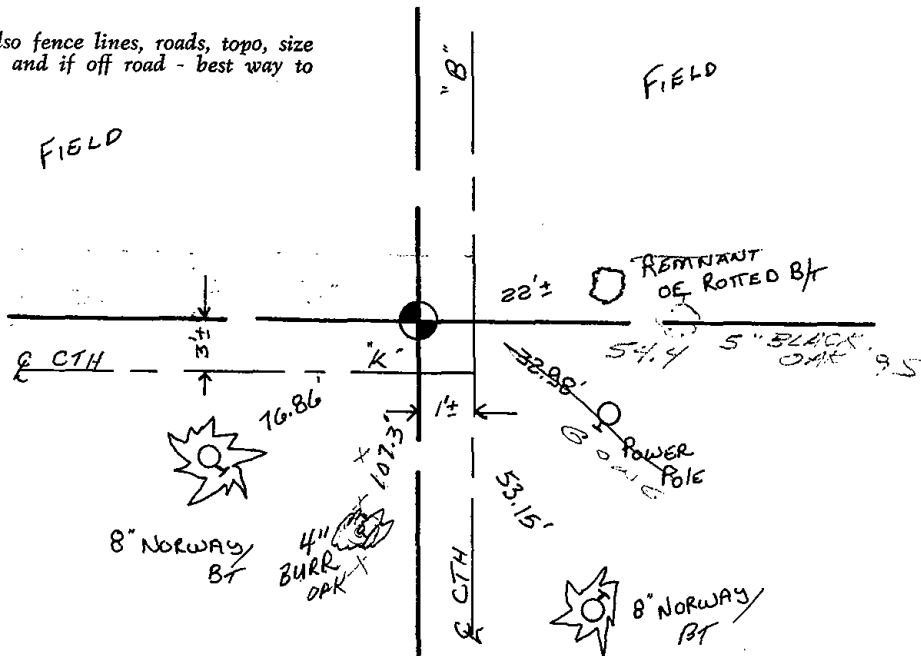
DATA SHOWN HERE ON
CERTIFIED CORRECT:

Anthony B. Kiedrowski
Registered Land Surveyor

DATE: 5/7/80

TIE SKETCH

Show at least four ties, also fence lines, roads, topo, size and type of witness trees and if off road - best way to arrive at corner.

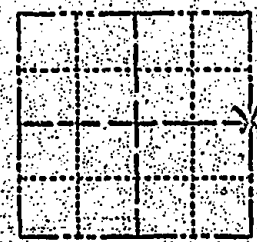


5

Government Land Corner Certificate

Adams County
 TYPE OF MONUMENT: Harrison
 STATE PLANE COORDINATES: N _____
 E _____
 ELEVATION — M.S.L. DATUM: _____
 THETA ANGLE: _____
 FIELD BOOK: 162 PAGE 76
 DRAWN BY: N.J.

CORNER NO. 40
 SECTION 12
 TOWN 14
 RANGE 6



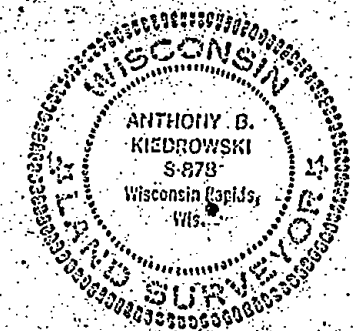
LOCATION
(Indicated by 'X')

BASIS FOR MONUMENT LOCATION

Show info such as: History of corner, with reference to Vol. and pg., dates, surveyor; exact description of monument replaced; if location computed, by taped or EDM traverse; landowner remarks, etc. (Use reverse side if necessary)

Excavated with backhoe. Found 9x9x18" pointed granite stone with rotted stake along the west side. Stone fits call to bearing tree, remnants of which still exist. Stone called for by Barrett per 1895 field notes, Vol 2, page 202.

SEAL:



DATA SHOWN HERE ON
CERTIFIED CORRECT:

Anthony B. Kiedrowski
Registered Land Surveyor

DATE: 5/7/80

NEW TIE Sep 12 '96 Steve Hly
 May 27 '86 Ken Carlson

TIE SKETCH

Show at least four ties, also fence lines, roads, topo, size and type of witness trees and if off road - best way to arrive at corner.

