

## PUBLIC LAND SURVEY MONUMENT RECORD

TYPE OF MONUMENT: HARRISON  
 ADAMS COUNTY COORDINATES, NAD 83 (2007)

N. 121234.940

E. 539126.186

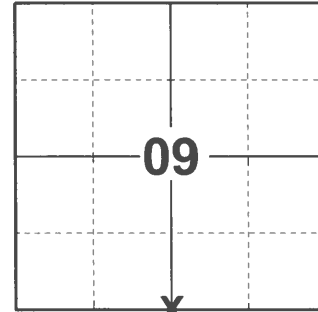
ELEVATION- - - - - DATUM - - - - -

FIELD WORK DATE: 12/21/2020

### BASIS FOR MONUMENT LOCATION

1976 - PLS 922 CHECKED ADAMS COUNTY SURVEY RECORDS FOR RESURVEYS AND NONE WERE ON FILE. USED FENCE CORNER AS 1/4 CORNER FROM TESTIMONY OF TOWN BOARD CHAIRMAN HAROLD WALKER. BEST AVAILABLE EVIDENCE FIT EDM TRAVERSE OF NORTH LINE OF SECTION GOOD.

2020 - PLS 2675 FOUND HARRISON FLUSH WITH THE GROUND AND 1 WITNESS TREE. ACCEPTED THE HARRISON AS THE CORNER LOCATION. SET 4 NEW TIES AND MEASURED TO THE WITNESS TREE.



**LOCATION**  
 (INDICATE CORNER BY "X")

SEAL:

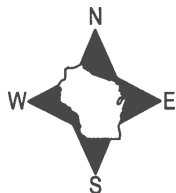


DATA SHOWN HERE ON THIS TIE SHEET IS CORRECT AND COMPLETE TO THE BEST OF MY KNOWLEDGE AND BELIEF.

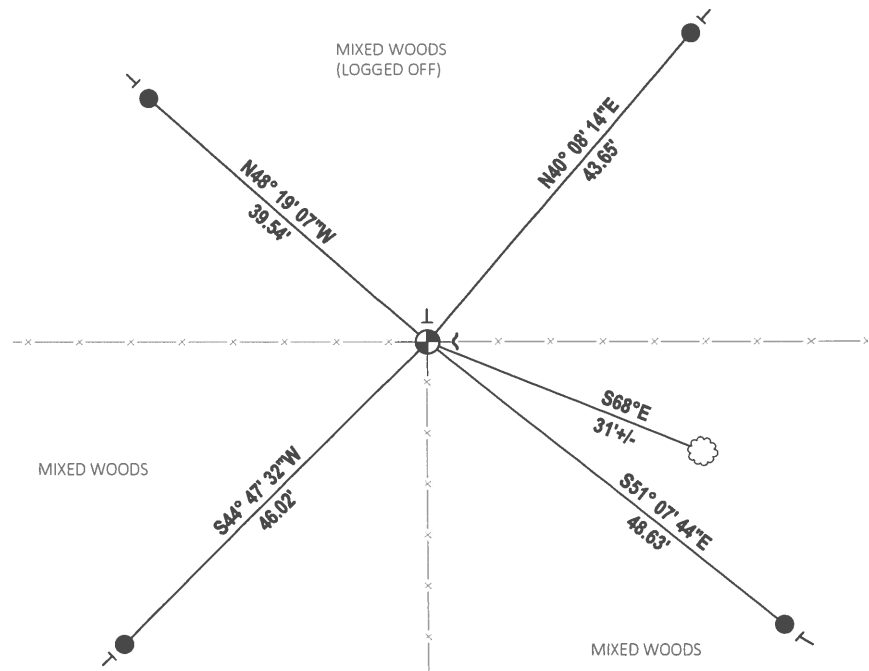
PROFESSIONAL LAND SURVEYOR

DATE 1/18/2021

### -TIE SKETCH



- SET 3/4" x 18" IRON REBAR, 1.50#/FT
- ⊕ FOUND HARRISON MONUMENT
- ~ STEEL FENCE POST
- ┌ VINYL "T" POST
- ⊗ WITNESS TREE



# ADAMS COUNTY

## Survey Monument Record

TYPE OF MONUMENT: HARRISON MONUMENT-QUARTER COR.

STATE PLANE COORDINATES: N \_\_\_\_\_

E \_\_\_\_\_

ELEVATION — M.S.L. DATUM: \_\_\_\_\_

THETA ANGLE: \_\_\_\_\_

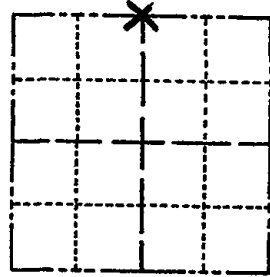
FIELD BOOK: \_\_\_\_\_ PAGE \_\_\_\_\_

CORNER NO. 988 <sup>46</sup>

SECTION 16

TOWN 14 N

RANGE 6 E



LOCATION  
(Indicated by 'X')

### BASIS FOR MONUMENT LOCATION

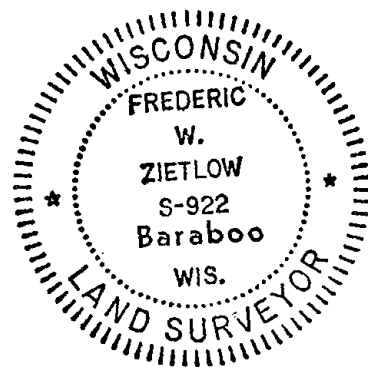
(Use reverse side if necessary)

Show info such as: History of corner, with reference to Vol. and pg, dates, surveyor; exact description of monument replaced; if location computed, by taped or EDM traverse; landowner remarks, etc.

CHECKED ADAMS COUNTY SURVEY RECORDS FOR RESURVEYS AND NONE WERE ON FILE. USED FENCE CORNER AS 1/4 CORNER FROM TESTIMONY OF TOWN BOARD CHAIRMAN HAROLD WALKER. BEST AVAILABLE EVIDENCE FIT EDM TRAVERSE OF N. LINE OF SECTION GOOD.

CORNER O.K 12-18-81 SK-DW

- 1 NEW TIE 7-15-91 JG-SS
- 3 NEW TIES 4-25-96 JG-SS
- OK 10-10-01 SS
- OK, 11-13-06-36



CERTIFIED CORRECT:

*Frederic W. Zietlow*

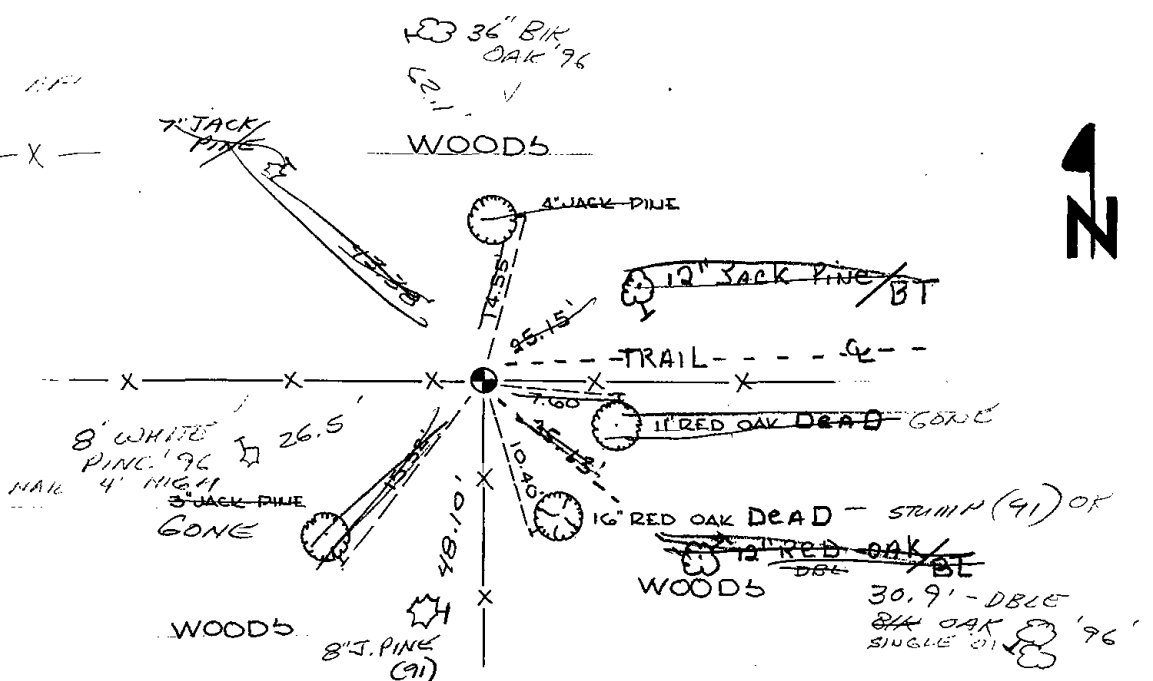
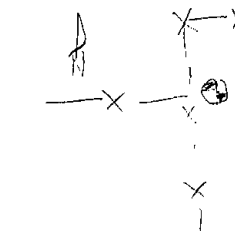
Registered Land Surveyor

DATE: JUNE 8, 1976

### TIE SKETCH

(Show at least four ties)

FENCE E-W LINE ± 2' OFFSET



ALL TREES ARE BLAZED WITH PK NAILS & SHINERS

