

U.S. PUBLIC LAND SURVEY MONUMENT RECORD

ADAMS COUNTY



Land Surveying
Landscape Architecture
Engineering
Jordan G. Brost, PLS #3009
4941 Kirschling Court
Stevens Point, WI 54481
715.344.9999 (Ph) 715.344.9922 (Fax)

Point of Beginning

This record shall show the location of the corner and shall include all of the following nine elements (a through i)

TYPE OF MONUMENT: BERNTSEN SURVEY MARKER NAIL

ADAMS COUNTY COORDINATES: N: 213611.521

E: 546868.448

ELEVATION: -M.S.L. DATUM _____

ELLIP. HEIGHT: _____

LATITUDE: _____

LONGITUDE: _____

- FOUND
- SET
- RE-SET
- RE-TIED

ORDER OF ACCURACY:

- FIRST _____
- SECOND _____
- THIRD X
- FOURTH _____
- UNKNOWN _____
- OTHER _____

REFERENCE DATUM: NAD 83 (2011)

(a) Identify the corner by reference to the U.S. public land survey system.

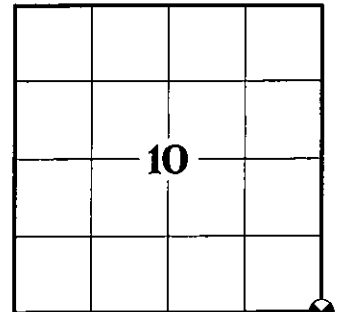
CORNER NO. 49

ROMPORTOL ID: 4170610000

SECTION 10

TOWNSHIP 17 NORTH

RANGE 06 EAST



SECTION IDENTIFICATION

(b) Describe any record evidence, monument evidence, occupational evidence, testimonial evidence, or any other material evidence considered by the professional land surveyor, and whether the monument was found or placed

DALE C. HAGEN, PLS 1103 SET HARRISON MONUMENT. RETRACED SURVEY OF SECTION 11 (IE. SECTION TO NORTH) BY RAY C. CARLSON, S-297, AND RE-ESTABLISHED NORTHWEST CORNER OF SECTION 14. PER PREVIOUS TIE SHEET DATED AUGUST 19, 1974.

TIMOTHY G. RUTZEN, JR, PLS 2994 FOUND A HARRISON MONUMENT 4" BELOW THE ROAD SURFACE, 1 TIE AND 1 PROPERTY IRON. THE MONUMENT AGREES WITH THE EXISTING TIE. ACCEPTED THE HARRISON MONUMENT AS THE CORNER LOCATION. SET 2 NEW TIES AND MEASURED TO THE TIES AND PROPERTY IRON. PER PREVIOUS TIE SHEET DATED AUGUST 30, 2018.

ON AUGUST 27, 2021, I FOUND A HARRISON MONUMENT AT THE CORNER LOCATION AND THREE EXISTING WITNESS MONUMENTS AS SHOWN ON PREVIOUS TIE SHEET DATED AUGUST 30, 2018. EXISTING MONUMENT CHECKED WELL WITH WITNESS MONUMENTS AND WAS ACCEPTED AS THE CORNER LOCATION. MONUMENT AND WITNESSES WERE TIED BEFORE RECONSTRUCTION OF COUNTY HWY "M".

ON NOVEMBER 3, 2021, AFTER CONSTRUCTION WAS COMPLETE, I SET A BERNTSEN SURVEY NAIL IN ASPHALT AT THE PREVIOUS SURVEYED LOCATION AND VERIFIED THREE WITNESS MONUMENTS AS PREVIOUSLY FOUND, WHICH WERE IN GOOD CONDITION AND FOUND AN EXISTING 3/4" IRON BAR SOUTH OF SECTION CORNER AND USED AS WITNESS MONUMENT AS SHOWN IN THE BELOW SKETCH.

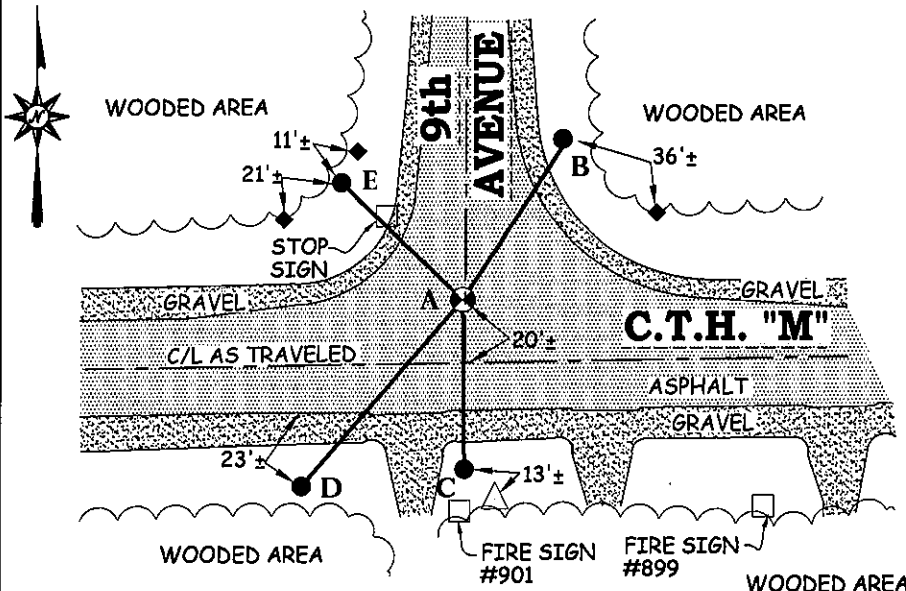
(c) In the plan view drawing below, provide reference ties to at least 4 witness monuments. Witness monuments shall be concrete, natural stone, iron, bearing trees or other equally durable material, except wood other than bearing trees.

(d) Show a plan view drawing depicting the relevant monuments and reference ties which is sufficient in detail to enable accurate relocation of the corner monument if the corner monument is disturbed.

DRAFTED BY JORDAN G. BROST
DRAWN BY TRAVIS PLANTICO

TIE SKETCH:

(SCALE: 1"=60')



LEGEND AND NOTES:

- SET BERNTSEN SURVEY MARKER NAIL
- 3/4" IRON BAR FOUND
- TELEPHONE PEDESTAL
- PLASTIC R/W POST

A-B	N 33°01'57"E	59.94'
	(S 00°30'03" E)	(53.21')
A-C	S 00°33'11"E	53.16'
	(S 40°44'06" W)	(77.21')
A-D	S 40°42'19"W	77.12'
	(N 45°53'28" W)	(52.75')
A-E	N 45°49'38"W	52.81'

COORDINATES ARE REFERENCED TO THE ADAMS COUNTY COORDINATE SYSTEM AS DEVELOPED BY THE WISCONSIN DEPARTMENT OF TRANSPORTATION.

U.S. PUBLIC LAND SURVEY MONUMENT RECORD
ADAMS COUNTY



Land Surveying
Landscape Architecture
Engineering
Jordan G. Brost, PLS #3009
4941 Kirschling Court
Stevens Point, WI 54481
715.344.9999 (Ph) 715.344.9922 (Fax)

(e) A description of any material discrepancy between the location of the corner monument as restored and the monument location of that corner as previously established.

(a) Identify the corner by reference to the U.S. public land survey system.

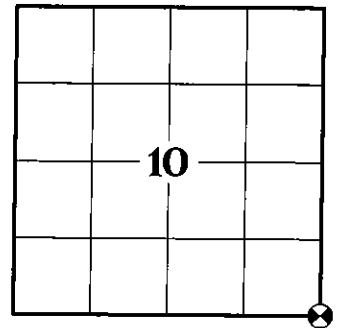
CORNER NO. 49
ROMPORTOL ID: 4170610000
SECTION 10
TOWNSHIP 17 NORTH
RANGE 06 EAST

(f) Was the corner restored through acceptance of (1) an obliterated evidence location, or (2) a found perpetuated location.

FOUND PERPETUATED LOCATION

(g & h) Was the corner reestablished through lost corner proportionate methods? If so, show the method, including the directions and distances to other public land survey corners used as evidence or used for proportioning in determining the corner location.

NO



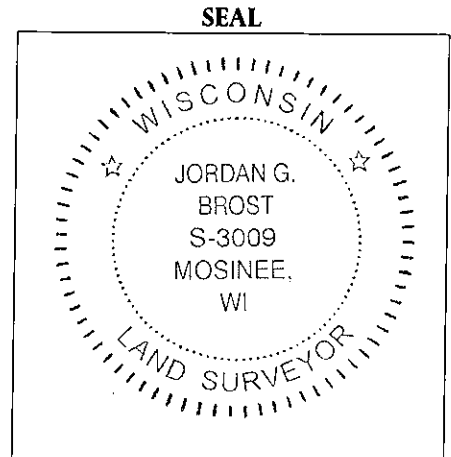
SECTION IDENTIFICATION

(i) I, Jordan G. Brost, hereby certify that the corner location shown on this record was determined by me or under my direction and control and that this U.S. Public Land Survey Monument Record is correct and complete to the best of my knowledge and belief.

Jordan G. Brost, PLS # 3009

Nov. 18, 2021

Date



PUBLIC LAND SURVEY MONUMENT RECORD

TYPE OF MONUMENT: HARRISON
 ADAMS COUNTY COORDINATES, NAD 83 (2007)

N. 121521.581

E. 547038.614

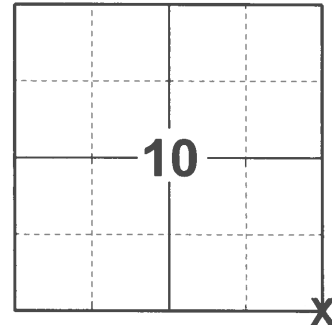
ELEVATION- _____ DATUM _____

FIELD WORK DATE: 12/18/2020

BASIS FOR MONUMENT LOCATION

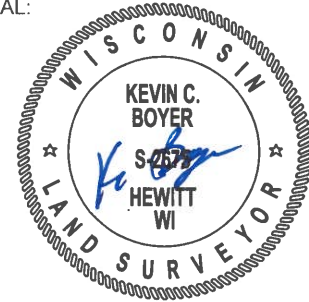
1975 - PLS 922 FOUND 3/4"X14" IRON PIPE BURIED IN ROAD, MONUMENTED SAME. CHECKED COUNTY SURVEY RECORDS FOR RESURVEYS AND NONE WERE ON FILE. FIT EDM TRAVERSE OF SECTION GOOD.

2020 - PLS 2675 FOUND HARRISON 4"± BELOW THE ROAD SURFACE AND 1 WITNESS. THE MONUMENT AGREES WITH THE 1 WITNESS. ACCEPTED THE HARRISON AS THE CORNER LOCATION. SET 4 NEW TIES AND MEASURED TO THE EXISTING WITNESS.



LOCATION
 (INDICATE CORNER BY "X")

SEAL:



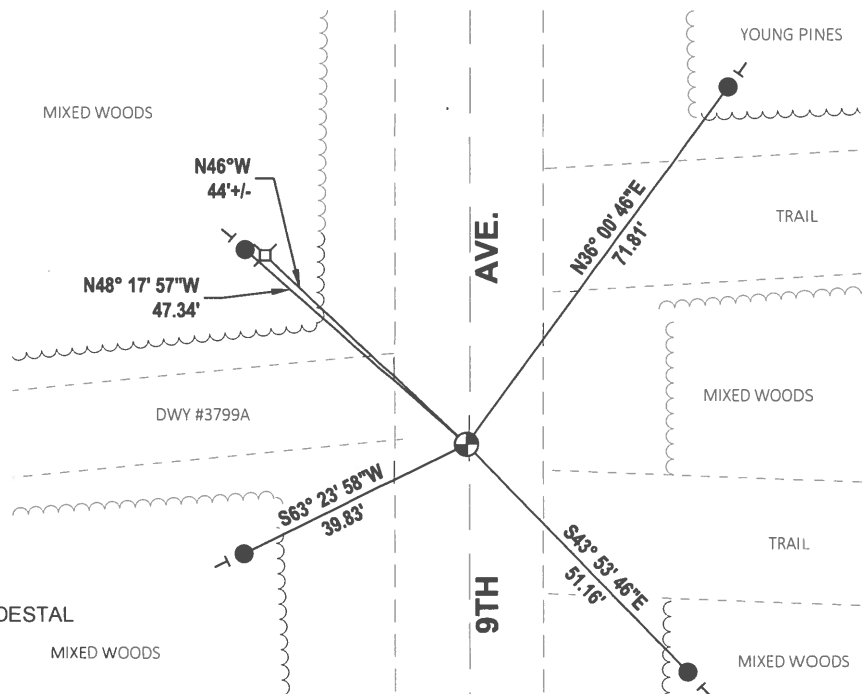
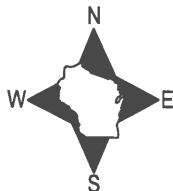
DATA SHOWN HERE ON THIS TIE SHEET IS CORRECT AND COMPLETE TO THE BEST OF MY KNOWLEDGE AND BELIEF.

PROFESSIONAL LAND SURVEYOR

DATE 1/18/2021

TIE SKETCH

NOTE: CORNER LANDS 1'± WEST OF 9TH AVE.



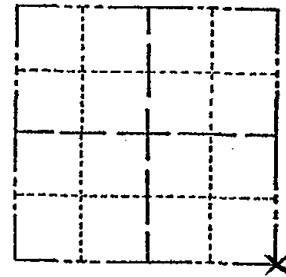
- SET 3/4" x 18" IRON REBAR, 1.50#/FT
- ⊕ FOUND HARRISON MONUMENT
- ⊖ VINYL "T" POST
- ⊗ SOUTHWEST CORNER OF ELECTRIC PEDESTAL

ADAMS COUNTY

Survey Monument Record

TYPE OF MONUMENT: 30" HARRISON
 STATE PLANE COORDINATES: N _____
 E _____
 ELEVATION — M.S.L. DATUM: _____
 THETA ANGLE: _____
 FIELD BOOK: _____ PAGE _____

CORNER NO. 725
 SECTION 10
 TOWN 14N
 RANGE 6E



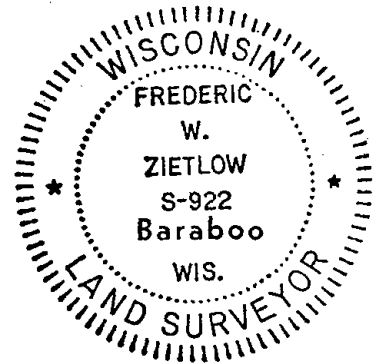
BASIS FOR MONUMENT LOCATION

(Use reverse side if necessary)

Show info such as: History of corner, with reference to Vol. and pg, dates, surveyor; exact description of monument replaced; if location computed, by taped or EDM traverse; landowner remarks, etc.

LOCATION
(Indicated by 'X')

SEAL:



FOUND 3/4" X 14" IRON PIPE BURIED IN ROAD,
 MONUMENTED SAME. CHECKED COUNTY SURVEY
 RECORDS FOR RESURVEYS AND NONE WERE
 ON FILE. FIT EDM TRAVERSE OF SECTION
 GOOD.

CORNER O.K. 11-2-76 RN-SS
 CORNER OK 12-18-81 DW-SK
 " " 2-6-86 GR-SS

ALL OK 11-1-90 JG-SS

1- NEW TIE, 1-GONE COR OK 12/6/95 JG-SS
 2-NEW TIES, 3-20-01 JG
 2-GONE, 1-NEW, 10-24-06-JG-JB
 1-Gone, 1-new 1-17-11 MS,SS

CERTIFIED CORRECT:

Frederic W. Zietlow

Registered Land Surveyor

DATE: JULY 31, 1975

TIE SKETCH

(Show at least four ties)

