

17
SECTION

14
TOWN

06
RANGE

ADAMS COUNTY

COUNTY CORNER NO: 56

ROMPORTOL ID: 41406172000

PUBLIC LAND SURVEY MONUMENT RECORD

TYPE OF MONUMENT: HARRISON (BROKEN-TOP)

ADAMS COUNTY COORDINATES, NAD 83 (2007)

N. 118577.272

E. 536471.900

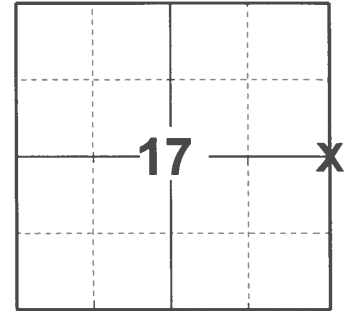
ELEVATION- DATUM

FIELD WORK DATE: 01/04/2021

BASIS FOR MONUMENT LOCATION

1976 - PLS 922 CHECKED ADAMS COUNTY SURVEY RECORDS AND MIS-STATE ASSOCIATE FILES. SURVEYOR VERNIE SCHULTZ DID NUMEROUS SURVEYS WHICH WERE TIED TO THIS CORNER. BACKED OUT THESE SURVEYS & SET THIS CORNER. FIT OCCUPATION WITHIN THE INTERIOR OF THIS SECTION GOOD. EDM TRAVERSE, REFERENCE SURVEYS ADAMS CO CSM #1 & SUNNY DELL SUBDIVISION. SEE SECTION COMPOSITE SHEET FOR OTHER IRON MONUMENTS.

2021 - PLS 2675 FOUND HARRISON (BROKEN-TOP) 16"± BELOW THE FIELD SURFACE AND 1 WITNESS. THE MONUMENT AGREES WITH THE WITNESS. ACCEPTED THE HARRISON (BROKEN-TOP) AS THE CORNER LOCATION. SET 4 NEW TIES AND MEASURED TO THE EXISTING WITNESS.



LOCATION

(INDICATE CORNER BY "X")

SEAL:

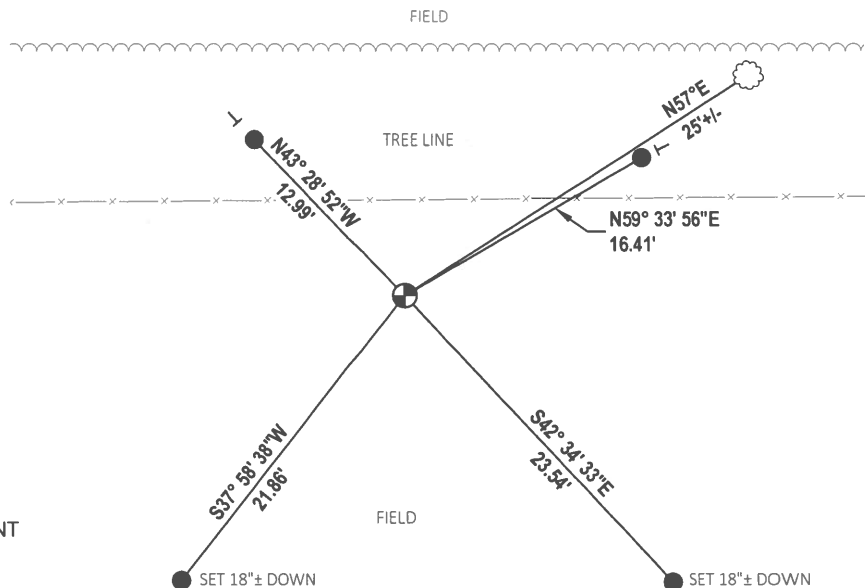
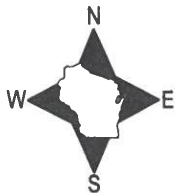


DATA SHOWN HERE ON THIS TIE SHEET IS CORRECT AND COMPLETE TO THE BEST OF MY KNOWLEDGE AND BELIEF.

PROFESSIONAL LAND SURVEYOR

DATE 3/3/2021

TIE SKETCH



- SET 3/4" x 18" IRON REBAR, 1.50#/FT
- ⊕ FOUND HARRISON (BROKEN-TOP) MONUMENT
- ┌ VINYL "T" POST
- ☼ WITNESS TREE

ADAMS COUNTY
Survey Monument Record

CORNER NO. 993
 SECTION 17
 TOWN 14 N
 RANGE 6 E

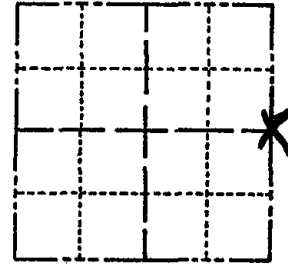
TYPE OF MONUMENT: HARRISON MONUMENT-QUARTER COR.

STATE PLANE COORDINATES: N _____
 E _____

ELEVATION — M.S.L. DATUM: _____

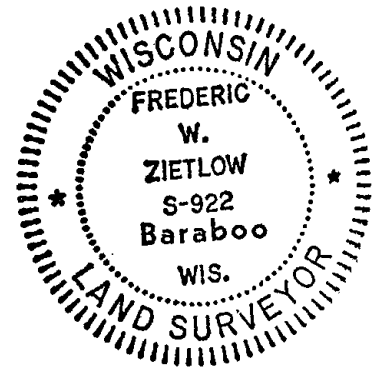
THETA ANGLE: _____

FIELD BOOK: _____ PAGE _____



LOCATION
 (Indicated by 'X')

SEAL:



BASIS FOR MONUMENT LOCATION

(Use reverse side if necessary)

Show info such as: History of corner, with reference to Vol. and pg, dates, surveyor; exact description of monument replaced; if location computed, by taped or EDM traverse; landowner remarks, etc.

Checked Adams County Survey Records and Mid-State Associates files. Surveyor Vernie Schultz did numerous surveys which were tied to this corner. We backed out these surveys & set this corner. Fit occupation within the interior of this section good. EDM traverse. Reference surveys Adams Co. CSM #1 & Sunny Dell Subdivision. See section composite sheet for other iron monuments

CORNER D.K 12-18-81 SK-DW
 " " 2-18-86 GR-SS
 " " 6-20-91 JG

TOP BROKEN OFF, TIES OK 4-24-96 JG-SS

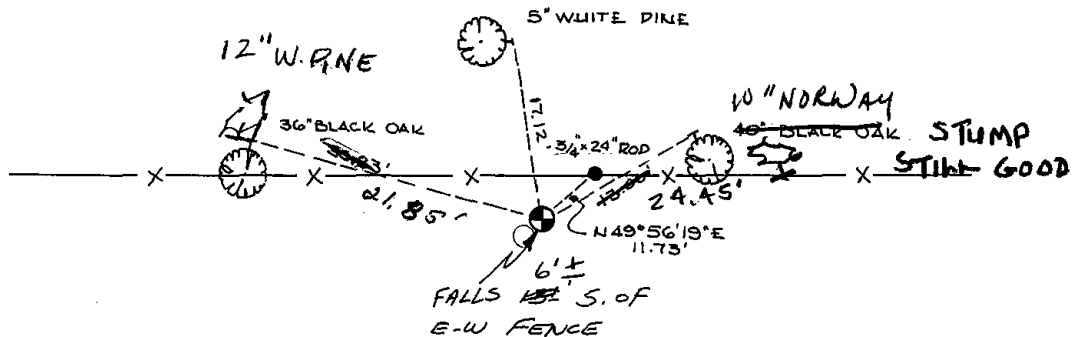
CERTIFIED CORRECT:

Frederic W. Zietlow
 Registered Land Surveyor

DATE: JUNE 8, 1976

TIE SKETCH

ALL OK 3-7-01 MH-SA
 2-CONE, 2-NEW, 11-13-06 - JG-SS
 (Show at least four ties) OK 9-20-11 MS



ALL TREES ARE BLAZED WITH PH NAILS & SHINERS

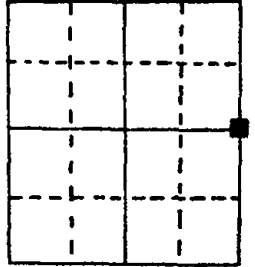
U.S. PUBLIC LAND SURVEY MONUMENT RECORD

Note: This form is intended and designed to fulfill all requirements of Wisconsin Administrative Code, Chapter A-E 5.02, U.S. Public Land Survey Monument Record (3) (a) (b) (c) (d) (e) (f) (g) (h) (i). An additional sheet may be added if necessary to conform with said requirements.

(a) Corner location: Township 14 North
Range 6 East West

Pell Prairie
Town/City/Village

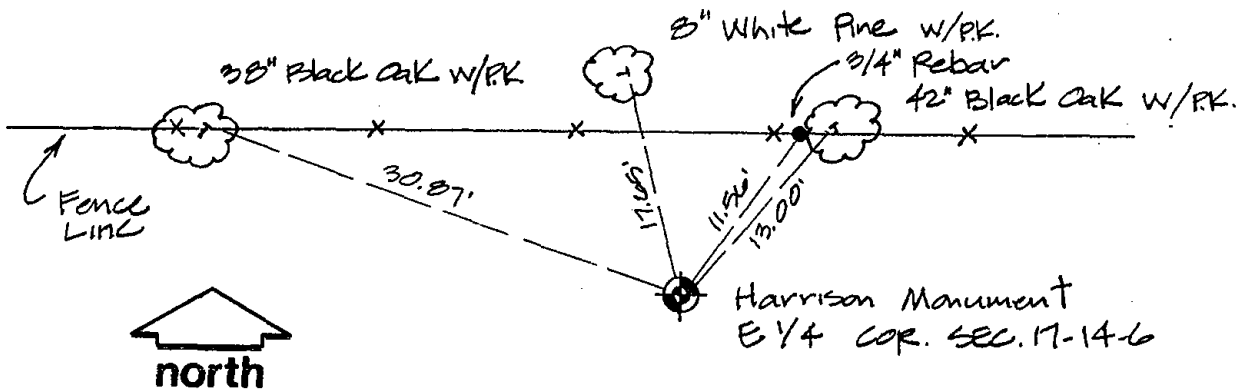
Adams County
County



Section 17

(b) (f) (g) (h) Description of monument found at this corner and if it was accepted, state all evidence (material, testimonial, occupational, plats, records, other monuments) used as a basis for accepting. If not accepted or if nothing was found, state evidence used as basis for establishing location. If reestablished through lost corner proportionate methods, indicate all monuments, distances and directions used to establish.

(c) (d) (e) Plan view of corner with ties to at least 4 witness monuments. If in disagreement with previously established corner, show the distances between the two corners and also indicate the ties to the disputed corner.



(i) I, James D. Prehn, S-1790
(type or print name) certify that the corner location on this record was determined by me or under my direction and control and that this U.S. Public Land Survey Monument Record is correct and complete to the best of my knowledge and belief.

James D. Prehn
Signature
3-18-05
Date

