

18
SECTION

14
TOWN

06
RANGE

ADAMS COUNTY

COUNTY CORNER NO: 63

ROMPORTOL ID: 41406170030A

PUBLIC LAND SURVEY MONUMENT RECORD

TYPE OF MONUMENT: HARRISON (BROKEN-TOP)
ADAMS COUNTY COORDINATES, NAD 83 (2007)

N. 115920.737

E. 533349.686

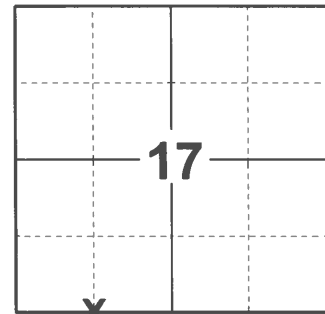
ELEVATION- DATUM

FIELD WORK DATE: 01/04/2021

BASIS FOR MONUMENT LOCATION

1976 - PLS 922 CHECKED ADAMS COUNTY SURVEY RECORDS FOR RESURVEYS AND NONE WERE ON FILE. PROJECTED LINE FROM SE CORNER THRU S1/4 CORNER AND MONUMENTED POINT ON TOP OF BANK. FIT OCCUPATION EXCELLENT. EDM TRAVERSE.

2021 - PLS 2675 FOUND HARRISON (BROKEN-TOP) 6"± BELOW THE GROUND AND 1 WITNESS. THE MONUMENT AGREES WITH THE WITNESS. ACCEPTED THE HARRISON (BROKEN-TOP) AS THE MEANDER CORNER LOCATION. SET 4 NEW TIES AND MEASURED TO THE EXISTING WITNESS.



LOCATION

(INDICATE CORNER BY "X")

SEAL:

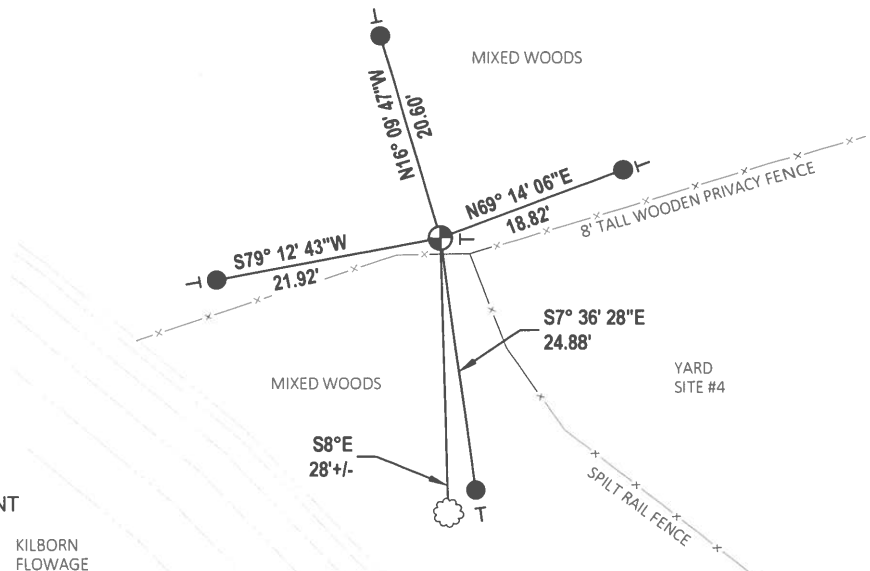
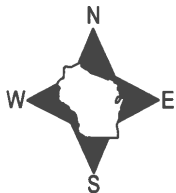


DATA SHOWN HERE ON THIS TIE SHEET IS CORRECT AND COMPLETE TO THE BEST OF MY KNOWLEDGE AND BELIEF.

PROFESSIONAL LAND SURVEYOR

DATE 3/3/2021

- TIE SKETCH



- SET 3/4" x 18" IRON REBAR, 1.50#/FT
- ⊕ FOUND HARRISON (BROKEN-TOP) MONUMENT
- VINYL "T" POST
- ☉ WITNESS TREE

KILBORN
FLOWAGE

ADAMS COUNTY

Survey Monument Record

TYPE OF MONUMENT: MEANDER CORNER, HARRISON SLIMLINE

STATE PLANE COORDINATES: N _____
E _____

ELEVATION — M.S.L. DATUM: _____

THETA ANGLE: _____

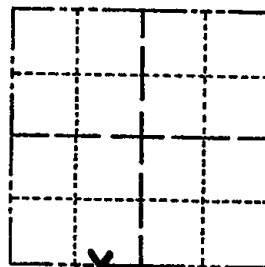
FIELD BOOK: _____ PAGE _____

CORNER NO. 989

SECTION 17

TOWN 14 N

RANGE 6 E



BASIS FOR MONUMENT LOCATION

(Use reverse side if necessary)

Show info such as: History of corner, with reference to Vol. and pg, dates, surveyor; exact description of monument replaced; if location computed, by taped or EDM traverse; landowner remarks, etc.

MEANDER POST #14

LOCATION
(Indicated by 'X')

SEAL:

CHECKED ADAMS COUNTY SURVEY RECORDS FOR RESURVEYS & NONE WERE ON FILE.

PROJECTED LINE FROM SE COR THRU SV4 COR & MONUMENTED POINT ON TOP OF BANK. FIT OCCUPATION EXCELLENT. EDM TRAVERSE.

Ties O.K MON Broke 12-18-81 SK. BW.
" " 2-18-86 GR-SS
" " 6-20-91 JG

1-NEW, TOP BROKEN OFF MON. 4-24-96 JG-SS
ALL OK 3-07-01 JG-MH
ALL OK 11-14-06 - JG
OK 7-5-11 SS



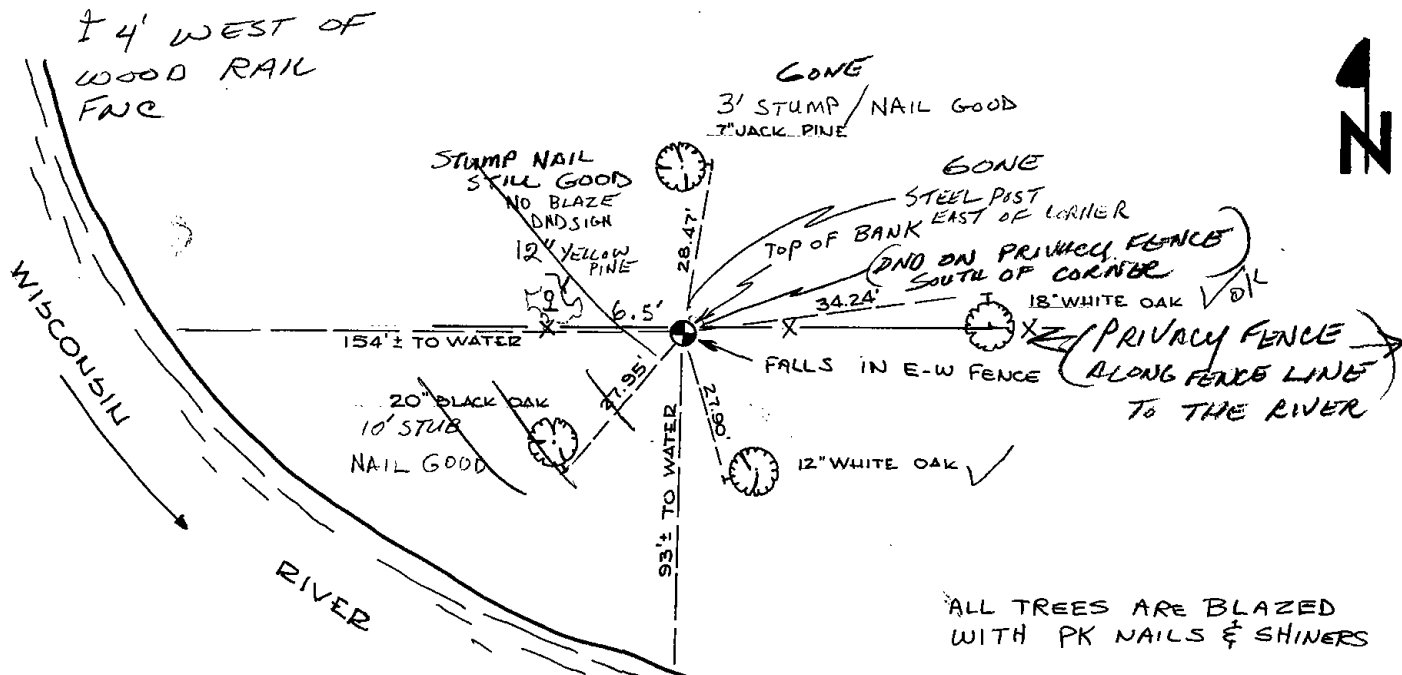
CERTIFIED CORRECT:

Frederic W. Zietlow
Registered Land Surveyor

DATE: JUNE 8, 1976

TIE SKETCH

(Show at least four ties)



ALL TREES ARE BLAZED WITH PK NAILS & SHINERS