

PUBLIC LAND SURVEY MONUMENT RECORD

TYPE OF MONUMENT: HARRISON
 ADAMS COUNTY COORDINATES, NAD 83 (2007)

N. 115961.026

E. 539089.817

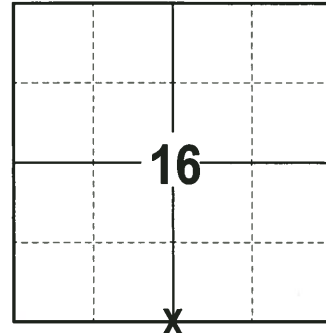
ELEVATION- _____ DATUM _____

FIELD WORK DATE: 06/21/2017

BASIS FOR MONUMENT LOCATION

1977 - PLS 1103 FOUND 3/4"X34" IRON PIPE SET BY ADAMS COUNTY SURVEYOR BARRETT ON APRIL 8-10, 1895, AS RECORDED ON PAGE 163 OF VOLUME 2 OF THE ADAMS COUNTY SURVEY RECORDS. LOCATION MATCHES ORIGINAL TIES TO BEARING TREE. REPLACED 3/4"X34" IRON PIPE WITH A HARRISON MONUMENT AND TIED OUT.

2017 - PLS 2994 FOUND HARRISON MONUMENT FLUSH WITH THE GROUND, 1 TIE AND 1 WITNESS. THE MONUMENT AGREES WITH THE EXISTING TIE AND WITNESS. ACCEPTED HARRISON AS CORNER LOCATION, SET 3 NEW TIES AND RE-MEASURED TO THE TIES AND WITNESS.



LOCATION
 (INDICATE CORNER BY "X")

SEAL:



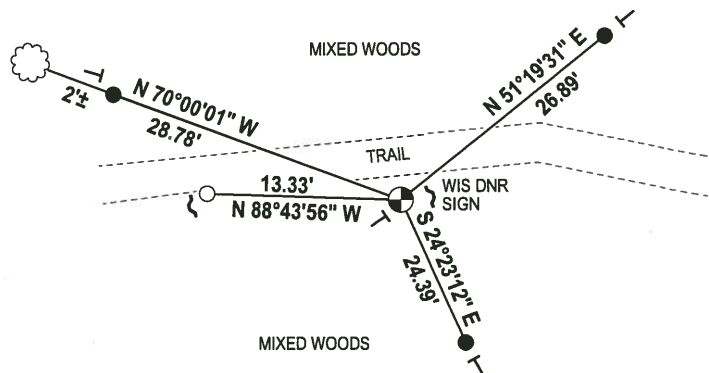
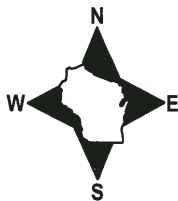
DATA SHOWN HERE ON THIS TIE SHEET IS CORRECT AND COMPLETE TO THE BEST OF MY KNOWLEDGE AND BELIEF.

PROFESSIONAL LAND SURVEYOR

DATE 7-14-17

- TIE SKETCH -

NOTE: THE CORNER FALLS 7± SOUTH OF THE CENTERLINE OF THE TRAIL.



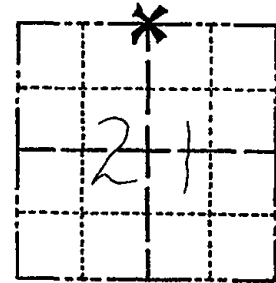
- 3/4" x 18" IRON REBAR SET, 1.50#/FT
- 3/4" IRON ROD FOUND
- ⊙ HARRISON FOUND
- ~ STEEL FENCE POST
- └ VINYL "T" POST
- ☼ FOUND WITNESS TREE

ADAMS COUNTY

Survey Monument Record

TYPE OF MONUMENT: HARRISON MONUMENT
STATE PLANE COORDINATES: N _____
E _____
ELEVATION — M.S.L. DATUM: _____
THETA ANGLE: _____
FIELD BOOK: 38 PAGE 31

CORNER NO. 66
SECTION 21
TOWN 14 NORTH
RANGE 6 EAST



LOCATION
(Indicated by 'X')

SEAL:

BASIS FOR MONUMENT LOCATION

(Use reverse side if necessary)

Show info such as: History of corner, with reference to Vol. and pg, dates, surveyor; exact description of monument replaced; if location computed, by taped or EDM traverse; landowner remarks, etc.

Recovered 3/4" x 34" Iron Pipe set by Adams County Surveyor Barrett on April 8-10, 1895, as recorded on Page 163 of Volume 2 of Adams County Survey Records.

Location matches original ties to bearing tree:
10" Blk Oak N 72° E 31 Links(20.46')

Replaced with Harrison monument on 2-14-1977.

CORNER O.K 12-18-81 SK-DW
" " 3-17-86 GR-SS
" " 6-20-91 JG
1 NEW TIE - Cor. O.K. 4-23-96 S.S.

2-GONE, 2-NEW TIES, NEW MONUMENT SET BY CARLSON SURVEYING
7-6-81 - JG
2-NEW TIES, 11-14-86 - JG
OR 4-7-11-SS



CERTIFIED CORRECT:

Dale C. Hagen
Registered Land Surveyor
DATE: 2-16-1977

TIE SKETCH

(Show at least four ties)

NOTE

Ties in trees to nail in disc. 15" Blk Oak/BT

± 250' E. of TRAIL N/S

