

15
SECTION

14
TOWN

06
RANGE

ADAMS COUNTY

COUNTY CORNER NO: 68

ROMPORTOL ID: 41406150020

PUBLIC LAND SURVEY MONUMENT RECORD

TYPE OF MONUMENT: HARRISON (BROKEN-TOP)
ADAMS COUNTY COORDINATES, NAD 83 (2007)

N. 116093.929

E. 544364.165

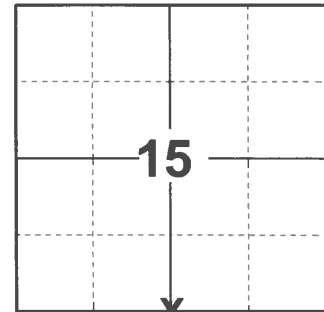
ELEVATION- DATUM

FIELD WORK DATE: 12/23/2020

BASIS FOR MONUMENT LOCATION

1974 - PLS 922 FOUND NAIL IN NORTH-SOUTH FENCE LINE, FITS EDM TRAVERSE GOOD. SET HARRISON.

2020 - PLS 2675 FOUND HARRISON (BROKEN-TOP) 6"± BELOW THE GROUND AND 1 WITNESS TREE. THE MONUMENT AGREES WITH THE WITNESS TREE AND THE SECTION SUMMARY DISTANCE BACK TO THE SE CORNER OF SECTION 15. ACCEPTED THE HARRISON (BROKEN-TOP) AS THE CORNER LOCATION. SET 4 NEW TIES AND MEASURED TO THE EXISTING WITNESS TREE.



LOCATION

(INDICATE CORNER BY "X")

SEAL:

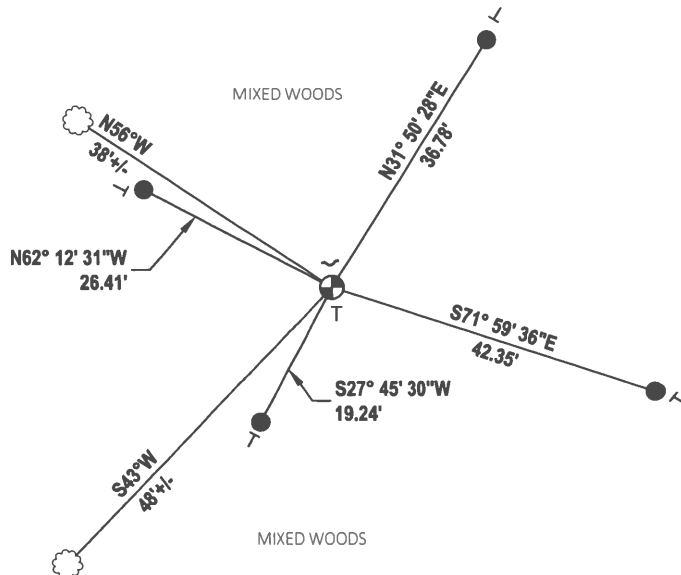
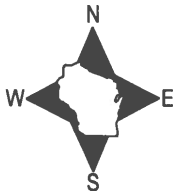


DATA SHOWN HERE ON THIS TIE SHEET IS CORRECT AND COMPLETE TO THE BEST OF MY KNOWLEDGE AND BELIEF.

PROFESSIONAL LAND SURVEYOR

DATE 3/3/2021

TIE SKETCH



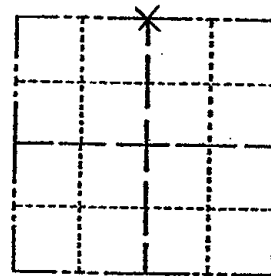
- SET 3/4" x 18" IRON REBAR, 1.50#/FT
- ⊙ FOUND HARRISON (BROKEN-TOP) MONUMENT
- ┘ STEEL FENCE POST
- └ VINYL "T" POST
- ☁ WITNESS TREE

ADAMS COUNTY

Survey Monument Record

TYPE OF MONUMENT: 36" HARRISON
 STATE PLANE COORDINATES: N _____
 E _____
 ELEVATION — M.S.L. DATUM: _____
 THETA ANGLE: _____
 FIELD BOOK: 423 PAGE 30

CORNER NO. 484
 SECTION 22
 TOWN 14
 RANGE 6



LOCATION
(Indicated by 'X')

SEAL:

BASIS FOR MONUMENT LOCATION

(Use reverse side if necessary)

Show info such as: History of corner, with reference to Vol. and pg, dates, surveyor; exact description of monument replaced; if location computed, by taped or EDM traverse; landowner remarks, etc.

8/14/74

FOUND NAIL IN NORTH-SOUTH
 FENCE LINE, FITS EDM
 TRAVERSE GOOD

CORNER O.K. 11-2-76 RN-SS
 CORNER OK 12-17-81 SK-DW
 " " " " " "
 " " 7-15-91 JG-SS

4-23-96 - FD. STEEL POST & TOP 1/4" OF HAR.
 1" UPRIGHT POSITION - DID NOT MATCH TIES.
 FD. REMAINING PORTION OF HAR. AT ORIGINAL
 LOCATION & 20' E. OF POST ETC. - MATCHES

CERTIFIED CORRECT:

Frederic W. Zietlow
 Registered Land Surveyor
 DATE: 8-27-74



TIE SKETCH

TIES - NEEDS TO BE REPLACED SOUTH SORENSEN NAILS IN TREES ARE AT RIGHT ANGLES
 WITNESSED BY ALBERT ZABORSKI TO MON.

(Show at least four ties)

STEEL POST IMMEDIATELY WEST
 OF HARRISON

1-GONE, 1-NEW TIE, MON. OK 3-14-02 JG-SS

(LANDOWNER TO WEST)

2 NEW TIES
 11-27-02 SS

