

PUBLIC LAND SURVEY MONUMENT RECORD

TYPE OF MONUMENT: HARRISON
 ADAMS COUNTY COORDINATES, NAD 83 (2007)

N. 116227.648

E. 546966.788

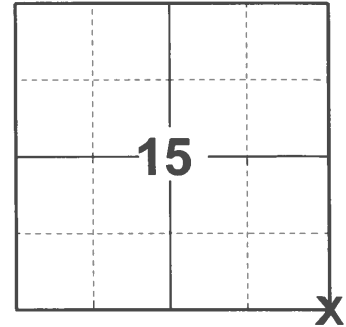
ELEVATION- DATUM

FIELD WORK DATE: 12/23/2020

BASIS FOR MONUMENT LOCATION

1975 - PLS 922 FOUND 3/4" IRON BAR SET BY SURVEYOR DAVE CLARK DECEMBER OF 1969. CHECKED OLD COUNTY SURVEY NOTES AND COULD NOT FIND ANY RE-SURVEYS ON FILE.

2020 - PLS 2675 FOUND HARRISON FLUSH WITH THE GROUND AND 4 WITNESS TREES. THE MONUMENT AGREES WITH ALL 4 WITNESS TREES. ACCEPTED THE HARRISON AS THE CORNER LOCATION. SET 4 NEW TIES AND MEASURED TO THE EXISTING WITNESS TREES.



LOCATION

(INDICATE CORNER BY "X")

SEAL:

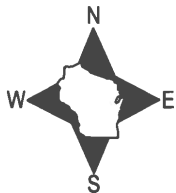


DATA SHOWN HERE ON THIS TIE SHEET IS CORRECT AND COMPLETE TO THE BEST OF MY KNOWLEDGE AND BELIEF.

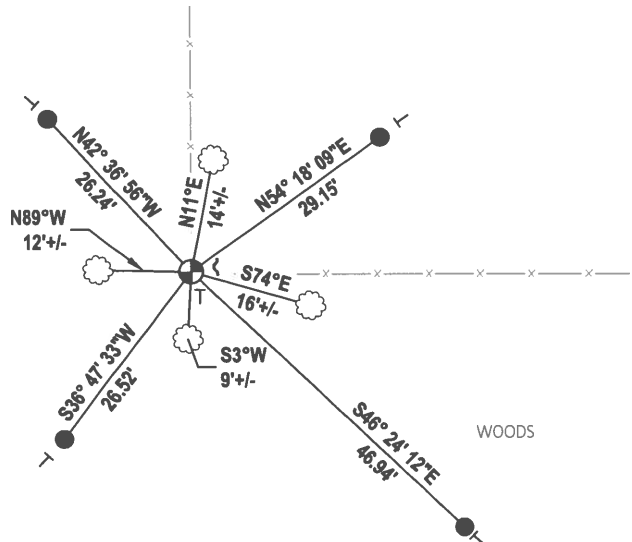
PROFESSIONAL LAND SURVEYOR

DATE 3/3/2021

- TIE SKETCH



MIXED



- SET 3/4" x 18" IRON REBAR, 1.50#/FT
- ⊕ FOUND HARRISON MONUMENT
- ┘ STEEL FENCE POST
- └ VINYL "T" POST
- ☁ WITNESS TREE

ADAMS COUNTY

Survey Monument Record *Set Harrison 4-28-75*

TYPE OF MONUMENT: 2" x 30" IRON PIPE

STATE PLANE COORDINATES: N _____

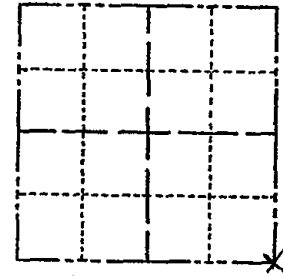
E _____

ELEVATION — M.S.L. DATUM: _____

THETA ANGLE: _____

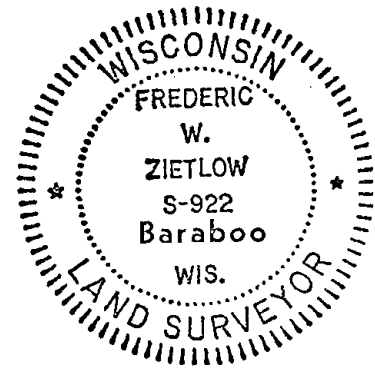
FIELD BOOK: _____ PAGE _____

CORNER NO. 605
 SECTION 15
 TOWN 14
 RANGE 6



LOCATION
(Indicated by 'X')

SEAL:



BASIS FOR MONUMENT LOCATION

(Use reverse side if necessary)

Show info such as: History of corner, with reference to Vol. and pg, dates, surveyor; exact description of monument replaced; if location computed, by taped or EDM traverse; landowner remarks, etc.

Found 3/4" iron bar set by surveyor Dave Clark December of 1969. Checked old county survey notes and could not find any re-surveys on file.

- CORNER O.K. 10-29-76
- CORNER O.K. 12-17-81 SK-DW
- " " 3-17-86
- " " 7-15-91 SS-JG
- " " 5-16-96 SS
- ALL OK 3-20-01-JG
- ALL OK 10-24-06 JG-JS
- OK 12-12-11 MS

CERTIFIED CORRECT:

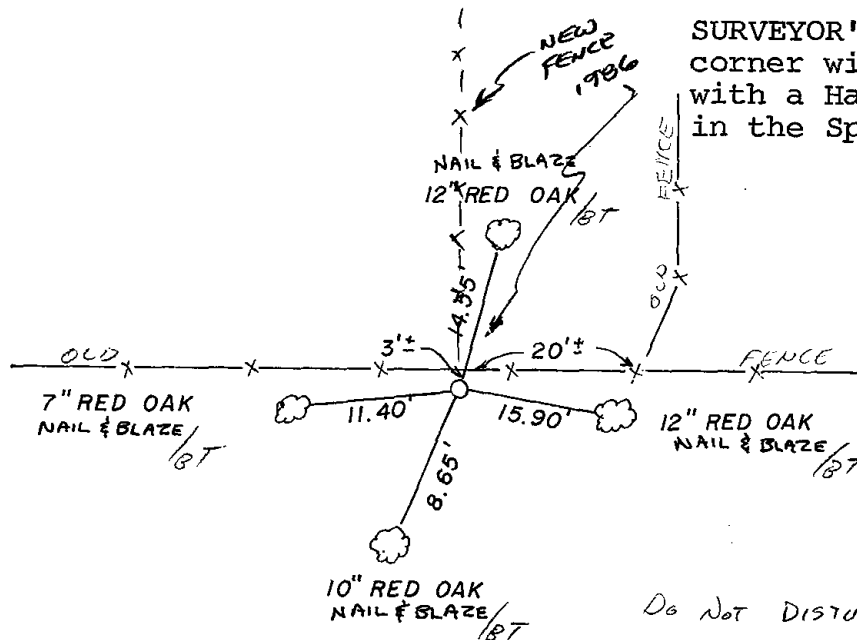
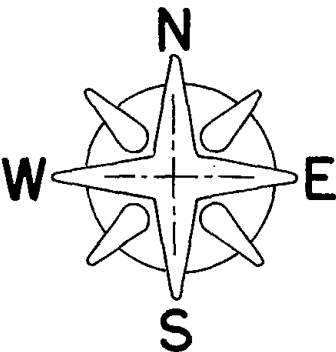
Frederic W. Zietlow

Registered Land Surveyor

DATE: JAN. 29, 1975

TIE SKETCH

(Show at least four ties)



SURVEYOR'S NOTE: This corner will be monumented with a Harrison Marker in the Spring of 1975.

Do Not DISTURB SIGN ON 3" White OAK 3' South OF CORNER 1986