

PUBLIC LAND SURVEY MONUMENT RECORD

TYPE OF MONUMENT: HARRISON
 ADAMS COUNTY COORDINATES, NAD 83 (2007)

N. 116431.311

E. 552243.325

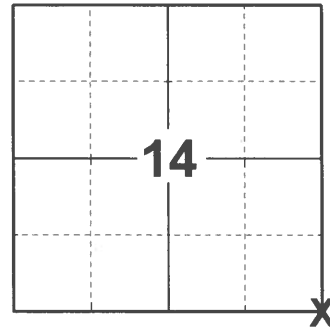
ELEVATION- DATUM

FIELD WORK DATE: 12/22/2020

BASIS FOR MONUMENT LOCATION

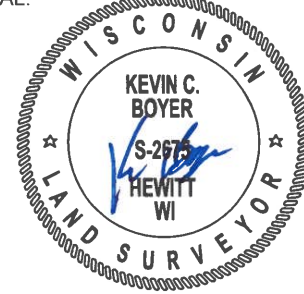
1974 - PLS 922 FOUND 3/4"X24" REBAR AT 3-WAY FENCE CORNER (NORTH-SOUTH-WEST). FIT GOOD WITH TAPE TRANSIT TRAVERSE.

2020- PLS 2675 FOUND HARRISON FLUSH WITH THE GROUND AND AT A NORTH-SOUTH FENCE. DID NOT RECOVER ANY EXISTING TIES OR WITNESSES. ACCEPTED THE HARRISON AS THE CORNER LOCATION AND SET 4 NEW TIES.



LOCATION
 (INDICATE CORNER BY "X")

SEAL:

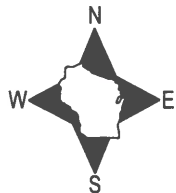


DATA SHOWN HERE ON THIS TIE SHEET IS CORRECT AND COMPLETE TO THE BEST OF MY KNOWLEDGE AND BELIEF.

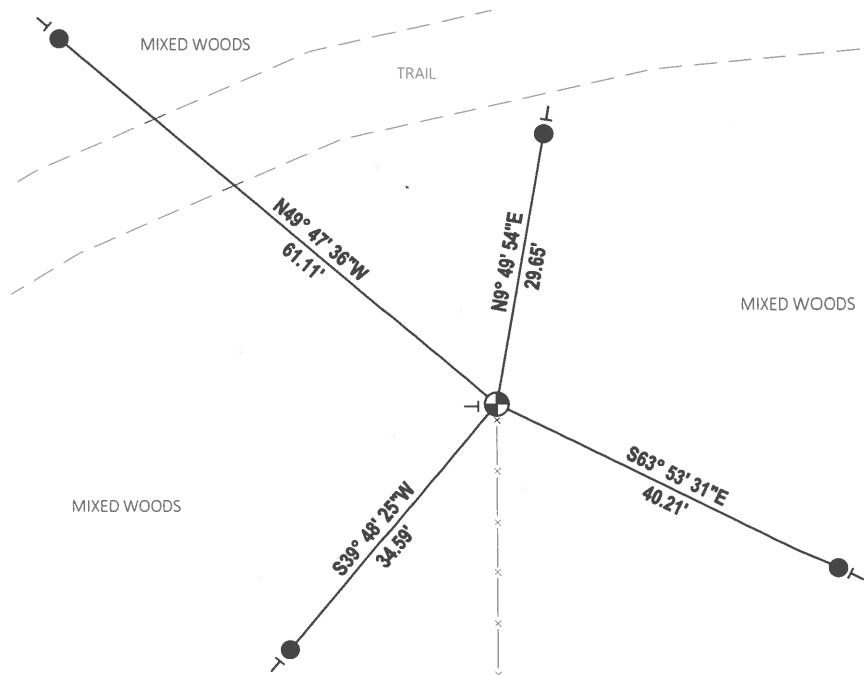
PROFESSIONAL LAND SURVEYOR

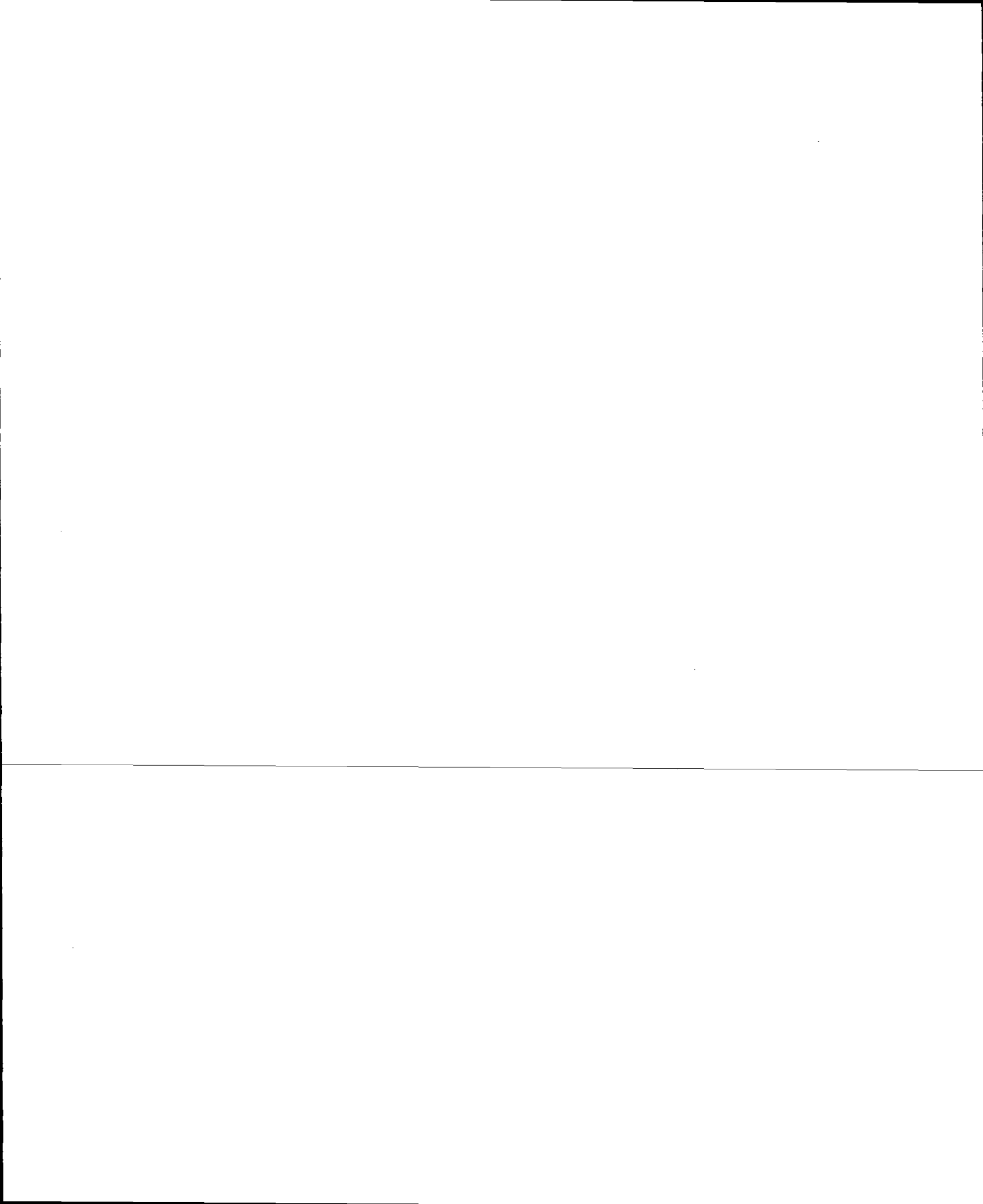
DATE 1/18/2021

TIE SKETCH



- SET 3/4" x 18" IRON REBAR, 1.50#/FT
- ⊕ FOUND HARRISON MONUMENT
- ┆ VINYL "T" POST





ADAMS COUNTY

CORNER NO. 478

Survey Monument Record

SECTION 23

TYPE OF MONUMENT: 30' HARRISON

TOWN 14

STATE PLANE COORDINATES: N

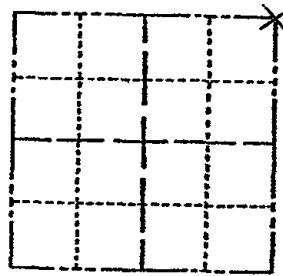
RANGE 6

E

ELEVATION - M.S.L. DATUM:

THETA ANGLE:

FIELD BOOK: 429 PAGE 22



LOCATION (Indicated by 'X')

SEAL:

BASIS FOR MONUMENT LOCATION

(Use reverse side if necessary)

Show info such as: History of corner, with reference to Vol. and pg, dates, surveyor; exact description of monument replaced; if location computed, by taped or EDM traverse; landowner remarks, etc.

8/19/74

FD. 3/4"x24" REBAR AT 3-WAY FENCE CORNER (NORTH-SOUTH - WEST) FIT GOOD WITH TAPE-TRANSIT TRAVERSE

CORNER O.K. 10-29-76 GR-XII

CORNER O.K. 15-17-81 SK-IDW

" " 3-2-86 " " "

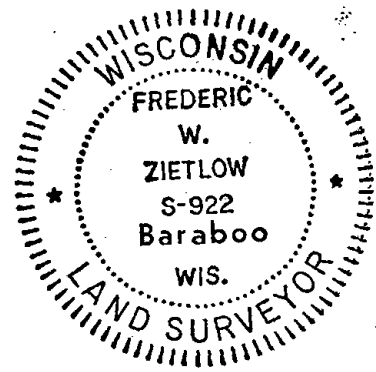
CORNER O.K. 7-18-91 CG-CR

" " " " " " "

2 NEW TIES 10-11-01 SS

" " " " 11-13-06 SCS

OK 12-27-11 MS



CERTIFIED CORRECT:

Frederic W. Zietlow Registered Land Surveyor

DATE: 8-27-74

TIE SKETCH

(Show at least four ties)

