

13
SECTION

14
TOWN

06
RANGE

ADAMS COUNTY

COUNTY CORNER NO: 72

ROMPORTOL ID: 41406130020

PUBLIC LAND SURVEY MONUMENT RECORD

TYPE OF MONUMENT: HARRISON (BROKEN-TOP)

ADAMS COUNTY COORDINATES, NAD 83 (2007)

N. 116571.519

E. 554899.305

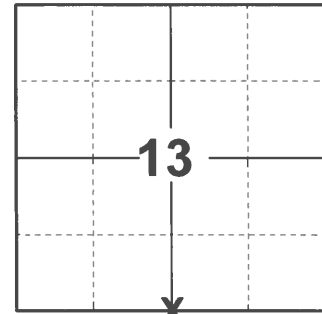
ELEVATION- DATUM

FIELD WORK DATE: 12/23/2020

BASIS FOR MONUMENT LOCATION

1977 - PLS 1103 RAN EDM/T2 TRAVERSE AROUND NORTH AND WEST LINES OF SECTION 24 TO DETERMINE SEARCH AREAS FOR INVESTIGATION. COULD FIND NO EVIDENCE OF THE ORIGINAL CORNER, AND REMONUMENTATION OR ANY ACCESSORY MONUMENTS. SET CORNER BY SINGLE PROPORTIONATE MEASURE ON LINE BETWEEN ADJACENT SECTION CORNERS. SET HARRISON MONUMENT.

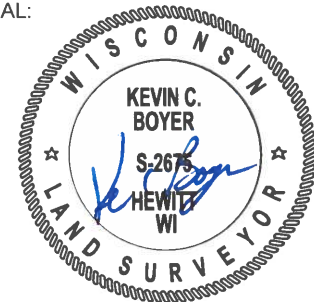
2020 - PLS 2675 FOUND HARRISON (BROKEN-TOP) 12"± BELOW THE GROUND AND EXISTING TIES OR WITNESSES. THE CORER WAS VERIFIED TO BE ON A NEAR STRAIGHT LINE BETWEEN THE SE AND SW CORNERS OF SECTION 13. ACCEPTED THE HARRISON (BROKEN-TOP) AS THE CORNER LOCATION AND SET 4 NEW TIES.



LOCATION

(INDICATE CORNER BY "X")

SEAL:

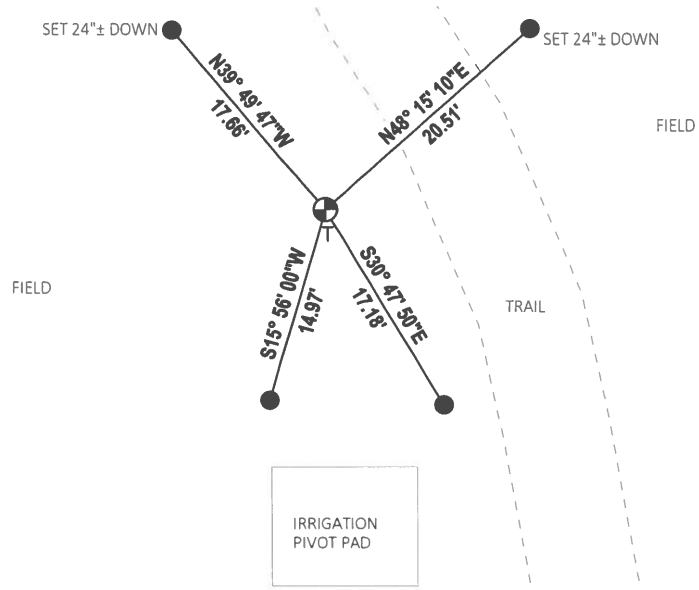
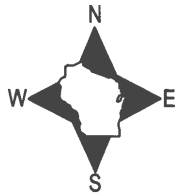


DATA SHOWN HERE ON THIS TIE SHEET IS CORRECT AND COMPLETE TO THE BEST OF MY KNOWLEDGE AND BELIEF.

PROFESSIONAL LAND SURVEYOR

DATE 3/3/2021

TIE SKETCH



- SET 3/4" x 18" IRON REBAR, 1.50#/FT
- ⊕ FOUND HARRISON (BROKEN-TOP) MONUMENT
- VINYL "T" POST

ADAMS COUNTY

Survey Monument Record

TYPE OF MONUMENT: Harrison Monument

STATE PLANE COORDINATES: N _____

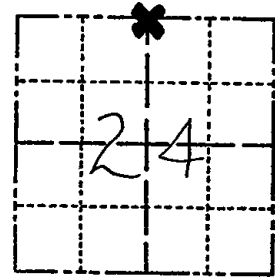
E _____

ELEVATION — M.S.L. DATUM: _____

THETA ANGLE: _____

FIELD BOOK: 38 PAGE 34

CORNER NO. 72
SECTION 24
TOWN 14
RANGE 6



LOCATION
(Indicated by 'X')

SEAL:



BASIS FOR MONUMENT LOCATION

(Use reverse side if necessary)

Show info such as: History of corner, with reference to Vol. and pg, dates, surveyor; exact description of monument replaced; if location computed, by taped or EDM traverse; landowner remarks, etc.

Ran EDM/T2 traverse around North and West lines of Section 24 to determine search areas for investigation.

Could find no evidence of the original corner, and remonumentation or any accessory monuments.

Set corner by single proportionate measure on line between adjacent sections corners.

Harrison monument set 3-25-77.

CORNER a.k. 12-16-81 SK-DW
" " 3-6-86 GR-SS

AREA UNDER CULTIVATION '96
NO EVIDENCE REMAINING
CULTIVATION NO EVIDENCE 12-20-11 MS

CERTIFIED CORRECT:

Dale C Hagen
Registered Land Surveyor
DATE: 5-31-77

TIE SKETCH

(Show at least four ties)

NOTE

Ties in trees to nail in disc.

