

PUBLIC LAND SURVEY MONUMENT RECORD

TYPE OF MONUMENT: HARRISON
 ADAMS COUNTY COORDINATES, NAD 83 (2007)

N. 113286.094

E. 536440.758

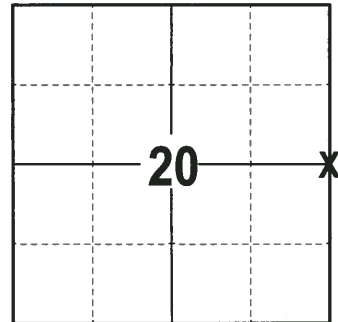
ELEVATION- DATUM

FIELD WORK DATE: 06/21/2017

BASIS FOR MONUMENT LOCATION

1979 - PLS 1478 FOUND FLATTENED PILE OF SANDSTONE AND BEARING TREE STUMP. THE BEARING TREE STUMP IS RECORDED IN ADAMS COUNTY SURVEYOR'S NOTES FIELDBOOK 2 PAGE 164 BY A. J. BARRETT. VERIFIED CORNER LOCATION BY TRAVERSE TO THE NE CORNER OF SECTION 20 AND TO THE MEANDER CORNER ON THE EAST BANK OF THE WISCONSIN RIVER, BETWEEN SECTION 20 & 21 T14N, R6E.

2017 - PLS 2994 FOUND HARRISON MONUMENT FLUSH WITH THE GROUND, 1 TIE AND 3 WITNESSES. THE MONUMENT AGREES WITH THE EXISTING TIE AND WITNESSES. ACCEPTED HARRISON AS CORNER THE LOCATION. SET 3 NEW TIES AND RE-MEASURED TO THE TIES AND WITNESSES.



LOCATION
 (INDICATE CORNER BY "X")

SEAL:



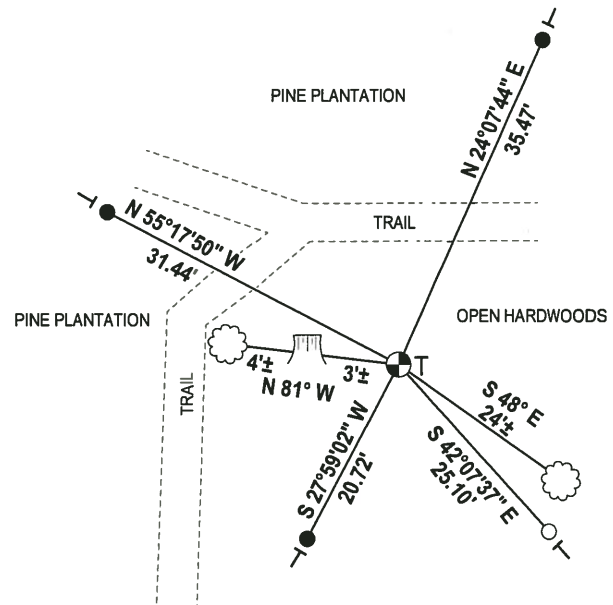
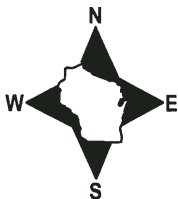
DATA SHOWN HERE ON THIS TIE SHEET IS CORRECT AND COMPLETE TO THE BEST OF MY KNOWLEDGE AND BELIEF.

PROFESSIONAL LAND SURVEYOR

DATE 7-14-17

- TIE SKETCH

NOTE: THE CORNER FALLS 21'± EAST OF THE CENTERLINE OF A NORTH AND SOUTH TRAIL, AND 22'± SOUTH OF THE CENTERLINE OF A EAST AND WEST TRAIL.



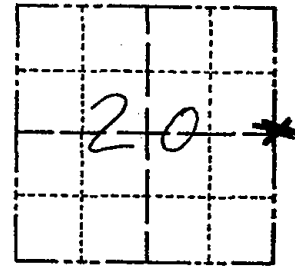
- 3/4" x 18" IRON REBAR SET, 1.50#/FT
- 1-1/4" O.D. IRON PIPE FOUND
- ⊙ HARRISON FOUND
- └ VINYL "T" POST
- └ WITNESS TREE STUMP FOUND
- ☁ WITNESS TREE FOUND

Government Land Corner Certificate

HAR. SET

Adams County
 TYPE OF MONUMENT: HARRISON STANDARD *Temp. tip to be replaced spring '80*
 STATE PLANE COORDINATES: N _____ E _____
 ELEVATION — M.S.L. DATUM: _____
 THETA ANGLE: _____
 FIELD BOOK: 83 PAGE 13
 DRAWN BY: G. RHINEHART

CORNER NO. 76
 SECTION 20
 TOWN 14
 RANGE 6



LOCATION
(Indicated by 'X')

BASIS FOR MONUMENT LOCATION

Show info such as: History of corner, with reference to Vol. and pg., dates, surveyor; exact description of monument replaced; if location computed, by taped or EDM traverse; landowner remarks, etc. (Use reverse side if necessary)

Found flattened pile of sandstone and bearing tree stump. The bearing tree stump is recorded in Adams County surveyor's notes Fieldbook 2 page 164 by A. J. Barrett.

The location of this corner was verified by EDM traverse to the NE corner of Section 20 and to the Meander Corner, on the East Bank of the Wisconsin River, between Sections 20 & 21 T14N, R6E.

- 2 OR 10 R O.K 12-18-81 SK. DWJ
- " " 2-13-86 GR. SS
- " " 6-20-91 JG
- " " 4-24-96 JG-SS
- 2-NEW TIES MON. OK 3-13-02 - JG
- ALL OK, 11-28-06 JG-SS
- 2 NEW 7-5-11 SS

SEAL:



DATA SHOWN HERE ON CERTIFIED CORRECT:

Gregory P Rhinehart
 Registered Land Surveyor

DATE: 12/19/79

TIE SKETCH

Show at least four ties, also fence lines, roads, topo, size and type of witness trees' and if off road - best way to arrive at corner.

