

21 SECTION 14 TOWN 06 RANGE

ADAMS COUNTY

COUNTY CORNER NO: 85B
ROMPORTOL ID: 41406200000B

PUBLIC LAND SURVEY MONUMENT RECORD

TYPE OF MONUMENT: 2-3/8" O.D. IRON PIPE W/ALUMINUM CAP (MEANDER CORNER)
ADAMS COUNTY COORDINATES, NAD 83 (2007)

N. 110688.832

E. 538463.690

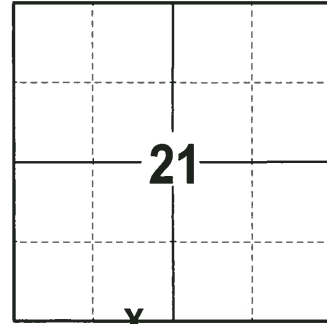
ELEVATION- DATUM

FIELD WORK DATE: 07/12/2017

BASIS FOR MONUMENT LOCATION

1979 - PLS 1478 SET 2-3/8" O.D. IRON PIPE WITH CAP AS MONUMENT AT THE RECORDED DISTANCE AND BEARING FROM ORIGINAL BEARING TREE (S11°E 45LK(29.7')). THIS LOCATION FITS THE SOUTH LINE OF 21 EXTREMELY WELL.

2017 - PLS 2994 FOUND 2-3/8" O.D. IRON PIPE WITH ALUMINUM CAP 6" ABOVE THE GROUND SURFACE AND 5 WITNESSES. THE MONUMENT AGREES WITH THE EXISTING WITNESSES. ACCEPTED 2-3/8" O.D. IRON PIPE WITH ALUMINUM CAP AS THE CORNER LOCATION. SET 4 NEW TIES AND RE-MEASURED TO THE EXISTING WITNESSES.



LOCATION
(INDICATE CORNER BY "X")

SEAL:



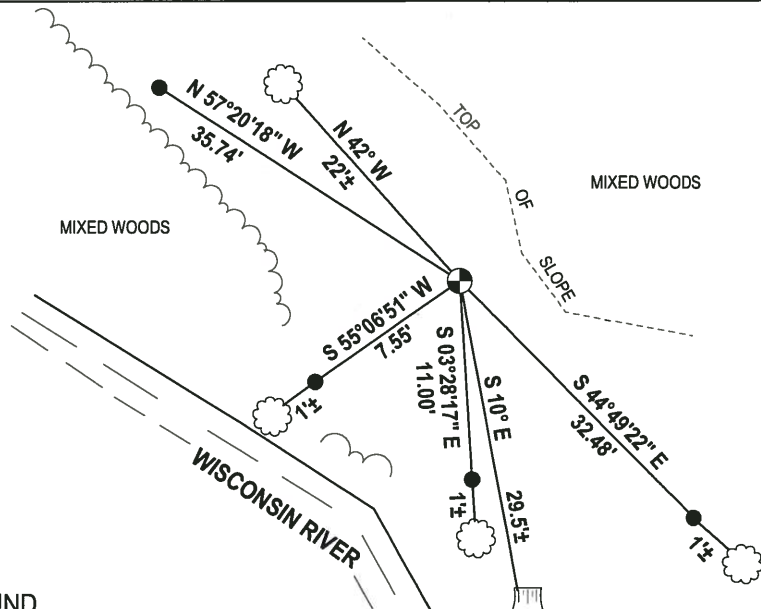
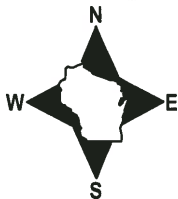
DATA SHOWN HERE ON THIS TIE SHEET IS CORRECT AND COMPLETE TO THE BEST OF MY KNOWLEDGE AND BELIEF.

PROFESSIONAL LAND SURVEYOR

DATE 7-14-17

- TIE SKETCH

NOTE: THE CORNER FALLS 11'±
SOUTHWEST OF THE TOP OF SLOPE.

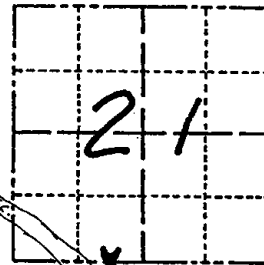


- 3/4" x 18" IRON REBAR SET, 1.50#/FT
- ⊕ 2-3/8" O.D. IRON PIPE W/ALUMINUM CAP FOUND
- ☐ WITNESS TREE STUMP FOUND
- ☁ WITNESS TREE FOUND

Government Land Corner Certificate

ADAMS County
 TYPE OF MONUMENT: 2" X 30" Iron Pipe/ Alum. cap
 STATE PLANE COORDINATES: N _____
 E _____
 ELEVATION — M.S.L. DATUM: _____
 THETA ANGLE: _____
 FIELD BOOK: 74 PAGE 132
 DRAWN BY: G. Rhinehart

CORNER NO. 85
 SECTION 21
 TOWN 14
 RANGE 6



LOCATION
 (Indicated by 'X')

SEAL:



DATA SHOWN HERE ON
 CERTIFIED CORRECT:

Gregory P Rhinehart
 Registered Land Surveyor

DATE: 12/5/79

BASIS FOR MONUMENT LOCATION

Show info such as: History of corner, with reference to Vol. and pg., dates, surveyor; exact description of monument replaced; if location computed, by taped or EDM traverse; landowner remarks, etc. (Use reverse side if necessary)

Set Monument at record distance and bearing from original BT (S11° E 45 lks (29.7')). This location fits the south line of 21 extremely well.

Blaze portion of B.T. stub are in the offices of Kiedrowski at Wisc. Rapids, Wisc.

TIE SKETCH

Show at least four ties, also fence lines, roads, topo, size and type of witness trees and if off road - best way to arrive at corner.

