

PUBLIC LAND SURVEY MONUMENT RECORD

TYPE OF MONUMENT: HARRISON
 ADAMS COUNTY COORDINATES, NAD 83 (2007)

N. 110685.902

E. 539066.570

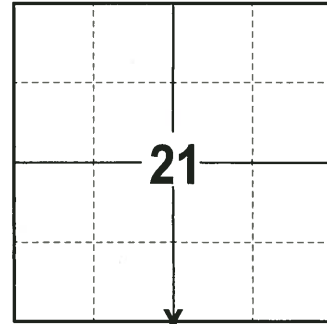
ELEVATION- DATUM

FIELD WORK DATE: 07/12/2017

BASIS FOR MONUMENT LOCATION

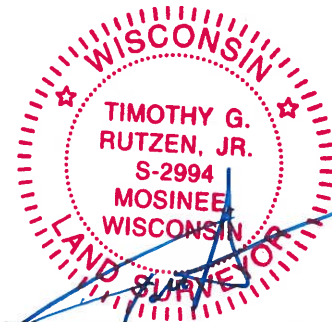
1976 - PLS 922 CHECKED ADAMS COUNTY SURVEY RECORDS AND FOUND THAT IN APRIL OF 1895, CO. SURVEYOR BARRETT DID AN EXTENSIVE AMOUNT OF SURVEYS IN THIS AREA. SEE VOL. 2, PAGE 163 A.C.S.R. BARRETT DID NOT REMONUMENT THIS CORNER. RECOVERED STONES AND IRONS AT THE N1/16 CORNER, NE1/4 CORNER AND THE NE CORNER OF SECTION 28. RAN E.D.M TRAVERSE AND PUT THE N1/4 CORNER AT DOUBLE THE DISTANCE AND ON A LINE PROJECTED FROM THE NE CORNER THROUGH THE 1/16 CORNER TO THE WEST. EXCAVATED BY HAND AND FOUND NO EVIDENCE OF THE ORIGINAL CORNER. SET HARRISON MONUMENT AND TIED OUT.

2017 - PLS 2994 FOUND HARRISON MONUMENT 6" ABOVE THE GROUND SURFACE AND 3 WITNESSES. THE MONUMENT AGREES WITH THE EXISTING WITNESSES. ACCEPTED HARRISON MONUMENT AS THE CORNER LOCATION. SET 4 NEW TIES AND RE-MEASURED TO THE EXISTING WITNESSES.



LOCATION
 (INDICATE CORNER BY "X")

SEAL:

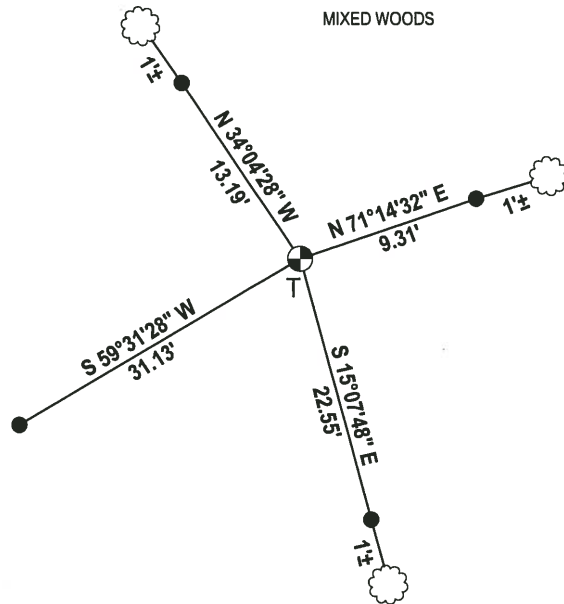
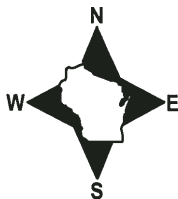


DATA SHOWN HERE ON THIS TIE SHEET IS CORRECT AND COMPLETE TO THE BEST OF MY KNOWLEDGE AND BELIEF.

PROFESSIONAL LAND SURVEYOR

DATE 7-14-17

- TIE SKETCH -



- 3/4" x 18" IRON REBAR SET, 1.50#/FT
- ⊙ HARRISON FOUND
- VINYL "T" POST
- ☁ WITNESS TREE FOUND

ADAMS COUNTY

Survey Monument Record

TYPE OF MONUMENT: 30" STANDARD HARRISON

STATE PLANE COORDINATES: N _____

E _____

ELEVATION — M.S.L. DATUM: _____

THETA ANGLE: _____

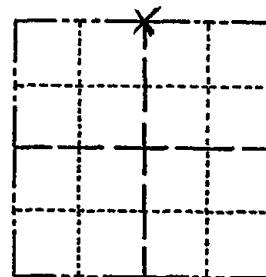
FIELD BOOK: 525 PAGE 11

CORNER NO. 998

SECTION 28

TOWN 14N

RANGE 6E



LOCATION
(Indicated by 'X')

SEAL:



CERTIFIED CORRECT:

Frederic W. Zietlow

Registered Land Surveyor

DATE: AUGUST 16, 1976

BASIS FOR MONUMENT LOCATION

(Use reverse side if necessary)

Show info such as: History of corner, with reference to Vol. and pg. dates, surveyor; exact description of monument replaced; if location computed, by taped or EDM traverse; landowner remarks, etc.

CHECKED ADAMS COUNTY SURVEY RECORDS AND FOUND THAT IN APRIL OF 1895, Co. SURVEYOR BARRETT DID AN EXTENSIVE AMOUNT OF SURVEYING IN THIS AREA. SEE VOL. 2, PAGE 163 A.C.S.R. BARRETT DID NOT REMONUMENT THIS CORNER. WE RECOVERED STONES & IRONS AT THE NW/4 COR NE/4 AND AT THE NE COR OF SEC. 28. WE RAN AN EDM. TRAVERSE AND PUT THE NW/4 COR AT DOUBLE THE DISTANCE $\frac{1}{2}$ ON LINE PROJECT FROM THE NE COR THRU THE $\frac{1}{16}$ COR TO WEST. EXCAVATED BY HAND & COULD FIND NO EVIDENCE OF ORIGINAL CORNER IN THIS VICINITY.

CORNER OK 12-17-81 SK-DW

TIE SKETCH

(Show at least four ties)

- 2-12-86 GR-SS OK
- ALL OK 3-25-91 GR-JG
- 2-26-96 - 1 NEW-SS
- OK 3-7-02 - JG
- ALL OK, 11-28-06 - JG-SS
- " 4-7-11 SS

