

22 SECTION 14 TOWN 06 RANGE

ADAMS COUNTY

COUNTY CORNER NO: 89
ROMPORTOL ID: 41406220000

PUBLIC LAND SURVEY MONUMENT RECORD

TYPE OF MONUMENT: SURVEY NAIL
ADAMS COUNTY COORDINATES, NAD 83 (2007)

N. 110976.732

E. 546972.354

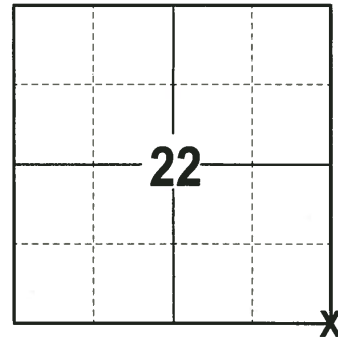
ELEVATION- DATUM

FIELD WORK DATE: 06/22/2017

BASIS FOR MONUMENT LOCATION

1974 - PLS 922 FOUND R.R SPIKE IN THE CENTERLINE OF 9TH AVE. IN LINE WITH FENCE LINE TO THE EAST, FIT WELL WITH TRANSIT-TAPE TRAVERSE. SET HARRISON AND 4 WITNESSES.

2017 - PLS 2994 FOUND MAG NAIL IN ROADWAY, REMOVED AND FOUND NO OTHER EVIDENCE OF ANOTHER MONUMENT. ALSO FOUND 3 WITNESSES. THE MAG NAIL LOCATION AGREES WITH THE EXISTING FOUND WITNESSES. ACCEPTED MAG NAIL AS CORNER LOCATION, RE-SET A SURVEY NAIL AND SET 4 NEW TIES. RE-MEASURED TO THE EXISTING WITNESSES AND TIES.



LOCATION
(INDICATE CORNER BY "X")

SEAL:



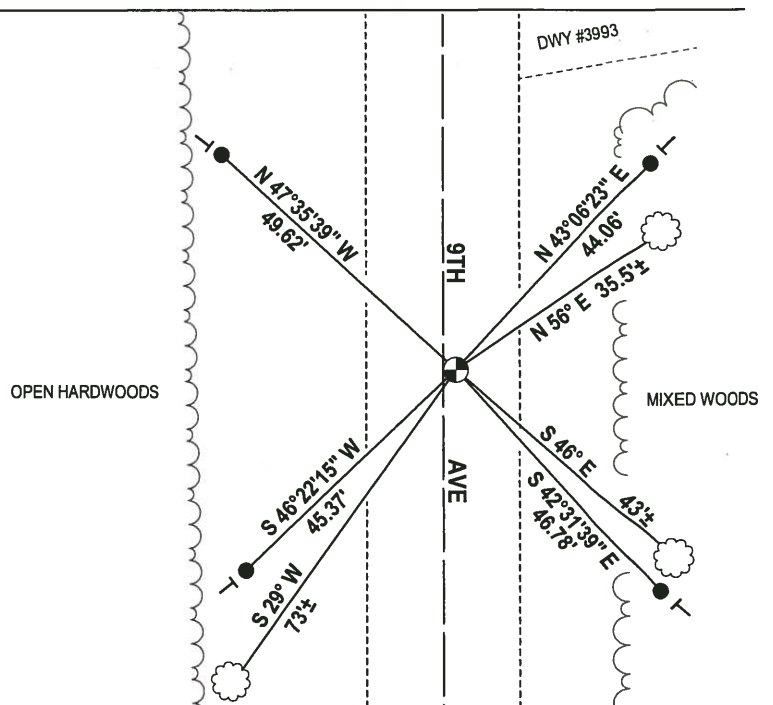
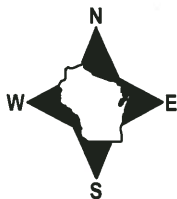
DATA SHOWN HERE ON THIS TIE SHEET IS CORRECT AND COMPLETE TO THE BEST OF MY KNOWLEDGE AND BELIEF.

PROFESSIONAL LAND SURVEYOR

DATE 7-14-17

- TIE SKETCH

NOTE: THE CORNER FALLS 2± EAST OF THE CENTERLINE OF 9TH AVE.



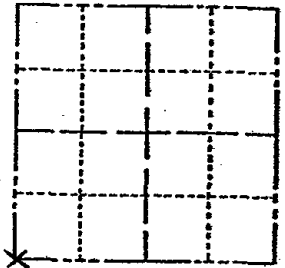
- 3/4" x 18" IRON REBAR SET, 1.50#/FT
- ⊕ SURVEY NAIL (RE-SET)
- ⊥ VINYL "T" POST
- ☁ WITNESS TREE FOUND

ADAMS COUNTY

Survey Monument Record

TYPE OF MONUMENT: 30" HARRISON
 STATE PLANE COORDINATES: N _____
 E _____
 ELEVATION — M.S.L. DATUM: _____
 THETA ANGLE: _____
 FIELD BOOK: 429 PAGE 22

CORNER NO. 481
 SECTION 23
 TOWN 14
 RANGE 6



LOCATION
(Indicated by 'X')

BASIS FOR MONUMENT LOCATION

(Use reverse side if necessary)

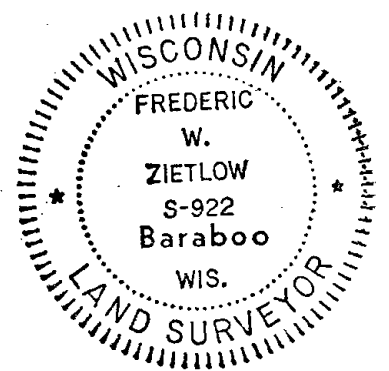
Show info such as: History of corner, with reference to Vol. and pg. dates, surveyor; exact description of monument replaced; if location computed, by taped or EDM traverse; landowner remarks, etc.

8/19/74

FOUND R.R. SPIKE IN E OF 9th CT. OFF FENCE LINE TO EAST FIT GOOD WITH TRANSIT-TAPE TRAVERSE

CORNER OF 10-29-76 GR-DCH

- CORNER O.K 12-16-81 SK-DW
- " " 2-6-86 GR-SS
- " " 6-20-91 JG
- " " 4-23-96 SS



CERTIFIED CORRECT:

Frederic W. Zietlow
 Registered Land Surveyor

DATE: 8-27-74

PULL REMAINING TIES, CANNOT FIND CORNER 3-20-01 JG
 SET MAG NAIL OFF REMAINING TIES, 1-NEW TIE 3-14-02 JG-SS
 2-GONE, 3-NEW TIES, MAG NAIL, 10-24-06 JG-JS

TIE SKETCH

(Show at least four ties)

