

## PUBLIC LAND SURVEY MONUMENT RECORD

TYPE OF MONUMENT: HARRISON  
 ADAMS COUNTY COORDINATES, NAD 83 (2007)

N. 111071.233

E. 549604.652

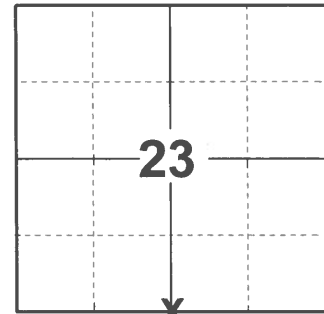
ELEVATION- \_\_\_\_\_ DATUM \_\_\_\_\_

FIELD WORK DATE: 01/05/2021

### BASIS FOR MONUMENT LOCATION

1974 - PLS 922 SET HARRISON MONUMENT.

2021 - PLS 2675 FOUND HARRISON FLUSH WITH THE GROUND AND 3 WITNESS TREES. THE MONUMENT AGREES WITH ALL 3 WITNESS TREES. ACCEPTED THE HARRISON AS THE CORNER LOCATION. SET 4 NEW TIES AND MEASURED TO THE EXISTING WITNESS TREES.



**LOCATION**

(INDICATE CORNER BY "X")

SEAL:



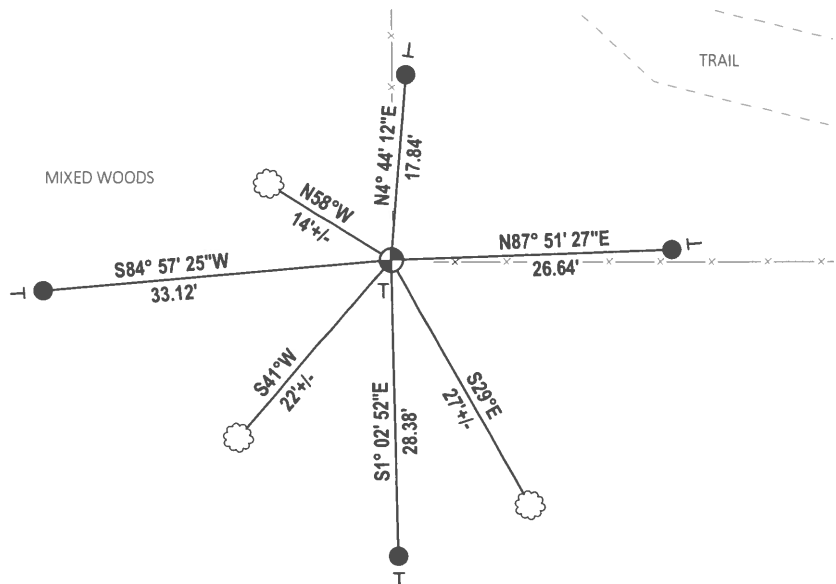
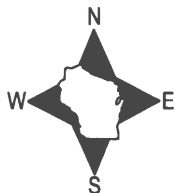
DATA SHOWN HERE ON THIS TIE SHEET IS CORRECT AND COMPLETE TO THE BEST OF MY KNOWLEDGE AND BELIEF.

PROFESSIONAL LAND SURVEYOR

DATE 3/3/2021

### TIE SKETCH

NOTE: THE CORNER LANDS 33'± SOUTH WEST OF THE TRAIL.



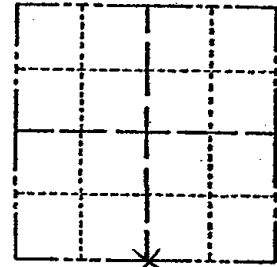
- SET 3/4" x 18" IRON REBAR, 1.50#/FT
- ⊕ FOUND HARRISON MONUMENT
- VINYL "T" POST
- ☼ WITNESS TREE

ADAMS COUNTY

Survey Monument Record

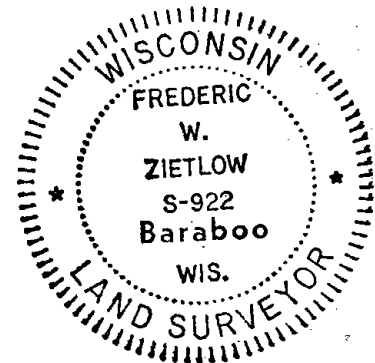
TYPE OF MONUMENT: 30" HARRISON  
STATE PLANE COORDINATES: N \_\_\_\_\_  
E \_\_\_\_\_  
ELEVATION — M.S.L. DATUM: \_\_\_\_\_  
THETA ANGLE: \_\_\_\_\_  
FIELD BOOK: 429 PAGE 22

CORNER NO. 480  
SECTION 23  
TOWN 14  
RANGE 6



LOCATION  
(Indicated by 'X')

SEAL:



BASIS FOR MONUMENT LOCATION

(Use reverse side if necessary)

Show info such as: History of corner, with reference to Vol. and pg, dates, surveyor; exact description of monument replaced; if location computed, by taped or EDM traverse; landowner remarks, etc.

8/19/74

FD. 3/4"x24" REBAR AT  
4-WAY FENCE CORNER - FIT  
GOOD WITH TRANSIT TAPE  
TRAVERSE

CORNER O.K. 10-29-76 GR-DCH

CORNER O.K. 12-16-81 SK-DW

1 NEW TIE 2-13-86 GR-SS

CORNER OK 6-20-91 JG

" " 4-23-92 MS

1 NEW TIE 10-12-01 SS

CERTIFIED CORRECT:

Registered Land Surveyor

DATE:

8-27-74

TIE SKETCH

ALL OK 11-13-06 - JG-SS  
OK 12-20-11 MS

(Show at least four ties)

