

PUBLIC LAND SURVEY MONUMENT RECORD

TYPE OF MONUMENT: 1-1/2" O.D. IRON PIPE
 ADAMS COUNTY COORDINATES, NAD 83 (2007)

N. 108068.782

E. 541668.746

ELEVATION- _____ DATUM _____

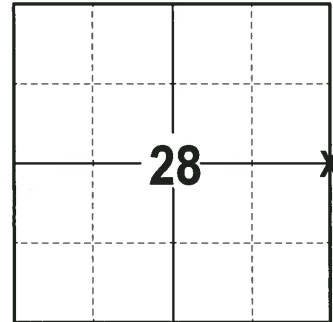
FIELD WORK DATE: 07/05/2017

BASIS FOR MONUMENT LOCATION

1895 - CO. SURVEYOR A.J. BARRETT SET A GAS PIPE AS THE CORNER.

1976 - PLS 922 FOUND GAS PIPE, BUT COULD NOT REMOVE TO PLACE A HARRISON AS IT WAS WELL GROWN INTO THE ROOT SYSTEM OF A 12" BURR OAK. ALSO FOUND 3 TAPERED STONES AROUND THE PIPE, WHICH WERE EVIDENTLY PLACED BY BARRETT. SEE VOLUME 2 PAGE 163 A.C.S.R. TIED OUT CORNER.

2017 - PLS 2994 FOUND A 1-1/2" OD IRON PIPE 2" ABOVE THE SURFACE AND 3 WITNESSES. THE MONUMENT AGREES WITH THE EXISTING WITNESSES.. ACCEPTED 1-1/2" OD IRON PIPE AS THE CORNER LOCATION. SET 4 NEW TIES AND RE-MEASURED TO EXISTING WITNESSES.



LOCATION
 (INDICATE CORNER BY "X")

SEAL:



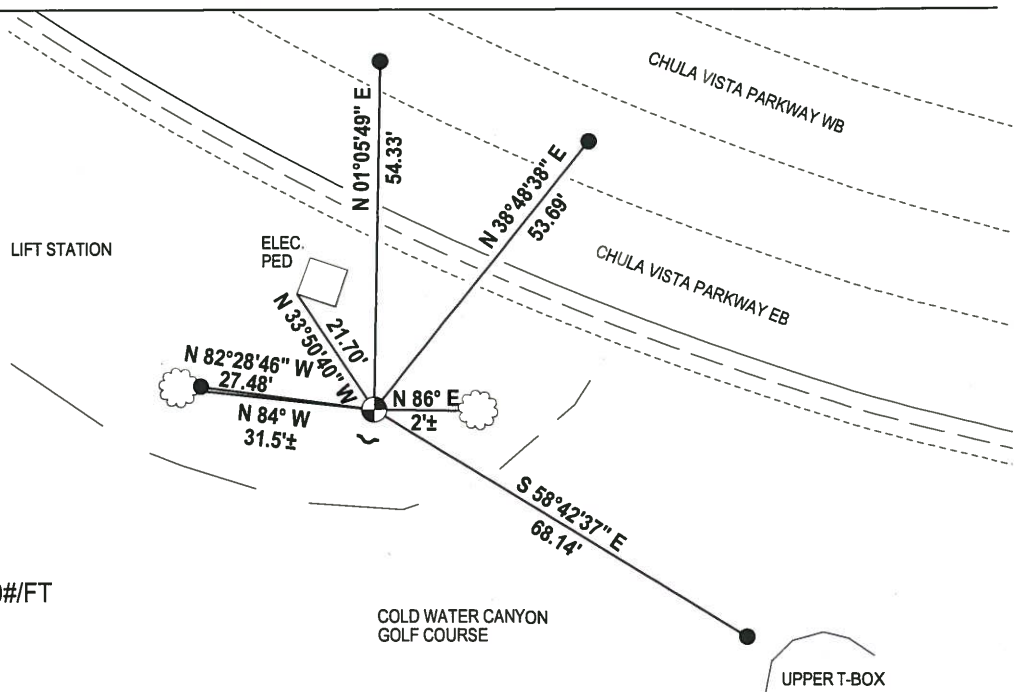
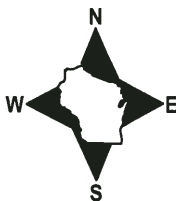
DATA SHOWN HERE ON THIS TIE SHEET IS CORRECT AND COMPLETE TO THE BEST OF MY KNOWLEDGE AND BELIEF.

PROFESSIONAL LAND SURVEYOR

DATE 7-14-17

- TIE SKETCH

NOTE: THE CORNER FALLS 37'± SOUTH OF THE CENTERLINE OF CHULA VISTA PARKWAY EB.



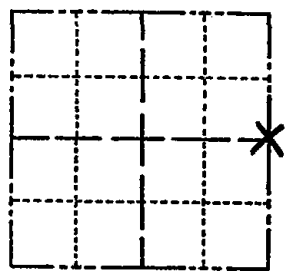
- 3/4" x 18" IRON REBAR SET, 1.50#/FT
- ⊙ 1-1/2" O.D. IRON PIPE FOUND
- ⌘ STEEL FENCE POST
- ☁ WITNESS TREE FOUND

ADAMS COUNTY

Survey Monument Record

TYPE OF MONUMENT: 1 1/2" GAS PIPE
 STATE PLANE COORDINATES: N _____
 E _____
 ELEVATION — M.S.L. DATUM: _____
 THETA ANGLE: _____
 FIELD BOOK: 525 PAGE 12

CORNER NO. 999
 SECTION 28
 TOWN 14 N
 RANGE 6 E



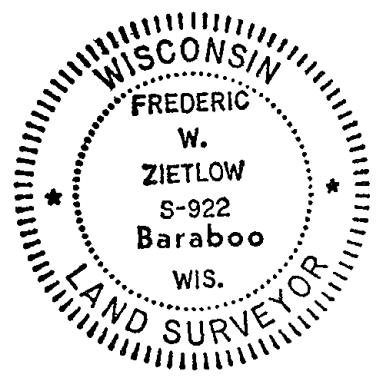
LOCATION
(Indicated by 'X')

BASIS FOR MONUMENT LOCATION

(Use reverse side if necessary)

Show info such as: History of corner, with reference to Vol. and pg, dates, surveyor; exact description of monument replaced; if location computed, by taped or EDM traverse; landowner remarks, etc.

SEAL:



RESEARCHED ADAMS COUNTY SURVEY RECORDS AND FOUND THAT IN APRIL OF 1895 CO. SURVEYOR A.J. BARRETT SET A GAS PIPE AT THIS CORNER. WE RECOVERED THIS MONUMENT. WE COULD NOT REMOVE IT TO PLACE A HARRISON AS IT IS WELL GROWN INTO THE ROOT SYSTEM OF A 12" BURR OAK. THERE ALSO 3 TAPERED STONES AROUND THIS PIPE, WHICH EVIDENTLY WERE PLACED BY BARRETT.

SEE VOLUME 2 PAGE 163 A.C.S.R.

| | | | |
|--------|-----|----------|-------|
| CORNER | O.K | 12-16-81 | SK-DW |
| " | " | 3-17-86 | GR |
| " | " | 3-25-91 | GR-JG |

CERTIFIED CORRECT:

Frederic W. Zietlow
 Registered Land Surveyor

DATE: AUGUST 16, 1976

TIE SKETCH

CORNER OK 4-24-96 JG-SS

(Show at least four ties)

1-GONE, CORNER IS IN NEWLY CONSTRUCTED GOLF COURSE 3-20-01 JC
 1-NEW, 11-27-06 - JG-SS OR 7-5-11 SS

