

27 SECTION 14 TOWN 06 RANGE

# ADAMS COUNTY

COUNTY CORNER NO: 98

ROMPORTOL ID: 41406272000

## PUBLIC LAND SURVEY MONUMENT RECORD

TYPE OF MONUMENT: HARRISON  
ADAMS COUNTY COORDINATES, NAD 83 (2007)

N. 108330.465

E. 546947.805

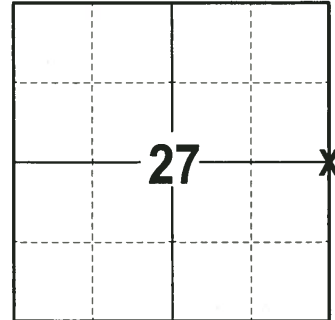
ELEVATION-      DATUM     

FIELD WORK DATE: 06/28/2017

### BASIS FOR MONUMENT LOCATION

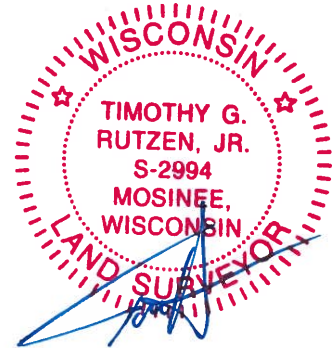
1975 - PLS 922 FOUND PK NAIL AT APPROXIMATE CENTERLINE INTERSECTION, EXCAVATED BY HAND AND FOUND A 1-1/4"X30" IRON PIPE 12" UNDER THE PK NAIL. PLACED HARRISON AT LOCATION OF PK NAIL AND IRON PIPE AND TIED OUT CORNER.

2017 - PLS 2994 FOUND HARRISON MONUMENT 8" BELOW THE ROAD SURFACE, 2 TIES AND 1 WITNESS. THE MONUMENT AGREES WITH THE EXISTING TIES AND WITNESS. ACCEPTED HARRISON AS THE CORNER LOCATION. SET 2 NEW TIES AND RE-MEASURED TO THE EXISTING TIES AND WITNESS.



**LOCATION**  
(INDICATE CORNER BY "X")

SEAL:



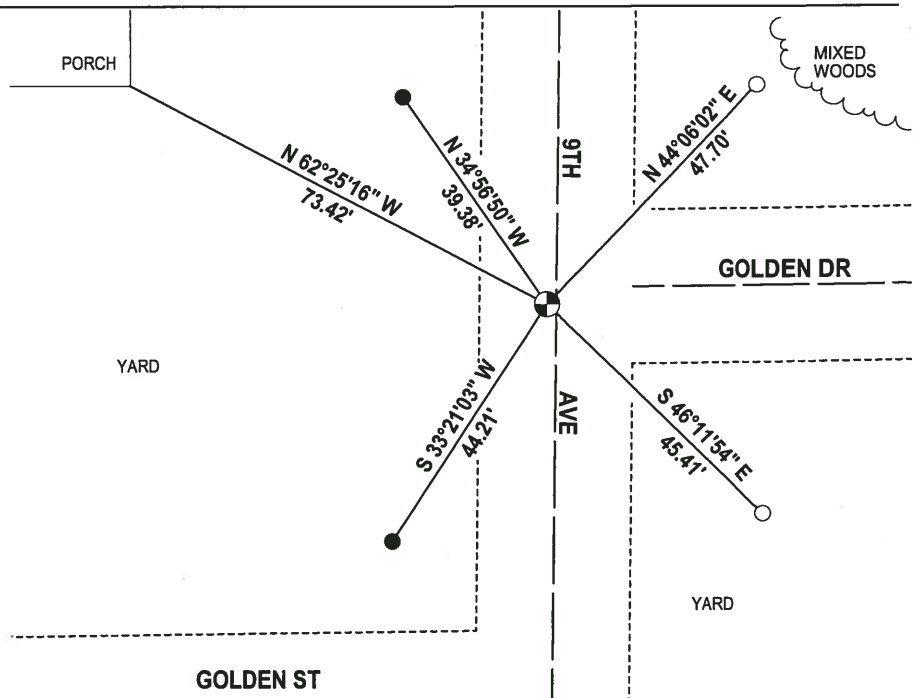
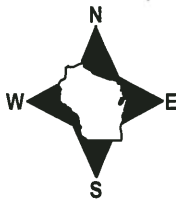
DATA SHOWN HERE ON THIS TIE SHEET IS CORRECT AND COMPLETE TO THE BEST OF MY KNOWLEDGE AND BELIEF.

PROFESSIONAL LAND SURVEYOR

DATE 7-14-17

### - TIE SKETCH -

NOTE: THE CORNER FALLS 1 1/2' WEST OF THE CENTERLINE OF 9TH AVE AND 3 1/2' SOUTH OF THE CENTERLINE OF GOLDEN DR.



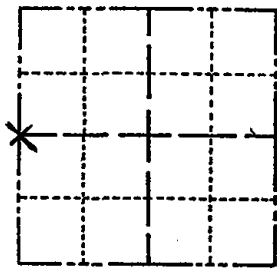
- 3/4" x 18" IRON REBAR SET, 1.50#/FT
- 3/4" IRON ROD FOUND
- ⊕ HARRISON FOUND

ADAMS COUNTY

Survey Monument Record

CORNER NO. 774  
SECTION 26  
TOWN 14 N  
RANGE 6 E

TYPE OF MONUMENT: 30" HARRISON MON.  
STATE PLANE COORDINATES: N \_\_\_\_\_  
E \_\_\_\_\_  
ELEVATION — M.S.L. DATUM: \_\_\_\_\_  
THETA ANGLE: \_\_\_\_\_  
FIELD BOOK: 501 PAGE 3



LOCATION (Indicated by 'X')

SEAL:

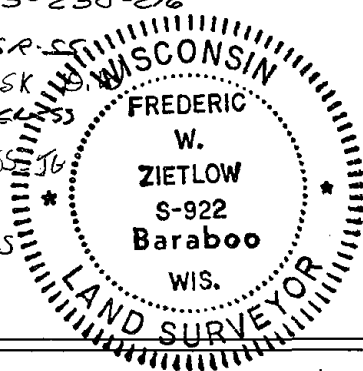
BASIS FOR MONUMENT LOCATION

(Use reverse side if necessary)

Show info such as: History of corner, with reference to Vol. and pg, dates, surveyor; exact description of monument replaced; if location computed, by taped or EDM traverse; landowner remarks, etc.

FOUND PK AT APPROXIMATE E & E INTERSECTION, EXCAVATED AT INTERSECTION BY HAND AND FOUND 1/4" x 30" IRON PIPE UNDER NAIL, DOWN 12", PLACED HARRISON OVER LOCATION OF PK NAIL AND IRON PIPE, USED AS GOV'T TIE IN MID-STATE SURVEYS FILE NO. S 22-60-30 & 33-250-216

- CORNER O.K. 10-9-76 GR-SS
- CORNER O.K. 10-16-81 SK
- " " 2-6-86 CL-SS
- " " 10-22-90 SS-J6
- 1-GONE, COR OK, 12/6/95
- 1-GONE 3 TIES LEFT 3-20-01 J6-SS
- OK, 11-10-06, J6-SS
- OK, 1-17-11 MS, SS



CERTIFIED CORRECT:

Frederic W. Zietlow  
Registered Land Surveyor

DATE: JUNE 13 1975

TIE SKETCH

(Show at least four ties)

