

25 SECTION 14 TOWN 06 RANGE

# ADAMS COUNTY

COUNTY CORNER NO: 100  
ROMPORTOL ID: 41406252000

## PUBLIC LAND SURVEY MONUMENT RECORD

TYPE OF MONUMENT: HARRISON (BROKEN-TOP)  
ADAMS COUNTY COORDINATES, NAD 83 (2007)

N. 108810.199

E. 557507.910

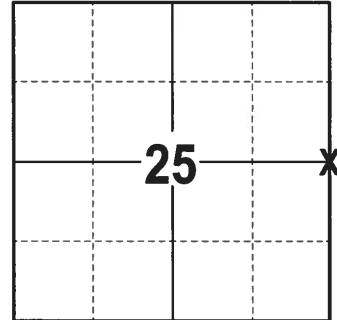
ELEVATION-      DATUM     

FIELD WORK DATE: 10/04/2017

### BASIS FOR MONUMENT LOCATION

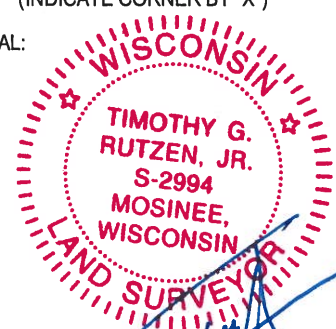
1975 - PLS 922 COULD NOT FIND EVIDENCE OF THE ORIGINAL CORNER. RE-ESTABLISHED THE CORNER BY THE SINGLE PROPORTIONATE METHOD BETWEEN THE NE CORNER OF SECTION 25, 14-6 AND THE SE CORNER OF SECTION 36, 14-6 VIA E.D.M TRAVERSE. CHECKED COUNTY SURVEY RECORDS FOR ANY OLD RE-SURVEYS AND NONE WERE ON FILE. SET A 30" HARRISON AT THE CORNER LOCATION AND TIED OUT.

2017 - PLS 2994 FOUND A HARRISON MONUMENT WITH A BROKEN-TOP 12" BELOW THE SURFACE, 1 TIE AND 1 PROPERTY IRON. THE MONUMENT AGREES WITH THE EXISTING TIE AND PROPERTY IRON. ACCEPTED THE HARRISON MONUMENT WITH A BROKEN-TOP AS THE CORNER LOCATION. SET 2 NEW TIES AND RE-MEASURED TO THE TIES AND PROPERTY IRON.



**LOCATION**  
(INDICATE CORNER BY "X")

SEAL:

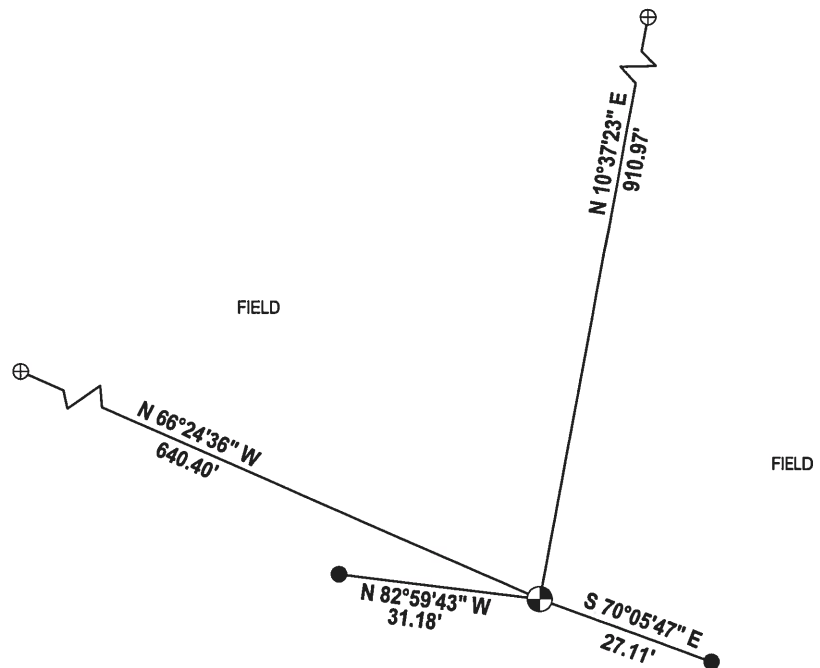
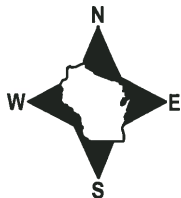


DATA SHOWN HERE ON THIS TIE SHEET IS CORRECT AND COMPLETE TO THE BEST OF MY KNOWLEDGE AND BELIEF.

PROFESSIONAL LAND SURVEYOR

DATE 11-15-17

### - TIE SKETCH -



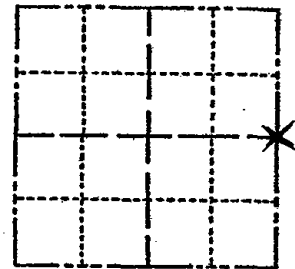
- 3/4" x 18" IRON REBAR SET, 1.50#/FT
- ⊕ 3/4" IRON ROD FOUND
- ⊙ HARRISON BROKEN-TOP FOUND

# ADAMS COUNTY

## Survey Monument Record

TYPE OF MONUMENT: 30" HARRISON  
 STATE PLANE COORDINATES: N \_\_\_\_\_  
 E \_\_\_\_\_  
 ELEVATION — M.S.L. DATUM: \_\_\_\_\_  
 THETA ANGLE: \_\_\_\_\_  
 FIELD BOOK: \_\_\_\_\_ PAGE \_\_\_\_\_

CORNER NO. 885  
 SECTION 25  
 TOWN 14N  
 RANGE 6E



LOCATION  
(Indicated by 'X')

### BASIS FOR MONUMENT LOCATION

(Use reverse side if necessary)

Show info such as: History of corner, with reference to Vol. and pg, dates, surveyor; exact description of monument replaced; if location computed, by taped or EDM traverse; landowner remarks, etc.

COULD NOT FIND EVIDENCE OF ORIGINAL CORNER

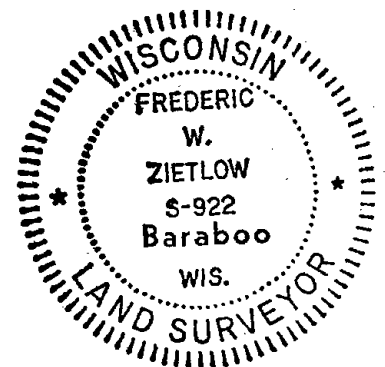
THIS CORNER WAS RE-ESTABLISHED

BY THE SINGLE PROPORTIONATE METHOD BETWEEN KNOWN CORNERS, BEING THE NE COR. OF SEC. 25 14-6 AND THE SE COR. OF SEC. 36 14-6 VIA E.D.M. TRAVERSE. CHECKED COUNTY SURVEY RECORDS FOR OLD RESURVEYS AND NONE WERE ON FILE.

CORNER O.K. 10-9-76 GR-SS  
 " " 3-26-83 JR-SS

OAK TREE STILL VISIBLE, COMPLETE AREA UNDER CULTIVATION.  
 " " 7-24-91 JG-SS  
 " " 4-25-96 JG-SS  
 " " 3-7-02 JG  
 (SEE TIE SHEET 6-26-98 SH. EC ATTACHED)  
 " " 1-23-06-JG

SEAL:



CERTIFIED CORRECT:

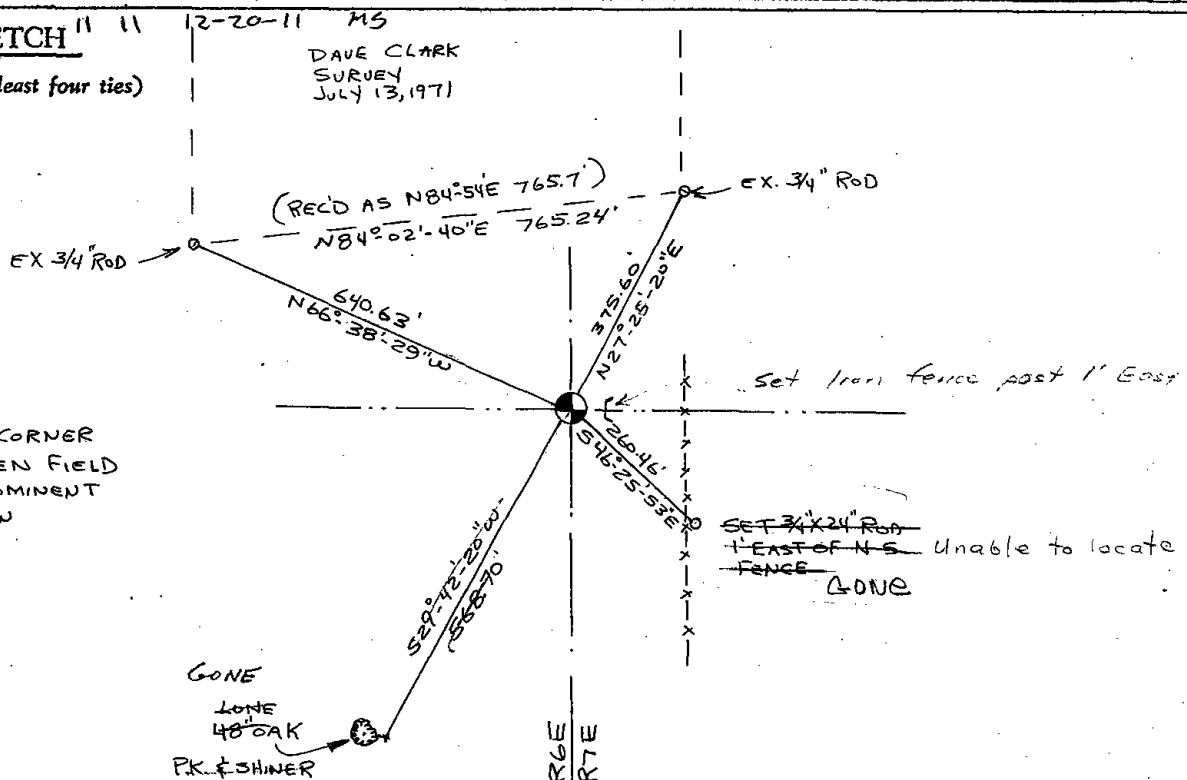
*Frederic W. Zietlow*

Registered Land Surveyor

DATE: Nov. 19, 1975

### TIE SKETCH

(Show at least four ties)



NOTE: THIS CORNER FALLS IN OPEN FIELD 22' E. OF PROMINENT DEAD FURROW

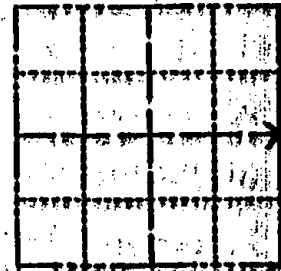


# ADAMS COUNTY

## Survey Monument Record

TYPE OF MONUMENT; 30" HARRISON  
 STATE PLANE COORDINATES; N \_\_\_\_\_  
 E \_\_\_\_\_  
 ELEVATION — M.S.L. DATUM; \_\_\_\_\_  
 THETA ANGLE; \_\_\_\_\_  
 FIELD BOOK; \_\_\_\_\_ PAGE \_\_\_\_\_

CORNER NO. 893  
 SECTION 25  
 TOWN 14N  
 RANGE 6E



LOCATION  
(Indicated by 'X')

SEAL:



CERTIFIED CORRECT:

*Frederick W. Zietlow*

Registered Land Surveyor

DATE: Nov. 19, 1975

### BASIS FOR MONUMENT LOCATION

(Use reverse side if necessary)

Show info such as: History of corner, with reference to Vol. and pg. dates, surveyor; exact description of monument replaced; if location computed, by taped or EDM traverse; landowner remarks, etc.

COULD NOT FIND EVIDENCE OF ORIGINAL CORNER  
 THIS CORNER WAS RE-ESTABLISHED

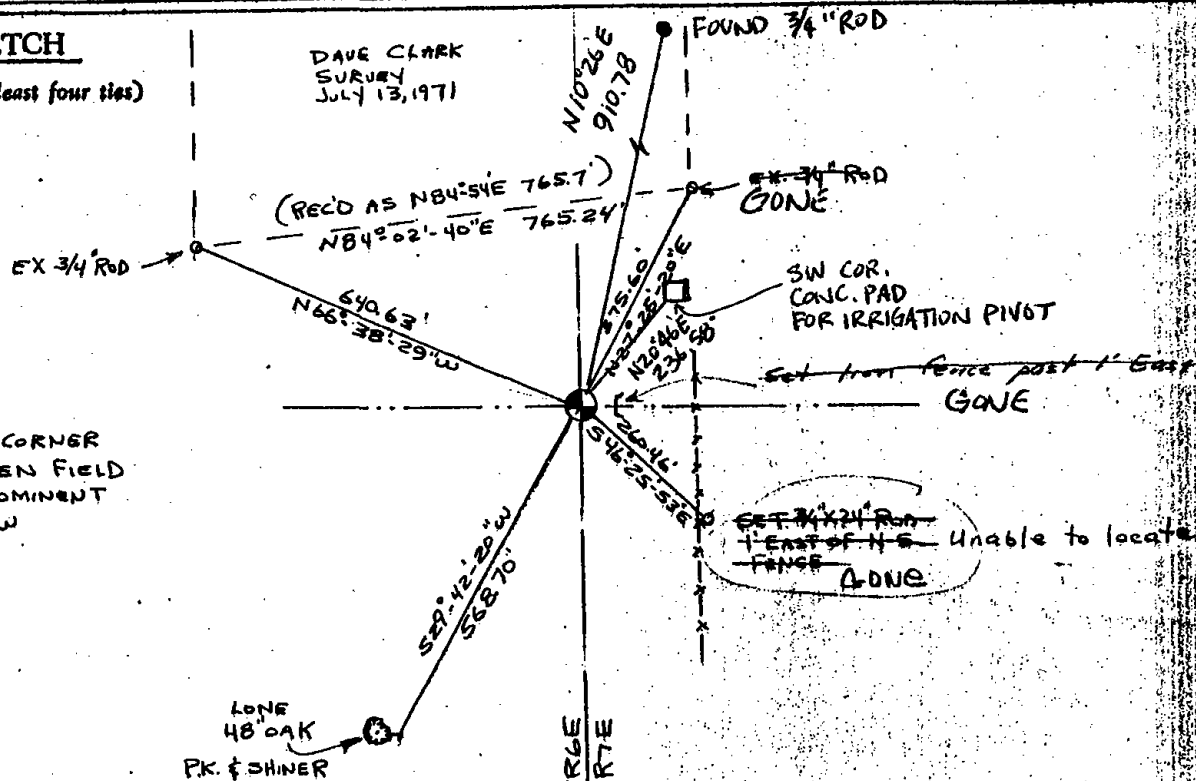
BY THE SINGLE PROPORTIONATE  
 METHOD BETWEEN KNOWN CORNERS,  
 BEING THE NE COR. OF SEC. 25 14-6  
 AND THE SE COR. OF SEC. 36 14-6  
 VIA E.D.M. TRAVERSE. CHECKED COUNTY  
 SURVEY RECORDS FOR OLD RESURVEYS  
 AND NONE WERE ON FILE.

CORNER O.K. 10-7-76 GR-SS  
 " " 3-26-86 GR-SS

OAK TREE STILL VISIBLE, COMPLETE AREA  
 UNDER CULTIVATION. 7-24-91 JG-SS  
 CORNER O.K./NEW TIES 6-26-98 SH-EC

### TIE SKETCH

(Show at least four ties)



NOTE: THIS CORNER  
 FALLS IN OPEN FIELD  
 22' E. OF PROMINENT  
 DEAD FURROW