

PUBLIC LAND SURVEY MONUMENT RECORD

TYPE OF MONUMENT: **2-3/8" O.D. IRON PIPE W/ALUMINUM CAP (MEANDER CORNER)**
 ADAMS COUNTY COORDINATES, NAD 83 (2007)

N. 105418.489

E. 539624.486

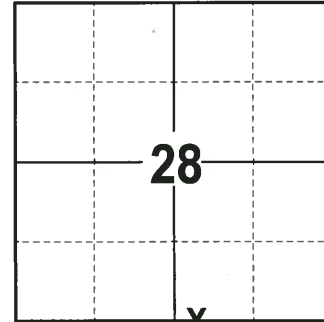
ELEVATION- _____ DATUM _____

FIELD WORK DATE: 07/12/2017

BASIS FOR MONUMENT LOCATION

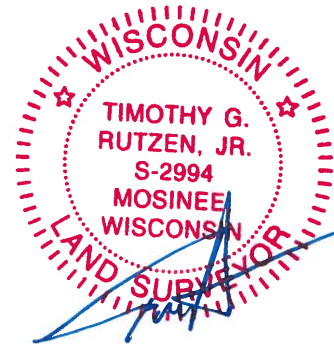
1979 - PLS 1478 FOUND LIVE AND HEALTHY ORIGINAL BEARING TREE (18" NORWAY PINE) AND SMALL PILE OF STONES AT THE CORRECT DISTANCE AND BEARING. THIS TREE IS RECORDED IN THE COPY OF TH ORIGINAL NOTES, ON PAGE 208, IN THE OFFICE OF ADAMS COUNTY SURVEYOR. RECORDED AS 30.76 CHAINS FROM THE SE CORNER OF SECTION 28. PINE 10" N 45° E 14 LINKS. VERIFIED LOCATION BY TRAVERSE TO RECORDED MONUMENTS AT THE SE CORNER OF SECTION 28 AND THE 1/16TH CORNER AT THE SW CORNER OF THE SE/SE OF SECTION 28-14-6. SET 2-3/8" O.D. X 30" IRON PIPE AT CORNER AND TIED OUT.

2017 - PLS 2994 FOUND 2-3/8" O.D. IRON PIPE W/ALUMINUM CAP 12" ABOVE THE GROUND SURFACE AND 3 WITNESSES. THE MONUMENT AGREES WITH THE EXISTING WITNESSES. ACCEPTED 2-3/8" O.D. IRON PIPE AS THE CORNER LOCATION. SET 3 NEW TIES AND RE-MEASURED TO THE EXISTING WITNESSES.



LOCATION
 (INDICATE CORNER BY "X")

SEAL:



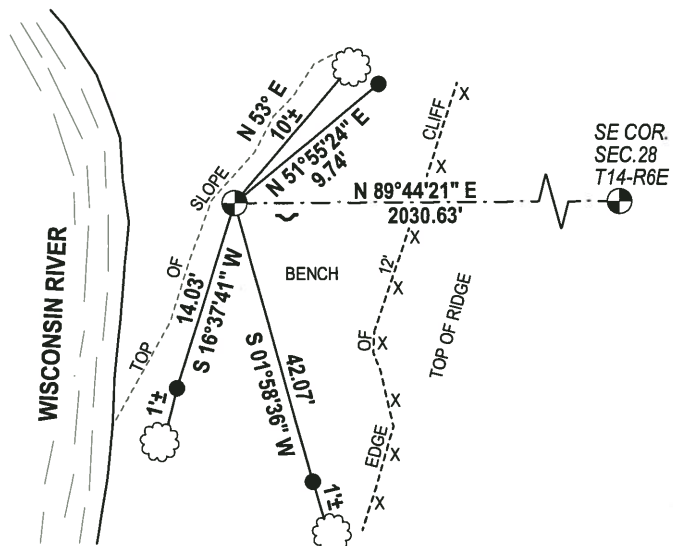
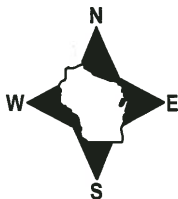
DATA SHOWN HERE ON THIS TIE SHEET IS CORRECT AND COMPLETE TO THE BEST OF MY KNOWLEDGE AND BELIEF.

PROFESSIONAL LAND SURVEYOR

DATE 7-14-17

- TIE SKETCH

NOTE: THE CORNER FALLS 30"± WEST OF THE EDGE OF SLOPE.

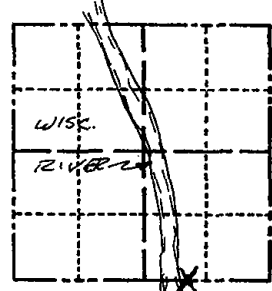


- 3/4" x 18" IRON REBAR SET, 1.50#/FT
- ⊕ 2-3/8" O.D. IRON PIPE W/ALUMINUM CAP FOUND
- ~ STEEL FENCE POST
- ☼ WITNESS TREE FOUND

Government Land Corner Certificate

ADAMS County
 TYPE OF MONUMENT: 2" X 30" IRON PIPE
 STATE PLANE COORDINATES: N _____
 E _____
 ELEVATION — M.S.L. DATUM: _____
 THETA ANGLE: _____
 FIELD BOOK: 83 PAGE 15
 DRAWN BY: G. RHINEHART

CORNER NO. 106
 SECTION 28
 TOWN 14
 RANGE 6



LOCATION
(Indicated by 'X')

SEAL:



DATA SHOWN HERE ON
CERTIFIED CORRECT:

Gregory P. Rhinehart
Registered Land Surveyor

DATE: 12/19/79

BASIS FOR MONUMENT LOCATION

Show info such as: History of corner, with reference to Vol. and pg., dates, surveyor; exact description of monument replaced; if location computed, by taped or EDM traverse; landowner remarks, etc. (Use reverse side if necessary)

Found live and healthy original bearing tree (18" Norway Pine) and small pile of stone at correct distance and bearing. This tree is recorded in the copy of the original notes, on page 208, in the office of Adams County Surveyor.

Recorded as 30.76 chains from the SE corner of Section 28. Pine 10" N45°E 14 links.

Location of corner verified by traverse to record monuments at the Se corner of 28 and the 1/16th corner at the SW cor. of the SESE Section 28-14-6.

*62-55-86
2-12-86
2-0K*

ALL OK 10-22-90 JG-SS

TIE SKETCH

*OK 4-24-96 JG-SS
OK 3-12-02-GR ALL OK, 11-28-06, JG-SS*

Show at least four ties, also fence lines, roads, topo, size and type of witness trees and if off road - best way to arrive at corner.

