

PUBLIC LAND SURVEY MONUMENT RECORD

TYPE OF MONUMENT: HARRISON
ADAMS COUNTY COORDINATES, NAD 83 (2007)

N. 102785.384

E. 541597.753

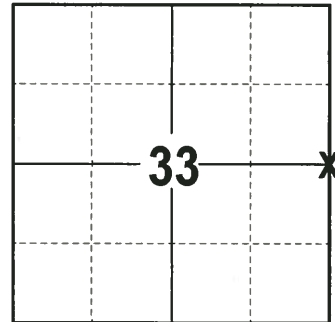
ELEVATION- --- DATUM ---

FIELD WORK DATE: 07/05/2017

BASIS FOR MONUMENT LOCATION

1976 - PLS 922 CHECKED ADAMS COUNTY SURVEY RECORDS FOR RESURVEYS AND FOUND NONE. FOUND A 2"x24" IRON PIPE AT THE FENCE CORNER AND MONUMENTED SAME. POSITION FIT TRANSIT-TAPE TRAVERSE OF THE SECTION WELL. SET HARRISON MONUMENT AND 4 WITNESSES.

2017 - PLS 2994 FOUND HARRISON MONUMENT 6" ABOVE THE SURFACE AND 2 WITNESSES. THE MONUMENT AGREES WITH THE EXISTING WITNESSES. ACCEPTED HARRISON AS THE CORNER LOCATION. SET 4 NEW TIES AND RE-MEASURED TO THE EXISTING WITNESSES.



LOCATION
(INDICATE CORNER BY "X")

SEAL:



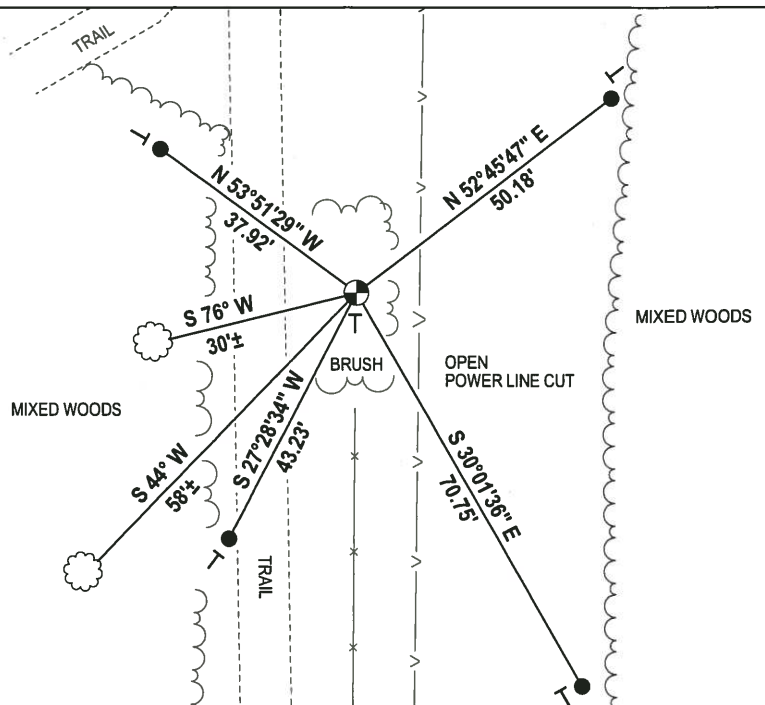
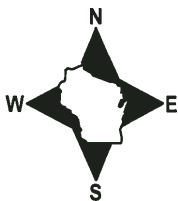
DATA SHOWN HERE ON THIS TIE SHEET IS CORRECT AND COMPLETE TO THE BEST OF MY KNOWLEDGE AND BELIEF.

PROFESSIONAL LAND SURVEYOR

DATE 7-14-17

- TIE SKETCH

NOTE: THE CORNER FALLS 15± EAST OF THE CENTERLINE OF THE TRAIL.



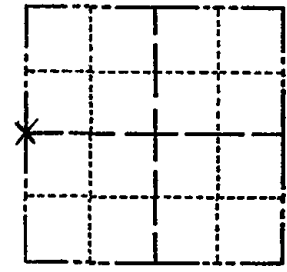
- 3/4" x 18" IRON REBAR SET, 1.50#/FT
- HARRISON FOUND
- VINYL "T" POST
- ☁ WITNESS TREE FOUND

ADAMS COUNTY

CORNER NO. 916
SECTION 34
TOWN 14 N
RANGE 6 E

Survey Monument Record

TYPE OF MONUMENT: 30" HARRISON
STATE PLANE COORDINATES: N _____
E _____
ELEVATION — M.S.L. DATUM: _____
THETA ANGLE: _____
FIELD BOOK: _____ PAGE _____



LOCATION
(Indicated by 'X')

BASIS FOR MONUMENT LOCATION

(Use reverse side if necessary)

Show info such as: History of corner, with reference to Vol. and pg, dates, surveyor; exact description of monument replaced; if location computed, by taped or EDM traverse; landowner remarks, etc.

CHECKED ADAMS COUNTY SURVEY RECORDS FOR RESURVEYS & NONE WERE ON FILE. FOUND A 2" X 24" IRON PIPE AT THE FENCE CORNER AND MONUMENTED SAME. FIT TRANSIT-TAPE TRAVERSE OF SECTION GOOD.

- CORNER OK 12-15-81 SK-BW
- " " 2-19-86 GR-SS
- ALL OK 10-22-90 SS-JG
- 2-GONE, 2-NEWTIES 10/30/96 JG-SS
- ALL OK 3-07-01 JG-MM
- ALL OK, 11-27-06 - JG-SS

SEAL:

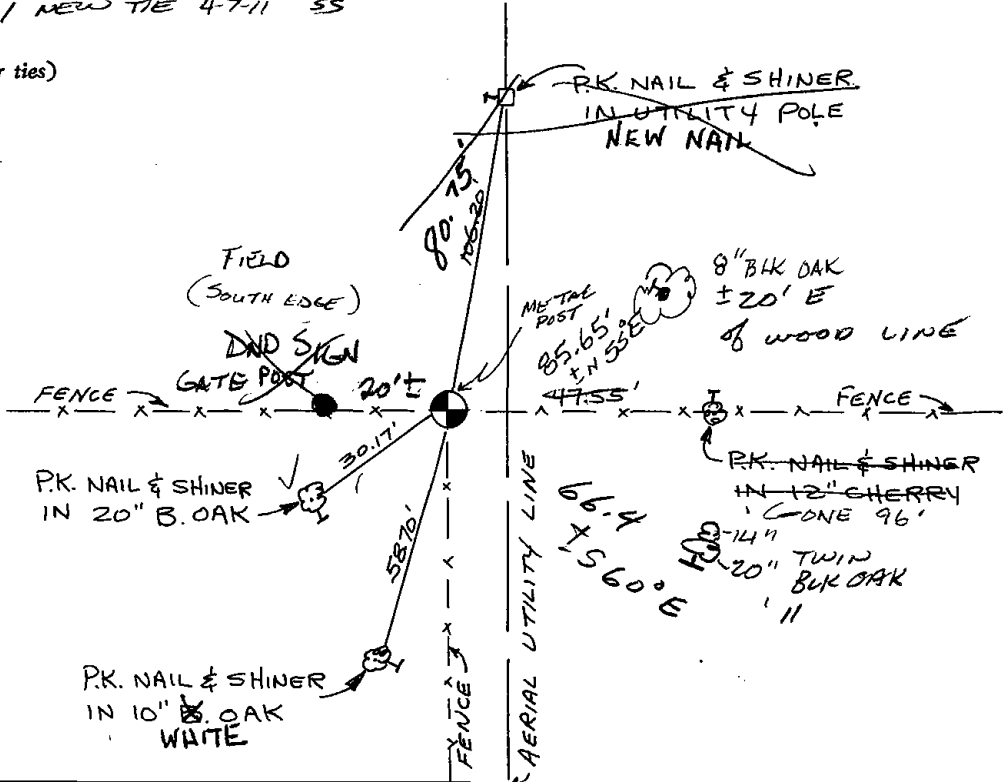


CERTIFIED CORRECT:

Frederic W. Zietlow
Registered Land Surveyor
DATE: MARCH 25, 1976

TIE SKETCH / NEW TIE 4-7-11 SS

(Show at least four ties)



ORIG BT TOP
HEADER CORNER
BETWEEN 35.28 EAST
BANK WISC RIVER
T14-N R6E

