

34
SECTION

14
TOWN

06
RANGE

ADAMS COUNTY

COUNTY CORNER NO: 128

ROMPORTOL ID: 41406340020

PUBLIC LAND SURVEY MONUMENT RECORD

TYPE OF MONUMENT: HARRISON
ADAMS COUNTY COORDINATES, NAD 83 (2007)

N. 100281.659

E. 544185.203

ELEVATION- - - DATUM - -

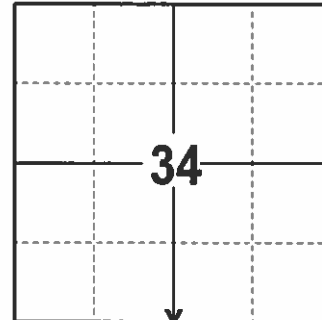
FIELD WORK DATE: 2/28/2017

BASIS FOR MONUMENT LOCATION

1974- PLS 878 REPLACED AN EXISTING 1/2" X 1 3/4" X 40" STRAP IRON WITH HARRISON. STRAP IRON SET BY COLUMBIA COUNTY SURVEYOR C.E. CORNING IN 1920. SEE COLUMBIA COUNTY SURVEY RECORDS BLUE PRINT NO. 162, FIT TRANSIT-TAPE TRAVERSE OF SECTION GOOD.

1998- PLS 1321 FOUND A HARRISON, AND SET 4 TIES.

2017 - PLS 2994 FOUND A HARRISON 3" ABOVE THE SURFACE, AND 4 EXISTING TIES. THE HARRISON AGREES WITH TIES. ACCEPTED HARRISON AND REMEASURED TO THE 4 EXISTING TIES.



LOCATION
(INDICATE CORNER BY "X")

SEAL:



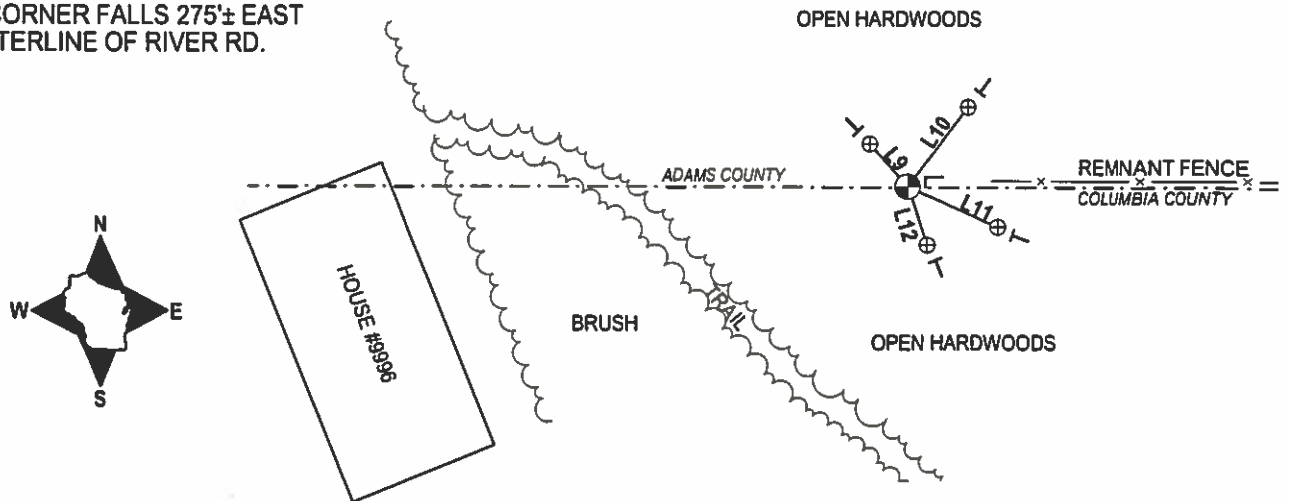
DATA SHOWN HERE ON THIS TIE SHEET IS CORRECT AND COMPLETE TO THE BEST OF MY KNOWLEDGE AND BELIEF.

PROFESSIONAL LAND SURVEYOR

DATE 3/15/17

- TIE SKETCH

NOTE: THE CORNER FALLS 275'± EAST OF THE CENTERLINE OF RIVER RD.



- ⊕ 3/4" IRON ROD W/ALUMINUM CAP FOUND
- ⊙ HARRISON FOUND
- └ VINYL "T" POST
- └ FIBERGLASS "T" POST

LINE	BEARING	DISTANCE
L9	N 41°37'57" W	14.84'
L10	N 37°24'31" E	26.00'
L11	S 66°00'07" E	25.77'
L12	S 18°14'20" E	15.98'

ADAMS COUNTY

Survey Monument Record

TYPE OF MONUMENT: 30" HARRISON MON.

STATE PLANE COORDINATES: N _____

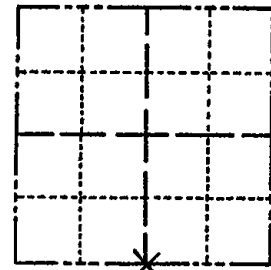
E _____

ELEVATION — M.S.L. DATUM: _____

THETA ANGLE: _____

FIELD BOOK: _____ PAGE _____

CORNER NO. 128
 SECTION 34
 TOWN 14 N.
 RANGE 6 E.



LOCATION
(Indicated by 'X')

BASIS FOR MONUMENT LOCATION

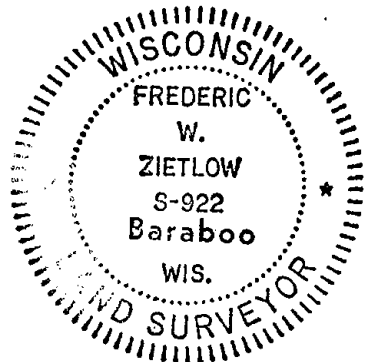
(Use reverse side if necessary)

Show info such as: History of corner, with reference to Vol. and pg. dates, surveyor; exact description of monument replaced; if location computed, by taped or EDM traverse; landowner remarks, etc.

SEAL:

Found 40" of 1/2" x 1 3/4" STRAP IRON
 SET BY COLUMBIA COUNTY SURVEYOR
 C.E. CORNING IN 1920. SEE COLUMBIA
 COUNTY SURVEY RECORDS BLUE PRINT #162
 FIT TRANSIT-TAPE TRAVERSE OF SECTION
 GOOD.

CORNER O.K 12-14-81 SK-DW
 " O.K 2-13-86 GR-SS
 ALL OK 10-22-90 JG-SS
 OK 3-30-95 MC
 ALL OK 10/30/96 JG-SS



CERTIFIED CORRECT:

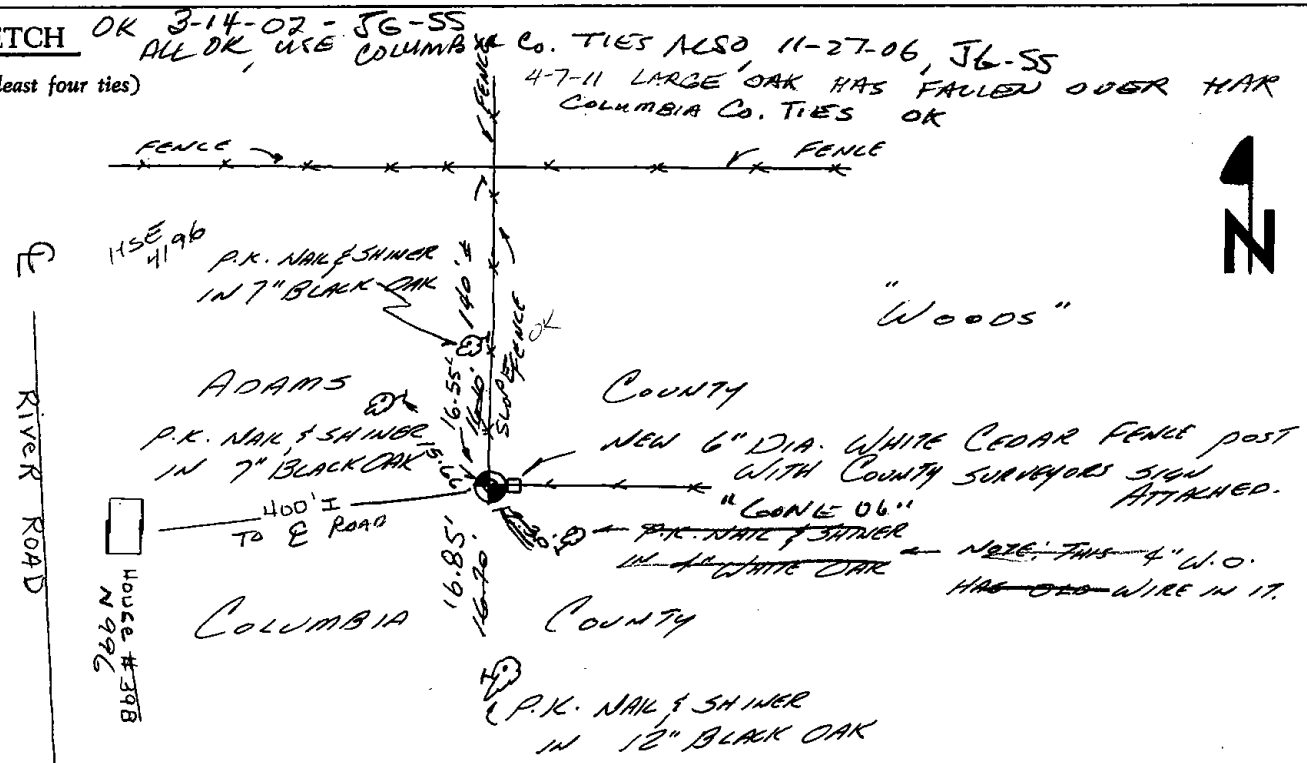
Frederic W. Zietlow

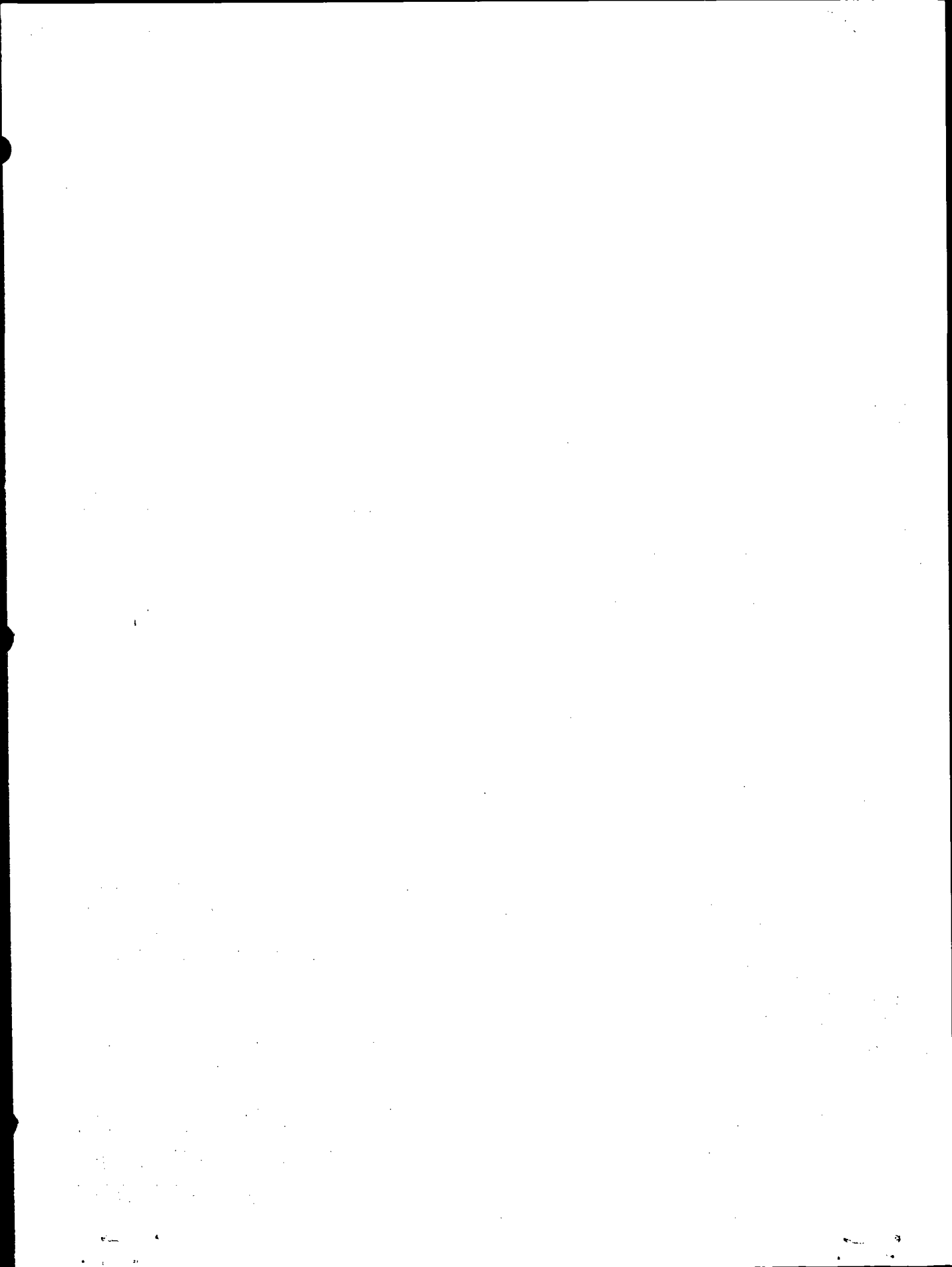
Registered Land Surveyor

DATE: MARCH 18, 1977

TIE SKETCH

(Show at least four ties)





U. S. PUBLIC LAND SURVEY MONUMENT RECORD

COLUMBIA COUNTY

INSTRUCTIONS: This record shall show the location of the corner and shall include all of the following nine elements (a through i).

(a) Identify the corner by reference to the U.S. public land survey system.

○ = Corner monument restored.

CORNER MONUMENT RESTORED WAS THE N1/4 CORNER OF SECTION 3 T. 13N., R. 6E., TOWN OF NEWPORT, COL. CO.

CORNER HISTORY:

ORIGIN:

BY SURVEYOR(S) _____

DATE: _____

PERPETUATION: (PAGE, DATE & SURVEYOR)

VOL. I SEE PREVIOUS TIE SHEET

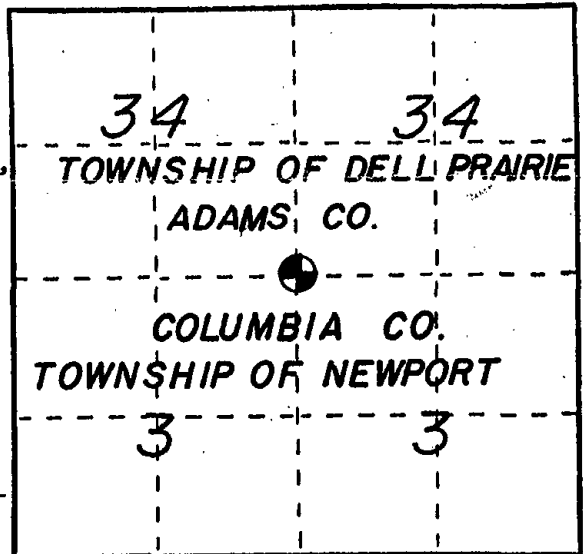
VOL. II _____

B. P. R. _____

FIELD BOOK _____

RECENT SURVEYS: (REF., DATE & SURVEYOR)

TIE SHEET BY FREDERIC W. ZIETLOW RLS DATED 3-18-77



(b) Describe any record evidence, monument evidence, occupational evidence, testimonial evidence or any other material evidence you considered, and whether the monument was found or placed.

EVIDENCE FOUND:

RECORD _____, MONUMENT x, OCCUPATIONAL _____, TESTIMONIAL _____, OTHER _____.

ORIGINAL CORNER MONUMENT LOCATION WAS N/A FOUND.

DESCRIPTION: FOUND ADAMS COUNTY MONUMENT AND SET FOUR (4)

ADDITIONAL WITNESS MONUMENTS

COLUMBIA COUNTY ALUMINUM WAS SET IN PLACE. (FOR ANY ADD'L INFO SEE BACK)

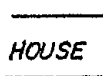
(c) In the plan view drawing below, provide reference ties to at least 4 witness monuments, or, if the location is within a municipality, to at least 2 witness monuments. (Witness monuments shall be made of concrete, natural stone, iron or other equally durable material.) Describe witness monuments.

(d) Show a plan view drawing depicting the relevant monuments and reference ties which is sufficient in detail to enable accurate relocation of the corner monument if the corner monument is disturbed. Indicate north.

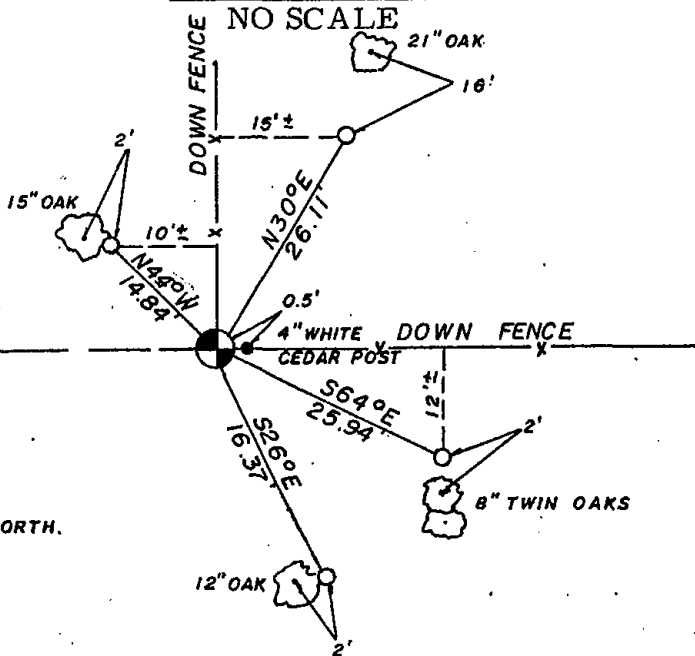
- ⊙ - COLUMBIA COUNTY ALUM. MON. SET
- - 3/4" x 30" REBAR W/ALUM. WITNESS CAP SET
- ⊙ (OTHER) HARRISON MON. FND.

N _____
E _____

RIVER RD.



400'±



NOTE: ALL BEARINGS SHOWN ARE REFERENCED TO MAGNETIC NORTH.

DRAFTED BY CAE DATE 10/13/97 CORNER REF. A-15

A-15

(e) Describe any material discrepancy between the location of the corner as restored or reestablished and the location of that corner as previously restored or reestablished by distance and direction. Show the discrepancy on the plan view drawing under (d), above. Show the distances between the corner as previously restored or reestablished and (1) the corner as restored or reestablished, and (2) to at least 2 of the witness monuments shown on the drawing in (d), above.

FOUND: _____

SET BY: _____

JOB REF: _____

BEARS _____, _____ FROM CORNER MON. SET.

(f) Was the corner restored through acceptance of (1) an obliterated evidence location, or, (2) a found perpetuated location?

THIS CORNER WAS RESTORED THROUGH _____ n/a _____ LOCATION.

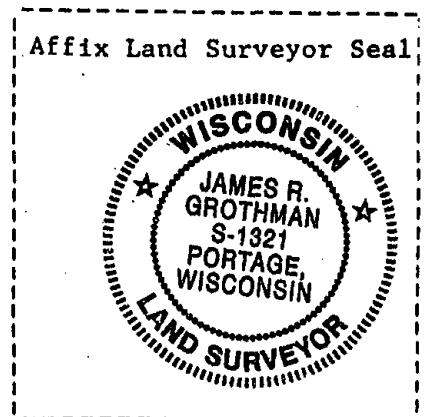
(g&h) Was the corner reestablished through lost corner proportionate methods? If so, show the method, including the directions and distances to other public land survey corners used as evidence or used for proportioning in determining the corner location?

NO SCALE

BEARINGS REFERENCED TO _____
DISTANCES ARE: _____ GRID _____ GROUND
GRID FACTOR: _____



picture taken; yes no



(1) James R. Grothman
(type or print name) certify that the corner location shown on this record was determined by me or under my direction and control and that this U.S. Public Land Survey Monument Record is correct and complete to the best of my knowledge and belief.

James R. Grothman
Signature Date 2.02.98