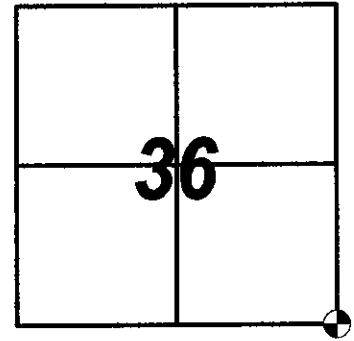


ADAMS COUNTY

CERTIFIED U.S. PUBLIC LAND SURVEY MONUMENT RECORD

COUNTY CORNER NO. 133



NORTHING = 100,907.24
EASTING = 557,458.84

This record shall show the location of the corner and shall include all of the following elements (a-h)

- (a) Identify the corner by the U.S. public land survey system
Corner monument restored:

**THE SOUTHEAST CORNER OF SECTION 36, T 14 N, R 06 E,
ADAMS COUNTY, WISCONSIN.**

- (b) Describe any record evidence, monument evidence, occupational evidence, testimonial evidence or any other material evidence considered and whether the monument was found or placed.

**I FOUND A SURVEY NAIL IN THE SURFACE AND 4 TIE MONUMENTS
AS SHOWN ON RUTZEN 2017 RECORD.
AFTER WISDOT RESURFACING PROJECT 6566-00-72,
I SET A 3" BERNTSEN SURVEY MARKER SPIKE AT THE CORNER.**

- (c) Draft a corner location sketch showing ties to at least 4 witness monuments made of durable lasting material.

- (d) The plan view sketch shall depict sufficient detail to enable accurate relocation of the corner monument if disturbed.

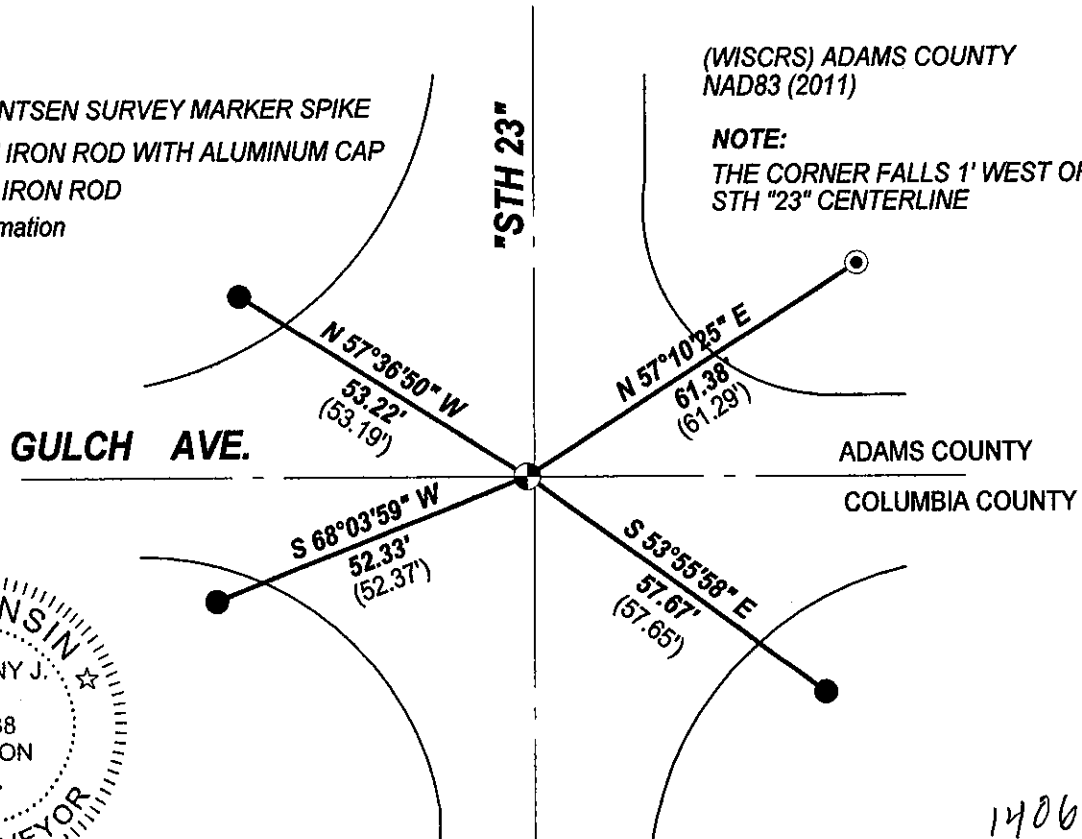
Bearings are Referenced to the Adams
County Coordinate System

North

Scale: One Inch = Thirty Feet

LEGEND:

- = SET 3" BERNTSEN SURVEY MARKER SPIKE
- = FOUND 3/4" IRON ROD WITH ALUMINUM CAP
- = FOUND 3/4" IRON ROD
- () = Record Information



**ADAMS COUNTY
CERTIFIED U.S. PUBLIC LAND SURVEY
MONUMENT RECORD**

(e) Describe any material discrepancy between the location of the corner as restored or reestablished and the location of that corner as previously restored or reestablished by distance and direction. Show the discrepancy on the plan view drawing in (d). Show the distances between the corner as previously restored or reestablished and (1) the corner as restored or reestablished, and (2) to at least 4 of the witness monuments shown on the drawing in (d).

None.

(f) Was the corner restored through acceptance of (1) an obliterated evidence location, or (2) a found perpetuated location ?

This corner was accepted at its found location

(g) Was the corner reestablished through proportionate methods ? If so, show the method, including the directions and distances to other public land survey corners used as evidence or used for proportioning in determining the corner location.

No.

(h) I, Anthony J. Alt

hereby certify that the corner location shown on this record was determined by me or under my direction and control and that this U.S. public land survey monument record is correct and complete to the best of my knowledge and belief.

Anthony J. Alt 6-25-22

