

PUBLIC LAND SURVEY MONUMENT RECORD

TYPE OF MONUMENT: 2-3/8" O.D. IRON PIPE W/ALUMINUM CAP (MEANDER CORNER)
 ADAMS COUNTY COORDINATES, NAD 83 (2007)

N. 111735.666

E. 536427.184

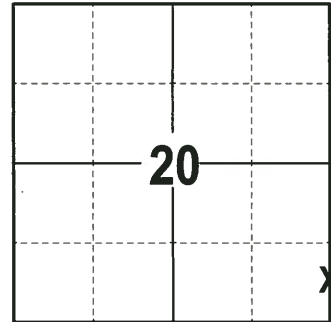
ELEVATION- _____ DATUM _____

FIELD WORK DATE: 07/11/2017

BASIS FOR MONUMENT LOCATION

1979 - PLS 1478 FOUND DEAD STUB OF ORIGINAL BEARING TREE. SET CORNER AT RECORDED DISTANCE AND BEARING. LOCATION OF CORNER WAS VERIFIED BY EDM/T2 TRAVERSE TO THE NW AND W1/4 CORNERS OF SECTION 21-14-6. THE BLAZE PORTION OF THIS BEARING TREE STUB IS ON DISPLAY AT THE OFFICES OF KIEDROWSKI AT WISCONSIN RAPIDS, WISCONSIN.

2017 - PLS 2994 FOUND 2-3/8" O.D. IRON PIPE WITH ALUMINUM CAP 6" ABOVE THE GROUND SURFACE. AND FOUND 4 WITNESSES AND 1 TIE. THE MONUMENT AGREES WITH THE EXISTING WITNESSES AND TIE. ACCEPTED 2-3/8" O.D. IRON PIPE WITH ALUMINUM CAP AS THE CORNER LOCATION. SET 4 NEW TIES AND RE-MEASURED TO THE EXISTING WITNESSES AND TIE.



LOCATION
 (INDICATE CORNER BY "X")

SEAL:



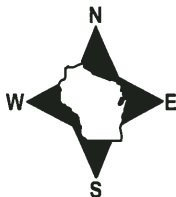
DATA SHOWN HERE ON THIS TIE SHEET IS CORRECT AND COMPLETE TO THE BEST OF MY KNOWLEDGE AND BELIEF.

PROFESSIONAL LAND SURVEYOR

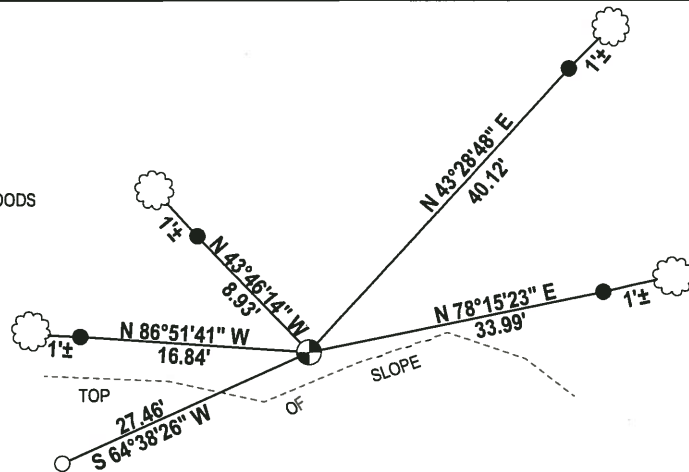
DATE 7-14-17

- TIE SKETCH -

NOTE: THE CORNER FALLS 5'± NORTH OF THE TOP OF SLOPE.



OPEN HARDWOODS



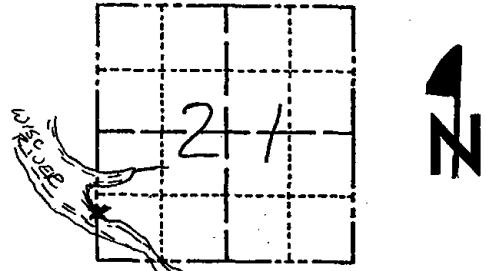
- 3/4" x 18" IRON REBAR SET, 1.50#/FT
- 1-1/4" O.D. IRON PIPE FOUND
- ⊙ 2-3/8" O.D. IRON PIPE W/ALUMINUM CAP FOUND
- ☁ WITNESS TREE FOUND

WISCONSIN RIVER

Government Land Corner Certificate

ADAMS County
 TYPE OF MONUMENT: 2" X 30" IRON PIPE / ALUM PLUG
 STATE PLANE COORDINATES: N _____
 E _____
 ELEVATION — M.S.L. DATUM: _____
 THETA ANGLE: _____
 FIELD BOOK: B3 PAGE 19
 DRAWN BY: G. RHINEHART

CORNER NO. 134
 SECTION 21
 TOWN 14
 RANGE 6



LOCATION
 (Indicated by 'X')

BASIS FOR MONUMENT LOCATION

Show info such as: History of corner, with reference to Vol. and pg., dates, surveyor; exact description of monument replaced; if location computed, by taped or EDM traverse; landowner remarks, etc. (Use reverse side if necessary)

Found dead stub of original bearing tree and set corner at record distance and bearing.

Location of corner was verified by EDM/t2 traverse to the NW and NE Corners of Section 21-14-6.

The blaze portion of this bt stub is on display at the offices of Kiedrowski Eng. at Wisconsin Rapids, Wisconsin.

SEAL:



DATA SHOWN HERE ON CERTIFIED CORRECT:

Gregory P. Rhinehart
 Registered Land Surveyor

DATE: 12/19/79

TIE SKETCH

Show at least four ties, also fence lines, roads, topo, size and type of witness trees and if off road - best way to arrive at corner.

