

34
SECTION

15
TOWN

07
RANGE

ADAMS COUNTY

COUNTY CORNER NO: 129
ROMPORTOL ID: 41507340000

PUBLIC LAND SURVEY MONUMENT RECORD

TYPE OF MONUMENT: HARRISON
ADAMS COUNTY COORDINATES, NAD 83 (2007)

N. 132935.752

E. 578395.100

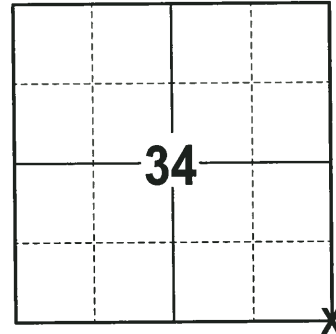
ELEVATION- _____ DATUM _____

FIELD WORK DATE: 11/01/2017

BASIS FOR MONUMENT LOCATION

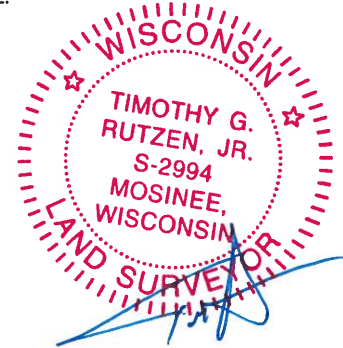
1981 - PLS 878 NOTED M.C. SMITH WAS HERE IN 1916, PER VOL 2, PAGE 26 OF THE COUNTY SURVEYOR RECORDS. PLS 878 COULD NOT RECONCILE SMITH'S DISTANCES WITH OLD POSSESSION LINES AND ORIGINAL GOVERNMENT SURVEY NOTES AND COULD NOT FIND ANY EVIDENCE OF PREVIOUS MONUMENTATION. PLS 878 SET THIS CORNER ON A STRAIGHT LINE BETWEEN THE NW CORNER OF SECTION 3 AND THE NE CORNER OF SECTION 2, AND HALF WAY BETWEEN AND TIED OUT.

2017 - PLS 2994 FOUND A HARRISON MONUMENT FLUSH WITH THE GROUND SURFACE AND 3 WITNESS TREES. THE MONUMENT AGREES WITH THE EXISTING WITNESS TREES. ACCEPTED THE HARRISON MONUMENT AS THE CORNER LOCATION. SET 4 NEW TIES AND MEASURED TO THE TIES AND WITNESS TREES.



LOCATION
(INDICATE CORNER BY "X")

SEAL:

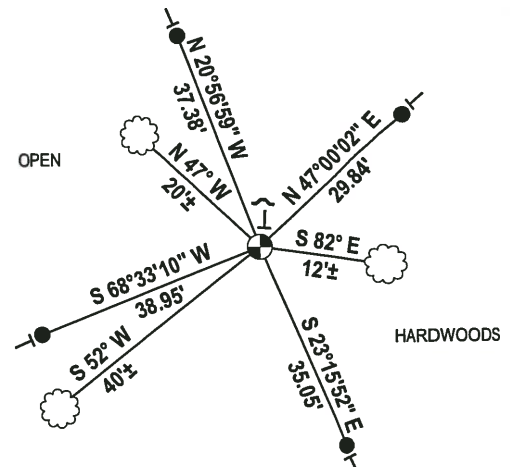
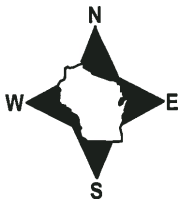


DATA SHOWN HERE ON THIS TIE SHEET IS CORRECT AND COMPLETE TO THE BEST OF MY KNOWLEDGE AND BELIEF.

PROFESSIONAL LAND SURVEYOR

DATE 12-21-17

- TIE SKETCH

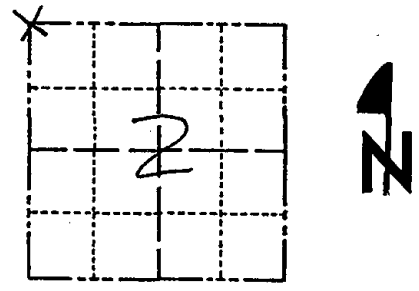


- 3/4" x 18" IRON REBAR SET, 1.50#/FT
- ⊕ HARRISON FOUND
- ✓ STEEL FENCE POST
- └ VINYL "T" POST
- ☁ WITNESS TREE FOUND

Government Land Corner Certificate

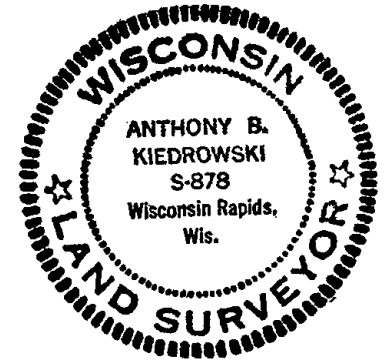
ADAMS County
 TYPE OF MONUMENT: _____
 STATE PLANE COORDINATES: N _____
 E _____
 ELEVATION — M.S.L. DATUM: _____
 THETA ANGLE: _____
 FIELD BOOK: 76 PAGE 109
 DRAWN BY: SB HAUMSCHILD

CORNER NO. 9
 SECTION 2
 TOWN 14
 RANGE 7



LOCATION
 (Indicated by 'X')

SEAL:



DATA SHOWN HERE ON
 CERTIFIED CORRECT:

Anthony B. Kiedrowski
 Registered Land Surveyor
 9/3/81
 DATE: _____

BASIS FOR MONUMENT LOCATION

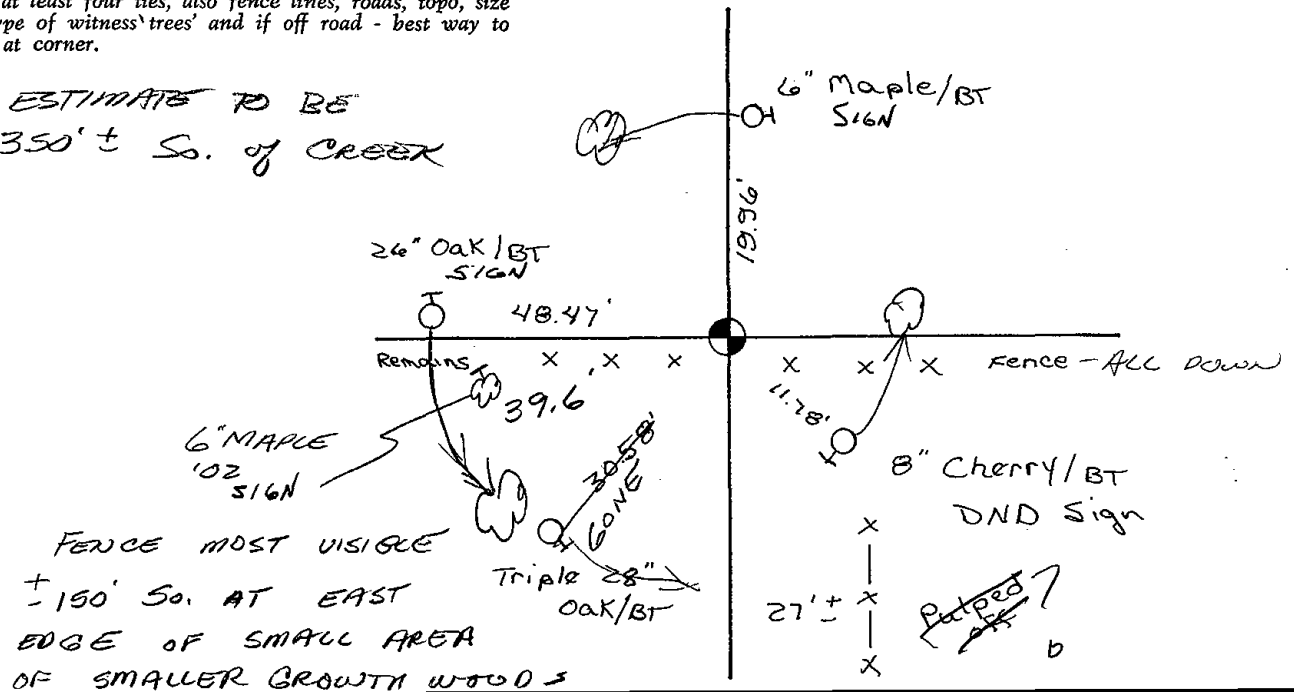
Show info such as: History of corner, with reference to Vol. and pg., dates, surveyor; exact description of monument replaced; if location computed, by taped or EDM traverse; landowner remarks, etc. (Use reverse side if necessary)

This corner is set on a straight line between the NW corner of section 3 and the NE corner of section 2, and half way between. M.C. Smith was here in 1916, per vol 2, page 26 of county surveyor records. I could not reconcile Smith's distances with old possession lines and original government survey notes. Could not find any evidence of previous monumentation.

TIE SKETCH

Show at least four ties, also fence lines, roads, topo, size and type of witness trees and if off road - best way to arrive at corner.

ESTIMATE TO BE
 350' ± So. of CREEK



FENCE MOST VISIBLE
 ± 150' So. AT EAST
 EDGE OF SMALL AREA
 OF SMALLER GROWTH WOODS

