

35
SECTION

15
TOWN

07
RANGE

ADAMS COUNTY

COUNTY CORNER NO: 130

ROMPORTOL ID: 41507350020

PUBLIC LAND SURVEY MONUMENT RECORD

TYPE OF MONUMENT: HARRISON
ADAMS COUNTY COORDINATES, NAD 83 (2007)

N. 132941.068

E. 581021.595

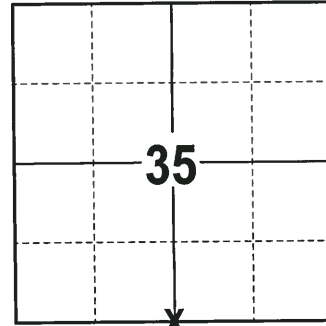
ELEVATION- _____ DATUM _____

FIELD WORK DATE: 11/01/2017

BASIS FOR MONUMENT LOCATION

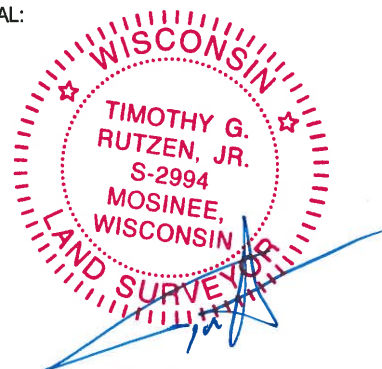
1981 - PLS 878 STATES M.C. SMITH WAS HERE IN 1916, PER VOL 2, PAGE 26 OF COUNTY SURVEYOR RECORDS. PLS 878 USED THE FENCE CORNER AS THE QUARTER CORNER, AFTER RUNNING ALL OF THE NORTH LINES OF SECTIONS 1, 2 AND 3. THIS CORNER IS ON A STRAIGHT LINE AND EQUIDISTANT BETWEEN SECTION CORNERS. PLS 878 NOTED M.C. SMITH CALLS FOR THE DISTANCES TO BE UNEQUAL, PLS 878 COULD NOT PRORATE THE M.C. SMITH DISTANCES AND COME CLOSE TO FITTING OLD POSSESSION LINES.

2017 - PLS 2994 FOUND A HARRISON MONUMENT FLUSH WITH THE SURFACE AND 4 WITNESS TREES. THE MONUMENT AGREES WITH THE EXISTING WITNESS TREES. ACCEPTED THE HARRISON MONUMENT AS THE CORNER LOCATION. SET 4 NEW TIES AND MEASURED TO THE TIES AND WITNESS TREES.



LOCATION
(INDICATE CORNER BY "X")

SEAL:

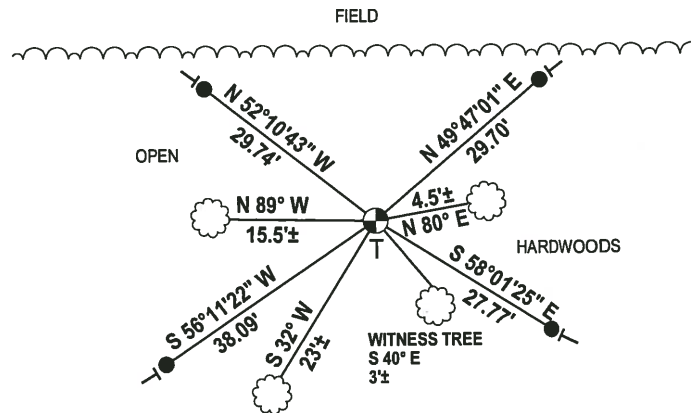
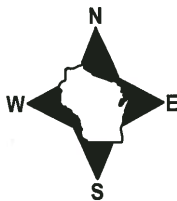


DATA SHOWN HERE ON THIS TIE SHEET IS CORRECT AND COMPLETE TO THE BEST OF MY KNOWLEDGE AND BELIEF.

PROFESSIONAL LAND SURVEYOR

DATE 12-21-17

- TIE SKETCH

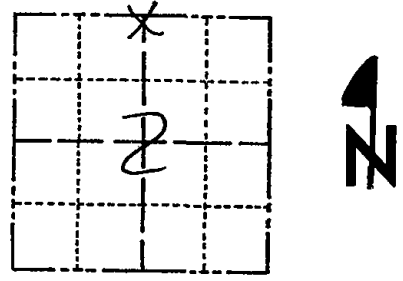


- 3/4" x 18" IRON REBAR SET, 1.50#/FT
- ⊕ HARRISON FOUND
- VINYL "T" POST
- ☁ WITNESS TREE FOUND

Government Land Corner Certificate

ADAMS County
 TYPE OF MONUMENT: _____
 STATE PLANE COORDINATES: N _____
 E _____
 ELEVATION — M.S.L. DATUM: _____
 THETA ANGLE: _____
 FIELD BOOK: 76 PAGE 111
 DRAWN BY: 59 HAUMSCHILD

CORNER NO. 10
 SECTION 2
 TOWN 14
 RANGE 7



LOCATION
 (Indicated by 'X')

SEAL:



DATA SHOWN HERE ON
 CERTIFIED CORRECT:

Anthony B. Kiedrowski
 Registered Land Surveyor

DATE: 9/3/81

BASIS FOR MONUMENT LOCATION

Show info such as: History of corner, with reference to Vol. and pg., dates, surveyor; exact description of monument replaced; if location computed, by taped or EDM traverse; landowner remarks, etc. (Use reverse side if necessary)

Since M.C. Smith was here in 1916, per vol 2, page 26 of county surveyor records, I used the fence corner as the quarter corner, after running all of the north line of sections 1, 2, and 3. This corner is on a straight line and equidistant between section corners. M.C. Smith calls for the distances to be unequal, but I could not prorate his distances and yet come close to fitting old possession lines.

TIE SKETCH

Show at least four ties, also fence lines, roads, topo, size and type of witness trees and if off road - best way to arrive at corner.

