

PUBLIC LAND SURVEY MONUMENT RECORD

TYPE OF MONUMENT: SURVEY NAIL
ADAMS COUNTY COORDINATES, NAD 83 (2007)

N. 129963.569

E. 573059.145

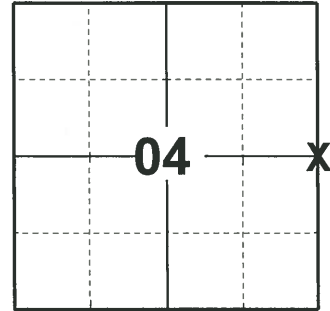
ELEVATION- DATUM

FIELD WORK DATE: 03/31/2020

BASIS FOR MONUMENT LOCATION

1971 - PLS 981 SET RAILROAD SPIKE AND TIED OUT.

2020 - PLS 2675 FOUND NO EVIDENCE OF A CORNER MONUMENT BUT FOUND 2 WITNESSES. CALCULATED CORNER LOCATION WITH A DISTANCE-DISTANCE INTERSECTION. THIS LOCATION AGREES WITH THE MSA AND PLS 922 SECTION SUMMARY DISTANCE BETWEEN THE E1/4 AND SE CORNER OF SECTION 4. ACCEPTED THIS FOR THE CORNER LOCATION. SET A NEW SURVEY NAIL IN THE ROAD SURFACE AND 4 NEW TIES.



LOCATION
(INDICATE CORNER BY "X")

SEAL:



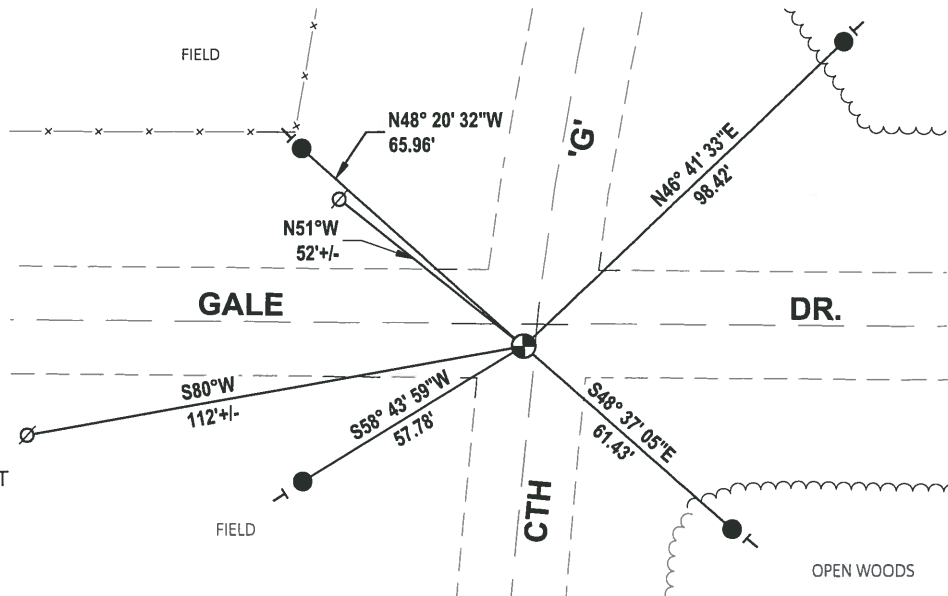
DATA SHOWN HERE ON THIS TIE SHEET IS CORRECT AND COMPLETE TO THE BEST OF MY KNOWLEDGE AND BELIEF.

PROFESSIONAL LAND SURVEYOR

DATE 5/21/2020

- TIE SKETCH

NOTE: THE CORNER LANDS 4.9'± SOUTH OF GALE DR. CENTERLINE AND 2.8'± WEST OF CTH 'G' CENTERLINE.



- SET 3/4" x 18" IRON REBAR, 1.50#/FT
- ⊙ SET SURVEY NAIL MONUMENT
- ∅ WITNESS POWER POLE
- VINYL "T" POST

ADAMS COUNTY

Survey Monument Record

TYPE OF MONUMENT: 30" HARRISON R.R. SPIKE

STATE PLANE COORDINATES: N _____

E _____

ELEVATION — M.S.L. DATUM: _____

THETA ANGLE: _____

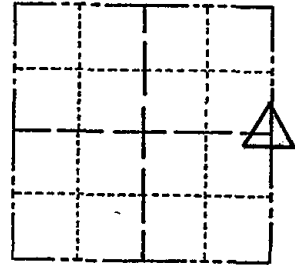
FIELD BOOK: 104 PAGE 91

CORNER NO. 60 (17)

SECTION 4

TOWN 14

RANGE 7



LOCATION
(Indicated by 'X')

SEAL:

BASIS FOR MONUMENT LOCATION

(Use reverse side if necessary)

Show info such as: History of corner, with reference to Vol. and pg, dates, surveyor; exact description of monument replaced; if location computed, by taped or EDM traverse; landowner remarks, etc.

Set monument

November 10, 1971

Sam T. Mullen R.L.S. S-981

Ties O.K. 12-9-81 SK-DW
" " FOUND RR SPIKE 2-12-86 GR-SS
12-19-90 KZ-JG ALL OK
12-05-95 JG-SS 2 NEW TIES
6-11-01 JG, ALL OK
1-31-06 - JG, ALL OK
2-25-11 SS, OK
3/10/2011 OK CPR

CERTIFIED CORRECT:

Registered Land Surveyor

DATE: _____

TIE SKETCH

(Show at least four ties)

