

PUBLIC LAND SURVEY MONUMENT RECORD

TYPE OF MONUMENT: HARRISON
 ADAMS COUNTY COORDINATES, NAD 83 (2007)

N. 127411.071

E. 565123.862

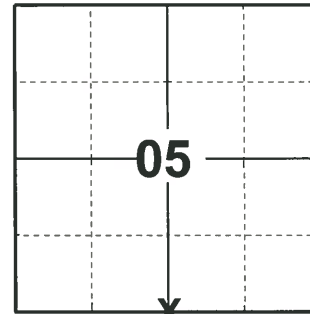
ELEVATION- DATUM

FIELD WORK DATE: 04/05/2020

BASIS FOR MONUMENT LOCATION

1979 - PLS 1267 FOUND ORIGINAL BEARING TREE STUMP OF A 15" DIAMETER W. OAK DECAYED. TRAVERSED SECTION BY EDM & T-2 TO VERIFY CORNER. M.C. SMITH, IDENTIFIED CORNER IN RESURVEY OF SECTION, 1908.

2020 - PLS 2675 FOUND HARRISON MONUMENT 6"± ABOVE THE GROUND AND 1 TIE. THE MONUMENT AGREES WITH THE EXISTING TIE. ACCEPTED THE HARRISON MONUMENT AS THE CORNER LOCATION. SET 4 NEW TIES AND MEASURED TO THE EXISTING TIE.



LOCATION
 (INDICATE CORNER BY "X")

SEAL:

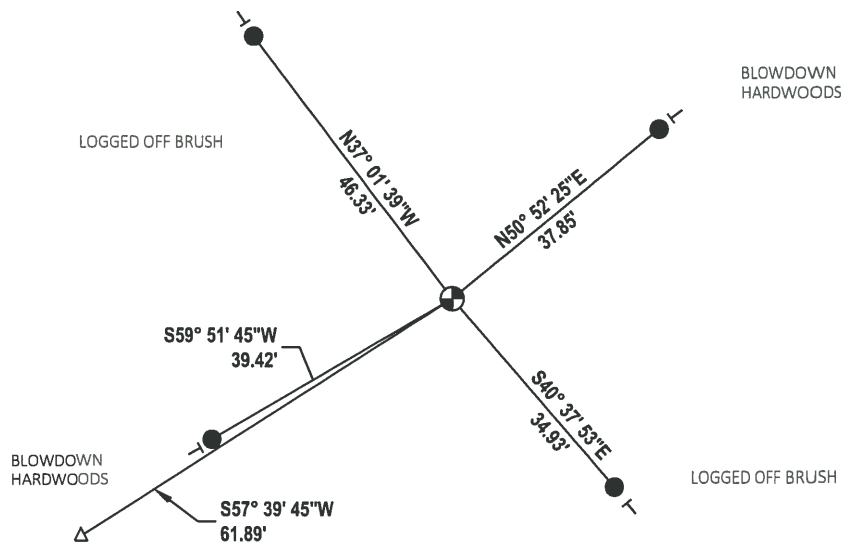
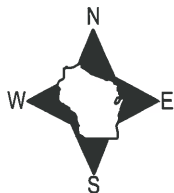


DATA SHOWN HERE ON THIS TIE SHEET IS CORRECT AND COMPLETE TO THE BEST OF MY KNOWLEDGE AND BELIEF.

PROFESSIONAL LAND SURVEYOR

DATE 5/21/2020

- TIE SKETCH

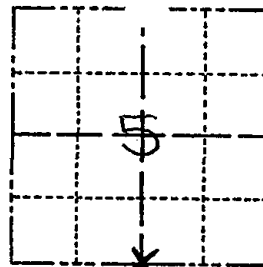


- SET 3/4" x 18" IRON REBAR, 1.50#/FT
- ⊕ FOUND HARRISON MONUMENT
- ┆ VINYL "T" POST
- △ FOUND 1/2" IRON REBAR WITH 2' DEPRESSION AROUND IT

Government Land Corner Certificate

_____ County
 TYPE OF MONUMENT: HARRISON
 STATE PLANE COORDINATES: N _____
 E _____
 ELEVATION — M.S.L. DATUM: _____
 THETA ANGLE: _____
 FIELD BOOK: _____ PAGE _____
 DRAWN BY: _____

CORNER NO. 24
 SECTION 5
 TOWN T.14N.
 RANGE R.7E.



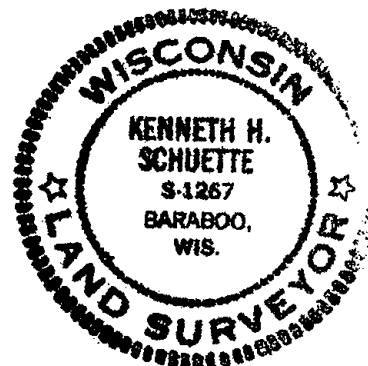
LOCATION
 (Indicated by 'X')

BASIS FOR MONUMENT LOCATION

Show info such as: History of corner, with reference to Vol. and pg., dates, surveyor; exact description of monument replaced; if location computed, by taped or EDM traverse; landowner remarks, etc. (Use reverse side if necessary)

Found original Bt stump of a 15" dia. W. Oak decayed. Traversed section by EDM & T-2 to verify corner. M.C. Smith, identified corner in resurvey of Section, 1908.

SEAL:



DATA SHOWN HERE ON
 CERTIFIED CORRECT:

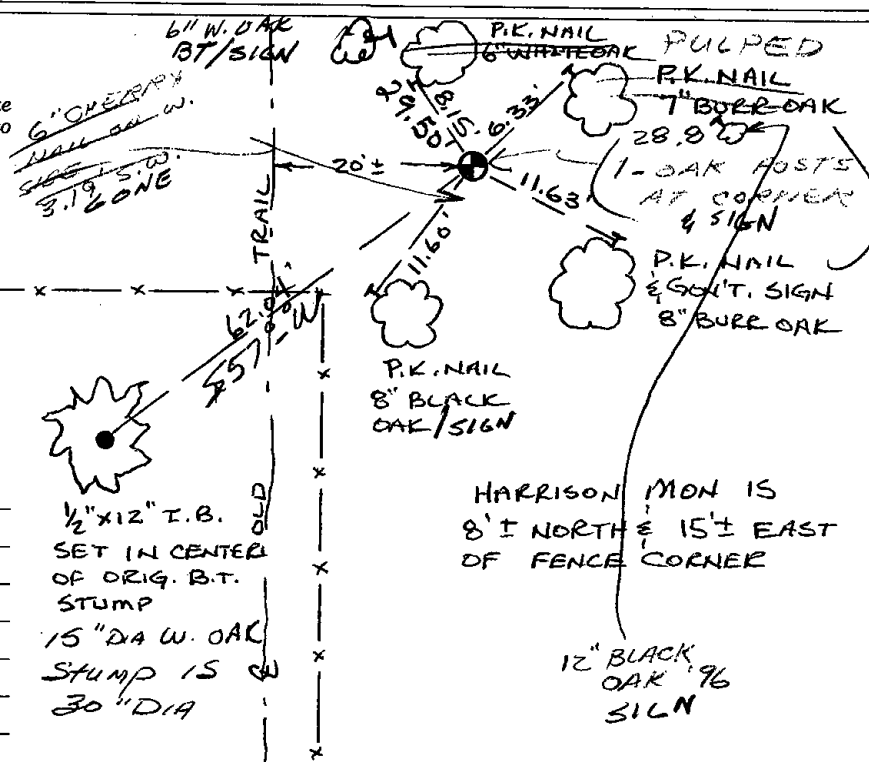
Ken Schuette
 Registered Land Surveyor

DATE: 7 Aug 1979

TIE SKETCH

Show at least four ties, also fence lines, roads, topo, size and type of witness trees and if off road - best way to arrive at corner.

PLACED
 GOLI SIGN ON 6" DIA.
 WOOD POST - 1 MP1.
 NW OF 114.
 SIGN FACES No.



MAINTENANCE RECORD

Date	Init.	Remarks
12-10-81	SK-DW	CORNERS O.K
3-6-85	SR-SS	1 NEW TIE
8-22-91	SS	OK
11-6-96	SS	1 NEW TIE
3-13-02	JG	OK
2-8-06	JG	1-NEW TIE
12-15-11	MS	OK

HARRISON MON IS
 8' NORTH & 15' EAST
 OF FENCE CORNER

12" BLACK
 OAK '96
 SIGN