

05
SECTION

14
TOWN

07
RANGE

ADAMS COUNTY

COUNTY CORNER NO: 25

ROMPORTOL ID: 41407050000

PUBLIC LAND SURVEY MONUMENT RECORD

TYPE OF MONUMENT: HARRISON
ADAMS COUNTY COORDINATES, NAD 83 (2007)

N. 127387.679

E. 567746.855

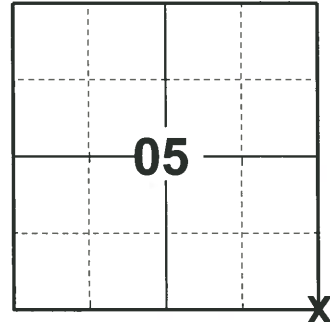
ELEVATION- DATUM

FIELD WORK DATE: 03/31/2020

BASIS FOR MONUMENT LOCATION

1979 - PLS 1267 LOOKED FOR ORIGINAL BEARING TREES AS PER RUNNING NOTES AND DID NOT FIND ANYTHING AS AREA HAD BEEN LOGGED OVER AND BULLDOZED LEVEL. TRAVERSED SECTION BY EDM AND SET NE CORNER BY DOUBLING DISTANCE FROM SE CORNER TO E 1/4 CORNER ON LINE.

2020 - PLS 2675 FOUND HARRISON MONUMENT 6"± ABOVE THE GROUND AND 1 TIE. THE MONUMENT AGREES WITH THE TIE. ACCEPTED THE HARRISON MONUMENT AS THE CORNER LOCATION. SET 4 NEW TIES AND MEASURED TO THE EXISTING TIE.



LOCATION

(INDICATE CORNER BY "X")

SEAL:



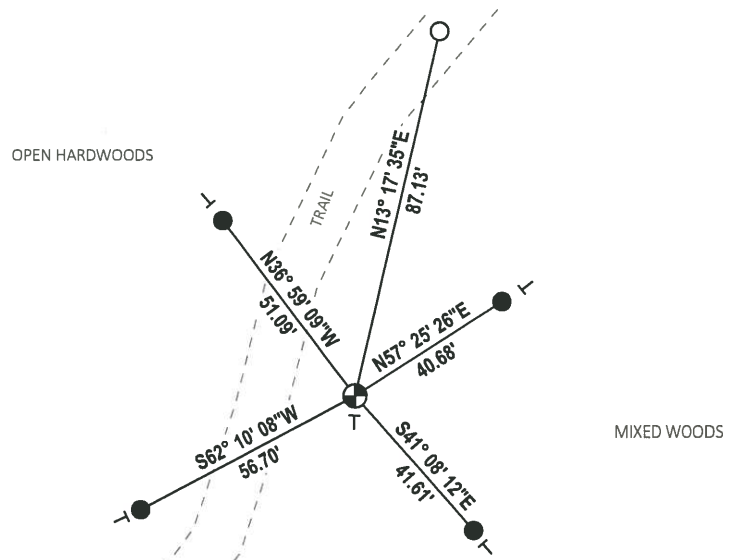
DATA SHOWN HERE ON THIS TIE SHEET IS CORRECT AND COMPLETE TO THE BEST OF MY KNOWLEDGE AND BELIEF.

PROFESSIONAL LAND SURVEYOR

DATE 5/21/2020

- TIE SKETCH

NOTE: THE CORNER LANDS 14.5'± EAST OF THE TRAIL.



- SET 3/4" x 18" IRON REBAR, 1.50#/FT
- FOUND 3/4" IRON ROD
- ⊕ FOUND HARRISON MONUMENT
- ┊ VINYL "T" POST

Government Land Corner Certificate

ADAMS County

TYPE OF MONUMENT: STANDARD HARRISON

STATE PLANE COORDINATES: N _____
E _____

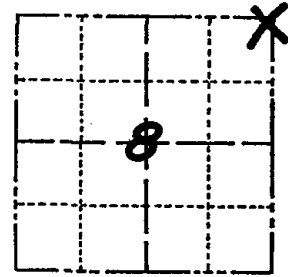
ELEVATION — M.S.L. DATUM: _____

THETA ANGLE: _____

FIELD BOOK: _____ PAGE _____

DRAWN BY: SQUIRES

CORNER NO. 25
SECTION 8
TOWN 14 N
RANGE 7 E



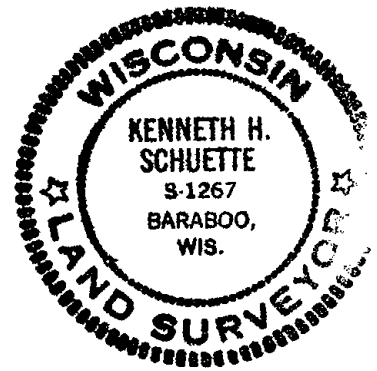
LOCATION
(Indicated by 'X')

BASIS FOR MONUMENT LOCATION

Show info such as: History of corner, with reference to Vol. and pg., dates, surveyor; exact description of monument replaced; if location computed, by taped or EDM traverse; landowner remarks, etc. (Use reverse side if necessary)

Looked for Original BT's as per Running Notes and did not find anything as Area had been logged over & bulldozed level. Traversed section by EDM & set NE cor by doubling distance from SE corner to E 1/4 corner on line.

SEAL:



DATA SHOWN HERE ON CERTIFIED CORRECT:

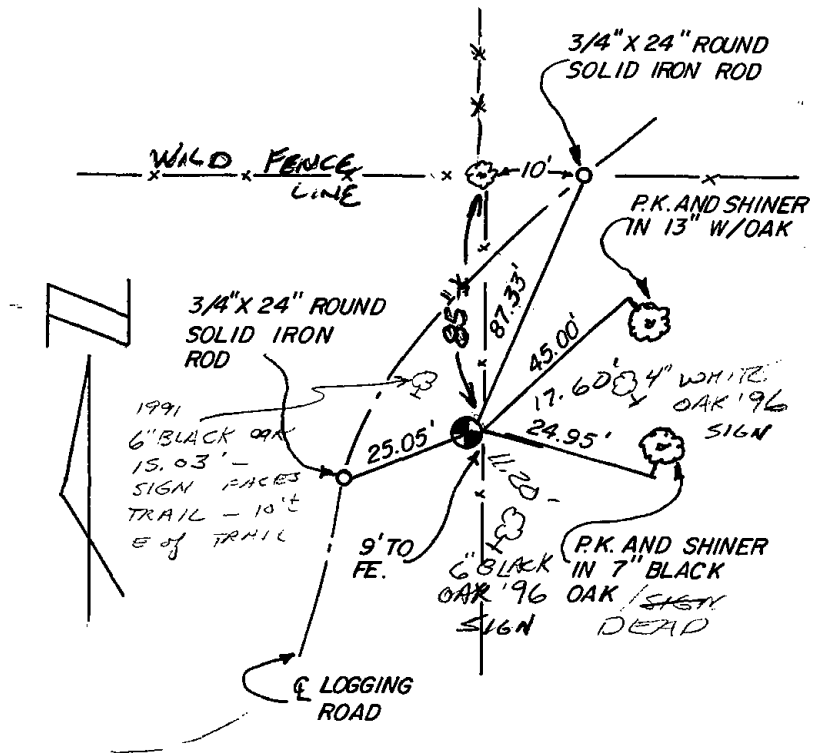
Ken Schuette
Registered Land Surveyor

DATE: 12 July 1979

TIE SKETCH

Show at least four ties, also fence lines, roads, topo, size and type of witness trees and if off road - best way to arrive at corner.

FENCES MOSTLY DOWN
CIRCULE IN FENCE
85' NORTH



MAINTENANCE RECORD

| Date | Init. | Remarks |
|----------|-------|------------|
| 12-10-81 | SK-DW | CORNER O.K |
| 3-6-86 | GR-SS | " " |
| 8-22-91 | SS | 1 NEW TIE |
| 11-6-96 | SS | 2 " " |
| 3-13-02 | JG | OK |
| 2-8-06 | JG | OK |
| 12-15-11 | MS | OK |