

PUBLIC LAND SURVEY MONUMENT RECORD

TYPE OF MONUMENT: HARRISON
 ADAMS COUNTY COORDINATES, NAD 83 (2007)

N. 127301.963

E. 575639.175

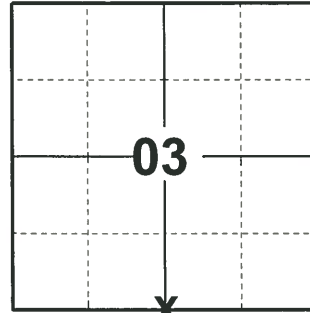
ELEVATION- DATUM

FIELD WORK DATE: 03/30/2020

BASIS FOR MONUMENT LOCATION

1982 - PLS 1444 NO EVIDENCE OF ORIGINAL CORNER OR ANY RESURVEY CORNERS WERE FOUND AT THIS LOCATION. ALSO, NO INDICATION OF ANY ORIGINAL BEARING TREES WERE FOUND. CORNER WAS SET AT THE INTERSECTION OF FENCES, BEING THE BEST AVAILABLE EVIDENCE.

2020 - PLS 2675 FOUND HARRISON MONUMENT 4"± ABOVE THE GROUND AND 3 TIES. THE MONUMENT AGREES WITH ALL 3 TIES. ACCEPTED THE HARRISON MONUMENT AS THE CORNER LOCATION. SET 1 NEW TIE AND MEASURED TO THE EXISTING TIES.



LOCATION
 (INDICATE CORNER BY "X")

SEAL:

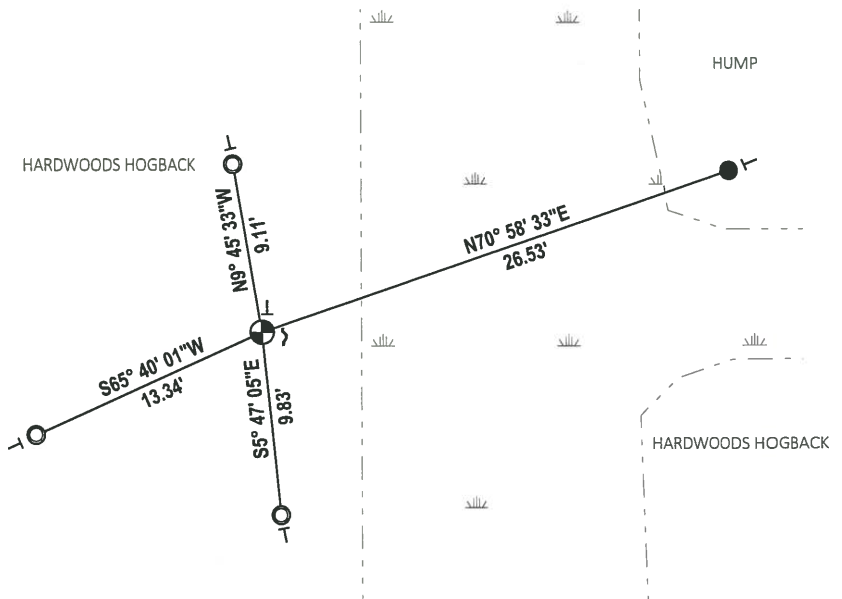


DATA SHOWN HERE ON THIS TIE SHEET IS CORRECT AND COMPLETE TO THE BEST OF MY KNOWLEDGE AND BELIEF.

PROFESSIONAL LAND SURVEYOR

DATE 5/21/2020

- TIE SKETCH

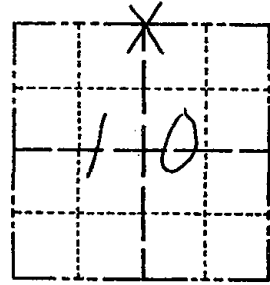


- SET 3/4" x 18" IRON REBAR, 1.50#/FT
- FOUND 1-1/4" O.D. IRON PIPE
- ⊕ FOUND HARRISON MONUMENT
- ⌵ STEEL FENCE POST
- ⊥ VINYL "T" POST

Government Land Corner Certificate

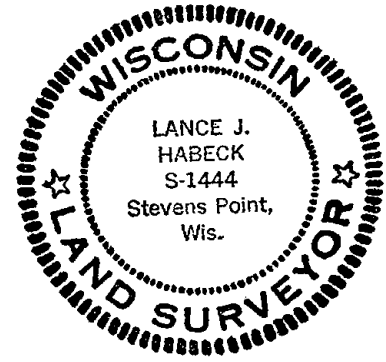
ADAMS County
 TYPE OF MONUMENT: HARRISON MONUMENT
 STATE PLANE COORDINATES: N _____
 E _____
 ELEVATION — M.S.L. DATUM: _____
 THETA ANGLE: _____
 FIELD BOOK: 92 PAGE 53
 DRAWN BY: SSH

CORNER NO. 28
 SECTION 10
 TOWN 14
 RANGE 7



LOCATION
(Indicated by 'X')

SEAL:



DATA SHOWN HERE ON
CERTIFIED CORRECT:

Lance J. Habeck
Registered Land Surveyor

DATE: 5/4/82

BASIS FOR MONUMENT LOCATION

Show info such as: History of corner, with reference to Vol. and pg., dates, surveyor; exact description of monument replaced; if location computed, by taped or EDM traverse; landowner remarks, etc. (Use reverse side if necessary)

No evidence of any original corner or any resurvey corners were found at this location. Also, no indication of any original bearing trees were found. Corner was set at the intersection of fences, being the best available evidence.

TIE SKETCH

Show at least four ties, also fence lines, roads, topo, size and type of witness trees and if off road - best way to arrive at corner.

