

03
SECTION

14
TOWN

07
RANGE

ADAMS COUNTY

COUNTY CORNER NO.: 29

ROMPORTOL ID: 41407030000

PUBLIC LAND SURVEY MONUMENT RECORD

TYPE OF MONUMENT: HARRISON
ADAMS COUNTY COORDINATES, NAD 83 (2007)

N. 127225.014

E. 578316.500

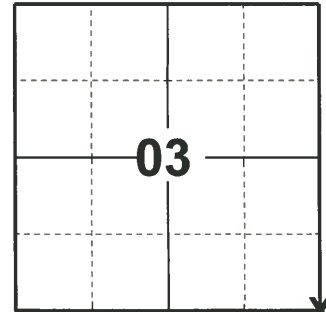
ELEVATION- - - - DATUM - - - -

FIELD WORK DATE: 03/30/2020

BASIS FOR MONUMENT LOCATION

1974 - PLS 922 COULD NOT FIND ANY EVIDENCE OF OCCUPATION IN THIS AREA. RAN A RANDOM TRAVERSE AND COMPUTED VICINITY OF WHERE TO SEARCH FOR CORNER; WITH THE USE OF AN ELECTRONIC MAGNETIC LOCATOR RECOVERED A 3/8" TWIST IRON WHICH FIT E.D.M. TRAVERSE OF THIS SECTION GOOD. SET HARRISON MONUMENT.

2020 - PLS 2675 FOUND HARRISON MONUMENT 3"± BELOW THE GROUND AND 2 WITNESSES. THE MONUMENT AGREES WITH BOTH WITNESSES. ACCEPTED THE HARRISON MONUMENT AS THE CORNER LOCATION. SET 4 NEW TIES AND MEASURED TO THE EXISTING WITNESSES.



LOCATION

(INDICATE CORNER BY "X")

SEAL:

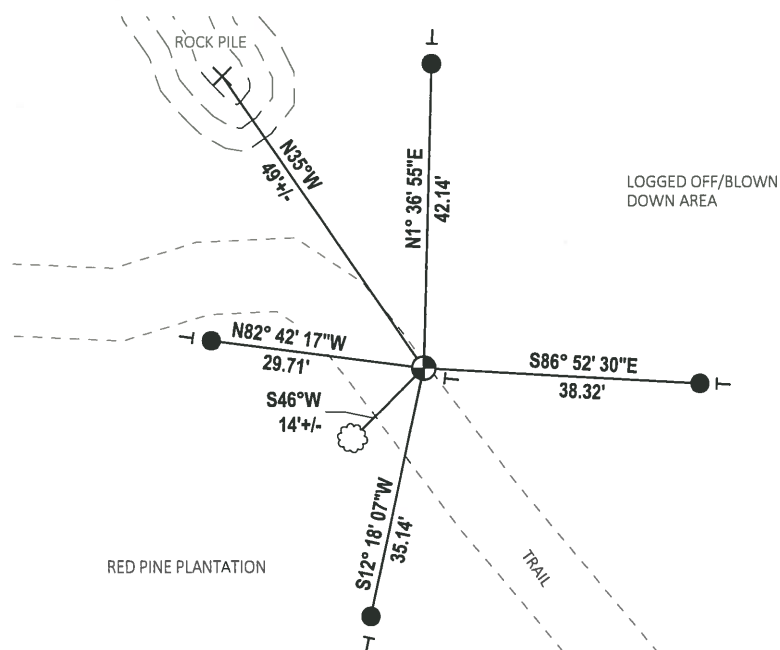


DATA SHOWN HERE ON THIS TIE SHEET IS CORRECT AND COMPLETE TO THE BEST OF MY KNOWLEDGE AND BELIEF.

PROFESSIONAL LAND SURVEYOR

DATE 5/21/2020

- TIE SKETCH



- SET 3/4" x 18" IRON REBAR, 1.50#/FT
- × FOUND 'X' IN LARGE STONE
- ⊕ FOUND HARRISON MONUMENT
- ├ VINYL "T" POST
- ⊗ WITNESS TREE

ADAMS COUNTY

Survey Monument Record *Harrison set 5-8-75*

TYPE OF MONUMENT: 2" x 30" IRON PIPE

STATE PLANE COORDINATES: N _____

E _____

ELEVATION — M.S.L. DATUM: _____

THETA ANGLE: _____

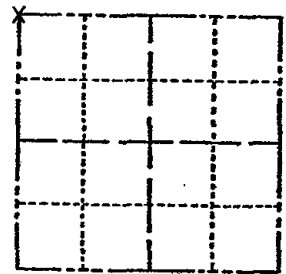
FIELD BOOK: _____ PAGE _____

CORNER NO. 518

SECTION 11

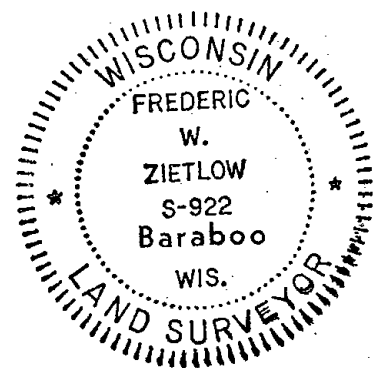
TOWN T.14 N.

RANGE R.7 E.



LOCATION
(Indicated by 'X')

SEAL:



BASIS FOR MONUMENT LOCATION

(Use reverse side if necessary)

Show info such as: History of corner, with reference to Vol. and pg, dates, surveyor; exact description of monument replaced; if location computed, by taped or EDM traverse; landowner remarks, etc.

Could not find any evidence of occupation in this area. We ran a random traverse and computed vicinity of where to search for corner; with the use of an electronic magnetic locator we recovered a 3/8" twist iron which fit E.D.M. traverse of this section good.

- CORNER O.K. 12-9-81 SK-DW
- " O.K. 5 TIES REMAINING S.S. 3 20-96
- " " " " SG 7-9-91
- " " " " SG-SS 11/28/95
- 1- NEW TIE, MON. OK 3-22-02 - JG
- OK, 2-24-06 - JG
- 2 NEW, 2 GONE 1-6-12 MS

CERTIFIED CORRECT:

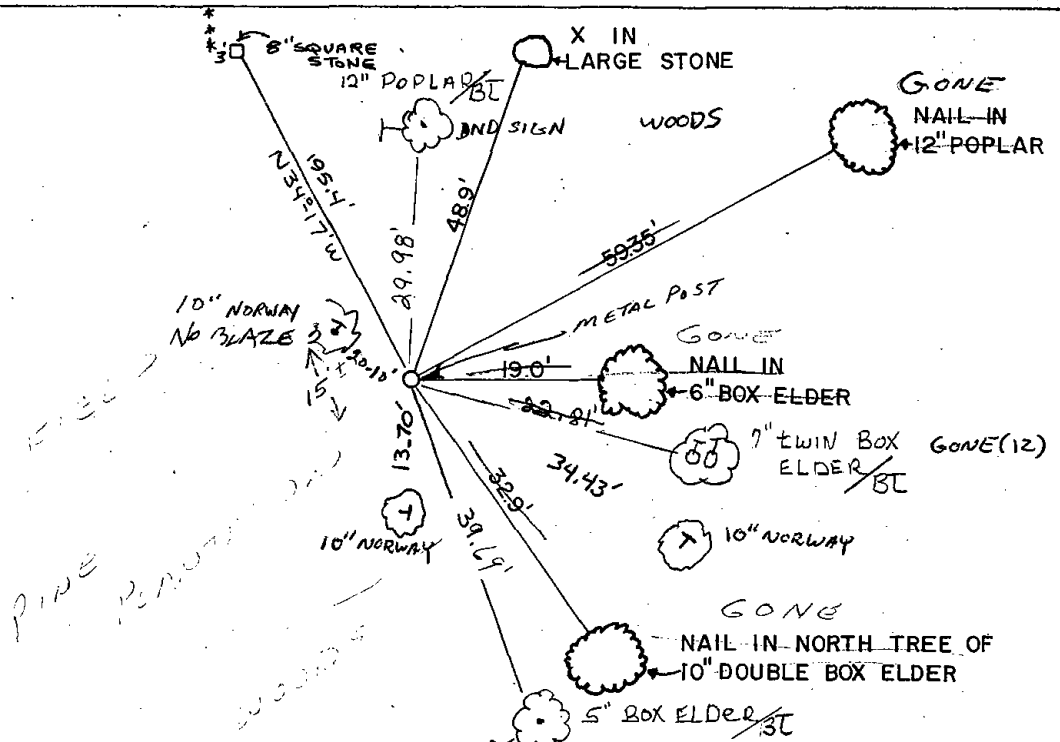
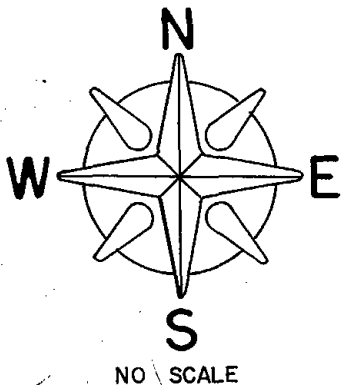
Frederic W. Zietlow

Registered Land Surveyor

DATE: Nov. 22, 1974

TIE SKETCH

(Show at least four ties)



HOUSE #3681

ROAD

PIPE REMOVED

WOODS