

02
SECTION

14
TOWN

07
RANGE

ADAMS COUNTY

COUNTY CORNER NO: 31

ROMPORTOL ID: 41407020000

PUBLIC LAND SURVEY MONUMENT RECORD

TYPE OF MONUMENT: HARRISON
ADAMS COUNTY COORDINATES, NAD 83 (2007)

N. 127251.570

E. 583615.393

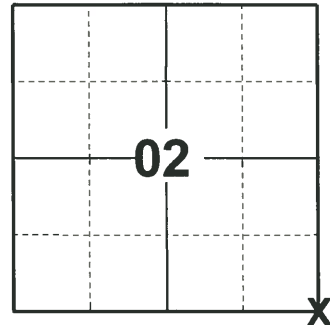
ELEVATION- DATUM

FIELD WORK DATE: 03/30/2020

BASIS FOR MONUMENT LOCATION

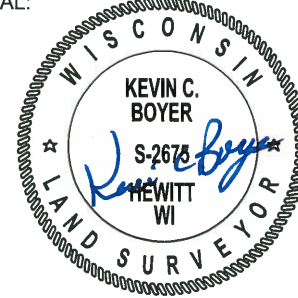
1974 - PLS 922 FOUND OLD FENCE CORNER THAT FIT E.D.M. TRAVERSE OF THIS SECTION GOOD. ACCEPTED IT AS BEST AVAILABLE EVIDENCE AND SET HARRISON.

2020 - PLS 2675 FOUND HARRISON MONUMENT 4"± ABOVE THE GROUND AND 2 WITNESS TREES. THE MONUMENT AGREES WITH BOTH WITNESS TREES. ACCEPTED THE HARRISON MONUMENT AS THE CORNER LOCATION. SET 4 NEW TIES AND MEASURED TO THE EXISTING WITNESS TREES.



LOCATION
(INDICATE CORNER BY "X")

SEAL:

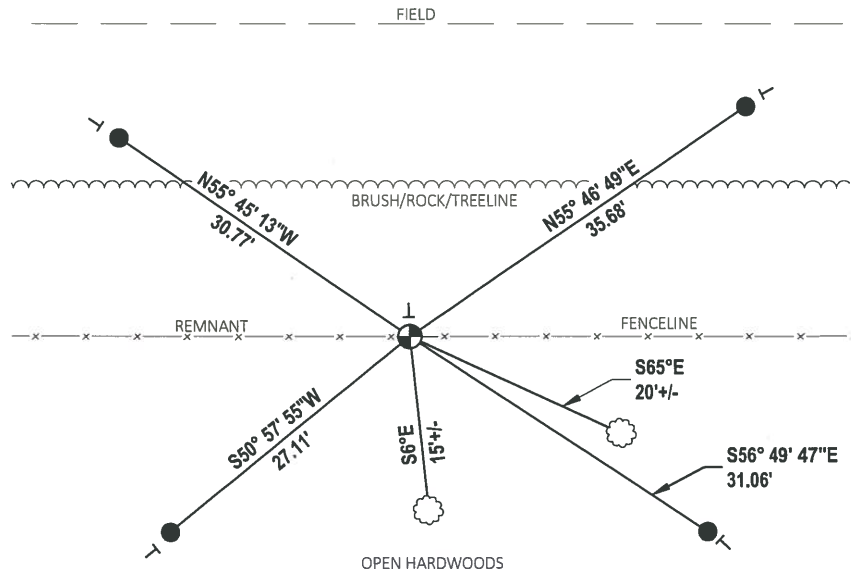
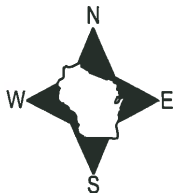


DATA SHOWN HERE ON THIS TIE SHEET IS CORRECT AND COMPLETE TO THE BEST OF MY KNOWLEDGE AND BELIEF.

PROFESSIONAL LAND SURVEYOR

DATE 5/21/2020

TIE SKETCH



- SET 3/4" x 18" IRON REBAR, 1.50#/FT
- ⊕ FOUND HARRISON MONUMENT
- ┆ VINYL "T" POST
- ⊗ WITNESS TREE

ADAMS COUNTY

Survey Monument Record

Harrison set 5-8-75

TYPE OF MONUMENT: 2" x 30" IRON PIPE

STATE PLANE COORDINATES: N _____

E _____

ELEVATION — M.S.L. DATUM: _____

THETA ANGLE: _____

FIELD BOOK: _____ PAGE _____

BASIS FOR MONUMENT LOCATION

(Use reverse side if necessary)

Show info such as: History of corner, with reference to Vol. and pg. dates, surveyor; exact description of monument replaced; if location computed, by taped or EDM traverse; landowner remarks, etc.

Found old fence corner that fit E.D.M. traverse of this section good. Accepted it as best available evidence.

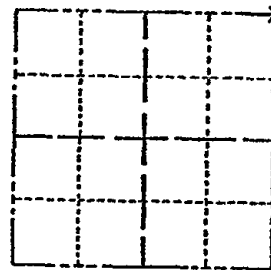
- CORNER O.K. 10-23-76 RN-SS
- CORNER O.K. 12-9-81 SK-DW
- 2 NEW TIES 3-24-86 GR-SS
- 1-GONE CORNER OK SS-JG 8-26-71
- 1 NEW TIE 3-22-82 SS
- OK, 2-24-86-JG
- 1 NEW TIE 12-03-11 SS

CORNER NO. N. 519

SECTION 11

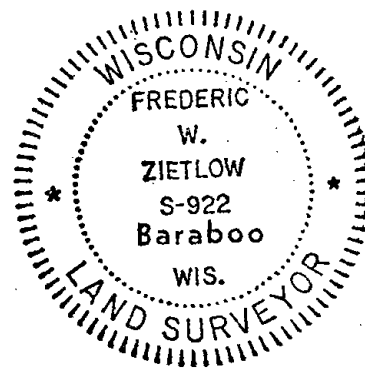
TOWN T. 14 N.

RANGE R. 7 E.



LOCATION
(Indicated by 'X')

SEAL:



CERTIFIED CORRECT:

Frederic W. Zietlow
Registered Land Surveyor

DATE: Nov. 22, 1974

TIE SKETCH

(Show at least four ties)

