

09
SECTION

14
TOWN

07
RANGE

ADAMS COUNTY

COUNTY CORNER NO: 37
ROMPORTOL ID: 41407092000

PUBLIC LAND SURVEY MONUMENT RECORD

TYPE OF MONUMENT: HARRISON
ADAMS COUNTY COORDINATES, NAD 83 (2007)

N. 124668.807

E. 573014.463

ELEVATION- _____ DATUM _____

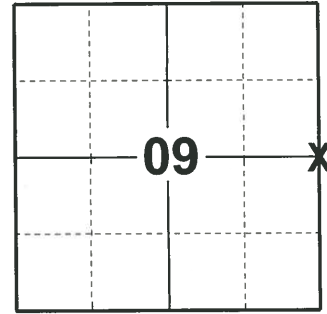
FIELD WORK DATE: 04/08/2020

BASIS FOR MONUMENT LOCATION

1971 - PLS 981 SET HARRISON MONUMENT

1981 - PLS 1444 RETIE OF SAM T. MULLEN CORNER. FOUND PK NAIL AT INTERSECTION OF TIE DISTANCES BUT NO MONUMENT. SET HARRISON MONUMENT MAY 5, 1982

2020 - PLS 2675 FOUND HARRISON 4"± BELOW THE ROAD SURFACE AND 3 WITNESS TREES. THE MONUMENT AGREES WITH ALL 3 WITNESS TREES. ACCEPTED THE HARRISON AS THE CORNER LOCATION. SET 4 NEW TIES AND MEASURED TO THE EXISTING WITNESS TREES.



LOCATION
(INDICATE CORNER BY "X")

SEAL:



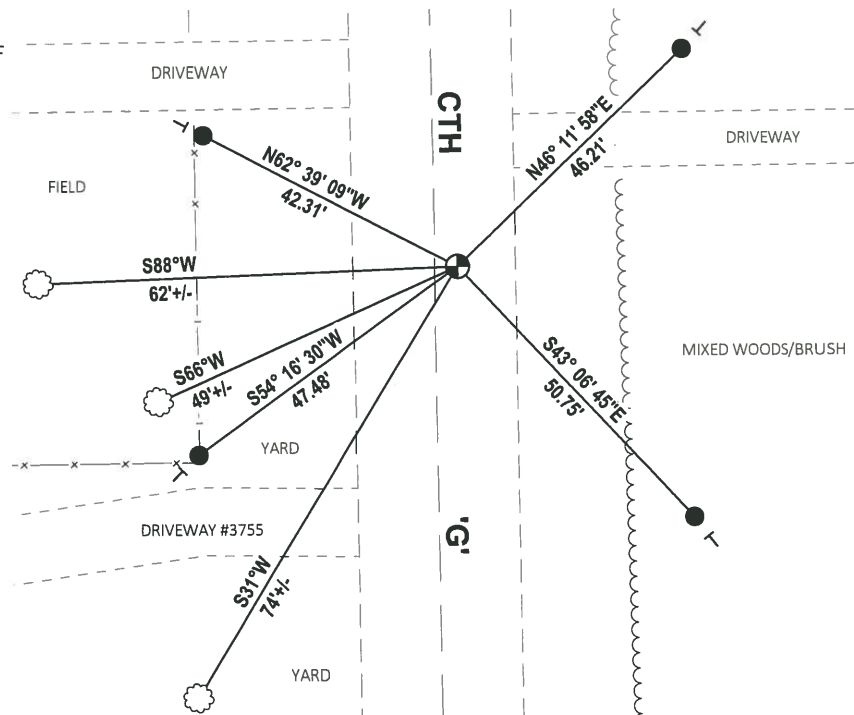
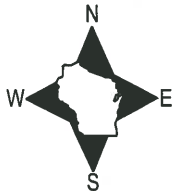
DATA SHOWN HERE ON THIS TIE SHEET IS CORRECT AND COMPLETE TO THE BEST OF MY KNOWLEDGE AND BELIEF.

PROFESSIONAL LAND SURVEYOR

DATE 5/21/2020

- TIE SKETCH

NOTE: THE CORNER LANDS 3.4'± EAST OF CTH 'G' CENTERLINE.

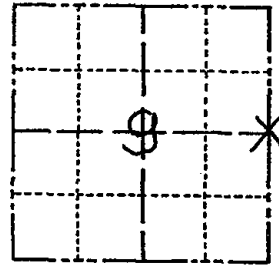


- SET 3/4" x 18" IRON REBAR, 1.50#/FT
- ⊕ FOUND HARRISON MONUMENT
- VINYL "T" POST
- ☼ WITNESS TREE

Government Land Corner Certificate

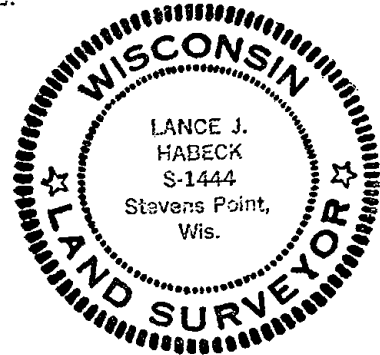
ADAMS County
 TYPE OF MONUMENT: HARRISON
 STATE PLANE COORDINATES: N _____
 E _____
 ELEVATION — M.S.L. DATUM: _____
 THETA ANGLE: _____
 FIELD BOOK: _____ PAGE _____
 DRAWN BY: S.J.H.

CORNER NO. 37
 SECTION 9
 TOWN 14
 RANGE 7



LOCATION
 (Indicated by 'X')

SEAL:



BASIS FOR MONUMENT LOCATION

Show info such as: History of corner, with reference to Vol. and pg., dates, surveyor; exact description of monument replaced; if location computed, by taped or EDM traverse; landowner remarks, etc. (Use reverse side if necessary)

Retie of Sam T. Mullen corner. Found PK Nail at intersection of tie distances but no monument. Set monument May 5, 1982.

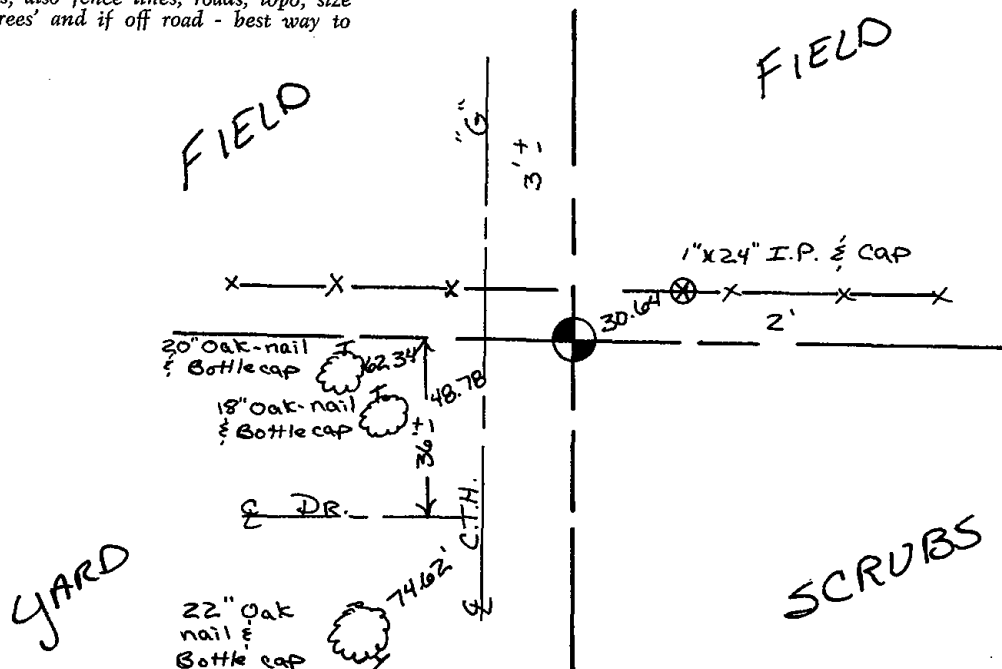
DATA SHOWN HERE ON
 CERTIFIED CORRECT:

Lance J. Habeck
 Registered Land Surveyor

DATE: 5/7/82

TIE SKETCH

Show at least four ties, also fence lines, roads, topo, size and type of witness trees and if off road - best way to arrive at corner.



ADAMS COUNTY

Survey Monument Record

TYPE OF MONUMENT: 30" HARRISON

STATE PLANE COORDINATES: N _____

E _____

ELEVATION — M.S.L. DATUM: _____

THETA ANGLE: _____

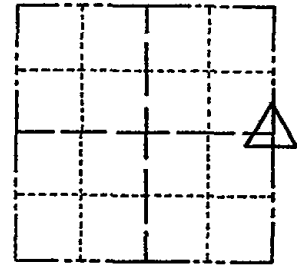
FIELD BOOK: 104 PAGE 89

CORNER NO. 58

SECTION 9

TOWN 14

RANGE 7



LOCATION
(Indicated by 'X')

SEAL:

BASIS FOR MONUMENT LOCATION

(Use reverse side if necessary)

Show info such as: History of corner, with reference to Vol. and pg, dates, surveyor; exact description of monument replaced; if location computed, by taped or EDM traverse; landowner remarks, etc.

Set monument

November 10, 1971

Sam T. Mullen R.L.S. S-981

CERTIFIED CORRECT:

Registered Land Surveyor

DATE: _____

TIE SKETCH

(Show at least four ties)

