

# ADAMS COUNTY

## Survey Monument Record

TYPE OF MONUMENT: 30" HARRISON MARKER

STATE PLANE COORDINATES: N \_\_\_\_\_

E \_\_\_\_\_

ELEVATION — M.S.L. DATUM: \_\_\_\_\_

THETA ANGLE: \_\_\_\_\_

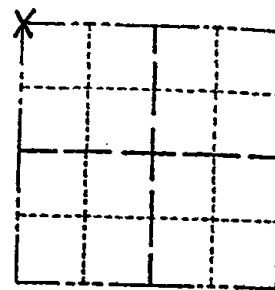
FIELD BOOK: \_\_\_\_\_ PAGE \_\_\_\_\_

CORNER NO. 750

SECTION 18

TOWN 14N

RANGE 7E



LOCATION  
(Indicated by 'X')

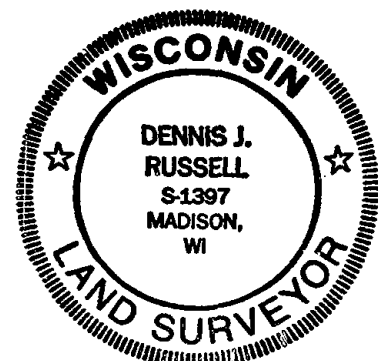
SEAL:

### BASIS FOR MONUMENT LOCATION

(Use reverse side if necessary)

Show info such as: History of corner, with reference to Vol. and pg. dates, surveyor; exact description of monument replaced; if location computed, by taped or EDM traverse; landowner remarks, etc.

Existing Monument was found in place. Monument was removed and raised due to reconstruction of C.T.H. "B". All tie measurements are horizontal measurements unless noted otherwise.



*Cor OK 6-11-01 - JG  
2-NEW TIES, 1-18-06 - JG  
2-25-11 55' OK*

CERTIFIED CORRECT

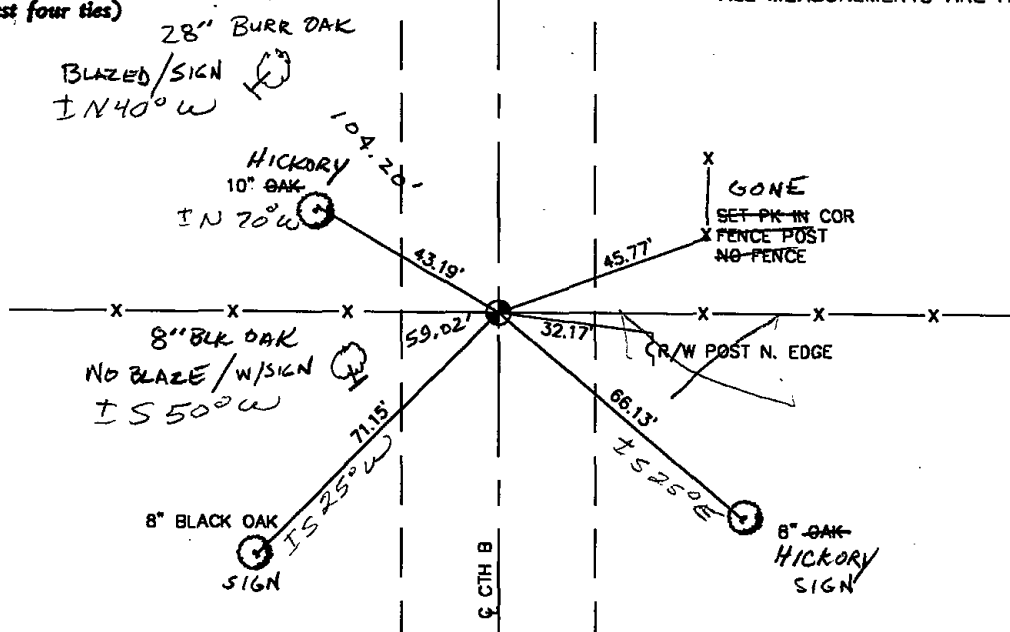
*Dennis J. Russell*  
Registered Land Surveyor

DATE: *July 26, 1999*

### TIE SKETCH

(Show at least four ties)

ALL MEASUREMENTS ARE HORIZONTAL.

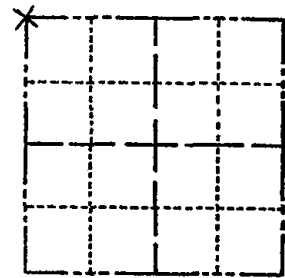


ADAMS COUNTY

Survey Monument Record

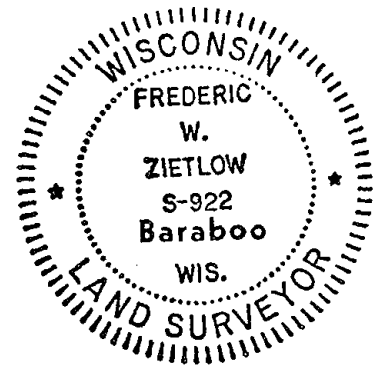
TYPE OF MONUMENT: 30" HARRISON  
STATE PLANE COORDINATES: N \_\_\_\_\_  
E \_\_\_\_\_  
ELEVATION — M.S.L. DATUM: \_\_\_\_\_  
THETA ANGLE: \_\_\_\_\_  
FIELD BOOK: \_\_\_\_\_ PAGE \_\_\_\_\_

CORNER NO. 750  
SECTION 18  
TOWN 14-N  
RANGE 7-E



LOCATION  
(Indicated by 'X')

SEAL:



CERTIFIED CORRECT:

*Frederic W. Zietlow*  
Registered Land Surveyor

DATE: July 31, 1975

BASIS FOR MONUMENT LOCATION

(Use reverse side if necessary)

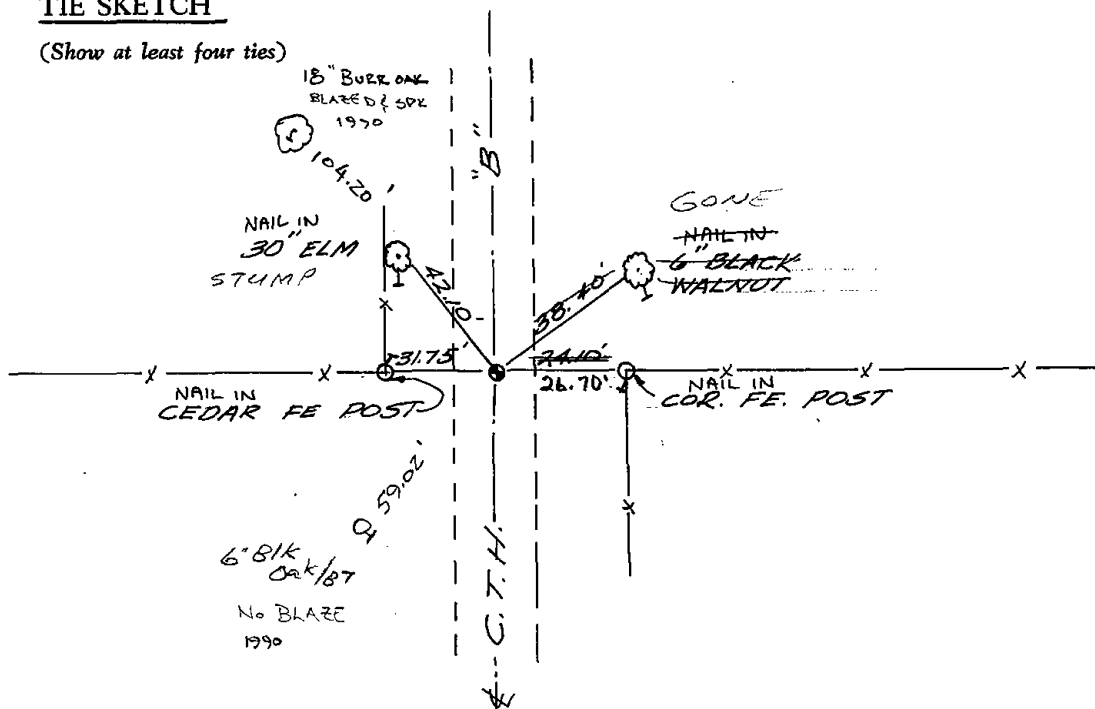
Show info such as: History of corner, with reference to Vol. and pg, dates, surveyor; exact description of monument replaced; if location computed, by taped or EDM traverse; landowner remarks, etc.

FOUND 1" IRON PIPE AT E & OFF E-W FENCES  
FIT TRANSIT TAPE TRAVERSE OF SECTION  
GOOD. CHECKED CO. SURVEY RECORDS AND  
NO RESURVEYS WERE ON FILE

CORNER O.K. 10-29-76 GR-DCH

TIE SKETCH

(Show at least four ties)



### MAINTENANCE RECORD

Date	Init.	Remarks
12-10-81	SK-DW	CORNERS O.K
3-17-86	SR-SS	O.K.
12-19-90	KE-JG	O.K. 2 NEW TIES
12-1-95	SS	OK