

09  
SECTION

14  
TOWN

07  
RANGE

# ADAMS COUNTY

COUNTY CORNER NO: 47  
ROMPORTOL ID: 41407090000

## PUBLIC LAND SURVEY MONUMENT RECORD

TYPE OF MONUMENT: HARRISON  
ADAMS COUNTY COORDINATES, NAD 83 (2007)

N. 122020.556

E. 573045.262

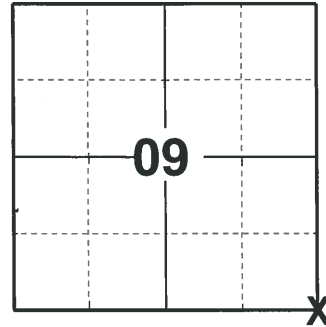
ELEVATION-          DATUM         

FIELD WORK DATE: 04/08/2020

### BASIS FOR MONUMENT LOCATION

1971 - PLS 981 SET HARRISON MONUMENT.

2020 - PLS 2675 FOUND HARRISON 4"± BELOW THE ROAD SURFACE AND 1 WITNESS. THE MONUMENT AGREES WITH THE WITNESS. ACCEPTED THE HARRISON AS THE CORNER LOCATION. SET 1 NEW TIE AND MEASURED TO 3 FOUND PROPERTY IRONS AND THE EXISTING WITNESS.



**LOCATION**  
(INDICATE CORNER BY "X")

SEAL:



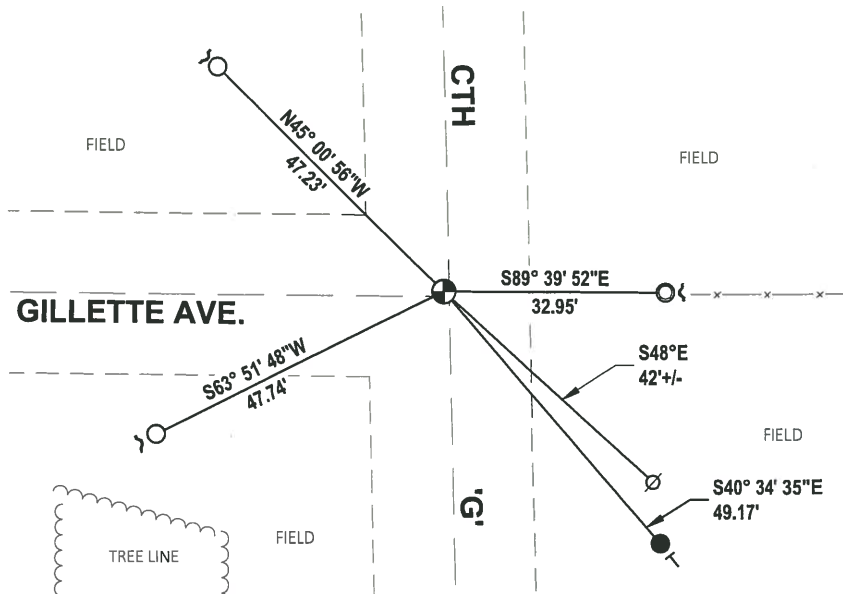
DATA SHOWN HERE ON THIS TIE SHEET IS CORRECT AND COMPLETE TO THE BEST OF MY KNOWLEDGE AND BELIEF.

PROFESSIONAL LAND SURVEYOR

DATE 5/21/2020

### - TIE SKETCH

NOTE: THE CORNER LANDS 1± NORTH WEST OF THE INTERSECTION OF CTH 'G' AND GILLETTE AVE. CENTERLINES.



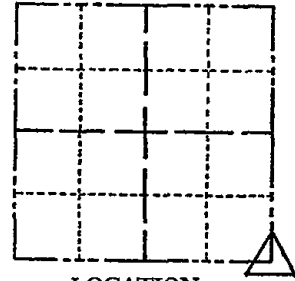
- SET 3/4" x 18" IRON REBAR, 1.50#/FT
- FOUND 3/4" IRON ROD
- FOUND 1-1/4" O.D. IRON PIPE
- ⊕ FOUND HARRISON MONUMENT
- ⊗ WITNESS POWER POLE
- ↵ STEEL FENCE POST
- VINYL "T" POST

ADAMS COUNTY

Survey Monument Record

TYPE OF MONUMENT: 30" HARRISON  
STATE PLANE COORDINATES: N \_\_\_\_\_  
E \_\_\_\_\_  
ELEVATION — M.S.L. DATUM: \_\_\_\_\_  
THETA ANGLE: \_\_\_\_\_  
FIELD BOOK: 104 PAGE 88

CORNER NO. 57 (47)  
SECTION 9  
TOWN 14  
RANGE 7



LOCATION  
(Indicated by 'X')

SEAL:

BASIS FOR MONUMENT LOCATION

(Use reverse side if necessary)

Show info such as: History of corner, with reference to Vol. and pg, dates, surveyor; exact description of monument replaced; if location computed, by taped or EDM traverse; landowner remarks, etc.

Set monument

November 10, 1971

Sam T. Mullen R.L.S. S-981

HARRISON RESET 7/12/94  
ALL TIES ARE OK JG-BB

CERTIFIED CORRECT:

Registered Land Surveyor

DATE: \_\_\_\_\_

TIE SKETCH

(Show at least four ties)

