

13 SECTION    14 TOWN    06 RANGE

# ADAMS COUNTY

COUNTY CORNER NO: 60  
 ROMPORTOL ID: 41406132000

## PUBLIC LAND SURVEY MONUMENT RECORD

TYPE OF MONUMENT: HARRISON  
 ADAMS COUNTY COORDINATES, NAD 83 (2007)

N. 119345.637  
 E. 557568.938

ELEVATION-      DATUM     

FIELD WORK DATE: 09/14/2017

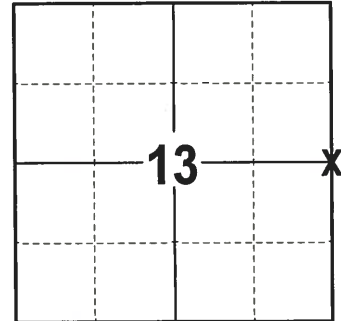
### BASIS FOR MONUMENT LOCATION

1975 - PLS 922 FOUND A P.K. NAIL AT THE CENTERLINE INTERSECTION USED BY DEAN JESSE IN A PRIOR SURVEY. FIT TRANSIT-TAPE TRAVERSE OF THE SECTION GOOD. SET A HARRISON MONUMENT AT THE CORNER LOCATION AND TIED OUT.

DATE UNKNOWN (PLS UNKNOWN) - FOUND A 30" HARRISON MONUMENT AT THE CORNER LOCATION SET BY FREDERIC W. ZIETLOW, JULY 31, 1975. REPLACED MISSING TIE.

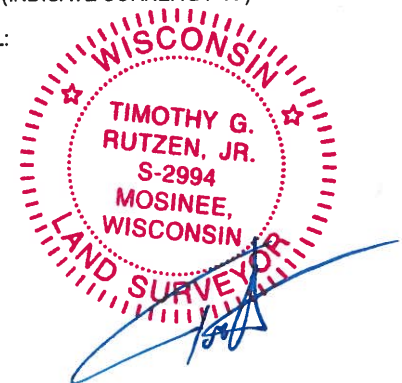
1999 - PLS 1397 EXISTING MONUMENT WAS FOUND AT THE CORNER LOCATION. MONUMENT WAS REMOVED AND RAISED DUE TO RECONSTRUCTION OF C.T.H. B. CORNER WAS RE-TIED.

2017 - PLS 2994 FOUND A HARRISON MONUMENT 6" BELOW THE ROAD SURFACE AND 2 WITNESSES. THE MONUMENT AGREES WITH THE EXISTING WITNESSES. ACCEPTED THE HARRISON MONUMENT AS THE CORNER LOCATION. SET 4 NEW TIES AND RE-MEASURED TO THE TIES AND WITNESSES.



**LOCATION**  
 (INDICATE CORNER BY "X")

SEAL:



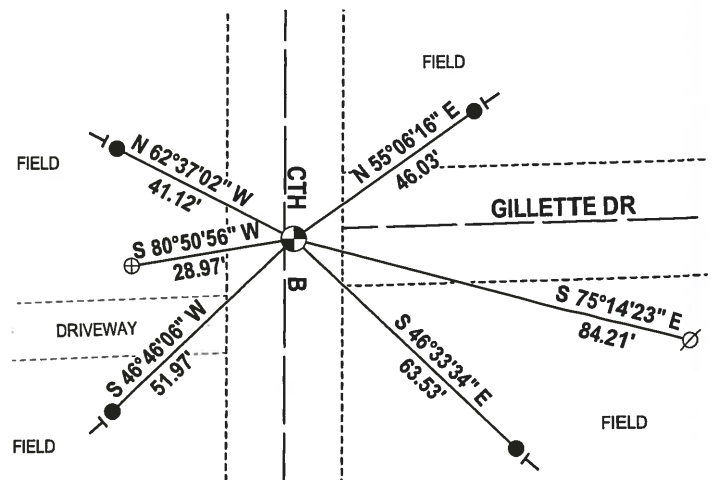
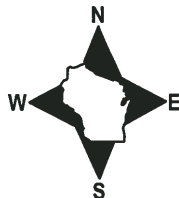
DATA SHOWN HERE ON THIS TIE SHEET IS CORRECT AND COMPLETE TO THE BEST OF MY KNOWLEDGE AND BELIEF.

PROFESSIONAL LAND SURVEYOR

DATE 11-15-17

### - TIE SKETCH -

NOTE: THE CORNER FALLS 2± EAST OF THE CENTERLINE OF CTH B.



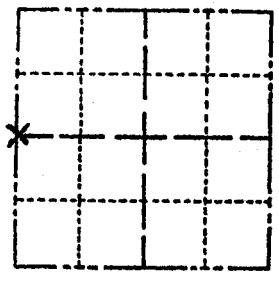
- 3/4" x 18" IRON REBAR SET, 1.50#/FT
- ⊕ PK NAIL IN TOP OF CULVERT FND
- ⊙ HARRISON FOUND
- ⊗ WITNESS POWER POLE
- └ VINYL "T" POST

# ADAMS COUNTY

## Survey Monument Record

TYPE OF MONUMENT: 30" HARRISON MARKER  
 STATE PLANE COORDINATES: N \_\_\_\_\_  
 E \_\_\_\_\_  
 ELEVATION — M.S.L. DATUM: \_\_\_\_\_  
 THETA ANGLE: \_\_\_\_\_  
 FIELD BOOK: \_\_\_\_\_ PAGE \_\_\_\_\_

CORNER NO. 754  
 SECTION 18  
 TOWN 14N  
 RANGE 7E



LOCATION  
(Indicated by 'X')

SEAL:

### BASIS FOR MONUMENT LOCATION

(Use reverse side if necessary)

Show info such as: History of corner, with reference to Vol. and pg. dates, surveyor; exact description of monument replaced; if location computed, by taped or EDM traverse; landowner remarks, etc.

Existing Monument was found in place. Monument was removed and raised due to reconstruction of C.T.H. "B". All tie measurements are horizontal measurements unless noted otherwise.

*CDR, OK, 6-11-01 - JG*  
*ALL OK, 1-18-06 - JG*

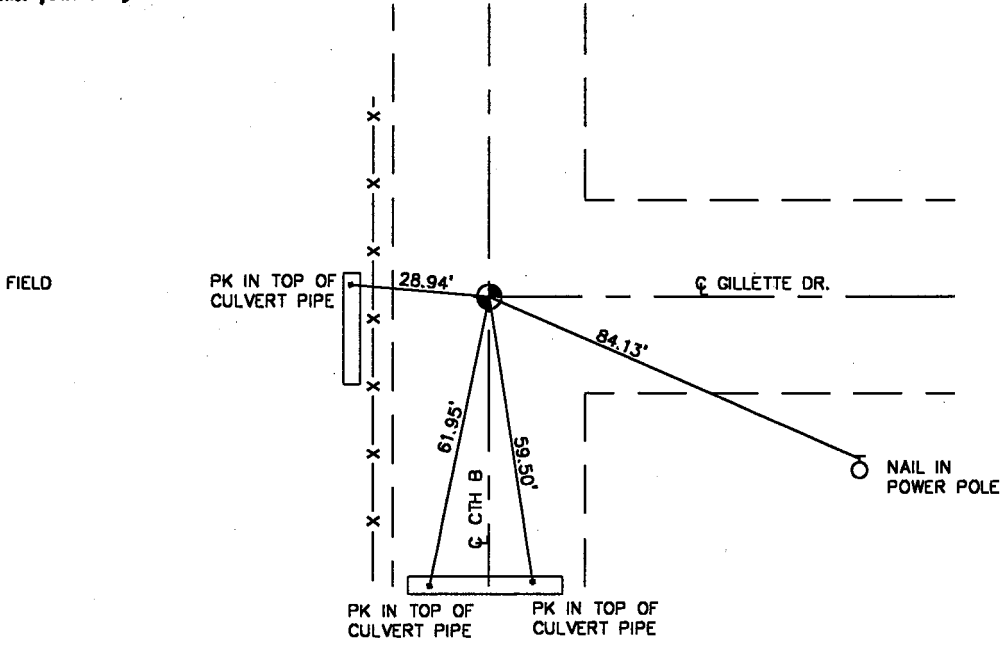


CERTIFIED CORRECT:  
*Dennis J. Russell*  
 Registered Land Surveyor  
 DATE: *July 26, 1999*

### TIE SKETCH

(Show at least four ties)

ALL MEASUREMENTS ARE HORIZONTAL.

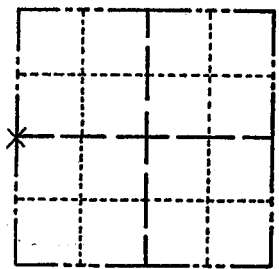


ADAMS COUNTY

Survey Monument Record

TYPE OF MONUMENT: 30" HARRISON
STATE PLANE COORDINATES: N
E
ELEVATION - M.S.L. DATUM:
THETA ANGLE:
FIELD BOOK: PAGE

CORNER NO. 754 (54)
SECTION 18
TOWN 14 N
RANGE 7 E



LOCATION (Indicated by 'X')

SEAL:

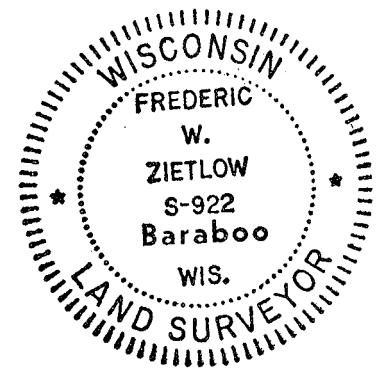
BASIS FOR MONUMENT LOCATION

(Use reverse side if necessary)

Show info such as: History of corner, with reference to Vol. and pg, dates, surveyor; exact description of monument replaced; if location computed, by taped or EDM traverse; landowner remarks, etc.

FOUND PK NAIL AT E-E INTERSECT USED BY DEAN JESSE IN PRIOR SURVEY. FIT TRANSIT - TAPE TRAVERSE OF SECTION GOOD.

OK 6-2-90 KEN CARLSON



CERTIFIED CORRECT:

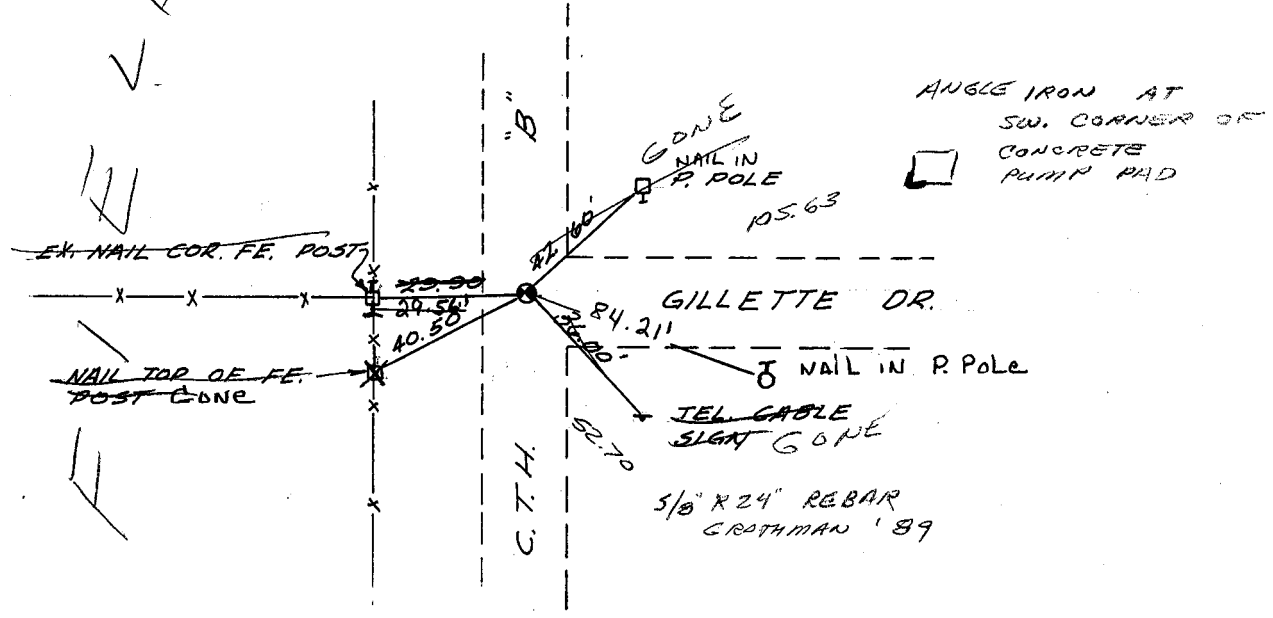
Frederic W. Zietlow

Registered Land Surveyor

DATE: JULY 31, 1975

TIE SKETCH

(Show at least four ties)



# U. S. PUBLIC LAND SURVEY MONUMENT RECORD

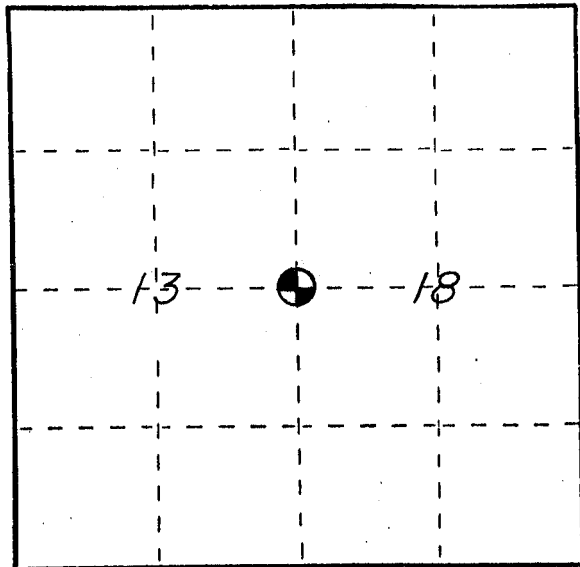
## ADAMS COUNTY

**INSTRUCTIONS:** This record shall show the location of the corner and shall include all of the following nine elements (a through i).

(a) Identify the corner by reference to the U.S. public land survey system.

○ = Corner monument restored.

W 1/4 CORNER, SECTION 18,  
T14N - R7E, TOWN OF  
DELL PRAIRIE, ADAMS  
COUNTY, WISCONSIN.



(b) Describe any record evidence, monument evidence, occupational evidence, testimonial evidence or any other material evidence you considered, and whether the monument was found or placed.

FOUND 30" HARRISON MONUMENT IN PLACE AS SET BY FREDERIC W. ZIETLOW, JULY 31, 1975. REPLACED MISSING TIE.

(c) In the plan view drawing below, provide reference ties to at least 4 witness monuments, or, if the location is within a municipality, to at least 2 witness monuments. (Witness monuments shall be made of concrete, natural stone, iron or other equally durable material.) Describe witness monuments.

(d) Show a plan view drawing depicting the relevant monuments and reference ties which is sufficient in detail to enable accurate relocation of the corner monument if the corner monument is disturbed. Indicate north.

