

17
SECTION

14
TOWN

07
RANGE

ADAMS COUNTY

COUNTY CORNER NO: 56

ROMPORTOL ID: 41407172000

PUBLIC LAND SURVEY MONUMENT RECORD

TYPE OF MONUMENT: HARRISON
ADAMS COUNTY COORDINATES, NAD 83 (2007)

N. 119437.880

E. 567785.402

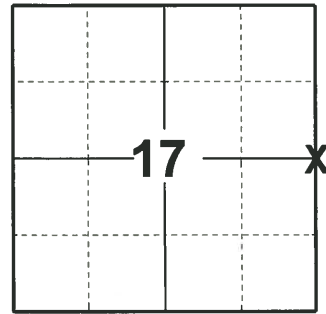
ELEVATION- - - - - DATUM - - - - -

FIELD WORK DATE: 04/15/2020

BASIS FOR MONUMENT LOCATION

1976 - PLS 606 EDM TRAVERSE. ACCEPTED OLD FENCE CORNER. SET HARRISON.

2020 - PLS 2675 FOUND HARRISON FLUSH WITH THE GROUND AND 2 WITNESSES. THE MONUMENT AGREES WITH BOTH WITNESSES. ACCEPTED THE HARRISON AS THE CORNER LOCATION. SET 4 NEW TIES AND MEASURED TO THE EXISTING WITNESSES.



LOCATION
(INDICATE CORNER BY "X")

SEAL:

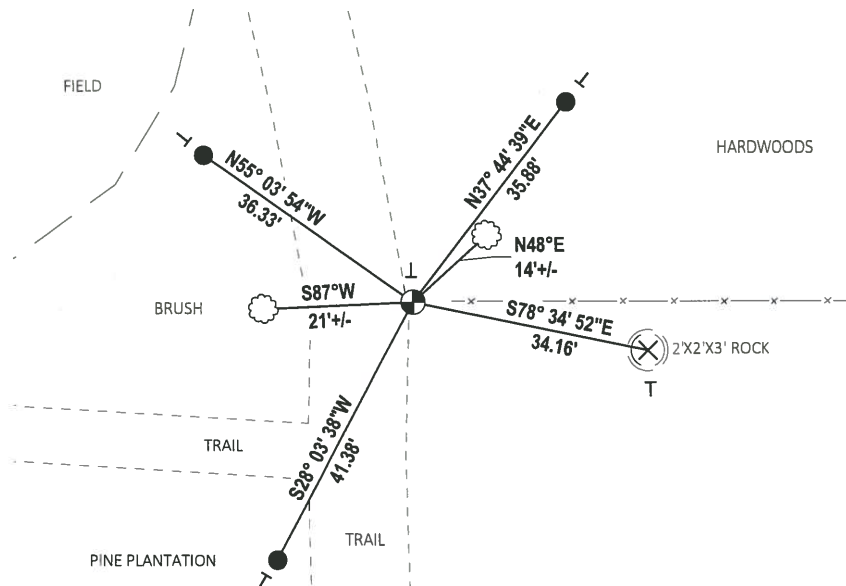


DATA SHOWN HERE ON THIS TIE SHEET IS CORRECT AND COMPLETE TO THE BEST OF MY KNOWLEDGE AND BELIEF.

PROFESSIONAL LAND SURVEYOR

DATE 5/28/2020

- TIE SKETCH



- SET 3/4" x 18" IRON REBAR, 1.50#/FT
- × SET CHISELED 'X'
- ⊕ FOUND HARRISON MONUMENT
- VINYL "T" POST
- ⊙ WITNESS TREE

ADAMS COUNTY

Survey Monument Record

TYPE OF MONUMENT: HARRISON

STATE PLANE COORDINATES: N _____

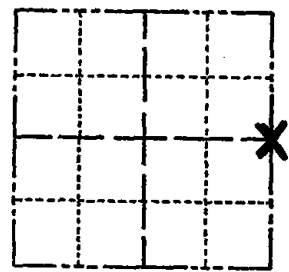
E _____

ELEVATION — M.S.L. DATUM: _____

THETA ANGLE: _____

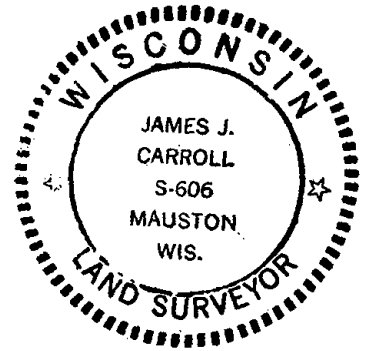
FIELD BOOK: _____ PAGE _____

CORNER NO. 971 (52)
SECTION 17
TOWN T14N
RANGE R7E



LOCATION
(Indicated by 'X')

SEAL:



BASIS FOR MONUMENT LOCATION

(Use reverse side if necessary)

Show info such as: History of corner, with reference to Vol. and pg. dates, surveyor; exact description of monument replaced; if location computed, by taped or EDM traverse; landowner remarks, etc.

E.D.M. traverse

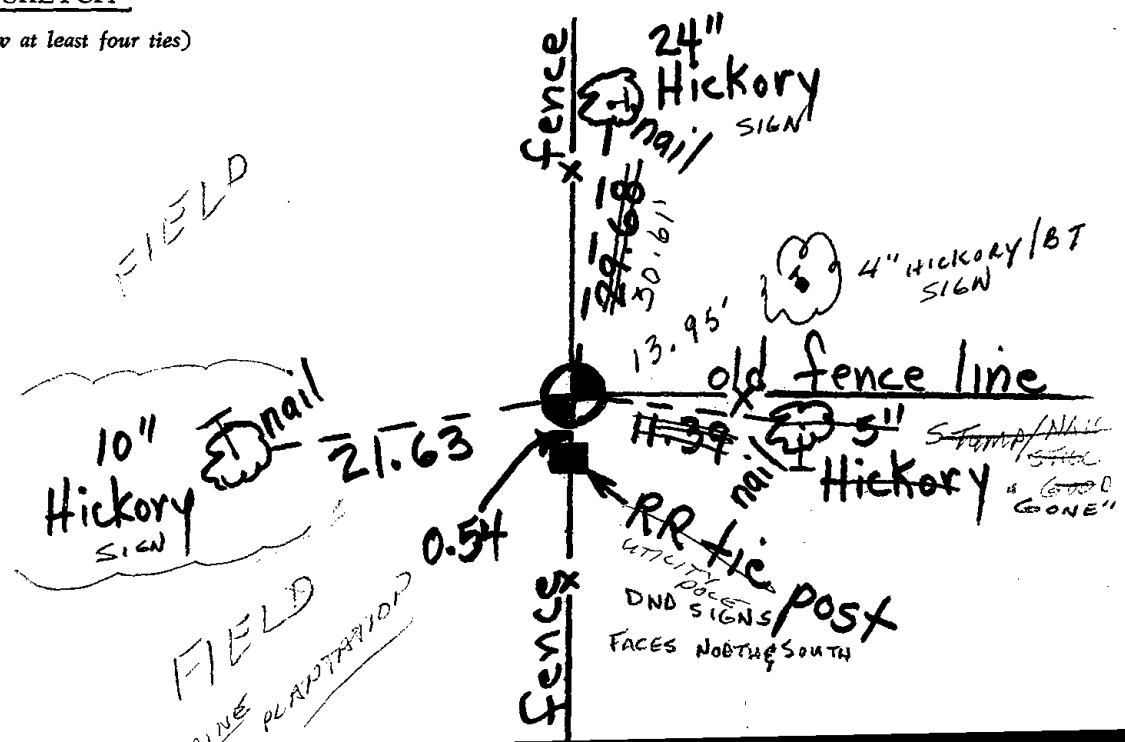
Accepted old fence corner.

ENTER FROM C.T.H. "P" - FIELD ROAD
@ SE COR OF SECTION 17

CERTIFIED CORRECT:
James J. Carroll
Registered Land Surveyor
DATE: June 1, 1976

TIE SKETCH

(Show at least four ties)



MAINTENANCE RECORD

Date	Init.	Remarks
12-10-81	SK-DW	O.K
3-6-86	GR-SS	"
11-5-96	JG	ALL OK
3-14-02	JG	1-GONE, 1-NEW TIE, MDN. OK
1-24-06	JG	OK
1-5-17	JG	OK