

PUBLIC LAND SURVEY MONUMENT RECORD

TYPE OF MONUMENT: HARRISON
ADAMS COUNTY COORDINATES, NAD 83 (2007)

N. 119382.619

E. 573081.938

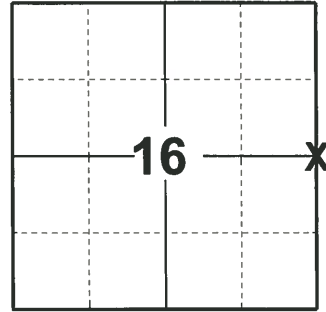
ELEVATION- _____ DATUM _____

FIELD WORK DATE: 04/14/2020

BASIS FOR MONUMENT LOCATION

1982 - PLS 878 NO RECORD OF ANY RESURVEYS. EXCAVATED 3'X8'X2-1/2' DEEP HOLE, FOUND 6"X6"X13" UPRIGHT, GRANITE STONE DOWN 18". LOWERED STONE AND PUT HARRISON ON TOP.

2020 - PLS 2675 FOUND HARRISON 6"± BELOW THE ROAD SURFACE, 2 TIES AND 1 WITNESS. THE MONUMENT AGREES WITH THE TIES AND WITNESS. ACCEPTED THE HARRISON AS THE CORNER LOCATION. SET 2 NEW TIES AND MEASURED TO THE EXISTING TIES AND WITNESS.



LOCATION
(INDICATE CORNER BY "X")

SEAL:



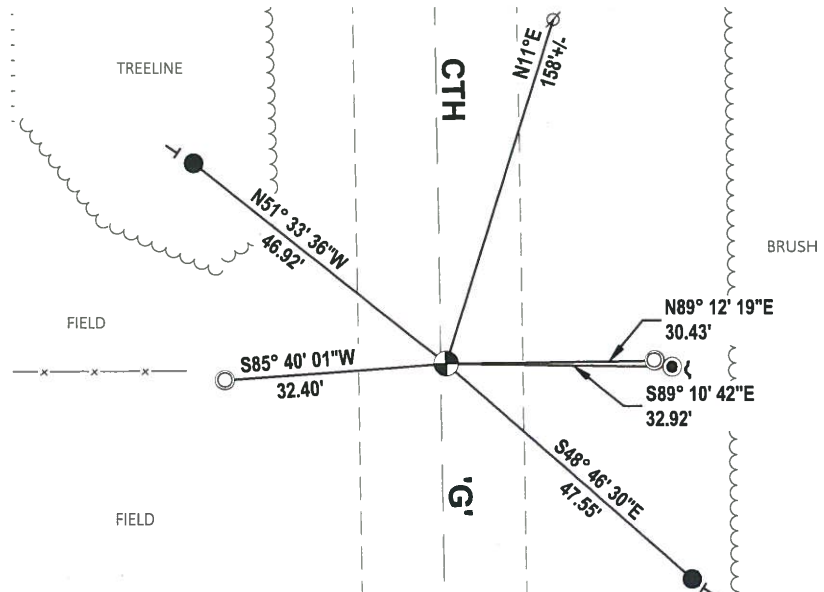
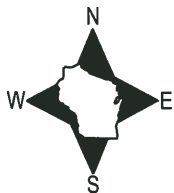
DATA SHOWN HERE ON THIS TIE SHEET IS CORRECT AND COMPLETE TO THE BEST OF MY KNOWLEDGE AND BELIEF.

PROFESSIONAL LAND SURVEYOR

DATE 5/28/2020

- TIE SKETCH

NOTE: THE CORNER LANDS .8± EAST OF CTH 'G' CENTERLINE.

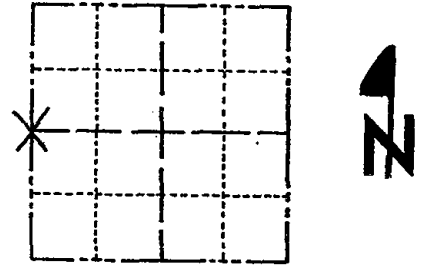


- SET 3/4" x 18" IRON REBAR, 1.50#/FT
- FOUND 1.25" IRON ROD
- FOUND 1-1/4" O.D. IRON PIPE
- ⊕ FOUND HARRISON MONUMENT
- ⊗ WITNESS POWER POLE
- ↙ STEEL FENCE POST
- VINYL "T" POST

Government Land Corner Certificate

ADAMS County
 TYPE OF MONUMENT: HARRISON
 STATE PLANE COORDINATES: N _____
 E _____
 ELEVATION — M.S.L. DATUM: _____
 THETA ANGLE: _____
 FIELD BOOK: 92 PAGE 61
 DRAWN BY: S.J.H.

CORNER NO. 57
 SECTION 15
 TOWN 14
 RANGE 7



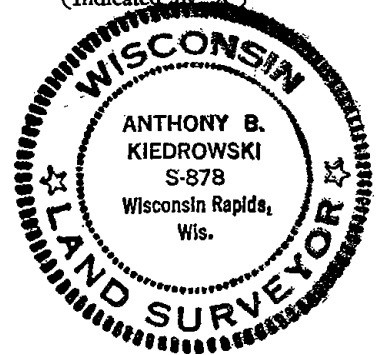
LOCATION
 (Indicated by 'X')

BASIS FOR MONUMENT LOCATION

Show info such as: History of corner, with reference to Vol. and pg., dates, surveyor; exact description of monument replaced; if location computed, by taped or EDM traverse; landowner remarks, etc. (Use reverse side if necessary)

No record of any resurveys. Excavated 3'x8'x2 1/2' deep hole, found 6"x6"x13" upright, granite stone down 18". Lowered stone and put Harrison on top.

SEAL:



DATA SHOWN HERE ON
 CERTIFIED CORRECT:

Anthony B. Kiedrowski
 Registered Land Surveyor

DATE: 5-4-82

TIE SKETCH

Show at least four ties, also fence lines, roads, topo, size and type of witness trees and if off road - best way to arrive at corner.

